



050-665

Novell

GroupWise 6 Administration

Thousands of IT Professionals before you have already passed their 050-665 certification exams using the Novell 050-665 Practice Exam from ipass4sure.com. Once you start using our 050-665 exam questions you simply can't stop! You are guaranteed to pass your Novell 050-665 test with ease and in your first attempt.

Here's what you can expect from the [ipass4sure](http://ipass4sure.com) Novell 050-665 course:

- * Up-to-Date Novell 050-665 questions designed to familiarize you with the real exam.
- * 100% correct Novell 050-665 answers you simply can't find in other 050-665 courses.
- * All of our tests are easy to download. Your file will be saved as a 050-665 PDF.
- * Novell 050-665 brain dump free content featuring the real 050-665 test questions.

Novell 050-665 Certification Exam is of core importance both in your Professional life and Novell Certification Path. With Novell Certification you can get a good job easily in the market and get on your path for success. Professionals who passed Novell 050-665 Certification Exam are an absolute favorite in the industry. If you pass Novell 050-665 Certification Exam then career opportunities are open for you.

Our 050-665 Questions & Answers provide you an easy solution to your Novell 050-665 Exam Preparation. Our 050-665 Q&As contains the most updated Novell 050-665 real tests. You can use our 050-665 Q&As on any PC with most versions of Acrobat Reader and prepare the exam easily.

QUESTION: 1

What is the correct command to load the GroupWise 6 GWPOA.NLM with the ACCT.POA startup file on your NetWare server?

- A. NGWPOA -ACCT.POA
- B. GWPOA @ACCT.POA
- C. GWPOA.NLM -ACCT.POA
- D. load GWPOA /ACCT.POA
- E. load GPOA /s ACCT.POA

Answer: B

QUESTION: 2

A resource is a physical asset that can be checked out or scheduled. You can check a resources availability with a busy search. When creating a GroupWise resource, you must assign an owner who makes scheduling and allocation decisions. Which is a prerequisite when assigning an owner?

- A. A resource owner cannot own any other objects.
- B. A resource must be in the same container as the resource owner.
- C. A resource must be in the same post office as the resource owner.
- D. A resource must be in the same domain as the resource owner, but it can be in a different post office.
- E. It makes no difference where the owner and resource objects are located as long as they are defined in the system and are visible in the address book.

Answer: C

QUESTION: 3

What WebAccess installation provides the most security?

- A. A one-server solution
- B. A two-server solution
- C. A one-to-many server solution
- D. A single WebAccess installation
- E. Multiple WebAccess installations

Answer: B

QUESTION: 4

When you delete an eDirectory user who has a GroupWise account, you are prompted to identify what attributes to delete. Which options can you use if the NetWare user and the GroupWise object are no longer used? (Choose 3.)

- A. Delete External Entity
- B. Delete GroupWise Alias
- C. Delete eDirectory Account
- D. Delete GroupWise Account
- E. Expire GroupWise Account
- F. Delete GroupWise Nickname

Answer: C, D, E

QUESTION: 5

When configuring the WebAccess Agent Properties page in ConsoleOne, what is the default name for the SNMP Community "Get" String field?

Answer: PUBLIC

QUESTION: 6

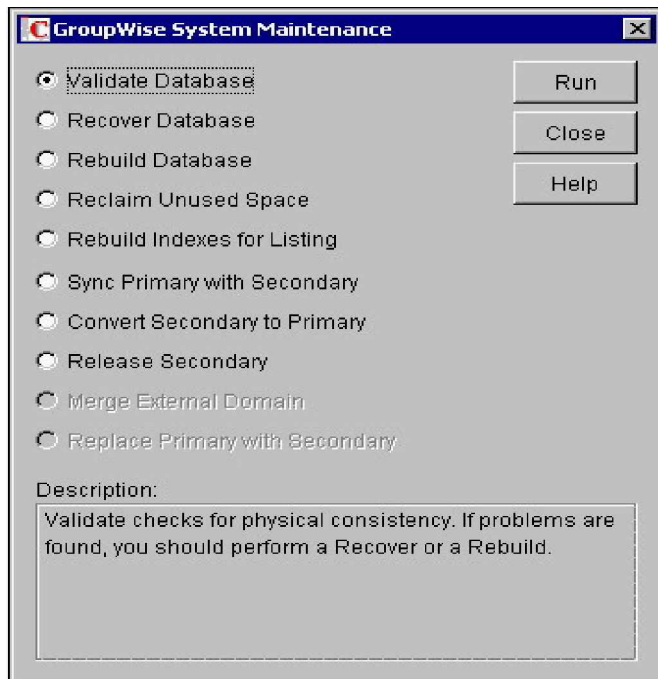
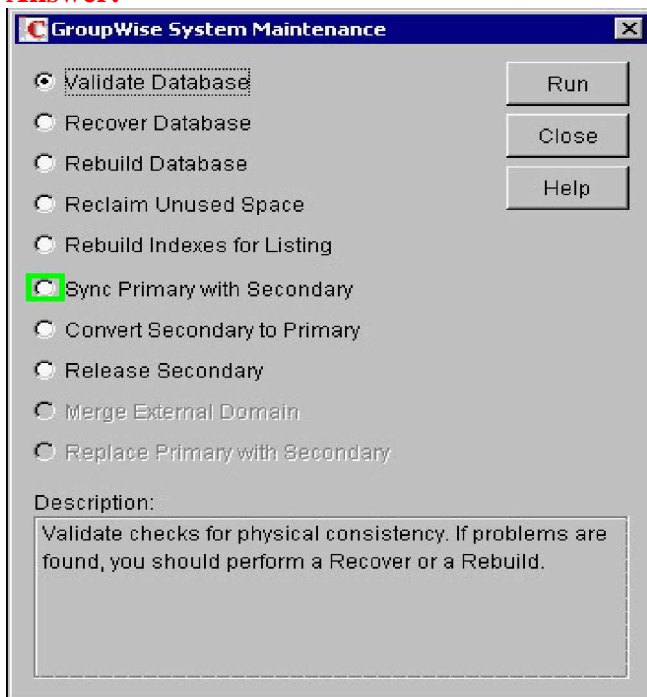
Your system consists of several domain sites linked to a hub domain. There is a gateway link to a remote site consisting of several directly linked domains. What type of link configuration is this?

- A. Star
- B. Ring
- C. Mesh
- D. Direct
- E. Hybrid
- F. Indirect

Answer: E

QUESTION: 7

Perform the following point and click task. Begin by clicking the Point-and-Click button. When you finish, continue to the next question by clicking the Next button. On the displayed graphic, click on the option you would select in GroupWise System Maintenance when the Primary Domain database contains out-of-date information about a secondary domain?

**Answer:****QUESTION: 8**

SAMPLE EXAM



Pass4sure \$89 Lifetime Membership Features;

- Pass4sure \$89 Lifetime Membership includes Over **2100** Exams in One Price.
- **All** Pass4sure **Questions and Answers** are included in \$89 package.
- **All** Pass4sure audio exams are included **free** in \$89 package (See List).
- **All** Pass4sure study guides are included **free** in \$89 package (See List).
- **Lifetime** login access, no hidden fee, no login expiry.
- **Free updates** for Lifetime.
- **Free Download Access** to All new exams added in future.
- Accurate answers with **explanations** (If applicable).
- **Verified answers** researched by industry experts.
- Study Material **updated** on regular basis.
- Questions, Answers and Study Guides are downloadable in **PDF** format.
- Audio Exams are downloadable in **MP3** format.
- **No authorization** code required to open exam.
- **Portable** anywhere.
- 100% success **Guarantee**.
- **Fast**, helpful support **24x7**.



View list of All exams (Q&A) provided in \$89 membership;
<http://www.ipass4sure.com/allexams.asp>

View list of All Study Guides (SG) provided FREE for members;
<http://www.ipass4sure.com/study-guides.asp>

View list of All Audio Exams (AE) provided FREE for members;
<http://www.ipass4sure.com/audio-exams.asp>

Download All Exams Sample QAs.
<http://www.ipass4sure.com/samples.asp>

To purchase \$89 Lifetime Full Access Membership click here (One time fee)
<https://www.regnow.com/softsell/nph-softsell.cgi?item=30820-3>

3COM	CompTIA	Filemaker	IBM	LPI	OMG	Sun
ADOBE	ComputerAssociates	Fortinet	IISFA	McAfee	Oracle	Sybase
APC	CWNP	Foundry	Intel	McData	PMI	Symantec
Apple	DELL	Fujitsu	ISACA	Microsoft	Polycom	TeraData
BEA	ECCouncil	GuidanceSoftware	ISC2	Mile2	RedHat	TIA
BICSI	EMC	HDI	ISEB	NetworkAppliance	Sair	Tibco
CheckPoint	Enterasys	Hitachi	ISM	Network-General	SASInstitute	TruSecure
Cisco	ExamExpress	HP	Juniper	Nokia	SCP	Veritas
Citrix	Exin	Huawei	Legato	Nortel	See-Beyond	Vmware
CIW	ExtremeNetworks	Hyperion	Lotus	Novell	SNIA	

and many others.. See complete list Here

