



# JN0-521

## Juniper

*FWV, Associate (JNCIA-FWV)*

Thousands of IT Professionals before you have already passed their JN0-521 certification exams using the Juniper JN0-521 Practice Exam from [ipass4sure.com](http://ipass4sure.com). Once you start using our JN0-521 exam questions you simply can't stop! You are guaranteed to pass your Juniper JN0-521 test with ease and in your first attempt.

Here's what you can expect from the [ipass4sure](http://ipass4sure.com) Juniper JN0-521 course:

- \* Up-to-Date Juniper JN0-521 questions designed to familiarize you with the real exam.
- \* 100% correct Juniper JN0-521 answers you simply can't find in other JN0-521 courses.
- \* All of our tests are easy to download. Your file will be saved as a JN0-521 PDF.
- \* Juniper JN0-521 brain dump free content featuring the real JN0-521 test questions.

Juniper JN0-521 Certification Exam is of core importance both in your Professional life and Juniper Certification Path. With Juniper Certification you can get a good job easily in the market and get on your path for success. Professionals who passed Juniper JN0-521 Certification Exam are an absolute favorite in the industry. If you pass Juniper JN0-521 Certification Exam then career opportunities are open for you.

Our JN0-521 Questions & Answers provide you an easy solution to your Juniper JN0-521 Exam Preparation. Our JN0-521 Q&As contains the most updated Juniper JN0-521 real tests. You can use our JN0-521 Q&As on any PC with most versions of Acrobat Reader and prepare the exam easily.

**QUESTION 1**

Which parameter(s) can you modify on a predefined service?

- A. source IP, source port range, destination IP, destination port range, and protocol
- B. protocol timeout
- C. source port, destination port and protocol
- D. source port range, destination port range, and protocol

Answer: B

---

**QUESTION 2**

Which two steps are required for MIP configuration? (Choose two.)

- A. Configure the MIP interface.
- B. Define the MIP ports.
- C. Define the MIP.
- D. Configure the MIP policy.

Answer: C,D

---

**QUESTION 3**

You have created a route-based VPN in your ScreenOS device. When the remote device tries to connect you see the following message in your event log, "No policy exists for the proxy id received". Which two would cause this to occur? (Choose two.)

- A. the tunnel interface is configured in a different zone than the physical interface
- B. a proxy-id conflict
- C. the remote device is a policy-based VPN
- D. an unbound tunnel interface

Answer: B,C

---

**QUESTION 4**

Which ScreenOS CLI command is used to verify MIP operation?

- A. get session
- B. get nat
- C. get translation
- D. get mip

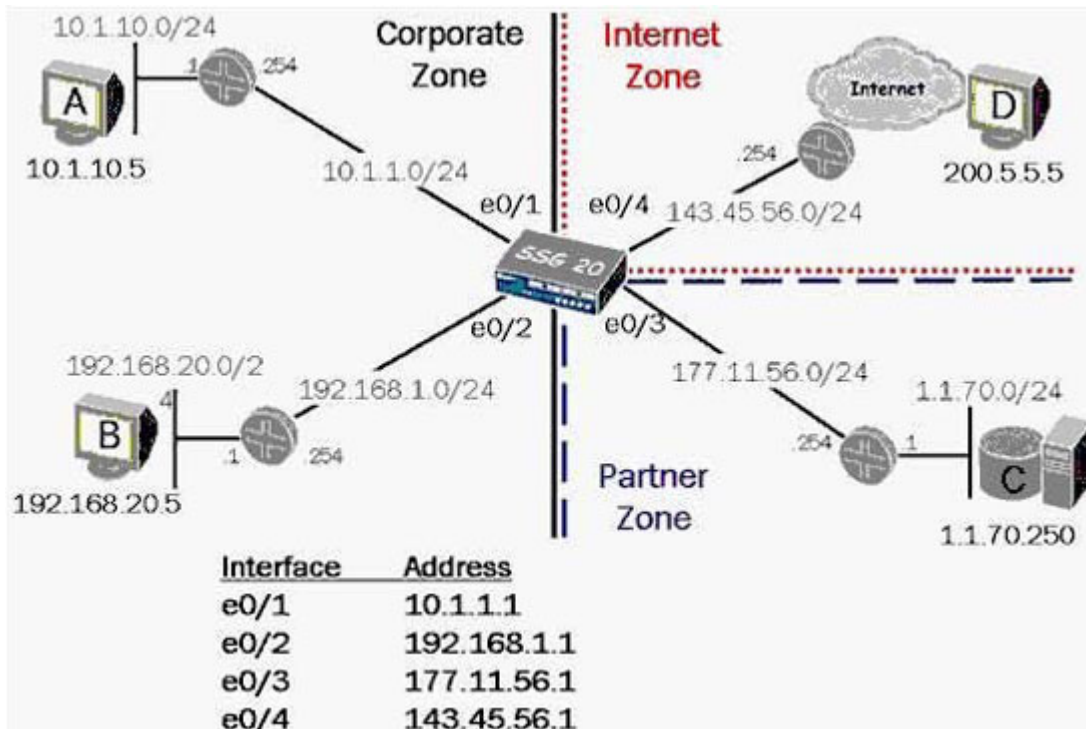
Answer: A

---

**QUESTION 5**

Exhibit:

## JN0-521



You work as an administrator at Certkiller .com. Study the exhibit carefully.

In the exhibit, if you configure NAT-src on interface e0/4, and do not specify a DIP, which address will be used as the outbound source address of packets destined for the Internet?

- A. 143.45.56.254
- B. NAT-src requires a DIP
- C. 143.45.56.1
- D. the original source address

Answer: C

### **QUESTION 6**

What needs to be configured in Phase 2 of a route-based VPN, that does not need to be configured in a policy-based VPN?

- A. tunnel-binding
- B. transport mode
- C. proxy-id
- D. custom proposals

Answer: A

### **QUESTION 7**

While looking at your policies using the WebUI, you notice that the green permit policy has turned blue. What would cause this?

## JN0-521

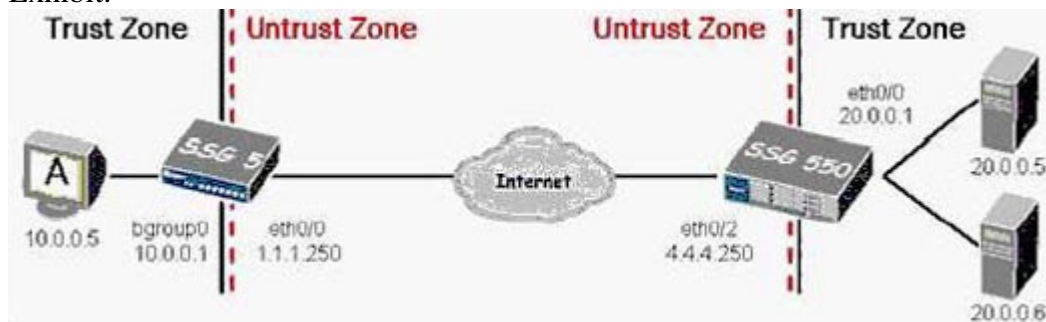
- A. The policy is currently passing traffic beyond its traffic limits and is in alarm state.
- B. The policy is configured to support a MIP.
- C. The policy is configured for unidirectional NAT.
- D. The policy is currently inactive.

Answer: C

---

### QUESTION 8

Exhibit:



You work as an administrator at Certkiller .com. Study the exhibit carefully. In the exhibit, you need to make a bidirectional gateway between the SSG 5 and the SSG 550. Which gateway address will you configure on the SSG 550 for the VPN?

- A. 20.0.0.1
- B. 10.0.0.1
- C. 4.4.4.250
- D. 1.1.1.250

Answer: D

---

### QUESTION 9

In the packet forwarding decision process, how is the second packet handled differently than the first in a series of allowed interzone packets?

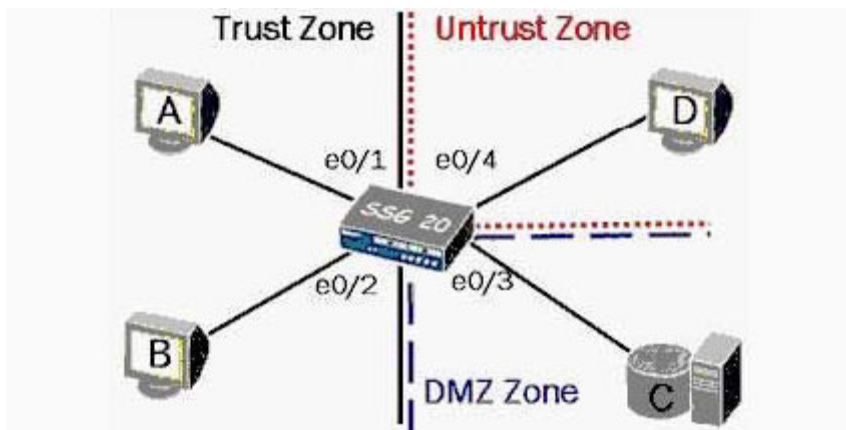
- A. The second packet causes an ARP query.
- B. The second packet is forwarded without checking the route table.
- C. The second packet is forwarded without a sanity check.
- D. The second packet is checked against the policy table.

Answer: B

---

### QUESTION 10

Exhibit:



You work as an administrator at Certkiller .com. Study the exhibit carefully. In the exhibit, to enable interface-based NAT between Host A and Host D, which interface(s) must be in NAT mode?

- A. e0/4
- B. e0/3 and e0/4
- C. e0/1 and e0/2
- D. e0/1
- E. e0/1 and e0/4

Answer: D

---

**QUESTION 11**

You want to minimize the number of IP addresses, subnets, and policies in use. How should you configure your tunnel interface?

- A. Configure the tunnel interface as unnumbered and place the interface in the same zone as the designated interface.
- B. Configure the tunnel interface as unnumbered, but place the tunnel interface in a different zone than the designated interface.
- C. Configure the tunnel interface with an IP address with a 32 bit subnet mask.
- D. Configure the tunnel interface with an IP address with a 30 bit subnet mask.

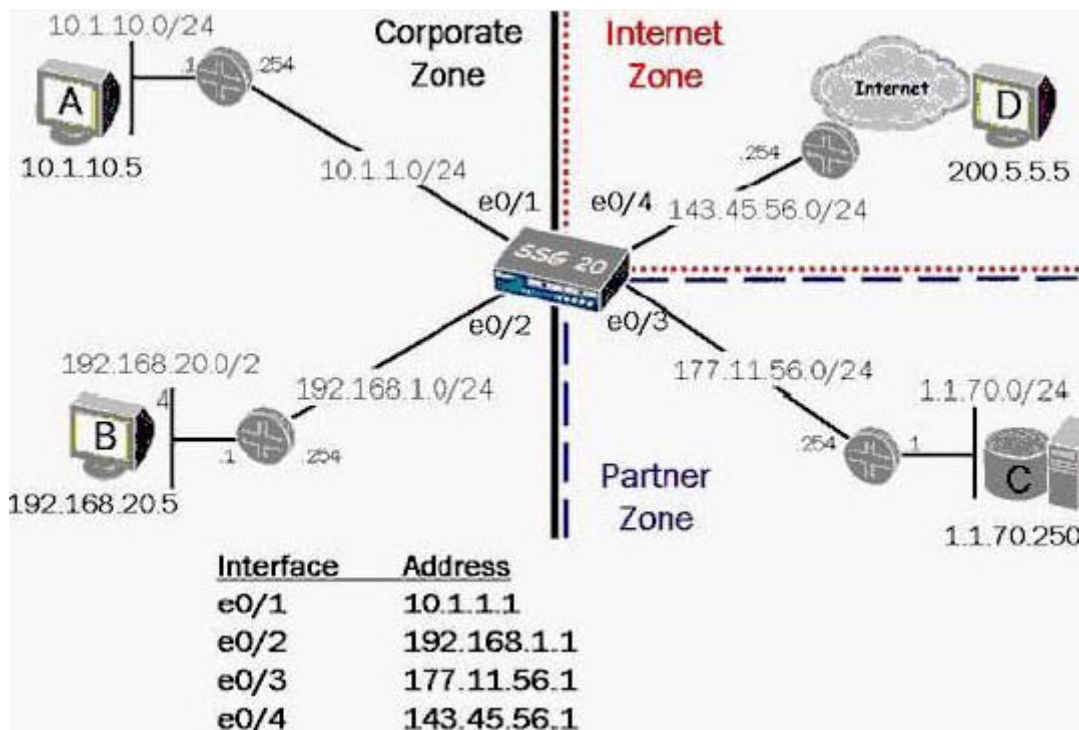
Answer: A

---

**QUESTION 12**

Exhibit:

## JN0-521



You work as an administrator at Certkiller .com. Study the exhibit carefully.

In the exhibit, which two elements would you configure to provide fixed-port translation for traffic leaving the corporate network destined for the Internet? (Choose two.)

- A. fixed-port DIP on e0/4
- B. NAT-src from Corporate to Internet zones
- C. global NAT-src policy
- D. fixed-port DIP on both e0/1 and e0/2

Answer: A,B

---

### QUESTION 13

Your VPN is failing during Phase 2 negotiation, and you are the initiator. You check your local event log and see IPSec messages but no failures. What is the next logical troubleshooting step?

- A. Double check routing reachability to the remote network.
- B. Configure the peer-id on your local IKE gateway.
- C. Turn on logging in the policy and check the event logs again.
- D. View the event log of the responding gateway.

Answer: D

---

### QUESTION 14

Which three commands are used to verify that routing is correctly configured? (Choose three.)

SAMPLE EXAM



### Pass4sure \$89 Lifetime Membership Features;

- Pass4sure \$89 Lifetime Membership includes Over **2100** Exams in One Price.
- **All** Pass4sure **Questions and Answers** are included in \$89 package.
- **All** Pass4sure audio exams are included **free** in \$89 package (See List).
- **All** Pass4sure study guides are included **free** in \$89 package (See List).
- **Lifetime** login access, no hidden fee, no login expiry.
- **Free updates** for Lifetime.
- **Free Download Access** to All new exams added in future.
- Accurate answers with **explanations** (If applicable).
- **Verified answers** researched by industry experts.
- Study Material **updated** on regular basis.
- Questions, Answers and Study Guides are downloadable in **PDF** format.
- Audio Exams are downloadable in **MP3** format.
- **No authorization** code required to open exam.
- **Portable** anywhere.
- 100% success **Guarantee**.
- **Fast**, helpful support **24x7**.



View list of All exams (Q&A) provided in \$89 membership;  
<http://www.ipass4sure.com/allexams.asp>

View list of All Study Guides (SG) provided FREE for members;  
<http://www.ipass4sure.com/study-guides.asp>

View list of All Audio Exams (AE) provided FREE for members;  
<http://www.ipass4sure.com/audio-exams.asp>

Download All Exams Sample QAs.  
<http://www.ipass4sure.com/samples.asp>

To purchase \$89 Lifetime Full Access Membership click here (One time fee)  
<https://www.regnow.com/softsell/nph-softsell.cgi?item=30820-3>

3COM	CompTIA	Filemaker	IBM	LPI	OMG	Sun
ADOBE	ComputerAssociates	Fortinet	IISFA	McAfee	Oracle	Sybase
APC	CWNP	Foundry	Intel	McData	PMI	Symantec
Apple	DELL	Fujitsu	ISACA	Microsoft	Polycom	TeraData
BEA	ECCouncil	GuidanceSoftware	ISC2	Mile2	RedHat	TIA
BICSI	EMC	HDI	ISEB	NetworkAppliance	Sair	Tibco
CheckPoint	Enterasys	Hitachi	ISM	Network-General	SASInstitute	TruSecure
Cisco	ExamExpress	HP	Juniper	Nokia	SCP	Veritas
Citrix	Exin	Huawei	Legato	Nortel	See-Beyond	Vmware
CIW	ExtremeNetworks	Hyperion	Lotus	Novell	SNIA	

and many others.. See complete list Here

