



# EW0-300

## ExtremeNetworks

*Extreme Networks Specialist (ENS)*

Thousands of IT Professionals before you have already passed their EW0-300 certification exams using the ExtremeNetworks EW0-300 Practice Exam from [ipass4sure.com](http://ipass4sure.com). Once you start using our EW0-300 exam questions you simply can't stop! You are guaranteed to pass your ExtremeNetworks EW0-300 test with ease and in your first attempt.

Here's what you can expect from the [ipass4sure](http://ipass4sure.com) ExtremeNetworks EW0-300 course:

- \* Up-to-Date ExtremeNetworks EW0-300 questions designed to familiarize you with the real exam.
- \* 100% correct ExtremeNetworks EW0-300 answers you simply can't find in other EW0-300 courses.
- \* All of our tests are easy to download. Your file will be saved as a EW0-300 PDF.
- \* ExtremeNetworks EW0-300 brain dump free content featuring the real EW0-300 test questions.

ExtremeNetworks EW0-300 Certification Exam is of core importance both in your Professional life and ExtremeNetworks Certification Path. With ExtremeNetworks Certification you can get a good job easily in the market and get on your path for success. Professionals who passed ExtremeNetworks EW0-300 Certification Exam are an absolute favorite in the industry. If you pass ExtremeNetworks EW0-300 Certification Exam then career opportunities are open for you.

Our EW0-300 Questions & Answers provide you an easy solution to your ExtremeNetworks EW0-300 Exam Preparation. Our EW0-300 Q&As contains the most updated ExtremeNetworks EW0-300 real tests. You can use our EW0-300 Q&As on any PC with most versions of Acrobat Reader and prepare the exam easily.

**QUESTION 1**

When limit-learning is configured on a port and the limit is reached the following traffic still flows to the port.

- A. Packets destined for the active Mac addresses
- B. Broadcast traffic
- C. EDP traffic
- D. All of the above

Answer: D

---

**QUESTION 2**

Extreme ware 7.0 supports both level1 and level 2 IS-IS routers.

- A. TRUE
- B. FALSE

Answer: A

---

**QUESTION 3**

The integrated IS-IS protocol allows for mixing of IP-only,OSI-only, and dual (IP and OSI) routers.

- A. True
- B. False

Answer: A

---

**QUESTION 4**

In OSPF, the router type that is required to connect an area with another area is the:

- A. Designated Router
- B. Back-up Designated Router
- C. ASBR
- D. ABR

Answer: D

---

**QUESTION 5**

EAPS protection switching is similar to what can be achieved with the Spanning Tree Protocol but one of the big advantages of EAPS is:

- A. EAPS also supports star topologies
- B. EAPS has a recovery time of less than a second in case of link failure.

## EW0-300

- C. An EAPS domain supports multiple root bridges, thus alternative path
- D. EAPS eliminates the need for protocols like ESRP or VRRP that bring default gateway redundancy.

Answer: B

---

### **QUESTION 6**

On a RADIUS server you can distinguish between switch access and Netlogin authentication. Extreme provides a vendor specific attribute

Extreme:Extreme-Netlogin-only =disabled/enabled.

User authentication for both Netlogin and switch access is allowed when the value is disabled.

When the value enabled user authentication is restricted to Netlogin only.

- A. True
- B. False

Answer: A

---

### **QUESTION 7**

The following modes of operation are supported with the Network login feature. (choose all that apply)

- A. Secure mode
- B. Campus mode
- C. Quick Mode
- D. ISP mode

Answer: A,B,C,D

---

### **QUESTION 8**

An LSP is a link state packet used by which routing protocol?

- A. OSPF
- B. RIP
- C. BGP
- D. None of these

Answer: D

---

### **QUESTION 9**

It is possible to set an STP-threshold to switch from a shared tree to a shortest path tree. This switch over will be initiated by:

- A. The Rendezvous Point
- B. The Bootstrap Router

## EW0-300

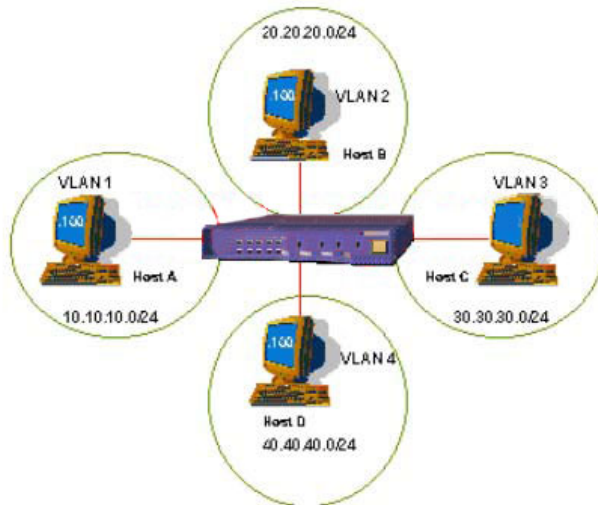
- C. A last hop router
- D. The router nearest to the source

Answer: C

---

### QUESTION 10

Exhibit:



```
create access-list ip1 ip destination 20.20.20.100/32 source 10.10.10.100/32 permit ports any ignore-overlap
create access-list ip2 ip destination 30.30.30.100/32 source 10.10.10.100/32 permit ports any ignore-overlap
create access-list ip3 ip destination 40.40.40.100/32 source 10.10.10.100/32 permit ports any ignore-overlap
create access-list ip4 ip destination 10.10.10.100/32 source 20.20.20.100/32 permit ports any ignore-overlap
create access-list ip5 ip destination 10.10.10.100/32 source 30.30.30.100/32 permit ports any ignore-overlap
create access-list ip6 ip destination 10.10.10.100/32 source 40.40.40.100/32 permit ports any ignore-overlap
create access-list default rule ip destination any source any deny ports any
```

According to accompanying diagram and ACL configuration it is possible for Host A (10.10.10.100) and Host C (30.30.30.100) to successfully communicate.

- A. TRUE
- B. FALSE

Answer: A

---

### QUESTION 11

The maximum number of EAPS domains supported per switch and ring is?

- A. 64
- B. 32
- C. 16
- D. 8

Answer: A

---

### QUESTION 12

In Extreme Ware, which one of the following is an optional ESRP configuration

SAMPLE EXAM



### Pass4sure \$89 Lifetime Membership Features;

- Pass4sure \$89 Lifetime Membership includes Over **2100** Exams in One Price.
- **All** Pass4sure **Questions and Answers** are included in \$89 package.
- **All** Pass4sure audio exams are included **free** in \$89 package (See List).
- **All** Pass4sure study guides are included **free** in \$89 package (See List).
- **Lifetime** login access, no hidden fee, no login expiry.
- **Free updates** for Lifetime.
- **Free Download Access** to All new exams added in future.
- Accurate answers with **explanations** (If applicable).
- **Verified answers** researched by industry experts.
- Study Material **updated** on regular basis.
- Questions, Answers and Study Guides are downloadable in **PDF** format.
- Audio Exams are downloadable in **MP3** format.
- **No authorization** code required to open exam.
- **Portable** anywhere.
- 100% success **Guarantee**.
- **Fast**, helpful support **24x7**.



View list of All exams (Q&A) provided in \$89 membership;  
<http://www.ipass4sure.com/allexams.asp>

View list of All Study Guides (SG) provided FREE for members;  
<http://www.ipass4sure.com/study-guides.asp>

View list of All Audio Exams (AE) provided FREE for members;  
<http://www.ipass4sure.com/audio-exams.asp>

Download All Exams Sample QAs.  
<http://www.ipass4sure.com/samples.asp>

To purchase \$89 Lifetime Full Access Membership click here (One time fee)  
<https://www.regnow.com/softsell/nph-softsell.cgi?item=30820-3>

|            |                    |                  |         |                  |              |           |
|------------|--------------------|------------------|---------|------------------|--------------|-----------|
| 3COM       | CompTIA            | Filemaker        | IBM     | LPI              | OMG          | Sun       |
| ADOBE      | ComputerAssociates | Fortinet         | IISFA   | McAfee           | Oracle       | Sybase    |
| APC        | CWNP               | Foundry          | Intel   | McData           | PMI          | Symantec  |
| Apple      | DELL               | Fujitsu          | ISACA   | Microsoft        | Polycom      | TeraData  |
| BEA        | ECCouncil          | GuidanceSoftware | ISC2    | Mile2            | RedHat       | TIA       |
| BICSI      | EMC                | HDI              | ISEB    | NetworkAppliance | Sair         | Tibco     |
| CheckPoint | Enterasys          | Hitachi          | ISM     | Network-General  | SASInstitute | TruSecure |
| Cisco      | ExamExpress        | HP               | Juniper | Nokia            | SCP          | Veritas   |
| Citrix     | Exin               | Huawei           | Legato  | Nortel           | See-Beyond   | Vmware    |
| CIW        | ExtremeNetworks    | Hyperion         | Lotus   | Novell           | SNIA         |           |

and many others.. See complete list Here

