



920-245

Nortel

Ethernet Switching

Thousands of IT Professionals before you have already passed their 920-245 certification exams using the Nortel 920-245 Practice Exam from ipass4sure.com. Once you start using our 920-245 exam questions you simply can't stop! You are guaranteed to pass your Nortel 920-245 test with ease and in your first attempt.

Here's what you can expect from the [ipass4sure](http://ipass4sure.com) Nortel 920-245 course:

- * Up-to-Date Nortel 920-245 questions designed to familiarize you with the real exam.
- * 100% correct Nortel 920-245 answers you simply can't find in other 920-245 courses.
- * All of our tests are easy to download. Your file will be saved as a 920-245 PDF.
- * Nortel 920-245 brain dump free content featuring the real 920-245 test questions.

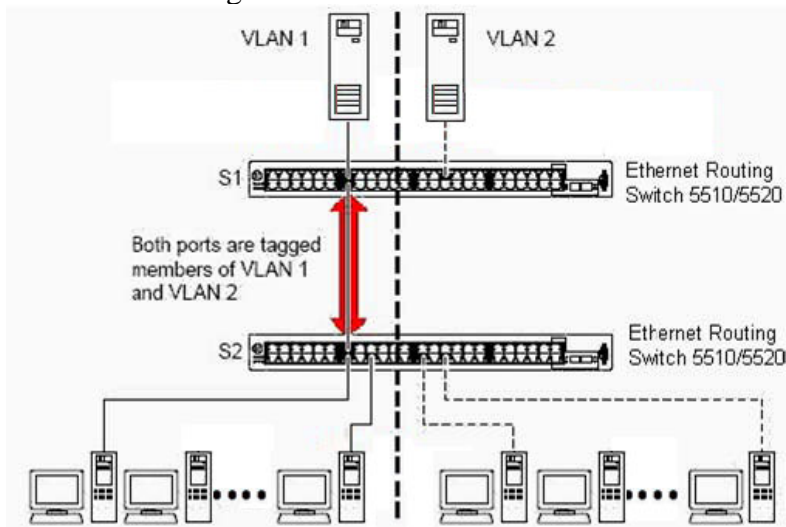
Nortel 920-245 Certification Exam is of core importance both in your Professional life and Nortel Certification Path. With Nortel Certification you can get a good job easily in the market and get on your path for success. Professionals who passed Nortel 920-245 Certification Exam are an absolute favorite in the industry. If you pass Nortel 920-245 Certification Exam then career opportunities are open for you.

Our 920-245 Questions & Answers provide you an easy solution to your Nortel 920-245 Exam Preparation. Our 920-245 Q&As contains the most updated Nortel 920-245 real tests. You can use our 920-245 Q&As on any PC with most versions of Acrobat Reader and prepare the exam easily.

QUESTION 1

The exhibit shows VLANs spanning two Ethernet Routing Switch 5510/5520s. Both port 14 on S1 and port 13 on S2, identified by the red arrow, are tagged members of VLAN 1 and VLAN 2.

How is this configured?



- A. By ensuring that the tagging checkbox is checked on the configuration screens for VLAN 1 and VLAN 2.
- B. By enabling 802.1Q tagging on both port 14 of S1 and port 13 of S2.
- C. This VLAN configuration is incorrect and must be configured differently to work.
- D. Tagging is automatically configured because port 13 of S2 is already in VLAN 1.

Answer: B

QUESTION 2

You recently reset an Ethernet Routing Switch 5510 using 4.1 code to the factory default settings. You want to upgrade the code for the 5510 but do not have a console cable to do it. Which IP address must you use to perform this task?

- A. 192.168.1.1/24
- B. 192.168.192.168/24
- C. 192.168.10.1/24
- D. 192.168.168.192/24

Answer: B

QUESTION 3

Certkiller .com wants port mirroring configured on an Ethernet Switch 470-48T. They want port 23 configured as the monitor port to monitor all traffic received and transmitted between a workstation on port 24 (port Y) and a workstation on port 25 (port X). Once you access the "Port Mirroring Configuration" screen using the Console Interface

(CI) Menus, which field should you select?

- A. <->Port X or Port Y <->
- B. <->Port X and Port Y <->
- C. ->Port X or Port Y ->
- D. ->Port X and Port Y ->

Answer: B

QUESTION 4

An engineer configures a single instance of Virtual Router Redundancy Protocol (VRRP) across two Ethernet Routing Switch 8600s. One Ethernet Routing Switch 8600 is configured with a VRRP Priority of 255 and the other is configured with a VRRP Priority of 100. During testing the engineer notices that both Ethernet Routing Switch 8600s are in Master state. What is a possible cause for this?

- A. The Ethernet Routing Switch 8600 VRRP instances have been configured with the same VRID.
- B. A critical IP interface has not been configured for the Ethernet Routing Switch 8600 with a VRRP Priority of 100.
- C. VRRP has been configured on a VLAN on one 8600 and on a brouter port on the other 8600.
- D. The Ethernet Routing Switch 8600 VRRP instances have been configured with different VRIDs.

Answer: D

QUESTION 5

To monitor the performance of an Ethernet switched network, why would you use Enterprise Network Management System OmniView instead of Java Device Manager (JDM)?

- A. OmniView supports RMON while JDM does not.
- B. JDM is incapable of supporting the Business Policy Switch while OmniView supports it.
- C. OmniView can present statistics in both graphical and tabular formats while JDM only supports tabular formats.
- D. JDM works with individual network components while OmniView works with subnets and LAN segments.

Answer: D

QUESTION 6

Which three statements are true regarding RMON alarms? (Choose three.)

- A. Alarms can only be viewed by Device Manager.

SAMPLE EXAM



Pass4sure \$89 Lifetime Membership Features;

- Pass4sure \$89 Lifetime Membership includes Over **2100** Exams in One Price.
- **All** Pass4sure **Questions and Answers** are included in \$89 package.
- **All** Pass4sure audio exams are included **free** in \$89 package (See List).
- **All** Pass4sure study guides are included **free** in \$89 package (See List).
- **Lifetime** login access, no hidden fee, no login expiry.
- **Free updates** for Lifetime.
- **Free Download Access** to All new exams added in future.
- Accurate answers with **explanations** (If applicable).
- **Verified answers** researched by industry experts.
- Study Material **updated** on regular basis.
- Questions, Answers and Study Guides are downloadable in **PDF** format.
- Audio Exams are downloadable in **MP3** format.
- **No authorization** code required to open exam.
- **Portable** anywhere.
- 100% success **Guarantee**.
- **Fast**, helpful support **24x7**.



View list of All exams (Q&A) provided in \$89 membership;
<http://www.ipass4sure.com/allexams.asp>

View list of All Study Guides (SG) provided FREE for members;
<http://www.ipass4sure.com/study-guides.asp>

View list of All Audio Exams (AE) provided FREE for members;
<http://www.ipass4sure.com/audio-exams.asp>

Download All Exams Sample QAs.
<http://www.ipass4sure.com/samples.asp>

To purchase \$89 Lifetime Full Access Membership click here (One time fee)
<https://www.regnow.com/softsell/nph-softsell.cgi?item=30820-3>

| | | | | | | |
|------------|--------------------|------------------|---------|------------------|--------------|-----------|
| 3COM | CompTIA | Filemaker | IBM | LPI | OMG | Sun |
| ADOBE | ComputerAssociates | Fortinet | IISFA | McAfee | Oracle | Sybase |
| APC | CWNP | Foundry | Intel | McData | PMI | Symantec |
| Apple | DELL | Fujitsu | ISACA | Microsoft | Polycom | TeraData |
| BEA | ECCouncil | GuidanceSoftware | ISC2 | Mile2 | RedHat | TIA |
| BICSI | EMC | HDI | ISEB | NetworkAppliance | Sair | Tibco |
| CheckPoint | Enterasys | Hitachi | ISM | Network-General | SASInstitute | TruSecure |
| Cisco | ExamExpress | HP | Juniper | Nokia | SCP | Veritas |
| Citrix | Exin | Huawei | Legato | Nortel | See-Beyond | Vmware |
| CIW | ExtremeNetworks | Hyperion | Lotus | Novell | SNIA | |

and many others.. See complete list Here

