



E20-060

EMC

EMC Technology Foundations – Business Continuity

Thousands of IT Professionals before you have already passed their E20-060 certification exams using the EMC E20-060 Practice Exam from ipass4sure.com. Once you start using our E20-060 exam questions you simply can't stop! You are guaranteed to pass your EMC E20-060 test with ease and in your first attempt.

Here's what you can expect from the [ipass4sure](http://ipass4sure.com) EMC E20-060 course:

- * Up-to-Date EMC E20-060 questions designed to familiarize you with the real exam.
- * 100% correct EMC E20-060 answers you simply can't find in other E20-060 courses.
- * All of our tests are easy to download. Your file will be saved as a E20-060 PDF.
- * EMC E20-060 brain dump free content featuring the real E20-060 test questions.

EMC E20-060 Certification Exam is of core importance both in your Professional life and EMC Certification Path. With EMC Certification you can get a good job easily in the market and get on your path for success. Professionals who passed EMC E20-060 Certification Exam are an absolute favorite in the industry. If you pass EMC E20-060 Certification Exam then career opportunities are open for you.

Our E20-060 Questions & Answers provide you an easy solution to your EMC E20-060 Exam Preparation. Our E20-060 Q&As contains the most updated EMC E20-060 real tests. You can use our E20-060 Q&As on any PC with most versions of Acrobat Reader and prepare the exam easily.

QUESTION 1

After a client has presented information to be stored on Centera, what is the next step?

- A. Unique Content Address is calculated
- B. Object is protected
- C. Object is sent to Centera via Centera API over IP
- D. Object is replicated

Answer: A

QUESTION 2

Which two of the following are iSCSI naming conventions? (Choose two.)

- A. iSNS
- B. iQN
- C. EUI
- D. DNS

Answer: B,C

QUESTION 3

How does the TimeFinder/Mirror Restore operation transfer data?

- A. It restores from the VDEV device to the BCV device
- B. It restores from the R2 device to the R1 device
- C. It copies from the Standard device to the BCV device
- D. It copies from the BCV device to the Standard device

Answer: D

QUESTION 4

Which of the following is a feature of the dual-ported disk and redundant directors in Symmetrix DMX systems?

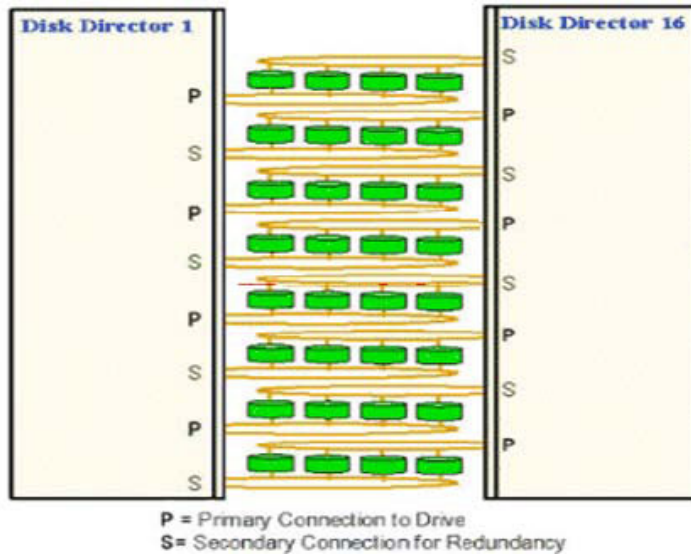
- A. Disk modules have two independent Fibre Channel port
- B. Directors are always configured in pairs
- C. Directors have two primary loops and two secondary loops for failover
- D. Driveports connect to directors by the same loop

Answer: B

QUESTION 5

Exhibit

E20-060



Which two of the following are features of the dual-ported disk and redundant directors in a Symmetrix DMX system? (Choose two.)

- A. Individual disk drives can be inserted or removed without an interruption of service
- B. Disk modules have four independent Fibre Channel ports
- C. Directors have two primary loops and two secondary loops for failover
- D. Directors are configured in pairs
- E. Drive ports connect to directors by the same loop

Answer: A,D

QUESTION 6

Which of the following Celerra data replication options provides a point-in-time filesystem copy over IP?

- A. TimeFinder/FS Snapcopy
- B. SnapSure
- C. OnCourse
- D. Celerra Replicator

Answer: D

QUESTION 7

Which of the following protocols can be used to manage multi-vendor switches?

- A. NDMP
- B. SMTP
- C. RPC
- D. SNMP

Answer: D

QUESTION 8

Which of the following Symmetrix feature allows striping data across multiple volumes?

- A. Meta Volumes
- B. Age-Link-Chain
- C. Dynamic Sparing
- D. Dynamic Mirrored Service Policy

Answer: A

QUESTION 9

Which of the following statements best describes a Fan-in Ratio for a SAN attached array?

- A. The qualified maximum number of HBA ports that can be direct attached to a storage port in a SAN
- B. The qualified maximum number of storage ports that can be accessed by a single initiator through a SAN
- C. The qualified maximum number of HBA ports that can be attached to a Target port in a SAN
- D. The maximum number of HBA and storage ports that can be contained in a zone in a switch

Answer: B

QUESTION 10

Which of the following statements best describes TimeFinder/Mirror Clone?

- A. Uses copy on write
- B. Uses copy on access
- C. Requires Symmetrix to be configured with a dedicated "Save Area" for changed data
- D. Requires Symmetrix to be configured with R1 and R2 devices

Answer: B

QUESTION 11

In the first step in an SRDF Semi-Synchronous I/O operation, cache of the source Symmetrix receives a write from the host. What is the next step?

- A. Write complete is sent to the host
- B. Write transmitted by the Source Symmetrix to the Target Symmetrix

E20-060

- C. Write received from host into cache of Source Symmetrix
- D. Target Symmetrix sends acknowledgement to Source Symmetrix

Answer: A

QUESTION 12

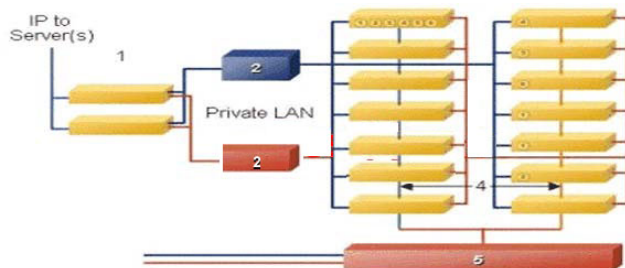
What is the advantage does hard zoning being to a SAN?

- A. Host-based volume access
- B. Configuration flexibility
- C. Security at the switch port level
- D. Ease of duplication

Answer: C

QUESTION 13

Exhibit



The exhibit above shows the basic architecture of a Centera. Which components are labeled #2 and #3?

- A. #2 = Access Nodes and #3 = Storage Nodes
- B. #2 = Switches and #3 = Storage Nodes
- C. #2 = Access Nodes and #3 = CAG
- D. #2 = Switches and #3 = Access Nodes

Answer: B

QUESTION 14

Which of the following is a feature of Connectrix enterprise directors?

- A. Secure functionality
- B. Fully redundant components
- C. Low port count
- D. Limited hot swappable components

Answer: B

SAMPLE EXAM



Pass4sure \$89 Lifetime Membership Features;

- Pass4sure \$89 Lifetime Membership includes Over **2100** Exams in One Price.
- **All** Pass4sure **Questions and Answers** are included in \$89 package.
- **All** Pass4sure audio exams are included **free** in \$89 package (See List).
- **All** Pass4sure study guides are included **free** in \$89 package (See List).
- **Lifetime** login access, no hidden fee, no login expiry.
- **Free updates** for Lifetime.
- **Free Download Access** to All new exams added in future.
- Accurate answers with **explanations** (If applicable).
- **Verified answers** researched by industry experts.
- Study Material **updated** on regular basis.
- Questions, Answers and Study Guides are downloadable in **PDF** format.
- Audio Exams are downloadable in **MP3** format.
- **No authorization** code required to open exam.
- **Portable** anywhere.
- 100% success **Guarantee**.
- **Fast**, helpful support **24x7**.



View list of All exams (Q&A) provided in \$89 membership;
<http://www.ipass4sure.com/allexams.asp>

View list of All Study Guides (SG) provided FREE for members;
<http://www.ipass4sure.com/study-guides.asp>

View list of All Audio Exams (AE) provided FREE for members;
<http://www.ipass4sure.com/audio-exams.asp>

Download All Exams Sample QAs.
<http://www.ipass4sure.com/samples.asp>

To purchase \$89 Lifetime Full Access Membership click here (One time fee)
<https://www.regnow.com/softsell/nph-softsell.cgi?item=30820-3>

3COM	CompTIA	Filemaker	IBM	LPI	OMG	Sun
ADOBE	ComputerAssociates	Fortinet	IISFA	McAfee	Oracle	Sybase
APC	CWNP	Foundry	Intel	McData	PMI	Symantec
Apple	DELL	Fujitsu	ISACA	Microsoft	Polycom	TeraData
BEA	ECCouncil	GuidanceSoftware	ISC2	Mile2	RedHat	TIA
BICSI	EMC	HDI	ISEB	NetworkAppliance	Sair	Tibco
CheckPoint	Enterasys	Hitachi	ISM	Network-General	SASInstitute	TruSecure
Cisco	ExamExpress	HP	Juniper	Nokia	SCP	Veritas
Citrix	Exin	Huawei	Legato	Nortel	See-Beyond	Vmware
CIW	ExtremeNetworks	Hyperion	Lotus	Novell	SNIA	

and many others.. See complete list Here

