



70-176

Microsoft

Designing and Implementing Desktop Applications with Microsoft Visual basic 6.0

Thousands of IT Professionals before you have already passed their 70-176 certification exams using the Microsoft 70-176 Practice Exam from ipass4sure.com. Once you start using our 70-176 exam questions you simply can't stop! You are guaranteed to pass your Microsoft 70-176 test with ease and in your first attempt.

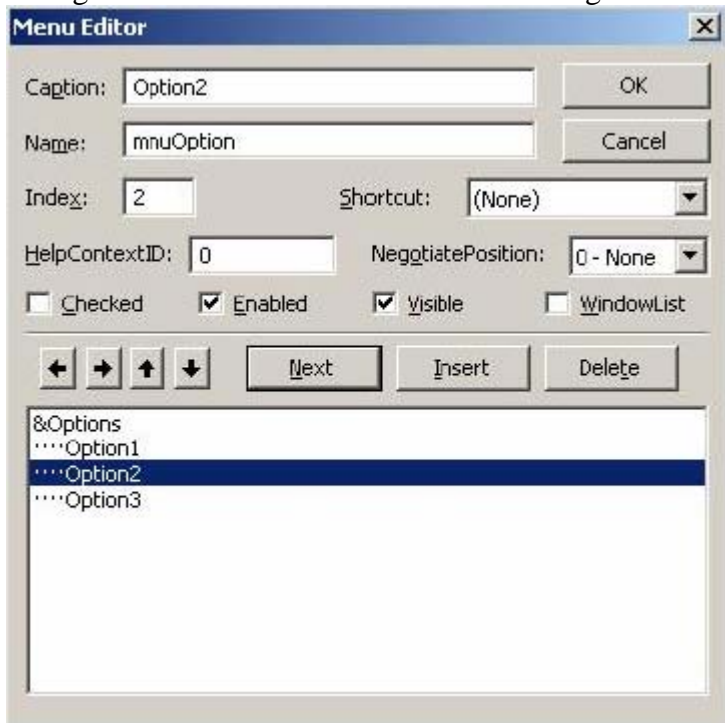
Here's what you can expect from the [ipass4sure](http://ipass4sure.com) Microsoft 70-176 course:

- * Up-to-Date Microsoft 70-176 questions designed to familiarize you with the real exam.
- * 100% correct Microsoft 70-176 answers you simply can't find in other 70-176 courses.
- * All of our tests are easy to download. Your file will be saved as a 70-176 PDF.
- * Microsoft 70-176 brain dump free content featuring the real 70-176 test questions.

Microsoft 70-176 Certification Exam is of core importance both in your Professional life and Microsoft Certification Path. With Microsoft Certification you can get a good job easily in the market and get on your path for success. Professionals who passed Microsoft 70-176 Certification Exam are an absolute favorite in the industry. If you pass Microsoft 70-176 Certification Exam then career opportunities are open for you.

Our 70-176 Questions & Answers provide you an easy solution to your Microsoft 70-176 Exam Preparation. Our 70-176 Q&As contains the most updated Microsoft 70-176 real tests. You can use our 70-176 Q&As on any PC with most versions of Acrobat Reader and prepare the exam easily.

QUESTION 1. Your Visual Basic application includes a menu to display several options. This menu is configured as shown in the menu editor dialog box in the exhibit.



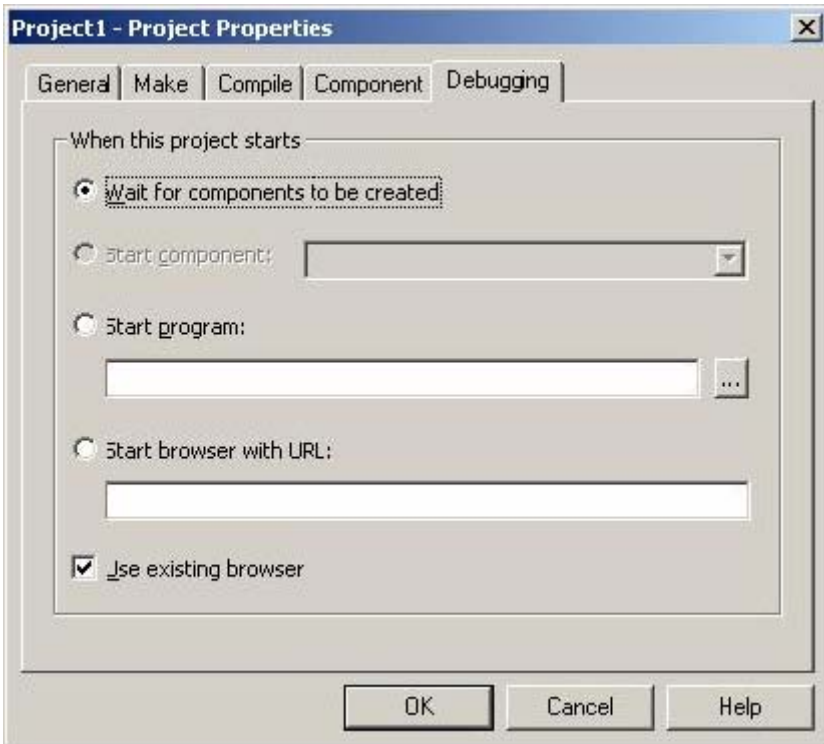
You want the menu to display a check mark in front of each option the first time the user selects it, and to toggle the check mark off and on for subsequent selections.

Which code fragment will toggle the display of the check marks on this menu when one of the three options is selected?

- A. If mnuOption(2).Checked = True Then
MnuOption(2).Checked = False
Else
MnuOption(2).Checked = True
End If
- B. MnuOption.Item(Index).Checked = Not _
MnuOption.Item(Index).Checked
- C. MnuOption.Checked = Not mnuOption.Checked
- D. MnuOption.Item(index) = Not_
MnuOption.Item(Index).checked

Answer: B

QUESTION 2. You create an ActiveX control named MYCalender. You need to debug your control within a Visual Basic host application named Calendar Test that you created earlier. You want to debug both MYCalender and its interaction with Calendar Test. When you select Start from the Visual Basic IDE menu, the dialog box shown in the exhibit is displayed.



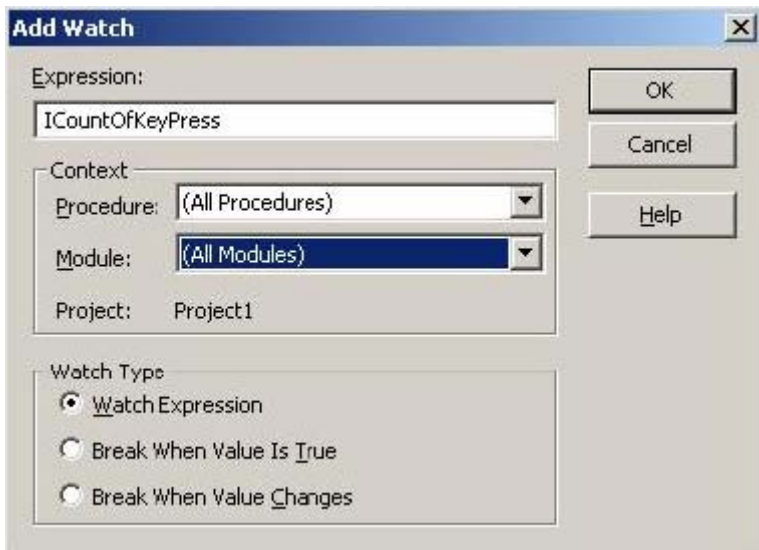
How should you begin your debugging session?

- A. Click Cancel Start over by selecting Start With Full Compile from the Run menu.
- B. Click Cancel. Run the Calendar Test application from Microsoft Windows Explorer.
- C. Enter CalendarTest.exe in the Start program box and click OK.
- D. Click Cancel. Add the Calendar Test application to the project group and make it the startup Project. Select start again.

Answer: D.

QUESTION 3. You are debugging a Visual Basic desktop application. Many of the forms in the application use a variable named `iCountOfKeyPress`, which is declared in the General Declarations section of each form module.

It appears that the variable contains the wrong value, but only on Form1. You want to step through the application code with a watch expression set on `iCountOfKeyPress`, as shown in the exhibit.

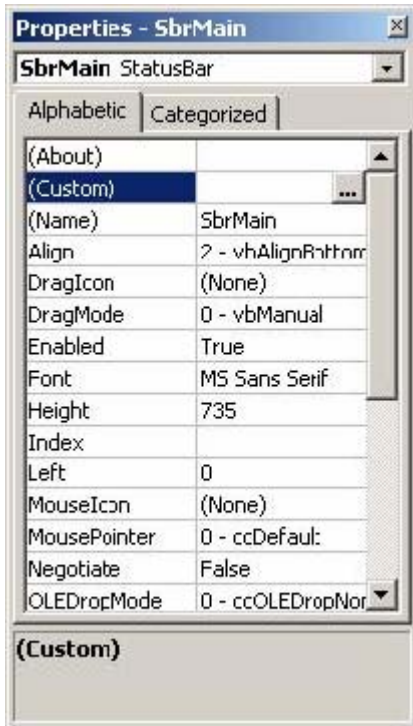


How can you control the scope of your watch expression so that it applies only to the `iCountOfKeyPress` variable in Form 1?

- A. When defining the watch expression for `iCountKeyPress`, set the module context for the expression to Form1. Then set the procedure context to all Procedures.
- B. When defining the watch expression for `iCountKeyPress`, specify the expression as `iCountOfKeyPress.Value`. Then set the module context to all modules, and set the procedure context to all Procedures.
- C. When defining the watch expression for `iCountOfKeyPress`, set the module context for the expression to All Modules. Then set the procedure context for the expression to `Form_Load`.
- D. When defining the watch expression for `iCountOfKeyPress`, specify the expression as `if Form= Form1 then iCountOfKeyPress`. Then set the module context to All Modules, and set the procedures context to All Procedures.

Answer: A.

QUESTION 4. You use Visual Basic to design a form that uses a Status Bar control named `sbrMain` that displays the correct time. The properties for this are shown in the Property Pages dialog box in the exhibit.



When the user clicks the time displayed on the status bar, you want to load another form named frmTimeSheet. Which procedure should you use?

- A. Private Sub sbrMain_Click ()
 If ComctlLib.Key = "Time" Then
 frmTimeSheet.Show
 End If
 End Sub
- B. Private Sub sbrMain_PanelClick (ByVal Panel_
 As ComctlLib.Panel)
 If Panel.Key = "Time" Then
 frmTimeSheet.Show
 End If
 End Sub
- C. Private Sub sbrMain_Click ()
 If sbrMain.Panel = "Time" Then
 frmTimeSheet.Show
 End If
 End Sub
- D. Private Sub sbrMain_PanelClick (ByVal Panel_
 As ComctlLib.Panel)
 If sbrMain.Value = "Time" Then
 frmTimeSheet.Show
 End If
 End Sub

Answer: B.

SAMPLE EXAM



Pass4sure \$89 Lifetime Membership Features;

- Pass4sure \$89 Lifetime Membership includes Over **2100** Exams in One Price.
- **All** Pass4sure **Questions and Answers** are included in \$89 package.
- **All** Pass4sure audio exams are included **free** in \$89 package (See List).
- **All** Pass4sure study guides are included **free** in \$89 package (See List).
- **Lifetime** login access, no hidden fee, no login expiry.
- **Free updates** for Lifetime.
- **Free Download Access** to All new exams added in future.
- Accurate answers with **explanations** (If applicable).
- **Verified answers** researched by industry experts.
- Study Material **updated** on regular basis.
- Questions, Answers and Study Guides are downloadable in **PDF** format.
- Audio Exams are downloadable in **MP3** format.
- **No authorization** code required to open exam.
- **Portable** anywhere.
- 100% success **Guarantee**.
- **Fast**, helpful support **24x7**.



View list of All exams (Q&A) provided in \$89 membership;
<http://www.ipass4sure.com/allexams.asp>

View list of All Study Guides (SG) provided FREE for members;
<http://www.ipass4sure.com/study-guides.asp>

View list of All Audio Exams (AE) provided FREE for members;
<http://www.ipass4sure.com/audio-exams.asp>

Download All Exams Sample QAs.
<http://www.ipass4sure.com/samples.asp>

To purchase \$89 Lifetime Full Access Membership click here (One time fee)
<https://www.regnow.com/softsell/nph-softsell.cgi?item=30820-3>

3COM	CompTIA	Filemaker	IBM	LPI	OMG	Sun
ADOBE	ComputerAssociates	Fortinet	IISFA	McAfee	Oracle	Sybase
APC	CWNP	Foundry	Intel	McData	PMI	Symantec
Apple	DELL	Fujitsu	ISACA	Microsoft	Polycom	TeraData
BEA	ECCouncil	GuidanceSoftware	ISC2	Mile2	RedHat	TIA
BICSI	EMC	HDI	ISEB	NetworkAppliance	Sair	Tibco
CheckPoint	Enterasys	Hitachi	ISM	Network-General	SASInstitute	TruSecure
Cisco	ExamExpress	HP	Juniper	Nokia	SCP	Veritas
Citrix	Exin	Huawei	Legato	Nortel	See-Beyond	Vmware
CIW	ExtremeNetworks	Hyperion	Lotus	Novell	SNIA	

and many others.. See complete list Here

