



# 70-226

## Microsoft

*Designing Highly Available Web Solutions with Microsoft Windows 2000 Server Technologies*

Thousands of IT Professionals before you have already passed their 70-226 certification exams using the Microsoft 70-226 Practice Exam from [ipass4sure.com](http://ipass4sure.com). Once you start using our 70-226 exam questions you simply can't stop! You are guaranteed to pass your Microsoft 70-226 test with ease and in your first attempt.

Here's what you can expect from the [ipass4sure](http://ipass4sure.com) Microsoft 70-226 course:

- \* Up-to-Date Microsoft 70-226 questions designed to familiarize you with the real exam.
- \* 100% correct Microsoft 70-226 answers you simply can't find in other 70-226 courses.
- \* All of our tests are easy to download. Your file will be saved as a 70-226 PDF.
- \* Microsoft 70-226 brain dump free content featuring the real 70-226 test questions.

Microsoft 70-226 Certification Exam is of core importance both in your Professional life and Microsoft Certification Path. With Microsoft Certification you can get a good job easily in the market and get on your path for success. Professionals who passed Microsoft 70-226 Certification Exam are an absolute favorite in the industry. If you pass Microsoft 70-226 Certification Exam then career opportunities are open for you.

Our 70-226 Questions & Answers provide you an easy solution to your Microsoft 70-226 Exam Preparation. Our 70-226 Q&As contains the most updated Microsoft 70-226 real tests. You can use our 70-226 Q&As on any PC with most versions of Acrobat Reader and prepare the exam easily.

## Topic 1, Northwind Traders, Scenario

### Background

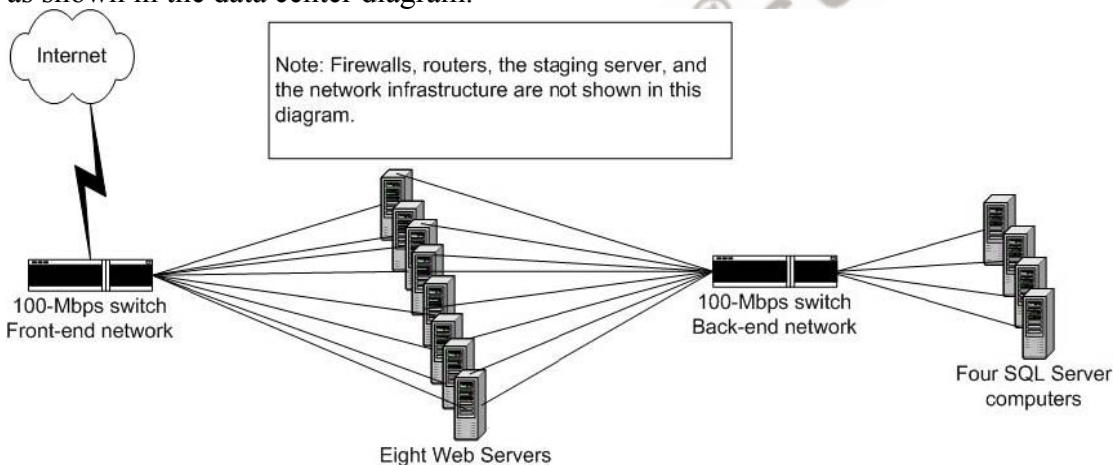
Northwind Traders has been one of the top three Internet florist Web sites for the past three years. During an average day, the company processes 50,000 orders. However, during the week before Mother's Day (the second Sunday in May), the order volume goes up dramatically. Last year, the company processed 1 million orders during this week. However, the Web site did not perform well. Northwind Traders estimates that it lost as many as 1 million additional orders.

This year, the company expects traffic on the Web site to be double that of last year. Northwind Traders wants to make sure that the Web site infrastructure is prepared to handle as many as 4 million orders during the week proceeding this year's Mother's Day. Performance data gathered during the Mother's Day period last year shows that the following areas were significant bottlenecks:

1. Access to the product catalog database
2. The network connection from the Internet data center to the Internet
3. SSL Session initialization

### Existing Environment

The company's Web site is currently located in one Internet data center in San Francisco, as shown in the data center diagram.



The Web site has the following characteristics:

#### Web servers

1. Eight Web servers each contain four CPUs and 2 GB of RAM. The Web servers are configured in an NLB cluster that has an affinity setting of None.
2. During peak periods on a typical day, the average CPU use for the Web servers is 40 percent.
3. During peak periods on a typical day, the average use of the network adapter on the back-end network for each Web server is 25 percent.

#### Database servers

1. Four Microsoft SQL Server computers each contain eight CPUs and 4GB of RAM.
2. During peak periods on a typical day, the average CPU use for the SQL Server computers is 20 percent.
3. During peak periods on a typical day, the average of the network adapter on the back-end network for each SQL Server computer is 50 percent.

## Databases

1. Customer profile and login information is kept in one unpartitioned SQL Server database.
2. The product catalog is kept in one unpartitioned SQL Server database and is updated nightly.
3. Shopping cart state is managed in a SQL Server database.

## General

1. All payment-processing traffic is encrypted by using SSL
2. There is no routing to the Internet from the back-end network.

## Business Requirements

The following business requirements must be met for the Mother's Day traffic:

Temporary Internet data centers for the months of April and May

1. The Web site will be replicated to three new temporary Internet data centers. Customers will be served by servers nearest their home locations.
2. The customer base will be divided into four regions of the country: northeast, southeast, Midwest, and west. One Internet data center will be located in each region. The existing San Francisco data center will serve the west region.
3. In the event of a network outage at one data center, the Web sites will remain available and fully functional at other data center locations for customers in those regions. Customers in the region experiencing an outage can reconnect to a Web site in another region to place an order. However, any shopping activity not completed at the of the outage will be lost.

## General

1. Order response time must be almost the same as on a normal day.
2. All services of the Web sites must be highly available in the event of network or server hardware failure.
3. The company's server administrators must be able to fully administer all servers from remote locations.
4. Security of Web content and user profile information must be maintained at all times.

## Technical Requirements

The following technical requirements must be considered

### Additional servers

1. For the months of April and May, Northwind Traders will lease 24 servers to be used as front-end Web servers. These servers each have two CPUs and 512 MB of RAM.
2. For the months of April and May, Northwind Traders will lease 12 servers to be used as back-end SQL Server computers. These servers each have eight CPUs and 4 GB of RAM.

## General

1. Windows 2000 Advanced Server will be installed on all servers. Microsoft Application Center 2000 will be deployed on all Web Servers.
2. Necessary network infrastructure services in the new Internet data centers will be provided by the leases Web or database servers.
3. Only HTTP, HTTPS, and VPN traffic will be allowed through the firewall.
4. All content staging will occur in the San Francisco data center.
5. A common method will be used to replicate Web content from staging server to each regional Web site. The replication method must have restart support in the event of a

dropped connection.

**Topic 1, Northwind traders (12 Questions)**

---

**QUESTION 1**

You need to design a rollback and recovery strategy for content changes to the Web servers. Which element or elements should you include in your design? (Choose all that apply.)

- A. Create an Application Center Web cluster that includes the two staging servers.
- B. Add a second staging server on one of the new Internet data centers.
- C. Create an Application Center COM+ cluster that includes the two staging servers.
- D. Take one of the staging servers offline until it is verified that the newly deployed content is error free.
- E. Add a second staging server in the west Internet data center
- F. Remove one of the staging servers from the synchronization loop until it is verified that the newly deployed content is error free.

Answer: A, E, F

---

**QUESTION 2**

You want to optimize the SSL initialization for the Web site. Which two actions should you take? (Each correct answer presents part of the solution. Choose two.)

- A. Design NLB clusters to use the affinity setting of None for the Web servers.
- B. Replace SSL encryption with IPsec.
- C. Use HTTP for all Web site traffic
- D. Add SSL hardware accelerator cards to all the Web servers.
- E. Add SSL hardware accelerator cards to all of SQL Server computers.
- F. Add SSL hardware accelerator cards to two Web servers in each NLB cluster. Filter all SSL traffic to those two servers.
- G. Design NLB clusters to use the affinity setting of Single for the Web servers.

Answer: F, G

---

**QUESTION 3**

You need to design the minimum network services necessary to support the new Internet data centers. Move the appropriate network service or services to each type of host server. (Use only network services that apply. Use each network service only once.)

Host Server Type	Network Service
<p data-bbox="136 430 237 459"><b>Collapse</b></p> <ul style="list-style-type: none"><li data-bbox="126 498 261 523">■ Web Server</li><li data-bbox="126 533 342 558">■ SQL Server Computer</li></ul>	<ul style="list-style-type: none"><li data-bbox="742 490 987 515">Internet Connection Sharing</li><li data-bbox="742 523 1040 548">Active Directory Domain Controller</li><li data-bbox="742 556 854 581">Internal DNS</li><li data-bbox="742 589 797 614">WINS</li><li data-bbox="742 622 781 647">VPN</li></ul> <p data-bbox="597 703 704 728">&lt;&lt;Move</p> <p data-bbox="581 784 721 809">Remove&gt;&gt;</p>

Get Certified @  
**TEST-KINGS**

Answer:

You need to design the minimum network services necessary to support the new Internet data centers. Move the appropriate network service or services to each type of host server. (Use only network services that apply. Use each network service only once.)

Host Server Type	Network Service
<p><b>Collapse</b></p> <ul style="list-style-type: none"><li>■ Web Server<ul style="list-style-type: none"><li>Internal DNS</li><li>Active Directory Domain Controller</li></ul></li><li>■ SQL Server Computer<ul style="list-style-type: none"><li>VPN</li><li>WINS</li></ul></li></ul>	<p>Internet Connection Sharing</p> <p>&lt;&lt;Move</p> <p>Remove&gt;&gt;</p>

**QUESTION 4**

You need to design a method for the company's server administrators to manage all their servers at the Internet data centers. Which method should you include in your design?

- A. Initiate a direct Telnet connection to each server over the Internet as needed.
- B. Initiate an HTTPS connection over the Internet to each server as needed.
- C. Initiate a VPN connection to a VPN server in each Internet data center over the Internet. Then make a Terminal Services connection to each server as needed.
- D. Initiate an encrypted Terminal Services connection over the Internet to each server as needed.
- E. Include a VPN connection to the Internet data center over the Internet. Then make a Telnet connection to each server as needed.

Answer: C

**QUESTION 5**

You need to design a scalable architecture for the SQL Server clusters to support the expected increase in volume before Mother's Day. You need to design database integration to support the temporary Web sites at the new Internet data centers.

SAMPLE EXAM



### Pass4sure \$89 Lifetime Membership Features;

- Pass4sure \$89 Lifetime Membership includes Over **2100** Exams in One Price.
- **All** Pass4sure **Questions and Answers** are included in \$89 package.
- **All** Pass4sure audio exams are included **free** in \$89 package (See List).
- **All** Pass4sure study guides are included **free** in \$89 package (See List).
- **Lifetime** login access, no hidden fee, no login expiry.
- **Free updates** for Lifetime.
- **Free Download Access** to All new exams added in future.
- Accurate answers with **explanations** (If applicable).
- **Verified answers** researched by industry experts.
- Study Material **updated** on regular basis.
- Questions, Answers and Study Guides are downloadable in **PDF** format.
- Audio Exams are downloadable in **MP3** format.
- **No authorization** code required to open exam.
- **Portable** anywhere.
- 100% success **Guarantee**.
- **Fast**, helpful support **24x7**.



View list of All exams (Q&A) provided in \$89 membership;  
<http://www.ipass4sure.com/allexams.asp>

View list of All Study Guides (SG) provided FREE for members;  
<http://www.ipass4sure.com/study-guides.asp>

View list of All Audio Exams (AE) provided FREE for members;  
<http://www.ipass4sure.com/audio-exams.asp>

Download All Exams Sample QAs.  
<http://www.ipass4sure.com/samples.asp>

To purchase \$89 Lifetime Full Access Membership click here (One time fee)  
<https://www.regnow.com/softsell/nph-softsell.cgi?item=30820-3>

3COM	CompTIA	Filemaker	IBM	LPI	OMG	Sun
ADOBE	ComputerAssociates	Fortinet	IISFA	McAfee	Oracle	Sybase
APC	CWNP	Foundry	Intel	McData	PMI	Symantec
Apple	DELL	Fujitsu	ISACA	Microsoft	Polycom	TeraData
BEA	ECCouncil	GuidanceSoftware	ISC2	Mile2	RedHat	TIA
BICSI	EMC	HDI	ISEB	NetworkAppliance	Sair	Tibco
CheckPoint	Enterasys	Hitachi	ISM	Network-General	SASInstitute	TruSecure
Cisco	ExamExpress	HP	Juniper	Nokia	SCP	Veritas
Citrix	Exin	Huawei	Legato	Nortel	See-Beyond	Vmware
CIW	ExtremeNetworks	Hyperion	Lotus	Novell	SNIA	

and many others.. See complete list Here

