



HP0-Y36

HP

Deploying HP Enterprise Networks

Thousands of IT Professionals before you have already passed their HP0-Y36 certification exams using the HP HP0-Y36 Practice Exam from ipass4sure.com. Once you start using our HP0-Y36 exam questions you simply can't stop! You are guaranteed to pass your HP HP0-Y36 test with ease and in your first attempt.

Here's what you can expect from the [ipass4sure](http://ipass4sure.com) HP HP0-Y36 course:

- * Up-to-Date HP HP0-Y36 questions designed to familiarize you with the real exam.
- * 100% correct HP HP0-Y36 answers you simply can't find in other HP0-Y36 courses.
- * All of our tests are easy to download. Your file will be saved as a HP0-Y36 PDF.
- * HP HP0-Y36 brain dump free content featuring the real HP0-Y36 test questions.

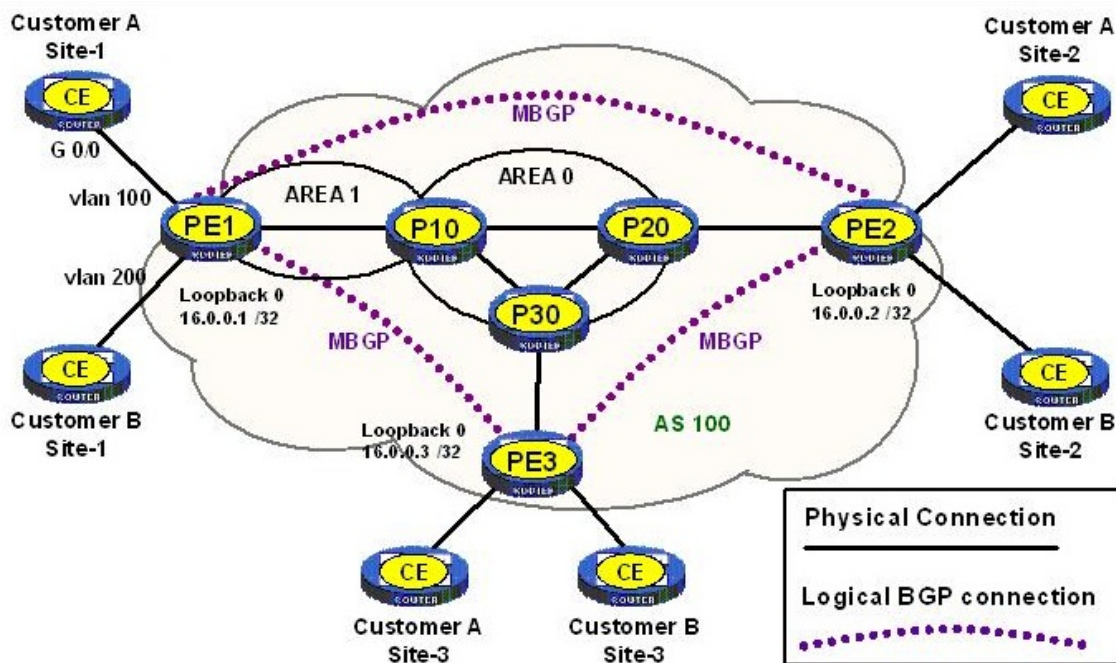
HP HP0-Y36 Certification Exam is of core importance both in your Professional life and HP Certification Path. With HP Certification you can get a good job easily in the market and get on your path for success. Professionals who passed HP HP0-Y36 Certification Exam are an absolute favorite in the industry. If you pass HP HP0-Y36 Certification Exam then career opportunities are open for you.

Our HP0-Y36 Questions & Answers provide you an easy solution to your HP HP0-Y36 Exam Preparation. Our HP0-Y36 Q&As contains the most updated HP HP0-Y36 real tests. You can use our HP0-Y36 Q&As on any PC with most versions of Acrobat Reader and prepare the exam easily.

Exam Name:	Deploying HP Enterprise Networks		
Exam Type:	HP	Exam Code:	HP0-Y36
Certification	HP Specialist	Total Questions:	54

Question: 1

Click the Exhibit button.



A provider of MPLS services configures MPLS Layer-3 VPN services for two customers. Each customer has three branch offices that will be interconnected. The address blocks chosen by the customers for each site are:

Customer	Site-1	Site-2	Site-3
A	10.1.0.0 /16	10.2.0.0 /16	10.3.0.0 /16
B	10.1.0.0 /16	10.2.0.0 /16	10.3.0.0 /16

The provider uses OSPF as its IGP with the Loopback 0 addresses shown as the OSPF router-id and the MPLS LSR-ID. Customer A Site 1 successfully pings Customer A Site 2. This ICMP echo request is captured on the Ethernet segment between routers P-10 and P-20. What is found on this packet capture? (Select two.)

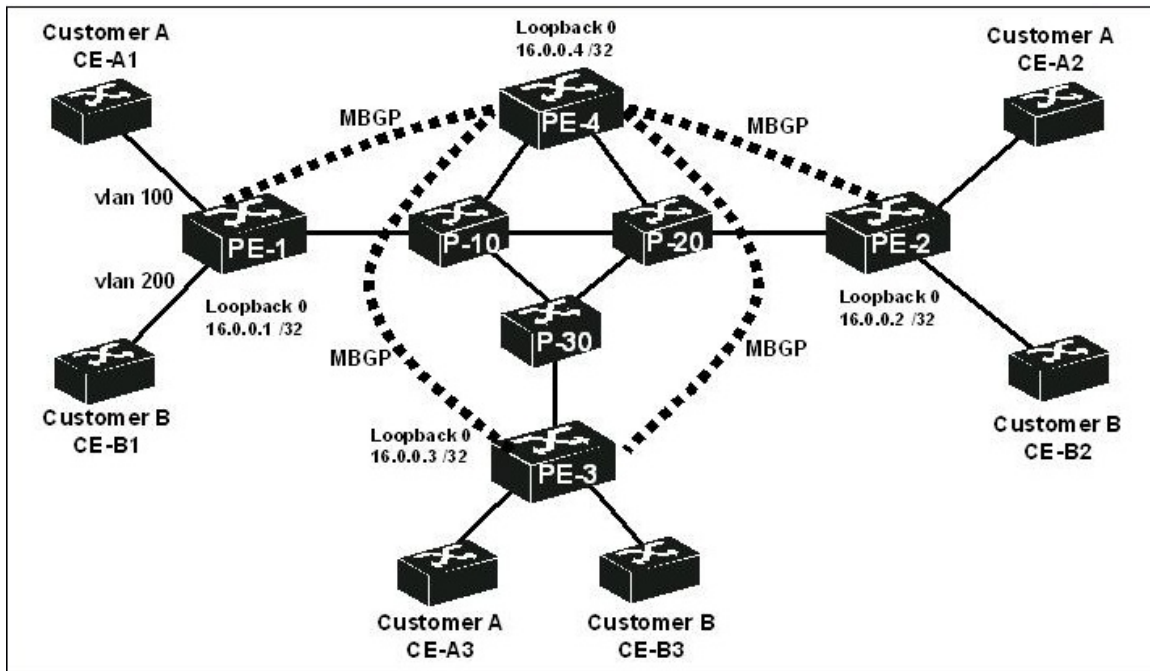
- A. MPLS VPN label
- B. VPN target
- C. MPLS outer label corresponding to the LSR-ID of P-20
- D. MPLS outer label corresponding to FEC 16.0.0.2
- E. route distinguisher

Answer: A, D

Question: 2

Click the Exhibit button.

Exam Name:	Deploying HP Enterprise Networks		
Exam Type:	HP	Exam Code:	HP0-Y36
Certification	HP Specialist	Total Questions:	54



A provider of MPLS services configures MPLS Layer-3 VPN services for two customers. Each customer has three branch offices that will be interconnected. The address blocks chosen by the customers for each site are:

Customer	VPN-instance	Site-1	Site-2	Site-3
A	Cust-A	10.1.0.0 /16	10.2.0.0 /16	10.3.0.0 /16
B	Cust-B	10.1.0.0 /16	10.2.0.0 /16	10.3.0.0 /16

The provider has established only four Multi-Protocol BGP peers as shown in the exhibit. PE-4 has no customer connections. Neither MPLS L3VPN is functional. Which configuration steps are required if this topology is to be operational for both customers? (Select two.)

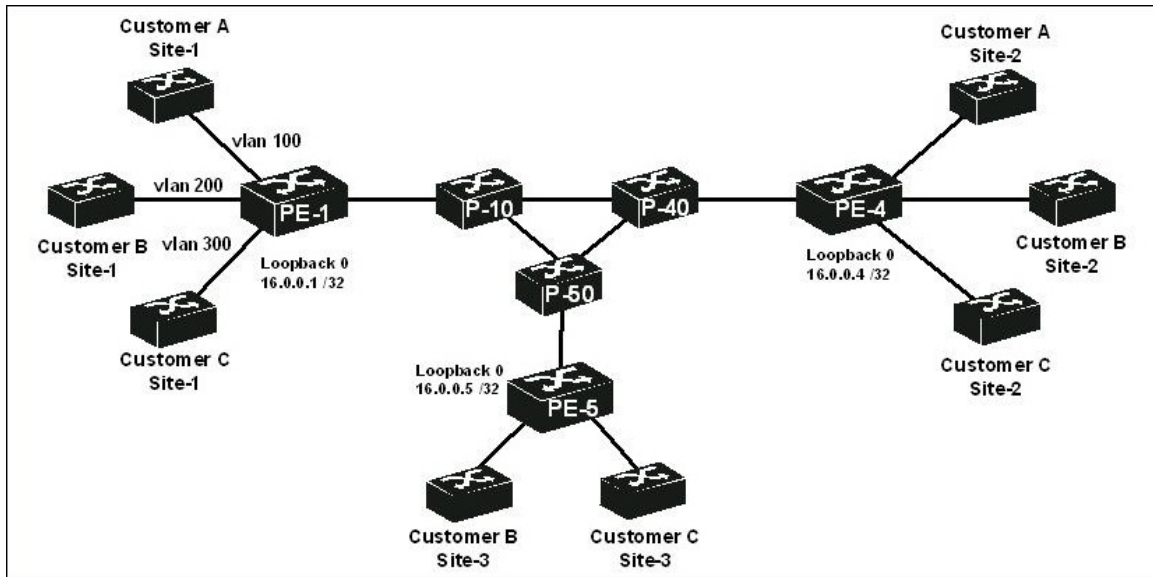
- A. Create VPN instances Customer A and Customer B on PE-4.
- B. Configure PE-4 as a route-reflector within the bgp l3vpn-family.
- C. Configure PE-4 as a route-reflector within the ipv4-family vpnv4.
- D. Configure PE-4 as a route-reflector within the ipv4-family vpn-instance Cust-A and vpn instance Customer B.
- E. Configure PE-4 as a bgp route-reflector.
- F. Configure MBGP peers for P-10, P-20, and P-30.

Answer: A, C

Question: 3

Click the Exhibit button.

Exam Name:	Deploying HP Enterprise Networks		
Exam Type:	HP	Exam Code:	HP0-Y36
Certification	HP Specialist	Total Questions:	54



A provider of MPLS services offers multiple types of MPLS-based VPNs to its customers. Provider Edge router PE-1 directly connects to the following three customers:

Customer	MPLS service	Number of Sites
A	MPLS L2VPN Martini mode	2
B	VPLS - Kompella mode	3
C	MPLS L3VPN	3

What is the minimum number of LDP peers established on Router PE-1?

- A. 1
- B. 2
- C. 3
- D. 4
- E. 5

Answer: B

Question: 4

Which technology in an MPLS L2VPN can provide ordered delivery of Ethernet frames?

- A. TCP-based L2VPN
- B. Control Word
- C. Ethernet raw access circuit
- D. VLAN pseudowire class
- E. MPLS EXP bits

Answer: B

Question: 5

Which BGP attributes must be present in a BGP routing update? (Select three.)

- A. community

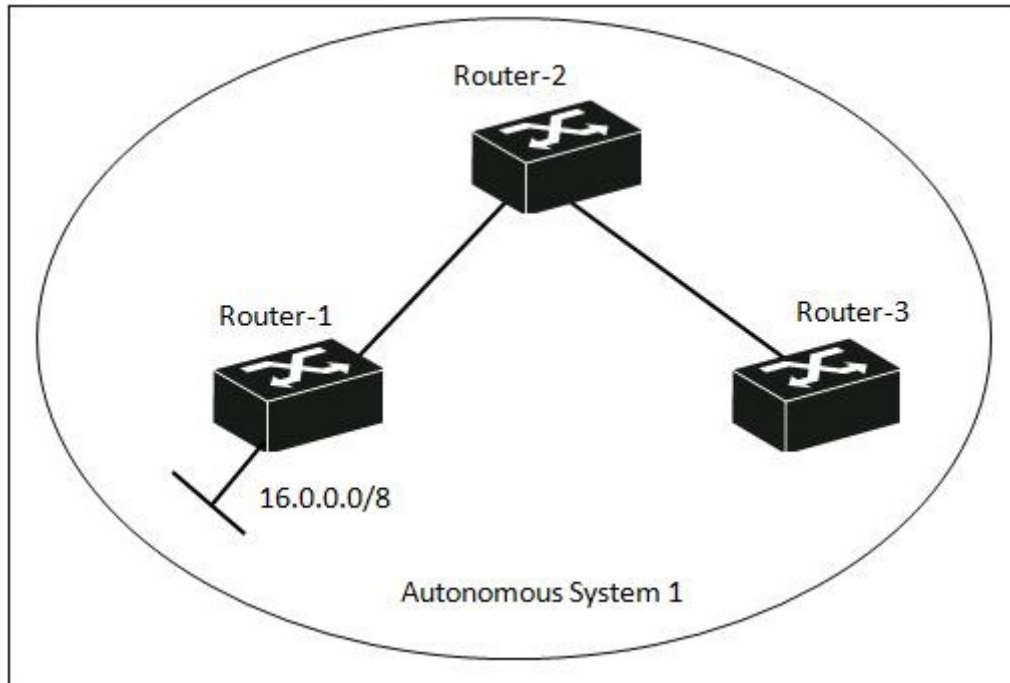
Exam Name:	Deploying HP Enterprise Networks		
Exam Type:	HP	Exam Code:	HP0-Y36
Certification	HP Specialist	Total Questions:	54

- B. MED
- C. origin type
- D. local preference
- E. AS path
- F. next hop

Answer: C, E, F

Question: 6

Click the Exhibit button.



Router-1 and Router-2 are BGP peers. Router-2 and Router-3 are BGP peers. However, Router 3 has not learned the 16.0.0.0/8 BGP route. How can you resolve this issue? (Select two.)

- A. Enable IGP synchronization on all routers.
- B. Prepend AS1 to the 16.0.0.0/8 route on Router-1.
- C. Enable BGP peering between Router-1 and Router-3.
- D. Adjust the local preference of 16.0.0.0/8 on Router-1.
- E. Configure Router-2 as a route reflector and Router-1 and Router-3 as clients.
- F. Establish a physical link between Router-1 and Router-3.

Answer: C, E

Question: 7

What can be included in BGP or multi-protocol BGP Network Layer Reach ability Information (NLRI)? (Select three.)

- A. AS 65001
- B. 10.0.0.0 /9
- C. MED
- D. Remote LDP Session
- E. BGP ORF

SAMPLE EXAM



Pass4sure \$89 Lifetime Membership Features;

- Pass4sure \$89 Lifetime Membership includes Over **2100** Exams in One Price.
- **All** Pass4sure **Questions and Answers** are included in \$89 package.
- **All** Pass4sure audio exams are included **free** in \$89 package (See List).
- **All** Pass4sure study guides are included **free** in \$89 package (See List).
- **Lifetime** login access, no hidden fee, no login expiry.
- **Free updates** for Lifetime.
- **Free Download Access** to All new exams added in future.
- Accurate answers with **explanations** (If applicable).
- **Verified answers** researched by industry experts.
- Study Material **updated** on regular basis.
- Questions, Answers and Study Guides are downloadable in **PDF** format.
- Audio Exams are downloadable in **MP3** format.
- **No authorization** code required to open exam.
- **Portable** anywhere.
- 100% success **Guarantee**.
- **Fast**, helpful support **24x7**.



View list of All exams (Q&A) provided in \$89 membership;
<http://www.ipass4sure.com/allexams.asp>

View list of All Study Guides (SG) provided FREE for members;
<http://www.ipass4sure.com/study-guides.asp>

View list of All Audio Exams (AE) provided FREE for members;
<http://www.ipass4sure.com/audio-exams.asp>

Download All Exams Sample QAs.
<http://www.ipass4sure.com/samples.asp>

To purchase \$89 Lifetime Full Access Membership click here (One time fee)
<https://www.regnow.com/softsell/nph-softsell.cgi?item=30820-3>

3COM	CompTIA	Filemaker	IBM	LPI	OMG	Sun
ADOBE	ComputerAssociates	Fortinet	IISFA	McAfee	Oracle	Sybase
APC	CWNP	Foundry	Intel	McData	PMI	Symantec
Apple	DELL	Fujitsu	ISACA	Microsoft	Polycom	TeraData
BEA	ECCouncil	GuidanceSoftware	ISC2	Mile2	RedHat	TIA
BICSI	EMC	HDI	ISEB	NetworkAppliance	Sair	Tibco
CheckPoint	Enterasys	Hitachi	ISM	Network-General	SASInstitute	TruSecure
Cisco	ExamExpress	HP	Juniper	Nokia	SCP	Veritas
Citrix	Exin	Huawei	Legato	Nortel	See-Beyond	Vmware
CIW	ExtremeNetworks	Hyperion	Lotus	Novell	SNIA	

and many others.. See complete list Here

