



642-617

Cisco

Deploying Cisco ASA Firewall Solutions (FIREWALL v1.0)

Thousands of IT Professionals before you have already passed their 642-617 certification exams using the Cisco 642-617 Practice Exam from ipass4sure.com. Once you start using our 642-617 exam questions you simply can't stop! You are guaranteed to pass your Cisco 642-617 test with ease and in your first attempt.

Here's what you can expect from the [ipass4sure](http://ipass4sure.com) Cisco 642-617 course:

- * Up-to-Date Cisco 642-617 questions designed to familiarize you with the real exam.
- * 100% correct Cisco 642-617 answers you simply can't find in other 642-617 courses.
- * All of our tests are easy to download. Your file will be saved as a 642-617 PDF.
- * Cisco 642-617 brain dump free content featuring the real 642-617 test questions.

Cisco 642-617 Certification Exam is of core importance both in your Professional life and Cisco Certification Path. With Cisco Certification you can get a good job easily in the market and get on your path for success. Professionals who passed Cisco 642-617 Certification Exam are an absolute favorite in the industry. If you pass Cisco 642-617 Certification Exam then career opportunities are open for you.

Our 642-617 Questions & Answers provide you an easy solution to your Cisco 642-617 Exam Preparation. Our 642-617 Q&As contains the most updated Cisco 642-617 real tests. You can use our 642-617 Q&As on any PC with most versions of Acrobat Reader and prepare the exam easily.

Exam Name:	Deploying Cisco ASA Firewall Solutions (FIREWALL v1.0)		
Exam Type:	Cisco	Exam Code:	642-617
Certification:	Cisco Certified Network Professional (CCNP) Cisco Certified Security Professional (CCSP)	Total Questions:	71

Question: 1

Which Cisco ASA feature enables the ASA to do these two things? 1) Act as a proxy for the server and generate a SYN-ACK response to the client SYN request. 2) When the Cisco ASA receives an ACK back from the client, the Cisco ASA authenticates the client and allows the connection to the server.

- A. TCPnormalizer
- B. TCP state bypass
- C. TCP intercept
- D. Basic threat detection
- E. Advanced threat detection
- F. Botnet traffic filter

Answer: C

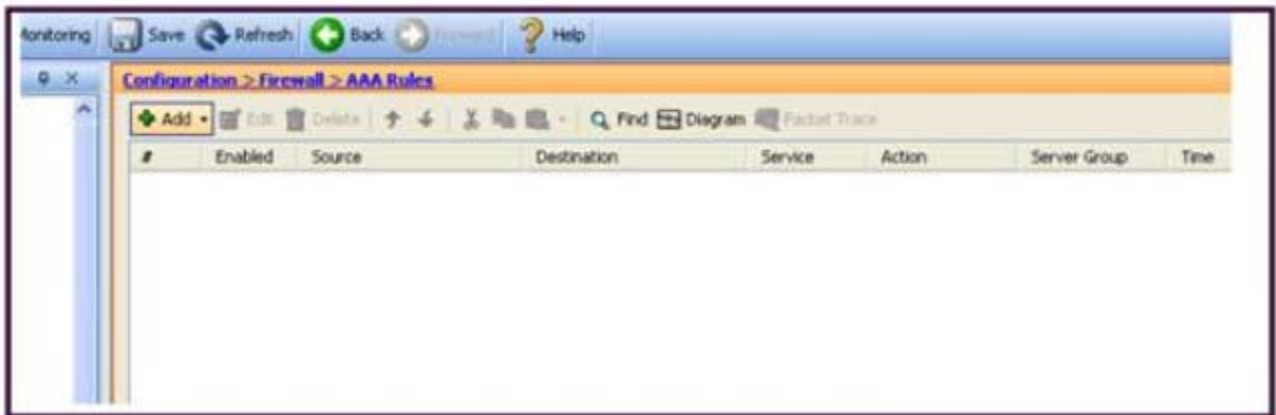
Question: 2

By default, which traffic can pass through a Cisco ASA that is operating in transparent mode without explicitly allowing it using an ACL?

- A. ARP
- B. BPDU
- C. CDP
- D. OSPF multicasts
- E. DHCP

Answer: A

Question: 3



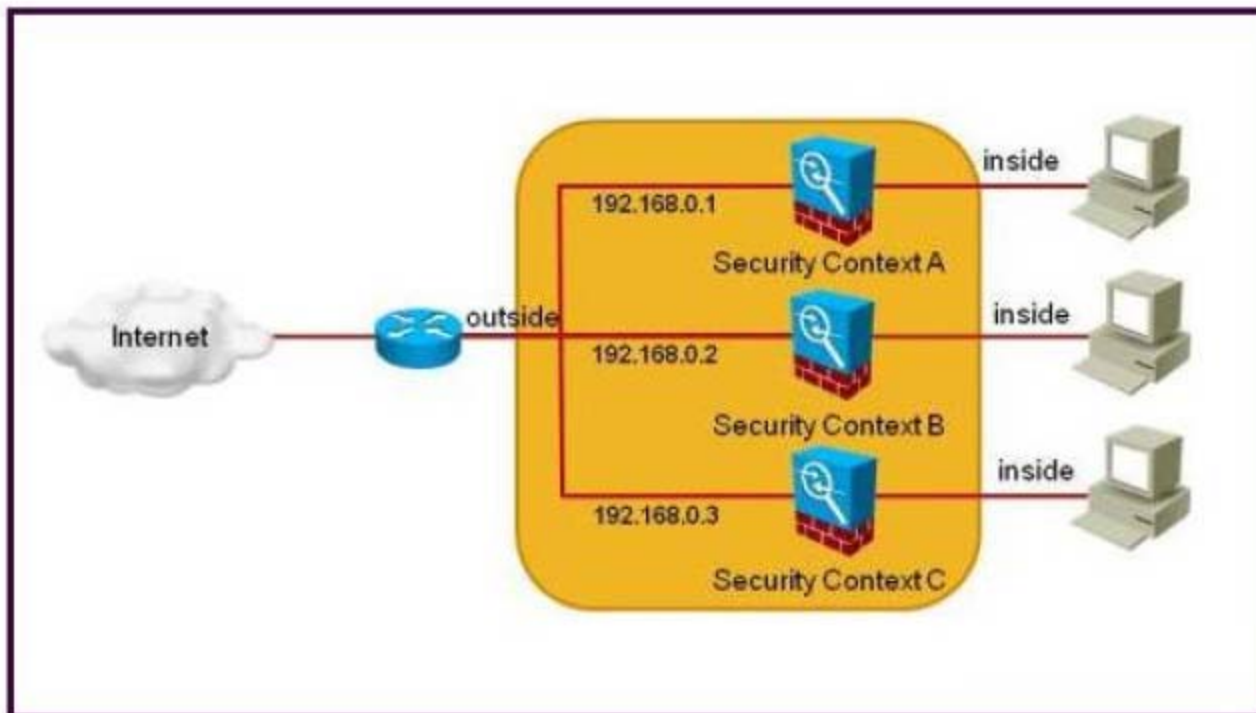
Refer to the exhibit. Which Cisco ASA feature can be configured using this Cisco ASDM screen?

- A. Cisco ASA command authorization using TACACS+
- B. AAA accounting to track serial,ssh, and telnet connections to the Cisco ASA
- C. Exec Shell access authorization using AAA
- D. Cut-thru proxy
- E. AAA authentication policy for Cisco ASDM access

Exam Name:	Deploying Cisco ASA Firewall Solutions (FIREWALL v1.0)		
Exam Type:	Cisco	Exam Code:	642-617
Certification:	Cisco Certified Network Professional (CCNP) Cisco Certified Security Professional (CCSP)	Total Questions:	71

Answer: D

Question: 4



Refer to the exhibit. The Cisco ASA is dropping all the traffic that is sourced from the internet and is destined to any security context inside interface. Which configuration should be verified on the Cisco ASA to solve this problem?

- A. The Cisco ASA has NAT control disabled on each security context.
- B. The Cisco ASA is using inside dynamic NAT on each security context.
- C. The Cisco ASA is using a unique MAC address on each security context outside interface.
- D. The Cisco ASA is using a unique dynamic routing protocol process on each security context.
- E. The Cisco ASA packet classifier is configured to use the outside physical interface to assign the packets to each security context.

Answer: C

Question: 5

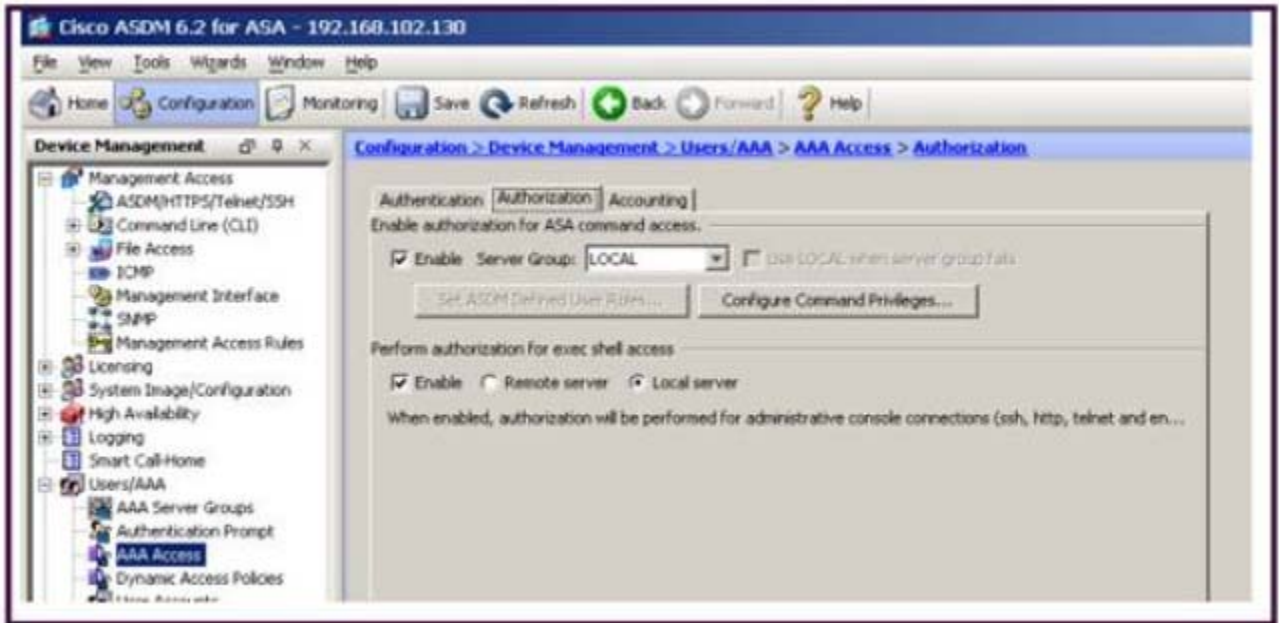
Which four types of ACL object group are supported on the Cisco ASA (release 8.2)? (Choose four.)

- A. Protocol
- B. Network
- C. Port
- D. Service
- E. Icmp-type
- F. Host

Exam Name:	Deploying Cisco ASA Firewall Solutions (FIREWALL v1.0)		
Exam Type:	Cisco	Exam Code:	642-617
Certification:	Cisco Certified Network Professional (CCNP) Cisco Certified Security Professional (CCSP)	Total Questions:	71

Answer: A, B, D, E

Question: 6



Refer to the exhibit. Which two CLI commands will result? (Choose two.)

- A. Aaa authorization network LOCAL
- B. Aaa authorization network default authentication-server LOCAL
- C. Aaa authorization command LOCAL
- D. Aaa authorization exec LOCAL
- E. Aaa authorization exec authentication-server LOCAL
- F. Aaa authorization exec authentication-server

Answer: C, D

Question: 7

Exam Name:	Deploying Cisco ASA Firewall Solutions (FIREWALL v1.0)		
Exam Type:	Cisco	Exam Code:	642-617
Certification:	Cisco Certified Network Professional (CCNP) Cisco Certified Security Professional (CCSP)	Total Questions:	71

Name	Match Conditions		
	Match Type	Criterion	Value
_default_GoToMyPC-tunnel	AND	Request Arguments Request URI	R _default_GoToMyPC-tunne R _default_GoToMyPC-tunne
_default_aim-messenger		Request Header Field (host)	R _default_aim-messenger
_default_firethru-tunnel	AND	Request Header Field (host) Request URI	R _default_firethru-tunnel_1 R _default_firethru-tunnel_2
_default_gator		Request Header Field (user-agent)	R _default_gator
_default_gnu-http-tunnel	AND	Request Arguments Request URI	R _default_gnu-http-tunnel_ R _default_gnu-http-tunnel_t
_default_http-tunnel		Request URI	R _default_http-tunnel
_default_httpport-tunnel		Request Header Field (host)	R _default_httpport-tunnel
_default_jazaa		Response Header Field Count (_default_... > 0	
_default_msn-messenger		Response Header Field (content-type)	R _default_msn-messenger
_default_shoutcast-tunneling-pr...		Request Header Field (_default_icy-meta..	R _default_shoutcast-tunne
_default_windows-media-player-...		Request Header Field (user-agent)	R _default_windows-media-pl
_default_yahoo-messenger		Request Body	R _default_yahoo-messenger

Refer to the exhibit. Which two statements about the class maps are true? (Choose two.)

- A. These class maps are referenced within the global policy by default for HTTP inspection.
- B. These class maps are all type inspect http class maps.
- C. These class maps classify traffic using regular expressions.
- D. These class maps are Layer 3/4 class maps.
- E. These class maps are used within theinspection_default class map for matching the default inspection traffic.

Answer: C, E

Question: 8

```
%ASA-2-106006: Deny inbound UDP from 10.1.1.1/520 to 224.0.0.9/520 on interface inside
%ASA-2-106006: Deny inbound UDP from 192.168.1.1/520 to 224.0.0.9/520 on interface inside
```

Refer to the exhibit. A Cisco ASA in transparent firewall mode generates the log messages seen in the exhibit. What should be configured on the Cisco ASA to allow the denied traffic?

- A. Extended ACL on the outside and inside interface to permit the multicast traffic
- B. Ether Type ACL on the outside and inside interface to permit the multicast traffic
- C. Stateful packet inspection
- D. Static ARP mapping
- E. Static MAC address mapping

Answer: A

SAMPLE EXAM



Pass4sure \$89 Lifetime Membership Features;

- Pass4sure \$89 Lifetime Membership includes Over **2100** Exams in One Price.
- **All** Pass4sure **Questions and Answers** are included in \$89 package.
- **All** Pass4sure audio exams are included **free** in \$89 package (See List).
- **All** Pass4sure study guides are included **free** in \$89 package (See List).
- **Lifetime** login access, no hidden fee, no login expiry.
- **Free updates** for Lifetime.
- **Free Download Access** to All new exams added in future.
- Accurate answers with **explanations** (If applicable).
- **Verified answers** researched by industry experts.
- Study Material **updated** on regular basis.
- Questions, Answers and Study Guides are downloadable in **PDF** format.
- Audio Exams are downloadable in **MP3** format.
- **No authorization** code required to open exam.
- **Portable** anywhere.
- 100% success **Guarantee**.
- **Fast**, helpful support **24x7**.



View list of All exams (Q&A) provided in \$89 membership;
<http://www.ipass4sure.com/allexams.asp>

View list of All Study Guides (SG) provided FREE for members;
<http://www.ipass4sure.com/study-guides.asp>

View list of All Audio Exams (AE) provided FREE for members;
<http://www.ipass4sure.com/audio-exams.asp>

Download All Exams Sample QAs.
<http://www.ipass4sure.com/samples.asp>

To purchase \$89 Lifetime Full Access Membership click here (One time fee)
<https://www.regnow.com/softsell/nph-softsell.cgi?item=30820-3>

3COM	CompTIA	Filemaker	IBM	LPI	OMG	Sun
ADOBE	ComputerAssociates	Fortinet	IISFA	McAfee	Oracle	Sybase
APC	CWNP	Foundry	Intel	McData	PMI	Symantec
Apple	DELL	Fujitsu	ISACA	Microsoft	Polycom	TeraData
BEA	ECCouncil	GuidanceSoftware	ISC2	Mile2	RedHat	TIA
BICSI	EMC	HDI	ISEB	NetworkAppliance	Sair	Tibco
CheckPoint	Enterasys	Hitachi	ISM	Network-General	SASInstitute	TruSecure
Cisco	ExamExpress	HP	Juniper	Nokia	SCP	Veritas
Citrix	Exin	Huawei	Legato	Nortel	See-Beyond	Vmware
CIW	ExtremeNetworks	Hyperion	Lotus	Novell	SNIA	

and many others.. See complete list [Here](#)

