



1Y0-222

Citrix

Citrix MetaFrame XP Presentation Server

Thousands of IT Professionals before you have already passed their 1Y0-222 certification exams using the Citrix 1Y0-222 Practice Exam from ipass4sure.com. Once you start using our 1Y0-222 exam questions you simply can't stop! You are guaranteed to pass your Citrix 1Y0-222 test with ease and in your first attempt.

Here's what you can expect from the [ipass4sure](http://ipass4sure.com) Citrix 1Y0-222 course:

- * Up-to-Date Citrix 1Y0-222 questions designed to familiarize you with the real exam.
- * 100% correct Citrix 1Y0-222 answers you simply can't find in other 1Y0-222 courses.
- * All of our tests are easy to download. Your file will be saved as a 1Y0-222 PDF.
- * Citrix 1Y0-222 brain dump free content featuring the real 1Y0-222 test questions.

Citrix 1Y0-222 Certification Exam is of core importance both in your Professional life and Citrix Certification Path. With Citrix Certification you can get a good job easily in the market and get on your path for success. Professionals who passed Citrix 1Y0-222 Certification Exam are an absolute favorite in the industry. If you pass Citrix 1Y0-222 Certification Exam then career opportunities are open for you.

Our 1Y0-222 Questions & Answers provide you an easy solution to your Citrix 1Y0-222 Exam Preparation. Our 1Y0-222 Q&As contains the most updated Citrix 1Y0-222 real tests. You can use our 1Y0-222 Q&As on any PC with most versions of Acrobat Reader and prepare the exam easily.

Question: 1.

Which of the following recreates the local host cache on a MetaFrame XP server?

- A. Running "dsmaint recreatelhc"
- B. Stopping and restarting the IMA service
- C. Stopping the IMA service; setting HKLM\Software\Citrix\IMA\Runtime\CacheLHC to 0; starting the IMA service
- D. Stopping the IMA service; setting the HKLM\Software\Citrix\IMA\Runtime\DSRequired to 1; starting the IMA service

Answer: A

Explanation:

Should be answer A. Answer B: Stopping and restarting the IMA service only forces a refresh of the local host cache. If the lhc needs to be recreated (which the question states), you need to run 'dsmaint recreatelhc'.

Reference:

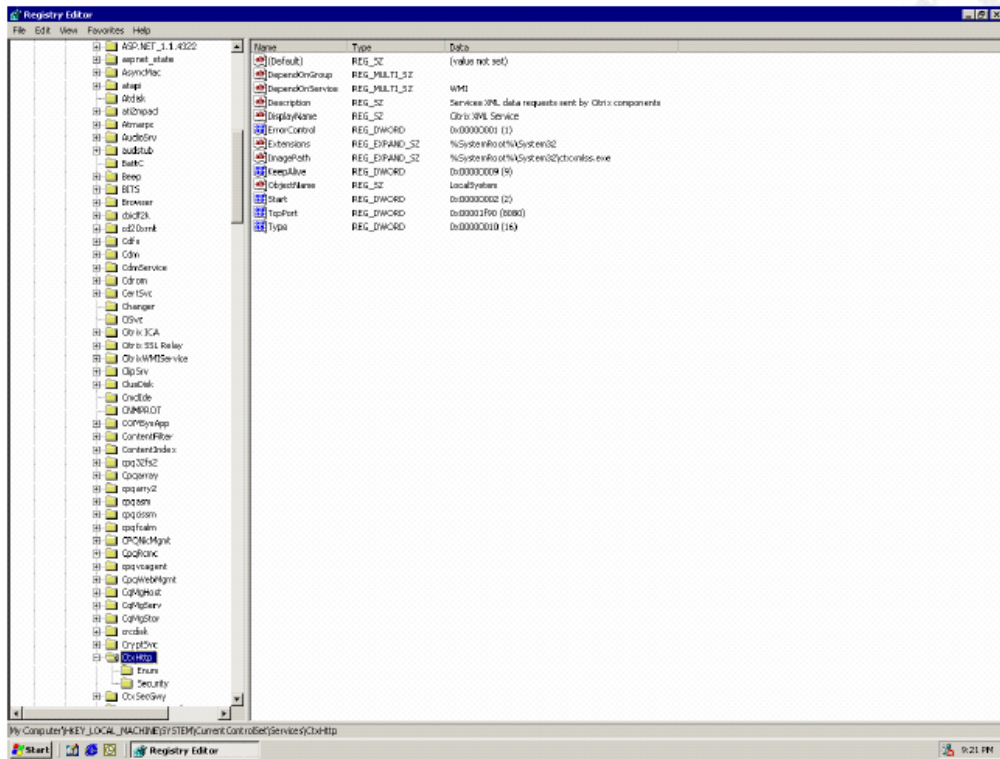
<http://support.citrix.com/kb/entry!default.jspa?categoryID=118&entryID=1803&fromSearchPage=true>

Question: 2.

Where in the registry can a Citrix administrator locate the TCP port for the Citrix XML Service?

- A. HKEY_LOCAL_MACHINE\SYSTEM\Software\Citrix\TcpPort
- B. HKEY_LOCAL_MACHINE\SYSTEM\CurrentControlSet\Control\CtxHttp\TcpPort
- C. HKEY_LOCAL_MACHINE\SYSTEM\Software\Services\CtxHttp\TcpPort
- D. HKEY_LOCAL_MACHINE\SYSTEM\CurrentControlSet\Services\CtxHttp\TcpPort

Answer: D



Reference:

The citrix course material for 1y0-221 on page 616.

Question: 3.

Arthur must rename the Program Neighborhood configuration file on his MetaFrame XP Server.

Which tool can be used to perform this task?

- A. Internet Explorer
- B. ICA Client Web Manager
- C. The Management Console for MetaFrame XP
- D. Program Neighborhood Agent Administration Tool

Answer: D

Question: 4.

Which command can be used to automatically configure the ICA Client reconnection settings on a MetaFrame XP server or server farm?

- A. acrcfg
- B. icareset
- C. reconnect ica
- D. mfclient /reconnect

Answer: A

Explanation:

acrcfg is used to configure Auto Client Reconnect settings in an MFXP farm or specific server

Question: 5.

Which statements are true concerning the ICA Client? (Choose three)

- A. When in mixed mode, only MetaFrame XP Presentation Servers that are master ICA Browsers respond to UDP broadcasts.
- B. The only method of communication for an ICA Client to a MetaFrame XP Presentation Server is through the XML service.
- C. UDP broadcasts are sent to the ICA browser on TCP port 1494.
- D. By default, Citrix XML Service is installed on the MetaFrame XP Presentation Server.
- E. TCP port 80 is the default configuration for the XML service.

Answer: A, D, E

D: XML is installed by default on every server.

Not C: UDP broadcasts is not using TCP port 1494.

Question: 6.

Which of the following is not a feature of SpeedScreen browser acceleration?

- A. Sectioning enabler
- B. Progressive drawing
- C. Responsive scrolling
- D. Background image delivery

Answer: A

Explanation:

There is no function that is named "Sectioning Enabler" in Speedscreen

Question: 7.

Which Web browser based tool is responsible for allowing users to customize the settings and functionality of the Program Neighborhood agent?

- A. Internet Explorer
- B. ICA Client Web Manager
- C. The Management Console for MetaFrame XP
- D. Program Neighborhood Admin Agent tool

Answer: D

Question: 8.

A user in Los Angeles, which is in the Pacific time zone, logs on to a MetaFrame server in Fort Lauderdale, which is in the Eastern time zone, and launches Microsoft Outlook as a published application.

Which Citrix feature will allow this user's local time stamp to be reflected when viewing and sending emails?

- A. Per Server Time Update
- B. Interprocess Time Manager
- C. Clock update Zone Support
- D. Per User Time Zone Support

Answer: D

SAMPLE EXAM



Pass4sure \$89 Lifetime Membership Features;

- Pass4sure \$89 Lifetime Membership includes Over **2100** Exams in One Price.
- **All** Pass4sure **Questions and Answers** are included in \$89 package.
- **All** Pass4sure audio exams are included **free** in \$89 package (See List).
- **All** Pass4sure study guides are included **free** in \$89 package (See List).
- **Lifetime** login access, no hidden fee, no login expiry.
- **Free updates** for Lifetime.
- **Free Download Access** to All new exams added in future.
- Accurate answers with **explanations** (If applicable).
- **Verified answers** researched by industry experts.
- Study Material **updated** on regular basis.
- Questions, Answers and Study Guides are downloadable in **PDF** format.
- Audio Exams are downloadable in **MP3** format.
- **No authorization** code required to open exam.
- **Portable** anywhere.
- 100% success **Guarantee**.
- **Fast**, helpful support **24x7**.



View list of All exams (Q&A) provided in \$89 membership;
<http://www.ipass4sure.com/allexams.asp>

View list of All Study Guides (SG) provided FREE for members;
<http://www.ipass4sure.com/study-guides.asp>

View list of All Audio Exams (AE) provided FREE for members;
<http://www.ipass4sure.com/audio-exams.asp>

Download All Exams Sample QAs.
<http://www.ipass4sure.com/samples.asp>

To purchase \$89 Lifetime Full Access Membership click here (One time fee)
<https://www.regnow.com/softsell/nph-softsell.cgi?item=30820-3>

3COM	CompTIA	Filemaker	IBM	LPI	OMG	Sun
ADOBE	ComputerAssociates	Fortinet	IISFA	McAfee	Oracle	Sybase
APC	CWNP	Foundry	Intel	McData	PMI	Symantec
Apple	DELL	Fujitsu	ISACA	Microsoft	Polycom	TeraData
BEA	ECCouncil	GuidanceSoftware	ISC2	Mile2	RedHat	TIA
BICSI	EMC	HDI	ISEB	NetworkAppliance	Sair	Tibco
CheckPoint	Enterasys	Hitachi	ISM	Network-General	SASInstitute	TruSecure
Cisco	ExamExpress	HP	Juniper	Nokia	SCP	Veritas
Citrix	Exin	Huawei	Legato	Nortel	See-Beyond	Vmware
CIW	ExtremeNetworks	Hyperion	Lotus	Novell	SNIA	

and many others.. See complete list Here

