



352-001

Cisco

Cisco ADVDESIGN

Thousands of IT Professionals before you have already passed their 352-001 certification exams using the Cisco 352-001 Practice Exam from ipass4sure.com. Once you start using our 352-001 exam questions you simply can't stop! You are guaranteed to pass your Cisco 352-001 test with ease and in your first attempt.

Here's what you can expect from the [ipass4sure](http://ipass4sure.com) Cisco 352-001 course:

- * Up-to-Date Cisco 352-001 questions designed to familiarize you with the real exam.
- * 100% correct Cisco 352-001 answers you simply can't find in other 352-001 courses.
- * All of our tests are easy to download. Your file will be saved as a 352-001 PDF.
- * Cisco 352-001 brain dump free content featuring the real 352-001 test questions.

Cisco 352-001 Certification Exam is of core importance both in your Professional life and Cisco Certification Path. With Cisco Certification you can get a good job easily in the market and get on your path for success. Professionals who passed Cisco 352-001 Certification Exam are an absolute favorite in the industry. If you pass Cisco 352-001 Certification Exam then career opportunities are open for you.

Our 352-001 Questions & Answers provide you an easy solution to your Cisco 352-001 Exam Preparation. Our 352-001 Q&As contains the most updated Cisco 352-001 real tests. You can use our 352-001 Q&As on any PC with most versions of Acrobat Reader and prepare the exam easily.

Question: 1

Lafayette Productions is looking for a new ISP that has improved availability, load balancing, and catastrophe protection. Which type of ISP connectivity solution would be best?

- A. Single run
- B. Multi-homed
- C. Stub domain EBGP
- D. Direct BGP peering

Answer: B

Question: 2

Which two items are true about QoS in MPLS VPN (RFC 2547bis) networks? (Choose two.)

- A. On egress from the Edge-LSR, the EXP field is used for PHB QoS towards the CE.
- B. MPLS can force packets into specific paths and bandwidths based on Edge-LSR mapping of DSCP to EXP.
- C. DiffServ information must be made known to the LSR in the MPLS header using the EXP field.
- D. MPLS QoS is a scalable and simple solution because it only requires application at the Edge-LSR.

Answer: B, C

Question: 3

EIGRP performs route summarization at the interface level with the ip summary-address command. Which three statements correctly describe EIGRP route summarization? (Choose three.)

- A. Summary routes are inserted in the routing table with a next hop of null 0 and a high administrative distance, to prevent black holing of traffic.
- B. By default, EIGRP automatically summarizes internal routes, but only each time a major network boundary is crossed.
- C. EIGRP route summarization can reduce the query diameter to help prevent SIA problems.
- D. The metric for each summarized route is inherited from the lowest metric of the component routes.

Answer: B, C, D

Question: 4

The headend router propagates which two resources for constrained based path computation with MPLS Traffic Engineering? (Choose two.)

- A. Link delay
- B. Link jitter
- C. Link bandwidth and link affinity
- D. Average link utilization

Answer: C

Question: 5

Flex Links are a pair of a Layer 2 interfaces (switchports or port channels), where one interface is configured to act as a backup to the other. Which two statements are correct regarding Flex Links?

- A. An interface can only belong to single Flex Links.

- B. An interface can belong to multiple Flex Links.
- C. Flex Links operate only over single pairs of links.
- D. Flex Links automatically disable STP so no BPDUs are propagated.

Answer: C, D

Question: 6

Which option is correct in terms of designing a policy in which more than one class share a queue?

- A. It should be deployed throughout the network to simplify the design.
- B. It must be avoided under all circumstances.
- C. It requires consideration of the performance targets of classes sharing the queue.
- D. It will result in a negative class.

Answer: C

Question: 7

The packets discovered are considered part of an attack. What benefit can be obtained by using a packet scrubbing device to redirect them?

- A. Packet scrubbing forwards valid traffic.
- B. Packet scrubbing provides better logging of suspected attacks.
- C. Packet scrubbing is "line rate."
- D. Packet scrubbing filters all traffic.

Answer: A

Question: 8

Which item is the primary requirement when deploying OSPF graceful restart on a router?

- A. Some form of fast Layer 2 down detection must be enabled on the router.
- B. The adjacent router must support graceful restart helper mode.
- C. The adjacent routers must be enabled to forward traffic during the failure.
- D. Aggressive routing protocol hellos and keepalives must be running on the router.

Answer: B

Question: 9

A virtual storage area network (VSAN) is a collection of ports from a set of connected Fibre Channel switches, that form a virtual fabric. Which technology allows centralized storage services to be shared across different VSANs?

- A. IVR
- B. FSPF
- C. FICON
- D. SANTap

Answer: A

Question: 10

NetFlow provides valuable information about network users and applications, peak usage times, and traffic routing. Which function is of NetFlow?

- A. Monitor configuration changes

- B. Monitor CPU utilization
- C. Monitor link utilization
- D. Generate traps for failure conditions

Answer: C

Question: 11

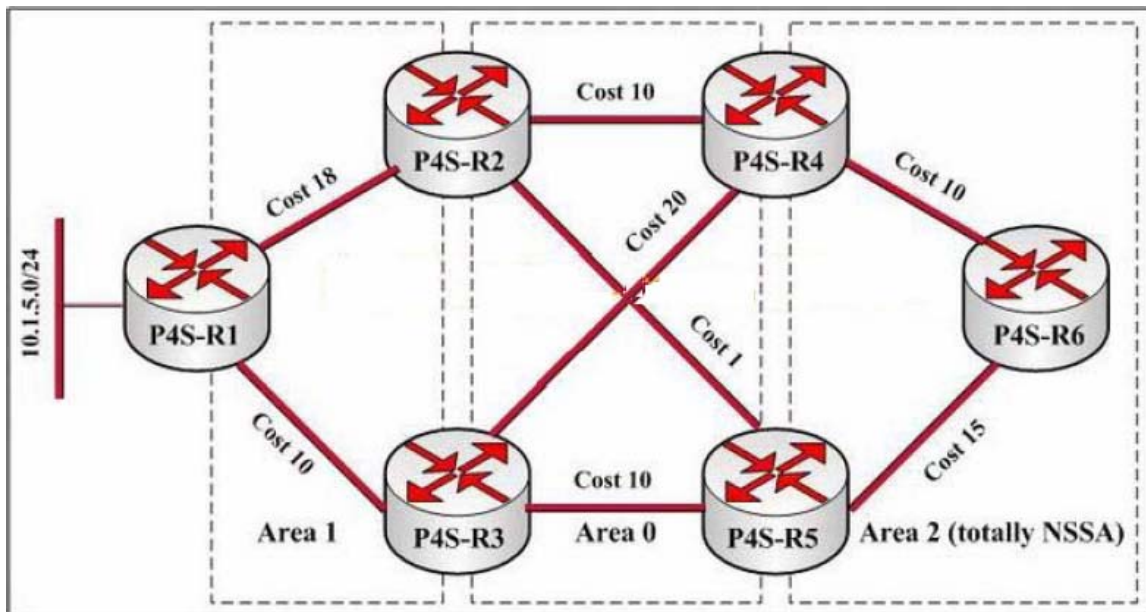
What information can you get from TCP flags while assessing an attack?

- A. Source of the attack
- B. Type of attack
- C. Target of the attack
- D. Priority of the attack traffic

Answer: B

Question: 12

You are a network technician for the P4S company, study the exhibit carefully. P4S-R1 is redistributing 10.1.5.0/24 into Area 1 in this network. Which LSA containing 10.1.5.0/24 will P4S-R6 have in its database?



- A. P4S-R6 will have a border router (type 4) LSA in its local database for 10.1.5.0/24.
- B. P4S-R6 will have an NSSA external (type 7) LSA in its local database for 10.1.5.0/24.
- C. P4S-R6 will have an external (type 5) LSA for 10.1.5.0/24 in its local database.
- D. P4S-R6 will not have any LSAs containing 10.1.5.0/24.

Answer: D

Question: 13

Scalability is provided in the server farm module by which of the following design strategies?

- A. Up to 10 Gbps of bandwidth at the access level
- B. Redundant servers at the access level
- C. Modular block design at the access level

D. High port densities at the access level

Answer: C

Question: 14

Which function is performed by the Community String field defined in a trap PDU?

- A. Enable reliable delivery of messages
- B. Allow authentication by management station
- C. Isolate the PDU within a defined region of the network
- D. Enable the routing of messages

Answer: B

Question: 15

RSVP is short for Resource Reservation Protocol. Which statement is true about the RSVP protocol?

- A. It is reserved bi-directionally by each originating node.
- B. It is only for avoiding packet drop on collision-prone media (such as Ethernet).
- C. It is initiated uni-directionally along the data path downstream from each requesting node.
- D. It is only shared by pairs of peers participating in delay-sensitive, real-time applications like VoIP.

Answer: C

Question: 16

Which is a requirement for performing attack detection by use of anomaly detection technologies?

- A. Syslog data
- B. Packet captures
- C. Baseline data
- D. Exploit signatures

Answer: C

Question: 17

You are the Cisco Network Designer in Company.com. What is the term for a logical SAN which provides isolation among devices physically connected to the same fabric?

- A. InterSwitch Link
- B. Virtua LAN
- C. Virtual Output Queuing
- D. virtual storage area network

Answer: D

Question: 18

The P4S company's external routers BGP peer with multiple service providers and external organizations. In all situations, the external routers are peered with their BGP neighbors through directly-connected interfaces. How does GTSM provide additional security for your BGP speakers?

- A. GTSM prevents the processing of BGP packets from devices that are not on the directly-connected interfaces.

SAMPLE EXAM



Pass4sure \$89 Lifetime Membership Features;

- Pass4sure \$89 Lifetime Membership includes Over **2100** Exams in One Price.
- **All** Pass4sure **Questions and Answers** are included in \$89 package.
- **All** Pass4sure audio exams are included **free** in \$89 package (See List).
- **All** Pass4sure study guides are included **free** in \$89 package (See List).
- **Lifetime** login access, no hidden fee, no login expiry.
- **Free updates** for Lifetime.
- **Free Download Access** to All new exams added in future.
- Accurate answers with **explanations** (If applicable).
- **Verified answers** researched by industry experts.
- Study Material **updated** on regular basis.
- Questions, Answers and Study Guides are downloadable in **PDF** format.
- Audio Exams are downloadable in **MP3** format.
- **No authorization** code required to open exam.
- **Portable** anywhere.
- 100% success **Guarantee**.
- **Fast**, helpful support **24x7**.



View list of All exams (Q&A) provided in \$89 membership;
<http://www.ipass4sure.com/allexams.asp>

View list of All Study Guides (SG) provided FREE for members;
<http://www.ipass4sure.com/study-guides.asp>

View list of All Audio Exams (AE) provided FREE for members;
<http://www.ipass4sure.com/audio-exams.asp>

Download All Exams Sample QAs.
<http://www.ipass4sure.com/samples.asp>

To purchase \$89 Lifetime Full Access Membership click here (One time fee)
<https://www.regnow.com/softsell/nph-softsell.cgi?item=30820-3>

3COM	CompTIA	Filemaker	IBM	LPI	OMG	Sun
ADOBE	ComputerAssociates	Fortinet	IISFA	McAfee	Oracle	Sybase
APC	CWNP	Foundry	Intel	McData	PMI	Symantec
Apple	DELL	Fujitsu	ISACA	Microsoft	Polycom	TeraData
BEA	ECCouncil	GuidanceSoftware	ISC2	Mile2	RedHat	TIA
BICSI	EMC	HDI	ISEB	NetworkAppliance	Sair	Tibco
CheckPoint	Enterasys	Hitachi	ISM	Network-General	SASInstitute	TruSecure
Cisco	ExamExpress	HP	Juniper	Nokia	SCP	Veritas
Citrix	Exin	Huawei	Legato	Nortel	See-Beyond	Vmware
CIW	ExtremeNetworks	Hyperion	Lotus	Novell	SNIA	

and many others.. See complete list [Here](#)

