



1D0-541

CIW

CIW v5 Database Design Specialist

Thousands of IT Professionals before you have already passed their 1D0-541 certification exams using the CIW 1D0-541 Practice Exam from ipass4sure.com. Once you start using our 1D0-541 exam questions you simply can't stop! You are guaranteed to pass your CIW 1D0-541 test with ease and in your first attempt.

Here's what you can expect from the [ipass4sure](http://ipass4sure.com) CIW 1D0-541 course:

- * Up-to-Date CIW 1D0-541 questions designed to familiarize you with the real exam.
- * 100% correct CIW 1D0-541 answers you simply can't find in other 1D0-541 courses.
- * All of our tests are easy to download. Your file will be saved as a 1D0-541 PDF.
- * CIW 1D0-541 brain dump free content featuring the real 1D0-541 test questions.

CIW 1D0-541 Certification Exam is of core importance both in your Professional life and CIW Certification Path. With CIW Certification you can get a good job easily in the market and get on your path for success. Professionals who passed CIW 1D0-541 Certification Exam are an absolute favorite in the industry. If you pass CIW 1D0-541 Certification Exam then career opportunities are open for you.

Our 1D0-541 Questions & Answers provide you an easy solution to your CIW 1D0-541 Exam Preparation. Our 1D0-541 Q&As contains the most updated CIW 1D0-541 real tests. You can use our 1D0-541 Q&As on any PC with most versions of Acrobat Reader and prepare the exam easily.

Question: 1

Which three pieces of information did E.F. Codd describe as necessary to retrieve a data value from a relational database?

- A. Attribute, domain, and tuple
- B. Entity, relation name, and domain
- C. Table name, primary key, and entity
- D. Attribute, relation name, and primary key

Answer: D

Question: 2

Which pair of relational algebraic operations requires union compatibility?

- A. Union and join
- B. Selection and projection
- C. Intersection and difference
- D. Cartesian product and intersection

Answer: C

Question: 3

Which term describes one or more database operations that are executed as a single unit?

- A. Update
- B. Transaction
- C. Encapsulation
- D. Operational group

Answer: B

Question: 4

Which statement best describes a candidate key?

- A. It is the primary key for an entity.
- B. It uniquely identifies every instance of an entity.
- C. One or more keys are joined together to form a composite key.
- D. One or more keys may be used to form a primary key.

Answer: D

Question: 5

Your enterprise is developing a database system that will contain highly sensitive data. Security of the data will take priority over database processing speed. Which database protection technique should be employed?

- A. Backups
- B. User views
- C. Encryption
- D. Integrity controls

Answer: C

Question: 6

The exhibit shows a table called Recreation Relation that relates a unique student identification number and a sports activity with a fee for participating in that activity. The Student_ID and Activity columns in the table are used together as a composite key. Which statement about the relation is correct?

Student_ID	Activity	Activity_Fee
1001	Bowling	50
1001	Racquetball	75
1002	Tennis	100
1003	Handball	35
1003	Swimming	40
1004	Bowling	50
1004	Fencing	125

Recreation Relation

- A. Activity_Fee is a determinant of Activity.
- B. Activity_Fee is partially dependent on the key.
- C. The table contains a transitive dependency.
- D. Activity_Fee is a determinant of Activity and Student_ID.

Answer: B

Question: 7

Which of the following best describes the two-tier database architecture?

- A. The user accesses a database server using a terminal.
- B. The user interface, data-processing logic, database access and data validation functions are performed on a mainframe server.
- C. The user interface and data validation functions are performed by the client whereas the data-processing logic is performed on a server.
- D. The user interface and data-processing logic are performed by the client whereas the server handles database access and data validation functions.

Answer: D

Question: 8

Your enterprise must decide whether to use a database management system. Which of the following best describes the functionality of a DBMS?

- A. A DBMS provides the ability to control data access and limit the number of users at one time.
- B. A DBMS provides the ability to maintain databases while providing increased security for the database.
- C. A DBMS allows users to access the database while allowing the database administrator to define views particular to individual sets of users.
- D. A DBMS provides the ability to define, create and maintain databases while providing controlled access to databases.

Answer: D

Question: 9

Which concurrency control method should be used only when conflicts between transactions rarely occur?

- A. Locking
- B. Time stamps
- C. Optimistic
- D. Serialization

Answer: C

Question: 10

Consider the Project relation shown in the exhibit as well as the following SQL statement:

```
DELETE FROM Project  
WHERE Cust_Name = Acme;
```

Which of the following tables shows the Project relation after execution of this SQL statement?

Cust_ID	Proj_ID	Cust_Name	Proj_Description	Status	Manager
1001	98-01	Acme	Reflow Study	Done	Rubio
1002	98-11	J & L	Quality Analysis	Start	Chang
1001	99-02	Acme	Process Analysis	Done	Jones
1003	99-12	Bravo Co	Efficiency Study	Start	Doe

Project Relation

A.

Cust_ID	Proj_ID	Cust_Name	Proj_Description	Status	Manager
1001	98-01	Acme	Reflow Study	Done	Rubio
1002	98-11	J & L	Quality Analysis	Start	Chang
1001	99-02	Acme	Process Analysis	Done	Jones
1003	99-12	Bravo Co	Efficiency Study	Start	Doe

B.

Cust_ID	Proj_ID	Cust_Name	Proj_Description	Status	Manager
1002	98-11	J & L	Quality Analysis	Start	Chang
1001	99-02	Acme	Process Analysis	Done	Jones
1003	99-12	Bravo Co	Efficiency Study	Start	Doe

C.

Cust_ID	Proj_ID	Cust_Name	Proj_Description	Status	Manager
1001	98-01	Acme	Reflow Study	Done	Rubio
1002	98-11	J & L	Quality Analysis	Start	Chang
1003	99-12	Bravo Co	Efficiency Study	Start	Doe

D.

Cust_ID	Proj_ID	Cust_Name	Proj_Description	Status	Manager
1002	98-11	J & L	Quality Analysis	Start	Chang
1003	99-12	Bravo Co	Efficiency Study	Start	Doe

A. A

Answer: A

Question: 11

What is the highest normal form of the relation(s) shown in the exhibit?

Registration_ID	Student_ID	Course_Code	First_Name	Last_Name
1001	S320	M3455	Teri	Chan
1002	S255	M3455	Carlos	Trujillo
1003	S511	A4343	Helen	Yang
1004	S812	S4511	Robert	Cray
1005	S320	A4343	Teri	Chan
1006	S255	M4422	Carlos	Trujillo
1007	S511	M4433	Helen	Yang
1008	S812	S2212	Robert	Cray

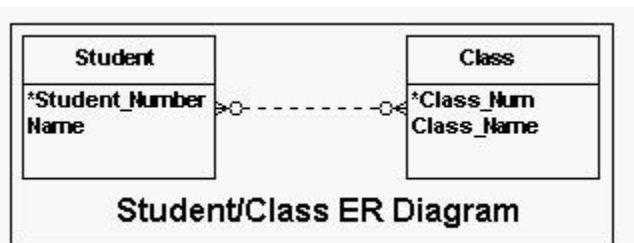
Registration Relation

- A. Second normal form
- B. First normal form
- C. Boyce-Codd normal form
- D. Third normal form

Answer: A

Question: 12

Consider the entity-relation (ER) diagram shown in the exhibit. When the logical database design phase is completed, which of the following is a valid DBDL description of the base relations for the ER diagram?



- A. STUDENT(
 Student_Number: integer NOT NULL
 Name: variable length character string length 20 NOT NULL)
 Primary Key Student_Number
 CLASS(
 Class_Num: integer NOT NULL
 Class_Name: integer NOT NULL)
 Primary Key Class_Num
- B. STUDENT(
 Student_Number: integer NOT NULL
 Name: variable length character string length 20 NOT NULL)
 Primary Key Student_Number
 CLASS(
 Class_Num: integer NOT NULL

SAMPLE EXAM



Pass4sure \$89 Lifetime Membership Features;

- Pass4sure \$89 Lifetime Membership includes Over **2100** Exams in One Price.
- **All** Pass4sure **Questions and Answers** are included in \$89 package.
- **All** Pass4sure audio exams are included **free** in \$89 package (See List).
- **All** Pass4sure study guides are included **free** in \$89 package (See List).
- **Lifetime** login access, no hidden fee, no login expiry.
- **Free updates** for Lifetime.
- **Free Download Access** to All new exams added in future.
- Accurate answers with **explanations** (If applicable).
- **Verified answers** researched by industry experts.
- Study Material **updated** on regular basis.
- Questions, Answers and Study Guides are downloadable in **PDF** format.
- Audio Exams are downloadable in **MP3** format.
- **No authorization** code required to open exam.
- **Portable** anywhere.
- 100% success **Guarantee**.
- **Fast**, helpful support **24x7**.



View list of All exams (Q&A) provided in \$89 membership;
<http://www.ipass4sure.com/allexams.asp>

View list of All Study Guides (SG) provided FREE for members;
<http://www.ipass4sure.com/study-guides.asp>

View list of All Audio Exams (AE) provided FREE for members;
<http://www.ipass4sure.com/audio-exams.asp>

Download All Exams Sample QAs.
<http://www.ipass4sure.com/samples.asp>

To purchase \$89 Lifetime Full Access Membership click here (One time fee)
<https://www.regnow.com/softsell/nph-softsell.cgi?item=30820-3>

3COM	CompTIA	Filemaker	IBM	LPI	OMG	Sun
ADOBE	ComputerAssociates	Fortinet	IISFA	McAfee	Oracle	Sybase
APC	CWNP	Foundry	Intel	McData	PMI	Symantec
Apple	DELL	Fujitsu	ISACA	Microsoft	Polycom	TeraData
BEA	ECCouncil	GuidanceSoftware	ISC2	Mile2	RedHat	TIA
BICSI	EMC	HDI	ISEB	NetworkAppliance	Sair	Tibco
CheckPoint	Enterasys	Hitachi	ISM	Network-General	SASInstitute	TruSecure
Cisco	ExamExpress	HP	Juniper	Nokia	SCP	Veritas
Citrix	Exin	Huawei	Legato	Nortel	See-Beyond	Vmware
CIW	ExtremeNetworks	Hyperion	Lotus	Novell	SNIA	

and many others.. See complete list Here

