



# 350-029

**Cisco**

*CCIE Written Exam*

Thousands of IT Professionals before you have already passed their 350-029 certification exams using the Cisco 350-029 Practice Exam from [ipass4sure.com](http://ipass4sure.com). Once you start using our 350-029 exam questions you simply can't stop! You are guaranteed to pass your Cisco 350-029 test with ease and in your first attempt.

Here's what you can expect from the [ipass4sure](http://ipass4sure) Cisco 350-029 course:

- \* Up-to-Date Cisco 350-029 questions designed to familiarize you with the real exam.
- \* 100% correct Cisco 350-029 answers you simply can't find in other 350-029 courses.
- \* All of our tests are easy to download. Your file will be saved as a 350-029 PDF.
- \* Cisco 350-029 brain dump free content featuring the real 350-029 test questions.

Cisco 350-029 Certification Exam is of core importance both in your Professional life and Cisco Certification Path. With Cisco Certification you can get a good job easily in the market and get on your path for success. Professionals who passed Cisco 350-029 Certification Exam are an absolute favorite in the industry. If you pass Cisco 350-029 Certification Exam then career opportunities are open for you.

Our 350-029 Questions & Answers provide you an easy solution to your Cisco 350-029 Exam Preparation. Our 350-029 Q&As contains the most updated Cisco 350-029 real tests. You can use our 350-029 Q&As on any PC with most versions of Acrobat Reader and prepare the exam easily.

**Question: 1**

What protocol is used for Path Setup in MPLS traffic engineering?

- A. OSPF
- B. ISIS
- C. BGP
- D. RSVP
- E. PIM

**Answer: D**

**Question: 2**

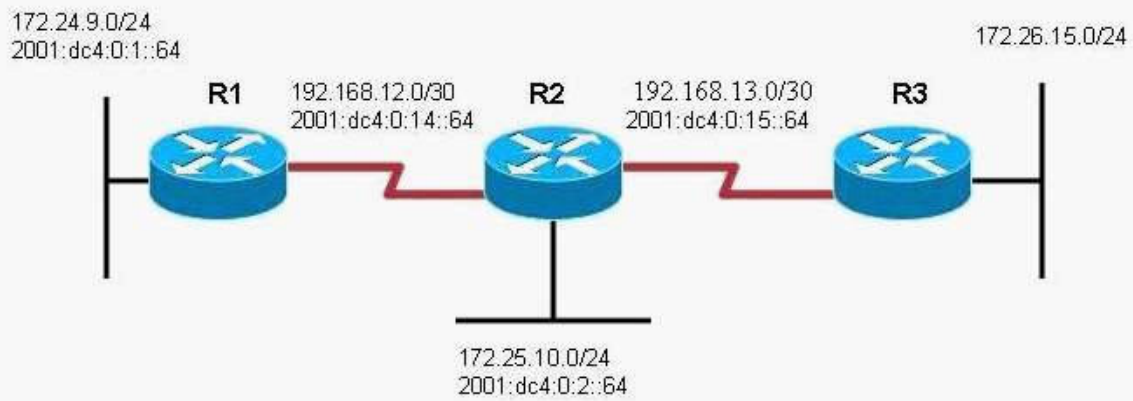
Which of the following is a correct arrangement of APS Action Requests in order of priority, with highest priority first?

- A. Lockout of Protection, Manual Switch, SD, Forced Switch
- B. Manual Switch, Lockout of Protection, Forced Switch, SD
- C. Lockout of Protection, Forced Switch, SD, Manual Switch
- D. Manual Switch, Forced Switch, Lockout of Protection, SD
- E. SD, Lockout of Protection, Forced Switch, Manual Switch
- F. None of the above

**Answer: C**

**Question: 3**

Refer to the exhibit.



Your customer has enabled IPv6 and IPv4 on routers R1 and R2, both running ISIS routing protocol, and they can no longer reach R3 network 172.26.15.0/24 (R3 does not enable IPv6, enables IPv4 only).

Which two steps should be taken to restore reachability to PS? (Choose Two.)

- A. Enable wide metrics.
- B. Enable OSPFv3 to support IPv4 and IPv6 simultaneously.
- C. Configure static routes to all unreachable networks and redistribute to IS-IS.
- D. Transition to IS-IS Multiple Topology Mode on R1 and R2.
- E. Transition to IS-IS Multiple Topology Mode on R3.
- F. Create an IPv6 tunnel from R2 to R3.

**Answer: A, D**

**Question: 4**

What is periodically multicasted (every 10 seconds) by the DIS on a LAN to ensure IS-IS Link State Database accuracy?

- A. PSNP
- B. CSNP
- C. LSP
- D. IIH
- E. ISH

**Answer: B**

**Question: 5**

What best explains the BGP route-reflector function?

- A. BGP route-reflector should be in forwarding path of data coming from its clients.
- B. BGP route-reflector does not have to be in the forwarding path & data coming from its clients.
- C. BGP route-reflector will stop reflecting the routes if they're not directly-connected clients.
- D. None of the above.

**Answer: B**

**Question: 6**

Which 4 statements regarding MPLS Label Stack Encoding is true?

- A. A value of 4 represents the "Implicit NULL Label."  
A value of 0 represents the "IPv4 Explicit NULL Label."
- C. A value of 1 represents the "Router Alert Label". The use of this label is analogous to the use of the "Router Alert Option" in IP packets (for example, ping with record route option).
- D. A value of 2 represents the "IPv6 Explicit NULL Label"
- E. A value of 1 represents the "IPv1 Explicit NULL Label"
- F. A value of 3 represents the "Implicit NULL Label"

**Answer: B, C, D, F**

**Question: 7**

When should traffic shaping be implemented on Frame Relay PVC s? (Choose two)

- A. When you want to drop excess traffic above the CIR
- B. When there is a speed mismatch between the central site and the remote site.
- C. When using Frame Relay SVCs
- D. When over-subscribing the central site link
- E. When LLQ is implemented on the Frame Relay PVC.
- F. When Multilink PPP LFI is implemented on the Frame Relay PVC.

**Answer: B, D**

**Question: 8**

There is MPLS VPN traffic traversing through a TE intermediate router. What is the MPLS packet label stack sequence (from outer to inner) for the VPN traffic on this router?

- A. TE label, IGP label, VPN label
- B. IGP label, TE label, VPN label
- C. TE label, VPN label, IGP label
- D. VPN label, IGP label, TE label

E. IGP label, VPN label, TE label

**Answer: A**

**Question: 9**

MPLS label headers for packet media consist of:

- A. Version
- B. Label
- C. COS/EXP
- D. TTL
- E. S flag

**Answer: B, C, D, E**

**Question: 10**

Which are correct descriptions and configurations of Any cast RP?

- A. In Any cast RP. two or more RPs are configured with the same IP address on loopback interfaces.
- B. Any cast RP provides redundancy and load-sharing capabilities.
- C. Routers with Any cast RP can be configured statically (loopback 1.1.1.1)with the command ip pim rp-address 1.1 .1.1
- D. Routers with Any cast RP can be configured statically (loopback 1.1.1.1)with the command ip rp-address pim 1.1.1.1
- E. Routers with Any cast RP can be configured statically (loopback 1.1.1.1)with the command ip any-cast-rp pim 1.1.1.1

**Answer: A, B, C**

**Question: 11**

In which of the following BGP-related events is an End-of-RIB (EOR) message sent?

- A. Just before sending a CEASE message to tear down the session.
- B. Following a link flap in the BGP speaker's AS.
- C. Following a Route Processor Switchover.
- D. During initial convergence.
- E. During capability negotiation.

**Answer: C, D**

**Question: 12**

In the diagram, R1 is the head-end of a TE tunnel that terminates on R5. The red line indicates the protected link, and the gold line indicates the backup tunnel. Which router is the Point of Local Repair?

SAMPLE EXAM



### Pass4sure \$89 Lifetime Membership Features;

- Pass4sure \$89 Lifetime Membership includes Over **2100** Exams in One Price.
- **All** Pass4sure **Questions and Answers** are included in \$89 package.
- **All** Pass4sure audio exams are included **free** in \$89 package (See List).
- **All** Pass4sure study guides are included **free** in \$89 package (See List).
- **Lifetime** login access, no hidden fee, no login expiry.
- **Free updates** for Lifetime.
- **Free Download Access** to All new exams added in future.
- Accurate answers with **explanations** (If applicable).
- **Verified answers** researched by industry experts.
- Study Material **updated** on regular basis.
- Questions, Answers and Study Guides are downloadable in **PDF** format.
- Audio Exams are downloadable in **MP3** format.
- **No authorization** code required to open exam.
- **Portable** anywhere.
- 100% success **Guarantee**.
- **Fast**, helpful support **24x7**.



View list of All exams (Q&A) provided in \$89 membership;  
<http://www.ipass4sure.com/allexams.asp>

View list of All Study Guides (SG) provided FREE for members;  
<http://www.ipass4sure.com/study-guides.asp>

View list of All Audio Exams (AE) provided FREE for members;  
<http://www.ipass4sure.com/audio-exams.asp>

Download All Exams Sample QAs.  
<http://www.ipass4sure.com/samples.asp>

To purchase \$89 Lifetime Full Access Membership click here (One time fee)  
<https://www.regnow.com/softsell/nph-softsell.cgi?item=30820-3>

3COM	CompTIA	Filemaker	IBM	LPI	OMG	Sun
ADOBE	ComputerAssociates	Fortinet	IISFA	McAfee	Oracle	Sybase
APC	CWNP	Foundry	Intel	McData	PMI	Symantec
Apple	DELL	Fujitsu	ISACA	Microsoft	Polycom	TeraData
BEA	ECCouncil	GuidanceSoftware	ISC2	Mile2	RedHat	TIA
BICSI	EMC	HDI	ISEB	NetworkAppliance	Sair	Tibco
CheckPoint	Enterasys	Hitachi	ISM	Network-General	SASInstitute	TruSecure
Cisco	ExamExpress	HP	Juniper	Nokia	SCP	Veritas
Citrix	Exin	Huawei	Legato	Nortel	See-Beyond	Vmware
CIW	ExtremeNetworks	Hyperion	Lotus	Novell	SNIA	

and many others.. See complete list Here

