



350-020

Cisco

CCIE SP Optical Qualification

Thousands of IT Professionals before you have already passed their 350-020 certification exams using the Cisco 350-020 Practice Exam from ipass4sure.com. Once you start using our 350-020 exam questions you simply can't stop! You are guaranteed to pass your Cisco 350-020 test with ease and in your first attempt.

Here's what you can expect from the [ipass4sure](http://ipass4sure.com) Cisco 350-020 course:

- * Up-to-Date Cisco 350-020 questions designed to familiarize you with the real exam.
- * 100% correct Cisco 350-020 answers you simply can't find in other 350-020 courses.
- * All of our tests are easy to download. Your file will be saved as a 350-020 PDF.
- * Cisco 350-020 brain dump free content featuring the real 350-020 test questions.

Cisco 350-020 Certification Exam is of core importance both in your Professional life and Cisco Certification Path. With Cisco Certification you can get a good job easily in the market and get on your path for success. Professionals who passed Cisco 350-020 Certification Exam are an absolute favorite in the industry. If you pass Cisco 350-020 Certification Exam then career opportunities are open for you.

Our 350-020 Questions & Answers provide you an easy solution to your Cisco 350-020 Exam Preparation. Our 350-020 Q&As contains the most updated Cisco 350-020 real tests. You can use our 350-020 Q&As on any PC with most versions of Acrobat Reader and prepare the exam easily.

| | | | |
|-------------------|--------------------------------------|-------------------------|----------------|
| Exam Name: | CCIE SP Optical Qualification | | |
| Exam Type | Cisco | Exam Code: | 350-020 |
| Doc. Type: | Q & A with Explanations | Total Questions: | 400 |

Question: 1

What IE is not mandatory in a Q.931 Service msg?

- A. Bearer capability
- B. Channel ID
- C. Message Type
- D. Change Status
- E. Call Reference

Answer : A

Question: 2

The purpose of Administrative Distance, as used by Cisco routers, is:

- A. To choose between routes from different routing protocols when receiving updates for the same network
- B. To identify which routing protocol forwarded the update
- C. To define the distance to the destination used in deciding the best path
- D. To be used only for administrative purposes

Answer : A

Question: 3

What is the maximum PMD value of a 100km fiber segment if the cable is specified with 0.5ps/km ? (worst case)?

- A. 0.005ps
- B. .05ps
- C. 5ps
- D. 50ps
- E. 500ps

Answer : C

Question: 4

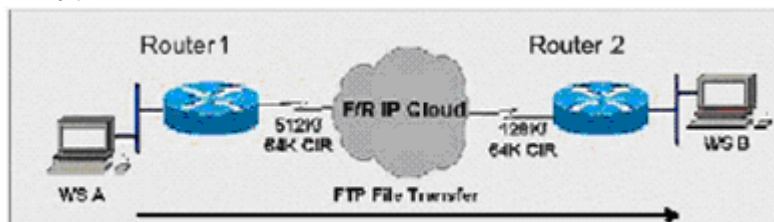
What is the equivalent of 50 GHz spacing in DWDM in terms of nm?

- A. 1.6 nm
- B. 0.8 nm
- C. 0.4 nm
- D. 0.2 nm

Answer: C

Question: 5

Exhibit:



| | | | |
|------------|-------------------------------|------------------|---------|
| Exam Name: | CCIE SP Optical Qualification | | |
| Exam Type | Cisco | Exam Code: | 350-020 |
| Doc. Type: | Q & A with Explanations | Total Questions: | 400 |

Router ES1 has a 512K-access port into the frame relay cloud. Router ES2 has 128K-access port into the frame relay cloud. The two routers are connected with symmetrical PVCs that are configured for 64K committed information rate (CIR). What Frame Relay Traffic Shaping map-class sub-command should be entered on Router A to prevent workstation A from overrunning the access port on Router B?

Image: 020-a-5-1.jpg

- A. frame-relay traffic-rate 128000 512000
- B. frame-relay traffic-rate 64000 512000
- C. frame-relay traffic-rate 512000 64000
- D. frame-relay traffic-rate 128000 64000
- E. frame-relay traffic-rate 64000 128000

Answer: E

Question: 6

If a host sends a TCP segment with the RST flag set, it means:

- A. The receiver should send all data in the reassembly buffer to the application receiving it immediately.
- B. The receiver should reset the session.
- C. Any routers between the source and destination hosts should reset the state of the connection in their buffers.
- D. The receiver should make certain its send buffer is pushed onto the wire.

Answer : B

Question: 7

How many E1 channels can STM-1 frame transport?

- A. 7
- B. 21
- C. 63
- D. 84

Answer: C

Question: 8

BGP can implement a policy of 'Route Dampening' to control route instability. What statement about route dampening is NOT correct?

- A. A numeric penalty is applied to a route each time it flaps.
- B. The penalty is exponentially decayed according to parameters, such as half-life-time.
- C. The history of unstable routes is forwarded back to the sender to control future updates.
- D. The route is eventually suppressed based on a configurable 'suppress limit'.

Answer : C

Question: 9

MPLS traffic engineering data is carried by:

- A. Opaque LSAs or IS-IS TLVs
- B. BGP MEDs
- C. RTP or RTCP packets

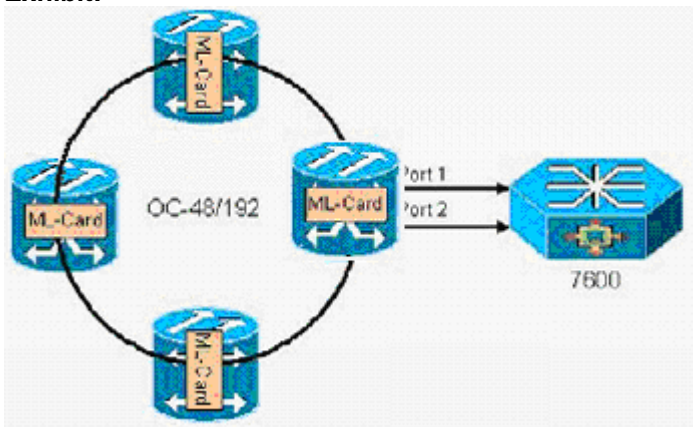
| | | | |
|------------|-------------------------------|------------------|---------|
| Exam Name: | CCIE SP Optical Qualification | | |
| Exam Type | Cisco | Exam Code: | 350-020 |
| Doc. Type: | Q & A with Explanations | Total Questions: | 400 |

D. MBGP

Answer: A

Question: 10

Exhibit:



In the diagram, if a resilient packet ring (RPR) is built between ML-series cards, ____ restoration exists on the ring, while the redundant connections to the 7609 rely on ____ protection.
Image: 020-a-10-1.jpg

- A. 50 ms, STP
- B. STP, STP
- C. STP, 1+1 APS
- D. 50ms, 50ms

Answer: A

Question: 11

How many E-1s can be aggregated (maximum) and mapped into a VC-12 Signal?

- A. 1
- B. 7
- C. 14
- D. 28
- E. 32

Answer: A

Question: 12

What is Fast EtherChannel?

- A. A feature to bundle multiple Ethernet point-to-point links quickly into one logical high speed link
- B. A feature to bundle multiple Fast-Ethernet point-to-point links into one logical high speed link
- C. Another name for full-duplex Fast Ethernet
- D. Another name for Gigabit Ethernet
- E. None of the above

Answer: B

Question: 13

Exhibit:

SAMPLE EXAM



Pass4sure \$89 Lifetime Membership Features;

- Pass4sure \$89 Lifetime Membership includes Over **2100** Exams in One Price.
- **All** Pass4sure **Questions and Answers** are included in \$89 package.
- **All** Pass4sure audio exams are included **free** in \$89 package (See List).
- **All** Pass4sure study guides are included **free** in \$89 package (See List).
- **Lifetime** login access, no hidden fee, no login expiry.
- **Free updates** for Lifetime.
- **Free Download Access** to All new exams added in future.
- Accurate answers with **explanations** (If applicable).
- **Verified answers** researched by industry experts.
- Study Material **updated** on regular basis.
- Questions, Answers and Study Guides are downloadable in **PDF** format.
- Audio Exams are downloadable in **MP3** format.
- **No authorization** code required to open exam.
- **Portable** anywhere.
- 100% success **Guarantee**.
- **Fast**, helpful support **24x7**.



View list of All exams (Q&A) provided in \$89 membership;
<http://www.ipass4sure.com/allexams.asp>

View list of All Study Guides (SG) provided FREE for members;
<http://www.ipass4sure.com/study-guides.asp>

View list of All Audio Exams (AE) provided FREE for members;
<http://www.ipass4sure.com/audio-exams.asp>

Download All Exams Sample QAs.
<http://www.ipass4sure.com/samples.asp>

To purchase \$89 Lifetime Full Access Membership click here (One time fee)
<https://www.regnow.com/softsell/nph-softsell.cgi?item=30820-3>

| | | | | | | |
|------------|--------------------|------------------|---------|------------------|--------------|-----------|
| 3COM | CompTIA | Filemaker | IBM | LPI | OMG | Sun |
| ADOBE | ComputerAssociates | Fortinet | IISFA | McAfee | Oracle | Sybase |
| APC | CWNP | Foundry | Intel | McData | PMI | Symantec |
| Apple | DELL | Fujitsu | ISACA | Microsoft | Polycom | TeraData |
| BEA | ECCouncil | GuidanceSoftware | ISC2 | Mile2 | RedHat | TIA |
| BICSI | EMC | HDI | ISEB | NetworkAppliance | Sair | Tibco |
| CheckPoint | Enterasys | Hitachi | ISM | Network-General | SASInstitute | TruSecure |
| Cisco | ExamExpress | HP | Juniper | Nokia | SCP | Veritas |
| Citrix | Exin | Huawei | Legato | Nortel | See-Beyond | Vmware |
| CIW | ExtremeNetworks | Hyperion | Lotus | Novell | SNIA | |

and many others.. See complete list Here

