



# 350-026

**Cisco**

*CCIE SP Content Networking ENU*

Thousands of IT Professionals before you have already passed their 350-026 certification exams using the Cisco 350-026 Practice Exam from [ipass4sure.com](http://ipass4sure.com). Once you start using our 350-026 exam questions you simply can't stop! You are guaranteed to pass your Cisco 350-026 test with ease and in your first attempt.

Here's what you can expect from the [ipass4sure](http://ipass4sure.com) Cisco 350-026 course:

- \* Up-to-Date Cisco 350-026 questions designed to familiarize you with the real exam.
- \* 100% correct Cisco 350-026 answers you simply can't find in other 350-026 courses.
- \* All of our tests are easy to download. Your file will be saved as a 350-026 PDF.
- \* Cisco 350-026 brain dump free content featuring the real 350-026 test questions.

Cisco 350-026 Certification Exam is of core importance both in your Professional life and Cisco Certification Path. With Cisco Certification you can get a good job easily in the market and get on your path for success. Professionals who passed Cisco 350-026 Certification Exam are an absolute favorite in the industry. If you pass Cisco 350-026 Certification Exam then career opportunities are open for you.

Our 350-026 Questions & Answers provide you an easy solution to your Cisco 350-026 Exam Preparation. Our 350-026 Q&As contains the most updated Cisco 350-026 real tests. You can use our 350-026 Q&As on any PC with most versions of Acrobat Reader and prepare the exam easily.

**QUESTION: 1**

In Frame Relay, what devices resend packets that do not transmit correctly?

- A. Digital transmission media cabled to monitor ports, as opposed to straight DCE signaling
- B. Network switches running SNMP management software
- C. Special bridging devices within the backbone cloud
- D. Network end stations

**Answer: D**

**QUESTION: 2**

What is the proper format for the inverse DNS mapping for the following address: 198.133.219.25?

- A. 198.133.219.25.in-addr.arpa.
- B. 198.133.25.219.in-addr.arpa.
- C. 0.219.133.198.in-addr.arpa.
- D. 25.219.133.198.in-addr.arpa.
- E. 198.133.219.0.in-addr.arpa.

**Answer: D**

**QUESTION: 3**

A new Cisco router has no configuration defined. Which methods can be used to configure the router for the first time? (multiple answer)

- A. Connecting a terminal to the console port, defining a minimal configuration, connecting the router to the network, and using TFTP to download a configuration file that has been created ahead of time
- B. Connecting a terminal to the console port and directly typing in configuration commands
- C. Connecting a terminal to the console port and running the Setup dialogue
- D. Using BOOTP/SLARP/RARP to download a configuration file that has been created ahead of time
- E. Using SNMP via a network management station

**Answer: A,B,C,D**

**QUESTION: 4**

What does CSG do to traffic that does not match a content rule?

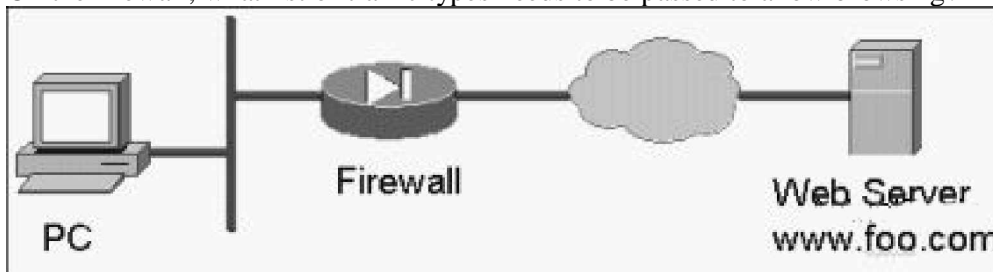
- A. Forwards, always
- B. Drops, always

- C. None of the above
- D. Forwards, when CSG is used in routed mode, drops otherwise
- E. Forwards, when CSG is used in bridged mode, drops otherwise

**Answer:** E

**QUESTION: 5**

Click the Exhibit button. A client at the PC is unable to browse to <http://www.foo.com>. On the firewall, what list of traffic types needs to be passed to allow browsing?



- A. tcp 25, ssl, dns
- B. icmp, udp 1645, tcp 8080
- C. ftp,smtp, dns
- D. icmp, tcp 49, tcp 443
- E. udp 53, tcp 80, ftp

**Answer:** E

**QUESTION: 6**

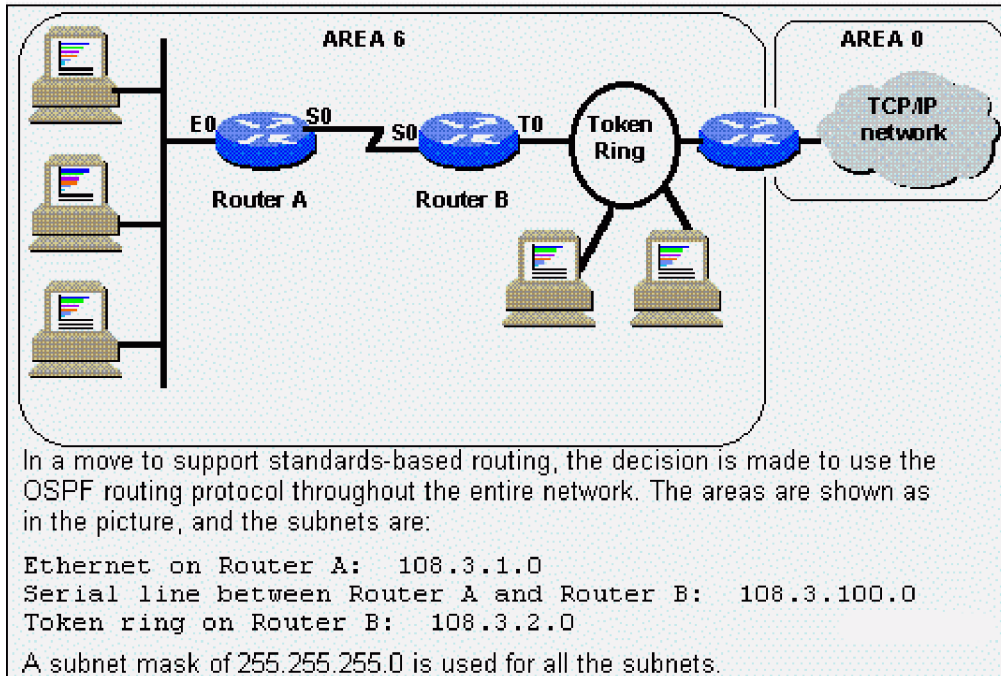
Select the group of technologies which are listed in descending order of bandwidth scale:

- A. DWDM, SDH, Frame Relay
- B. DWDM, SDH, ATM
- C. ATM, DWDM, Frame Relay
- D. SDH, X.25, ATM

**Answer:** B

**QUESTION: 7**

Click the Exhibit button to view the scenario.How should OSPF be configured on Router B?



- A. routerospf 1  
network 108.3.100.0 0.0.0.255 area 6  
network 108.3.2.0 0.0.0.255 area 6
- B. routerospf 1  
network 108.3.100.0 255.255.255.0 area 6  
network 108.3.2.0 255.255.255.0 area 6
- C. routerospf network 108.3.0.0
- D. routerospf 1  
network 108.3.1.0 0.0.0.255 area 6  
network 108.3.100.0 0.0.0.255 area 6  
network 108.3.2.0 0.0.0.255 area 6
- E. routerospf 1  
network 108.3.100.0 0.0.0.255 area 6  
network 108.3.2.0 0.0.0.255 area 0

**Answer:** A

**QUESTION:** 8

An HTTP response code of 404 indicates:

- A. Bad request.
- B. Unauthorized.
- C. Object moved.
- D. The transaction is successful.
- E. Not found.

**Answer:** E

**QUESTION:** 9

How is Equal Cost Multipath Protocol configured on the CSS?

- A. ECMP command in a content rule
- B. VLAN1 IP ECMP command
- C. Global IP ECMP command
- D. ECMP command in the router service
- E. VLAN1 enable ECMP command

**Answer:** C

**QUESTION:** 10

In ACNS 5.X Content Delivery Network what is the purpose of defining a root Content Engine for a channel?

- A. None of the above
- B. This Content Engine downloads the content from the origin server and distributes the content to all the Content Engines that belong to the Channel.
- C. This Content Engine retrieves content from other Content Engines within the CDN.
- D. This Content Engine downloads the content from the Content Distribution Manager and distributes the content to all the Content Engines that belong to the Channel.
- E. This Content Engine is used by the administrator to manage the Content Delivery Network.

**Answer:** B

**QUESTION:** 11

To configure a CSS in box-to-box redundancy, the circuit VLAN that runs VRRP must have what command configured?

- A. redundancy-protocol
- B. circuit-redundant
- C. interface-redundant
- D. redundant-circuit
- E. redundancy-interface

**Answer:** A

**QUESTION: 12**

The configuration register does NOT retain settings for:

- A. An enabled 'Break' key
- B. The console baud rate
- C. An enabled AUX port
- D. The boot method

**Answer: C**

**QUESTION: 13**

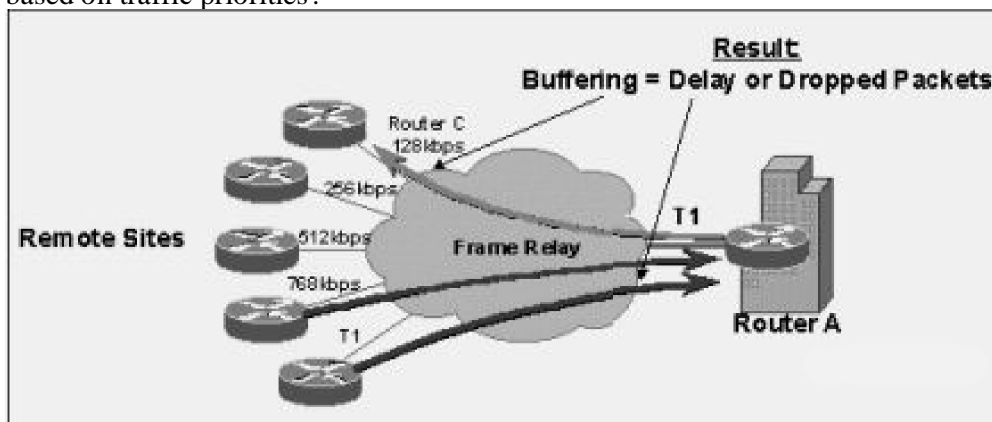
What is a possible way to avoid assymmetric traffic flow when using the CSM for server load balancing and the CSM's server side VLAN has an IP address configured on the MSFC?

- A. In the server farm use the clientnat command with a nat pool.
- B. Set the server's default gateway to the CSM's client side IP address.
- C. Use policy based routing to force traffic through the CSM's server side VLAN.
- D. Use policy based routing to force traffic through the CSM's client side VLAN.

**Answer: A,C**

**QUESTION: 14**

Click the Exhibit button to view the configuration. In the diagram shown, what mechanism needs to be employed on the remote site routers to aid congestion avoidance in the core, based on traffic priorities?



- A. Class Based Weighted Fair Queuing
- B. Weighted Random Early Detection
- C. IP Precedence Tagging
- D. Random Early Detection

SAMPLE EXAM



### Pass4sure \$89 Lifetime Membership Features;

- Pass4sure \$89 Lifetime Membership includes Over **2100** Exams in One Price.
- **All** Pass4sure **Questions and Answers** are included in \$89 package.
- **All** Pass4sure audio exams are included **free** in \$89 package (See List).
- **All** Pass4sure study guides are included **free** in \$89 package (See List).
- **Lifetime** login access, no hidden fee, no login expiry.
- **Free updates** for Lifetime.
- **Free Download Access** to All new exams added in future.
- Accurate answers with **explanations** (If applicable).
- **Verified answers** researched by industry experts.
- Study Material **updated** on regular basis.
- Questions, Answers and Study Guides are downloadable in **PDF** format.
- Audio Exams are downloadable in **MP3** format.
- **No authorization** code required to open exam.
- **Portable** anywhere.
- 100% success **Guarantee**.
- **Fast**, helpful support **24x7**.



View list of All exams (Q&A) provided in \$89 membership;  
<http://www.ipass4sure.com/allexams.asp>

View list of All Study Guides (SG) provided FREE for members;  
<http://www.ipass4sure.com/study-guides.asp>

View list of All Audio Exams (AE) provided FREE for members;  
<http://www.ipass4sure.com/audio-exams.asp>

Download All Exams Sample QAs.  
<http://www.ipass4sure.com/samples.asp>

To purchase \$89 Lifetime Full Access Membership click here (One time fee)  
<https://www.regnow.com/softsell/nph-softsell.cgi?item=30820-3>

3COM	CompTIA	Filemaker	IBM	LPI	OMG	Sun
ADOBE	ComputerAssociates	Fortinet	IISFA	McAfee	Oracle	Sybase
APC	CWNP	Foundry	Intel	McData	PMI	Symantec
Apple	DELL	Fujitsu	ISACA	Microsoft	Polycom	TeraData
BEA	ECCouncil	GuidanceSoftware	ISC2	Mile2	RedHat	TIA
BICSI	EMC	HDI	ISEB	NetworkAppliance	Sair	Tibco
CheckPoint	Enterasys	Hitachi	ISM	Network-General	SASInstitute	TruSecure
Cisco	ExamExpress	HP	Juniper	Nokia	SCP	Veritas
Citrix	Exin	Huawei	Legato	Nortel	See-Beyond	Vmware
CIW	ExtremeNetworks	Hyperion	Lotus	Novell	SNIA	

and many others.. See complete list Here

