



132-S-916.2

Avaya

Avaya Specialist - IP Office Implement & Support Elective Exam

Thousands of IT Professionals before you have already passed their 132-S-916.2 certification exams using the Avaya 132-S-916.2 Practice Exam from ipass4sure.com. Once you start using our 132-S-916.2 exam questions you simply can't stop! You are guaranteed to pass your Avaya 132-S-916.2 test with ease and in your first attempt.

Here's what you can expect from the [ipass4sure](http://ipass4sure.com) Avaya 132-S-916.2 course:

- * Up-to-Date Avaya 132-S-916.2 questions designed to familiarize you with the real exam.
- * 100% correct Avaya 132-S-916.2 answers you simply can't find in other 132-S-916.2 courses.
- * All of our tests are easy to download. Your file will be saved as a 132-S-916.2 PDF.
- * Avaya 132-S-916.2 brain dump free content featuring the real 132-S-916.2 test questions.

Avaya 132-S-916.2 Certification Exam is of core importance both in your Professional life and Avaya Certification Path. With Avaya Certification you can get a good job easily in the market and get on your path for success. Professionals who passed Avaya 132-S-916.2 Certification Exam are an absolute favorite in the industry. If you pass Avaya 132-S-916.2 Certification Exam then career opportunities are open for you.

Our 132-S-916.2 Questions & Answers provide you an easy solution to your Avaya 132-S-916.2 Exam Preparation. Our 132-S-916.2 Q&As contains the most updated Avaya 132-S-916.2 real tests. You can use our 132-S-916.2 Q&As on any PC with most versions of Acrobat Reader and prepare the exam easily.

Question: 1

Which three options does the IMS user have available in Microsoft?Outlook? (Choose three.)

- A. Select IMS server.
- B. Select Voicemail Box.
- C. Select Voicemail server.
- D. Select handset for VM playback.
- E. Prompt before connecting to server.

Answer: B, D, E

Question: 2

An IP Office telephone user reports that a phone is not ringing for outside calls. What are three possible reasons why this is happening? (Choose three.)

- A. The IP Office locale is set to "A-Law".
- B. The phone does not have the user profile logged onto the phone.
- C. The ring volume is too low to hear.
- D. The phone has been set to "Offhook Station".
- E. The phone is set to "Do Not Disturb".

Answer: B, C, E

Question: 3

When configuring Session Initiated Protocol (SIP) trunks with SIP authorization using an IP address on an IP Office system which option must be set in the SIP Line configuration form for the trunks to function correctly?

- A. The customer's NAT IP address must be entered on the SIP line form.
- B. The Primary Authentication Name must be set.
- C. The compression mode must be set to automatic.
- D. The ITSP IP address must be entered on the SIP line form.

Answer: D

Question: 4

When installing IP Hardphones, the engineer wants to use the IEEE 802.3af standard to _____.

- A. Supply AC voltage to the IP Office
- B. Supply power to the IP Hardphones
- C. Perform Layer 3 routing for IP Hardphones
- D. Filter multicast traffic to the appropriate IP Hardphone

Answer: B

Question: 5

Recordings take up how much space on a hard drive?

- A. 2MB per minute
- B. 200KB per minute
- C. 1MB per minute
- D. 650KB per minute

Answer: C

Question: 6

Which three pieces of information does System Status Application provide? (Choose three.)

- A. Configuration errors
- B. Local IP Office license status
- C. Trunk status
- D. Extension status
- E. Remote IP Office license statu

Answer: B, C, D

Question: 7

A customer wants to have a simple conference bridge with four permanent bridges set up off of a menu in VoiceMail Pro. The customer also wants each bridge protected with a different static PIN. Where in the setup of this scenario would you enter the PIN?

- A. On the General tab in the menu action
- B. On the General tab for each transfer action
- C. On the Telephone Number field in the IP Office Short Code
- D. In the Properties box for each option in the Touch Tone tab in the menu action

Answer: B

Question: 8

Which Dynamic Host Configuration Protocol (DHCP) options are available in the IP Office?

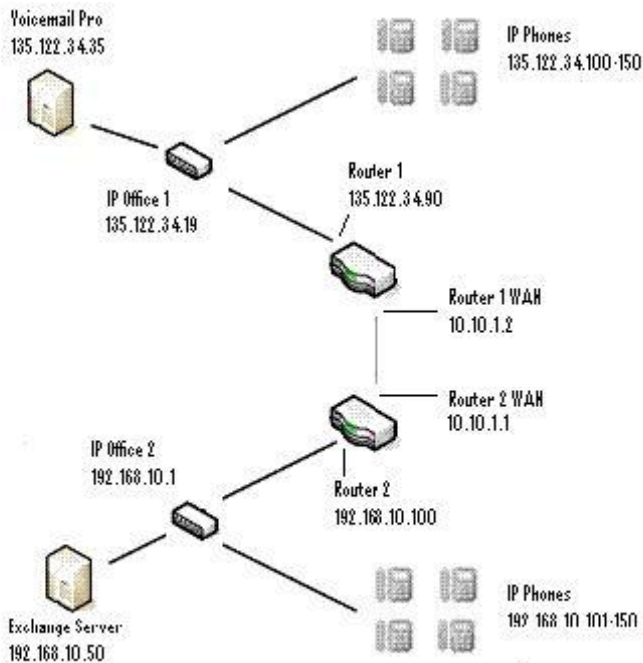
- A. Disabled, Enabled
- B. Server, Enabled, Client
- C. Server, Disabled, Client, DialIn
- D. Server, Client, Disabled

Answer: C

Question: 9

Click the Exhibit button.

In the exhibit, what would the default gateway for IP Office 1 be?



- A. 10.10.1.1
- B. 10.10.1.2
- C. 192.168.10.100
- D. 135.122.34.90

Answer: D

Question: 10

Which file validates the version of software that is to be loaded into the 4600 Series Telephone set?

- A. bbla0_83.scr
- B. 46xxsettings.txt
- C. 46xxsettings.scr
- D. 46xxupgrade.scr

Answer: D

Question: 11

What is necessary to upgrade the firmware for the 4600/5600 series sets on an IP Office system?

- A. Manager
- B. Serial cable
- C. Third-party FTP server
- D. Null modem cable

Answer: A

Question: 12

Which two operating systems are supported by VoiceMail Pro? (Choose two.)

SAMPLE EXAM



Pass4sure \$89 Lifetime Membership Features;

- Pass4sure \$89 Lifetime Membership includes Over **2100** Exams in One Price.
- **All** Pass4sure **Questions and Answers** are included in \$89 package.
- **All** Pass4sure audio exams are included **free** in \$89 package (See List).
- **All** Pass4sure study guides are included **free** in \$89 package (See List).
- **Lifetime** login access, no hidden fee, no login expiry.
- **Free updates** for Lifetime.
- **Free Download Access** to All new exams added in future.
- Accurate answers with **explanations** (If applicable).
- **Verified answers** researched by industry experts.
- Study Material **updated** on regular basis.
- Questions, Answers and Study Guides are downloadable in **PDF** format.
- Audio Exams are downloadable in **MP3** format.
- **No authorization** code required to open exam.
- **Portable** anywhere.
- 100% success **Guarantee**.
- **Fast**, helpful support **24x7**.



View list of All exams (Q&A) provided in \$89 membership;
<http://www.ipass4sure.com/allexams.asp>

View list of All Study Guides (SG) provided FREE for members;
<http://www.ipass4sure.com/study-guides.asp>

View list of All Audio Exams (AE) provided FREE for members;
<http://www.ipass4sure.com/audio-exams.asp>

Download All Exams Sample QAs.
<http://www.ipass4sure.com/samples.asp>

To purchase \$89 Lifetime Full Access Membership click here (One time fee)
<https://www.regnow.com/softsell/nph-softsell.cgi?item=30820-3>

3COM	CompTIA	Filemaker	IBM	LPI	OMG	Sun
ADOBE	ComputerAssociates	Fortinet	IISFA	McAfee	Oracle	Sybase
APC	CWNP	Foundry	Intel	McData	PMI	Symantec
Apple	DELL	Fujitsu	ISACA	Microsoft	Polycom	TeraData
BEA	ECCouncil	GuidanceSoftware	ISC2	Mile2	RedHat	TIA
BICSI	EMC	HDI	ISEB	NetworkAppliance	Sair	Tibco
CheckPoint	Enterasys	Hitachi	ISM	Network-General	SASInstitute	TruSecure
Cisco	ExamExpress	HP	Juniper	Nokia	SCP	Veritas
Citrix	Exin	Huawei	Legato	Nortel	See-Beyond	Vmware
CIW	ExtremeNetworks	Hyperion	Lotus	Novell	SNIA	

and many others.. See complete list Here

