



4A0-105

Alcatel-Lucent

Alcatel-Lucent Virtual Private LAN Services

Thousands of IT Professionals before you have already passed their 4A0-105 certification exams using the Alcatel-Lucent 4A0-105 Practice Exam from ipass4sure.com. Once you start using our 4A0-105 exam questions you simply can't stop! You are guaranteed to pass your Alcatel-Lucent 4A0-105 test with ease and in your first attempt.

Here's what you can expect from the [ipass4sure](http://ipass4sure.com) Alcatel-Lucent 4A0-105 course:

- * Up-to-Date Alcatel-Lucent 4A0-105 questions designed to familiarize you with the real exam.
- * 100% correct Alcatel-Lucent 4A0-105 answers you simply can't find in other 4A0-105 courses.
- * All of our tests are easy to download. Your file will be saved as a 4A0-105 PDF.
- * Alcatel-Lucent 4A0-105 brain dump free content featuring the real 4A0-105 test questions.

Alcatel-Lucent 4A0-105 Certification Exam is of core importance both in your Professional life and Alcatel-Lucent Certification Path. With Alcatel-Lucent Certification you can get a good job easily in the market and get on your path for success. Professionals who passed Alcatel-Lucent 4A0-105 Certification Exam are an absolute favorite in the industry. If you pass Alcatel-Lucent 4A0-105 Certification Exam then career opportunities are open for you.

Our 4A0-105 Questions & Answers provide you an easy solution to your Alcatel-Lucent 4A0-105 Exam Preparation. Our 4A0-105 Q&As contains the most updated Alcatel-Lucent 4A0-105 real tests. You can use our 4A0-105 Q&As on any PC with most versions of Acrobat Reader and prepare the exam easily.

Question: 1

Which of the following best describes the difference between VPWS and VPLS?

- A. VPWS is a point-to-point service where CEs are presented with point-to-point virtual circuits whereas
- B. VPLS is a bridged LAN service provided to a set of CEs that are members of a L2 VPN
- C. Unlike VPLS, VPWS allows CEs that are member of the same service instance to communicate with each other as if they are connected via a bridged LAN
- D. Unlike VPWS, VPLS provides customers to view the network as an unshared overlay link or circuit

Answer: A

Question: 2

The behavior of VPLS can be best described by which of the following statements?

- A. A frame should be sent only to the PE that connects to the target site of the frame whenever possible
- B. A frame should be flooded as little as possible
- C. Customer frames should be switched based on the destination MAC address
- D. Only (a) and (b) are true
- E. All of the above

Answer: E

Question: 3

Which of the following statements relating to VPLS are false?

- A. A VPLS is a multipoint Layer 2 service
- B. A VPLS allows multiple customer sites to be connected in a single bridged domain
- C. A VPLS on a single node requires a Service Distribution Path
- D. With VPLS Service provider can reuse their IP/MPLS infrastructure to offer multiple services
- E. The VPLS switches traffic based on MAC address associated to the appropriate SAP

Answer: C

Question: 4

True or False? Multiple VPLS services can be offered over the same set of LSP tunnels?

- A. True
- B. False

Answer: A

Question: 5

Which of the following contributes to VPLS implementation over MPLS?

- A. Connecting bridging-capable provider edge routers with a full mesh of MPLS LSP (label switched path) tunnels
- B. Negotiating per-service VC labels using draft-Martini encapsulation
- C. Replicating unknown and broadcast traffic in a service domain
- D. Enabling MAC learning over tunnel and access ports
- E. Using a separate forwarding information base (FIB) per VPLS service
- F. All of the above

Answer: F

Question: 6

Which of the following statements is false?

- A. VPLS is a bridged LAN service
- B. VPLS provides L2 VPN services to CEs
- C. VPLS is a point-to-point service where CEs are presented with point-to-point virtual circuits
- D. CEs that are members of the same VPLS service instance communicate with each other as if they are connected via a bridged LAN

Answer: C

Question: 7

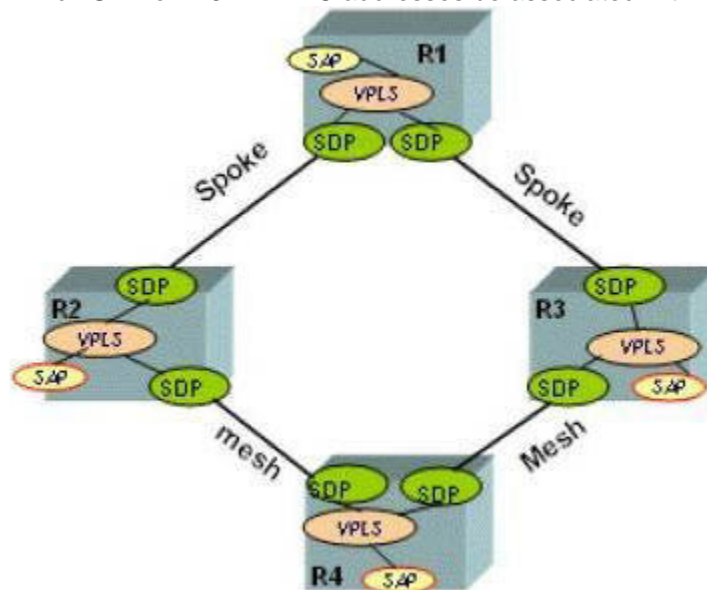
Which of the following functions must a PE router support when participating in a VPLS network? Choose all that apply.

- A. MAC learning
- B. Packet replication
- C. Proxy ARP
- D. Packet forwarding
- E. Flood all frames with an unknown destination MAC address to all PE routers associated with that VPLS

Answer: A, B, D, E

Question: 8

Which SDP on R3 will MAC addresses be associated with for devices behind R2?



- A. It depends if traffic is received via R4 or R1 from devices behind R2
- B. The devices cannot communicate based on the configuration in the diagram so there will be no mac address association
- C. Devices behind R2 will be associated with the sdp between R3 and R1
- D. Devices behind R2 will be associated with the sdp between R3 and R4

SAMPLE EXAM



Pass4sure \$89 Lifetime Membership Features;

- Pass4sure \$89 Lifetime Membership includes Over **2100** Exams in One Price.
- **All** Pass4sure **Questions and Answers** are included in \$89 package.
- **All** Pass4sure audio exams are included **free** in \$89 package (See List).
- **All** Pass4sure study guides are included **free** in \$89 package (See List).
- **Lifetime** login access, no hidden fee, no login expiry.
- **Free updates** for Lifetime.
- **Free Download Access** to All new exams added in future.
- Accurate answers with **explanations** (If applicable).
- **Verified answers** researched by industry experts.
- Study Material **updated** on regular basis.
- Questions, Answers and Study Guides are downloadable in **PDF** format.
- Audio Exams are downloadable in **MP3** format.
- **No authorization** code required to open exam.
- **Portable** anywhere.
- 100% success **Guarantee**.
- **Fast**, helpful support **24x7**.



View list of All exams (Q&A) provided in \$89 membership;
<http://www.ipass4sure.com/allexams.asp>

View list of All Study Guides (SG) provided FREE for members;
<http://www.ipass4sure.com/study-guides.asp>

View list of All Audio Exams (AE) provided FREE for members;
<http://www.ipass4sure.com/audio-exams.asp>

Download All Exams Sample QAs.
<http://www.ipass4sure.com/samples.asp>

To purchase \$89 Lifetime Full Access Membership click here (One time fee)
<https://www.regnow.com/softsell/nph-softsell.cgi?item=30820-3>

3COM	CompTIA	Filemaker	IBM	LPI	OMG	Sun
ADOBE	ComputerAssociates	Fortinet	IISFA	McAfee	Oracle	Sybase
APC	CWNP	Foundry	Intel	McData	PMI	Symantec
Apple	DELL	Fujitsu	ISACA	Microsoft	Polycom	TeraData
BEA	ECCouncil	GuidanceSoftware	ISC2	Mile2	RedHat	TIA
BICSI	EMC	HDI	ISEB	NetworkAppliance	Sair	Tibco
CheckPoint	Enterasys	Hitachi	ISM	Network-General	SASInstitute	TruSecure
Cisco	ExamExpress	HP	Juniper	Nokia	SCP	Veritas
Citrix	Exin	Huawei	Legato	Nortel	See-Beyond	Vmware
CIW	ExtremeNetworks	Hyperion	Lotus	Novell	SNIA	

and many others.. See complete list [Here](#)

