



4A0-110

Alcatel-Lucent

Alcatel-Lucent Advanced Troubleshooting

Thousands of IT Professionals before you have already passed their 4A0-110 certification exams using the Alcatel-Lucent 4A0-110 Practice Exam from ipass4sure.com. Once you start using our 4A0-110 exam questions you simply can't stop! You are guaranteed to pass your Alcatel-Lucent 4A0-110 test with ease and in your first attempt.

Here's what you can expect from the [ipass4sure](http://ipass4sure.com) Alcatel-Lucent 4A0-110 course:

- * Up-to-Date Alcatel-Lucent 4A0-110 questions designed to familiarize you with the real exam.
- * 100% correct Alcatel-Lucent 4A0-110 answers you simply can't find in other 4A0-110 courses.
- * All of our tests are easy to download. Your file will be saved as a 4A0-110 PDF.
- * Alcatel-Lucent 4A0-110 brain dump free content featuring the real 4A0-110 test questions.

Alcatel-Lucent 4A0-110 Certification Exam is of core importance both in your Professional life and Alcatel-Lucent Certification Path. With Alcatel-Lucent Certification you can get a good job easily in the market and get on your path for success. Professionals who passed Alcatel-Lucent 4A0-110 Certification Exam are an absolute favorite in the industry. If you pass Alcatel-Lucent 4A0-110 Certification Exam then career opportunities are open for you.

Our 4A0-110 Questions & Answers provide you an easy solution to your Alcatel-Lucent 4A0-110 Exam Preparation. Our 4A0-110 Q&As contains the most updated Alcatel-Lucent 4A0-110 real tests. You can use our 4A0-110 Q&As on any PC with most versions of Acrobat Reader and prepare the exam easily.

Question: 1

Two routers are physically connected to each other over Ethernet port 1/1/1.

Review the configuration information shown below. What state should the OSPF neighbor be in?

```
config> port 1/1/1
      no shutdown
      router interface toNode2
        address 10.1.5.1/24
        port 1/1/1
      router ospf
        area 0.0.0.0
          interface "toNode2"
            hello-interval 15
            dead-interval 40
```

Node 2

```
config> port 1/1/1
      no shutdown
      router interface toNode1
        address 10.1.5.2/24
        port 1/1/1
      router ospf
        area 0.0.0.0
          interface "toNode1"
```

- A. INIT
- B. EXCHANGE
- C. EXSTART
- D. FULL
- E. No OSPF neighbor

Answer: E

Question: 2

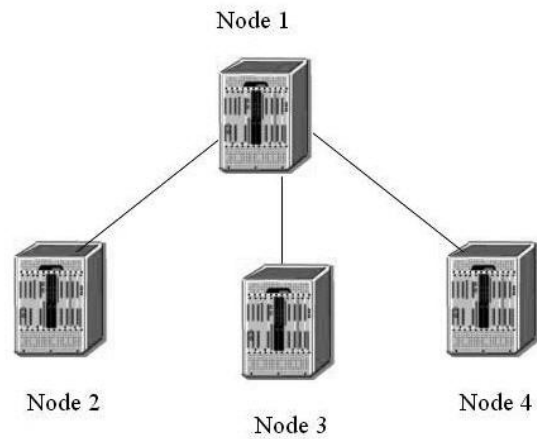
Which of the following debug statements can be used to troubleshoot if the OSPF adjacency is staying at xstart state? Select two answers.

- A. Debug router ospf rtm
- B. Debug router ospf packet dbdescr
- C. Debug router ospf neighbor
- D. Debug router ospf packet hello
- E. Debug router ospf spf

Answer: B, C

Question: 3

Based on the following configuration, which of the following statements are true? Choose all that apply.



Node-1

```

config>router>ospf#
  area 0.0.0.0
    interface "to-Node-2"
      metric 50
      authentication-key "DoGpEhE4333mNp52Iug6Z82" hash2
    interface "to-Node-3"
      metric 50
  area 0.0.0.1
    nssa
      originate-default-route
    interface "to-Node-4"
      metric 50
  
```

Node-2

```

config>router>ospf#
  area 0.0.0.0
    interface "to-Node-1"
      authentication-key "Sb77iS4bPCeH2&rm5iaFuHAXNbniAg82" hash2
  
```

Node-3

```

config>router>ospf#
  area 0.0.0.0
    interface "to-Node-1"
      hello-interval 15
  
```

Node-4

```

config>router>ospf#
  area 0.0.0.1
    interface "to-Node-1"
      metric 50
  
```

- A. No OSPF adjacency found on Node 1
- B. Full OSPF adjacency between Node-1 and Node-2
- C. Full OSPF adjacency between Node-1 and Node-3
- D. Full OSPF adjacency between Node-1 and Node-4
- E. OSPF is enabled on Node 1

Answer: B, E

Question: 4

Two routers are physically connected to each other over Ethernet port 1/1/1. Review the configuration information below. What state should the OSPF neighbor be in?

SAMPLE EXAM



Pass4sure \$89 Lifetime Membership Features;

- Pass4sure \$89 Lifetime Membership includes Over **2100** Exams in One Price.
- **All** Pass4sure **Questions and Answers** are included in \$89 package.
- **All** Pass4sure audio exams are included **free** in \$89 package (See List).
- **All** Pass4sure study guides are included **free** in \$89 package (See List).
- **Lifetime** login access, no hidden fee, no login expiry.
- **Free updates** for Lifetime.
- **Free Download Access** to All new exams added in future.
- Accurate answers with **explanations** (If applicable).
- **Verified answers** researched by industry experts.
- Study Material **updated** on regular basis.
- Questions, Answers and Study Guides are downloadable in **PDF** format.
- Audio Exams are downloadable in **MP3** format.
- **No authorization** code required to open exam.
- **Portable** anywhere.
- 100% success **Guarantee**.
- **Fast**, helpful support **24x7**.



View list of All exams (Q&A) provided in \$89 membership;
<http://www.ipass4sure.com/allexams.asp>

View list of All Study Guides (SG) provided FREE for members;
<http://www.ipass4sure.com/study-guides.asp>

View list of All Audio Exams (AE) provided FREE for members;
<http://www.ipass4sure.com/audio-exams.asp>

Download All Exams Sample QAs.
<http://www.ipass4sure.com/samples.asp>

To purchase \$89 Lifetime Full Access Membership click here (One time fee)
<https://www.regnow.com/softsell/nph-softsell.cgi?item=30820-3>

3COM	CompTIA	Filemaker	IBM	LPI	OMG	Sun
ADOBE	ComputerAssociates	Fortinet	IISFA	McAfee	Oracle	Sybase
APC	CWNP	Foundry	Intel	McData	PMI	Symantec
Apple	DELL	Fujitsu	ISACA	Microsoft	Polycom	TeraData
BEA	ECCouncil	GuidanceSoftware	ISC2	Mile2	RedHat	TIA
BICSI	EMC	HDI	ISEB	NetworkAppliance	Sair	Tibco
CheckPoint	Enterasys	Hitachi	ISM	Network-General	SASInstitute	TruSecure
Cisco	ExamExpress	HP	Juniper	Nokia	SCP	Veritas
Citrix	Exin	Huawei	Legato	Nortel	See-Beyond	Vmware
CIW	ExtremeNetworks	Hyperion	Lotus	Novell	SNIA	

and many others.. See complete list Here

