



050-691

Novell

Advanced Novell Network Management ; Netware 6.5

Thousands of IT Professionals before you have already passed their 050-691 certification exams using the Novell 050-691 Practice Exam from ipass4sure.com. Once you start using our 050-691 exam questions you simply can't stop! You are guaranteed to pass your Novell 050-691 test with ease and in your first attempt.

Here's what you can expect from the [ipass4sure](http://ipass4sure.com) Novell 050-691 course:

- * Up-to-Date Novell 050-691 questions designed to familiarize you with the real exam.
- * 100% correct Novell 050-691 answers you simply can't find in other 050-691 courses.
- * All of our tests are easy to download. Your file will be saved as a 050-691 PDF.
- * Novell 050-691 brain dump free content featuring the real 050-691 test questions.

Novell 050-691 Certification Exam is of core importance both in your Professional life and Novell Certification Path. With Novell Certification you can get a good job easily in the market and get on your path for success. Professionals who passed Novell 050-691 Certification Exam are an absolute favorite in the industry. If you pass Novell 050-691 Certification Exam then career opportunities are open for you.

Our 050-691 Questions & Answers provide you an easy solution to your Novell 050-691 Exam Preparation. Our 050-691 Q&As contains the most updated Novell 050-691 real tests. You can use our 050-691 Q&As on any PC with most versions of Acrobat Reader and prepare the exam easily.

QUESTION 1

Which RAID levels can be implemented with NSS? (Choose 2.)

- A. 0
- B. 1
- C. 2
- D. 3
- E. 4
- F. 5
- G. 6
- H. 7

Answer: A,B

QUESTION 2

Which method allows you to increase the amount of storage space on a server without adding more storage devices?

- A. Overbook the storage pool.
- B. Increase the size of the storage pool.
- C. Decrease the size of the storage pool.
- D. Recreate the partitions that a storage pool contains.

Answer: A

QUESTION 3

Your NetWare 6.5 server has been assigned the DNS name of da1.da.com. Which URL would you use in a browser window to access the iMonitor service on this server?

- A. <http://da1.da.com:8009/nds-summary>
- B. <http://da1.da.com:8009/edir-summary>
- C. <https://da1.da.com:8009/nds-summary>
- D. <https://da1.da.com:8008/nds-summary>
- E. <https://da1.da.com:8009/edir-summary>
- F. <https://da1.da.com:8008/edir-summary>

Answer: C

QUESTION 4

You want to split your DATA volume at the DATA:\USERS subdirectory level to the VOL1 volume on DA1. DA1 is located in the .Contractors.DA container in the DA-TREE tree. Which command, when issued from the server console, will do this?

- A. VLMN SPLIT DATA:\USERS VOL1

- B. VOLMN SPLIT DATA:\USERS VOL1
- C. VLMN SPLIT DATA:\USERS VOL1 DA1.Contractors.DA.DA-TREE
- D. VLMN SPLIT DATA:\USERS VOL1 .DA1.Contractors.DA.DA-TREE.
- E. VOLMN SPLIT DATA:\USERS VOL1 .DA1.Contractors.DA.DA-TREE
- F. VOLMN SPLIT DATA:\USERS VOL1 .DA1.Contractors.DA.DA-TREE.

Answer: F

QUESTION 5

When a DFS junction is created, the VLDB assigns the junction a unique ID. Where is this unique ID stored? (Choose 2.)

- A. In the VLDB
- B. In ConsoleOne
- C. In the volume's ACL
- D. In the NetWare Registry
- E. In the server's eDirectory object
- F. In the volume's eDirectory object
- G. In the Registry of the client workstations

Answer: A,F

QUESTION 6

While installing the Branch Office Appliance software, you are prompted to save the configuration to a diskette that can be used later during the installation of other Appliances. If you choose to do so, what filename is the configuration saved under?

- A. AUTOEXEC.NCF
- B. AUTOLOAD.CNF
- C. AUTOLOAD.NBO
- D. NBOCONFIG.NCF
- E. NBOCONFIG.TXT
- F. AUTOCONFIG.NCF

Answer: C

QUESTION 7

While migrating a NetWare 5.1 server to NetWare 6.5 using a Windows 2000 Professional workstation with Novell Client 4.83 installed, the migration fails. Given that the destination server has Universal Password deployed, what is the cause of the problem?

- A. Universal Password requires Novell Client 4.9 or later.
- B. Windows 2000 isn't compatible with Universal Password.
- C. The Migration Wizard isn't compatible with Windows 2000 Professional.
- D. NMAS must be disabled on the Novell Client 4.83 to be compatible with Universal

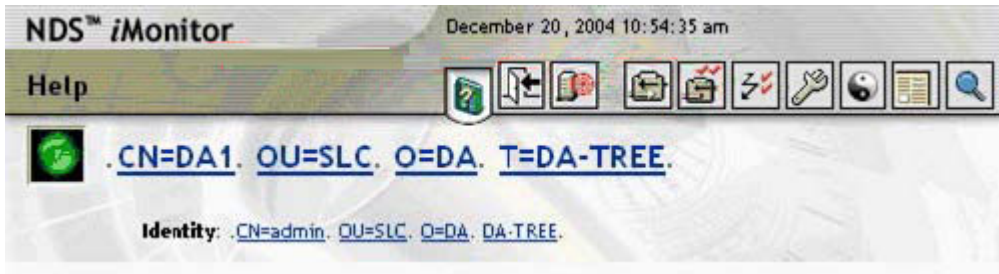
Password.

E. Novell Client 4.83 requires NCI 2.0.2 or later installed to be compatible with Universal Password.

Answer: A

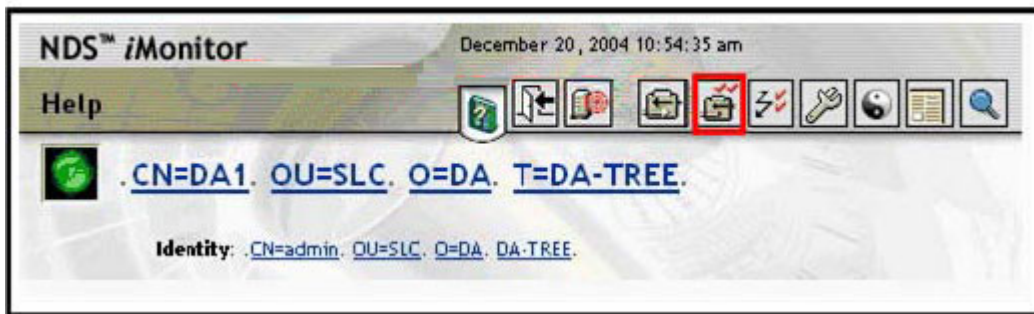
QUESTION 8

Exhibit:



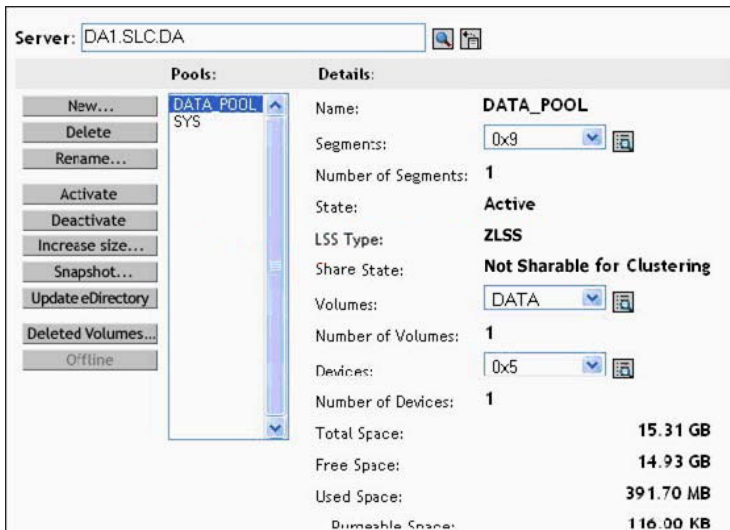
Click on the option that will allow you to check the version of eDirectory on a server.

Answer:

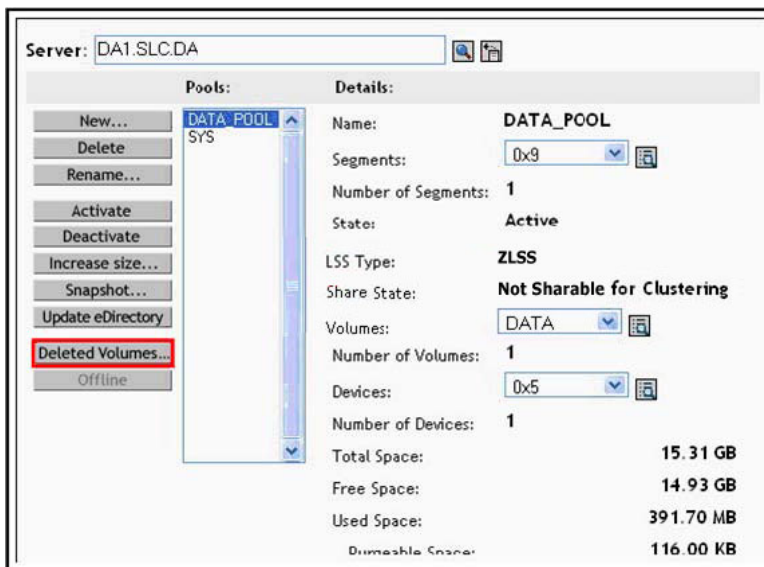


QUESTION 9

You need to restore an NSS logical volume that was deleted, but has not yet been purged.



Answer:



QUESTION 10

Assuming the CD drive in your workstation is assigned drive letter D, where is the installation file for the Server Consolidation Utility located?

- A. D:\NWSC.EXE
- B. D:\SERVCONS.EXE
- C. D:\TOOLS\NWSC.EXE
- D. D:\TOOLS\SERVCONS.EXE
- E. D:\PRODUCTS\SERVCONS\NWSC.EXE
- F. D:\PRODUCTS\SERVCONS\SERVCONS.EXE

Answer: E

SAMPLE EXAM



Pass4sure \$89 Lifetime Membership Features;

- Pass4sure \$89 Lifetime Membership includes Over **2100** Exams in One Price.
- **All** Pass4sure **Questions and Answers** are included in \$89 package.
- **All** Pass4sure audio exams are included **free** in \$89 package (See List).
- **All** Pass4sure study guides are included **free** in \$89 package (See List).
- **Lifetime** login access, no hidden fee, no login expiry.
- **Free updates** for Lifetime.
- **Free Download Access** to All new exams added in future.
- Accurate answers with **explanations** (If applicable).
- **Verified answers** researched by industry experts.
- Study Material **updated** on regular basis.
- Questions, Answers and Study Guides are downloadable in **PDF** format.
- Audio Exams are downloadable in **MP3** format.
- **No authorization** code required to open exam.
- **Portable** anywhere.
- 100% success **Guarantee**.
- **Fast**, helpful support **24x7**.



View list of All exams (Q&A) provided in \$89 membership;
<http://www.ipass4sure.com/allexams.asp>

View list of All Study Guides (SG) provided FREE for members;
<http://www.ipass4sure.com/study-guides.asp>

View list of All Audio Exams (AE) provided FREE for members;
<http://www.ipass4sure.com/audio-exams.asp>

Download All Exams Sample QAs.
<http://www.ipass4sure.com/samples.asp>

To purchase \$89 Lifetime Full Access Membership click here (One time fee)
<https://www.regnow.com/softsell/nph-softsell.cgi?item=30820-3>

3COM	CompTIA	Filemaker	IBM	LPI	OMG	Sun
ADOBE	ComputerAssociates	Fortinet	IISFA	McAfee	Oracle	Sybase
APC	CWNP	Foundry	Intel	McData	PMI	Symantec
Apple	DELL	Fujitsu	ISACA	Microsoft	Polycom	TeraData
BEA	ECCouncil	GuidanceSoftware	ISC2	Mile2	RedHat	TIA
BICSI	EMC	HDI	ISEB	NetworkAppliance	Sair	Tibco
CheckPoint	Enterasys	Hitachi	ISM	Network-General	SASInstitute	TruSecure
Cisco	ExamExpress	HP	Juniper	Nokia	SCP	Veritas
Citrix	Exin	Huawei	Legato	Nortel	See-Beyond	Vmware
CIW	ExtremeNetworks	Hyperion	Lotus	Novell	SNIA	

and many others.. See complete list Here

