



050-682

Novell

Advanced Novell Network Management

Thousands of IT Professionals before you have already passed their 050-682 certification exams using the Novell 050-682 Practice Exam from ipass4sure.com. Once you start using our 050-682 exam questions you simply can't stop! You are guaranteed to pass your Novell 050-682 test with ease and in your first attempt.

Here's what you can expect from the [ipass4sure](http://ipass4sure.com) Novell 050-682 course:

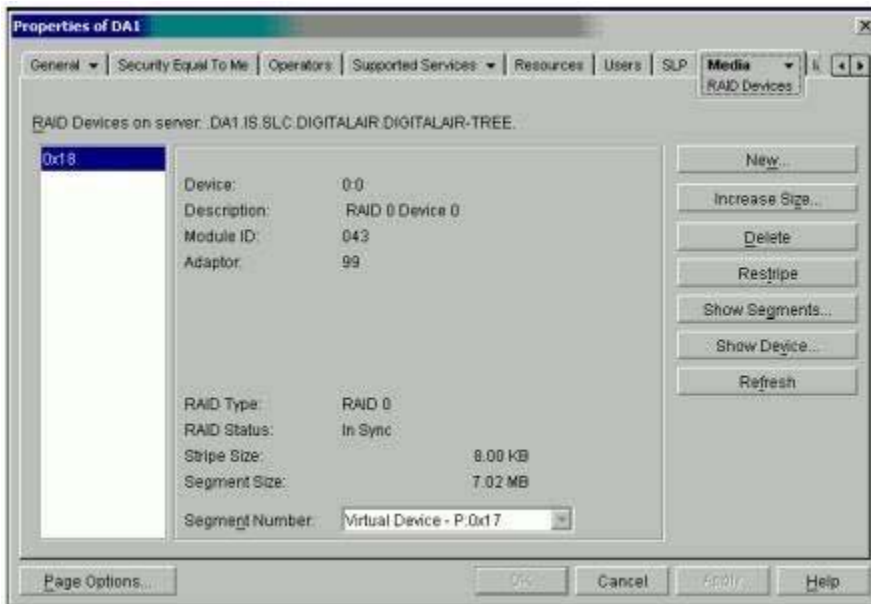
- * Up-to-Date Novell 050-682 questions designed to familiarize you with the real exam.
- * 100% correct Novell 050-682 answers you simply can't find in other 050-682 courses.
- * All of our tests are easy to download. Your file will be saved as a 050-682 PDF.
- * Novell 050-682 brain dump free content featuring the real 050-682 test questions.

Novell 050-682 Certification Exam is of core importance both in your Professional life and Novell Certification Path. With Novell Certification you can get a good job easily in the market and get on your path for success. Professionals who passed Novell 050-682 Certification Exam are an absolute favorite in the industry. If you pass Novell 050-682 Certification Exam then career opportunities are open for you.

Our 050-682 Questions & Answers provide you an easy solution to your Novell 050-682 Exam Preparation. Our 050-682 Q&As contains the most updated Novell 050-682 real tests. You can use our 050-682 Q&As on any PC with most versions of Acrobat Reader and prepare the exam easily.

QUESTION 1:

You just added a second hard drive to your RAID system. Click the area of the graphic that redistributes data across all RAID devices, including the new hard drive.



Answer:

Explanation: Click on Restripe
page 6-9 Restriping redistributes data across all Raid devices, including the new hard drive.

QUESTION 2:

Using the UAL licensing model, where is it recommended to install user license if the server object resides in the FLIGHTOPS.DEL.DIGITALAIR container and the user objects reside in the CUSTSERV.DEL.DIGITALAIR container?

- A. In any container.
- B. In the Security container.
- C. In the DIGITALAIR container.
- D. In the CUSTSERV.DEL.DIGITALAIR container.
- E. In the CUSTSERV.DEL.DIGITALAIR or DEL.DIGITALAIR containers.
- F. In the FLIGHTOPS.DEL.DIGITALAIR or DEL.DIGITALAIR containers.

Answer: E

Explanation:

page 1-15 A search for the License starts in the User context and then searches up the tree, therefore the UAL license needs to be either in the user context or in a container above that context.

QUESTION 3:

In a NCS environment, a resource state of ALERT has been placed on a resource. What is a reason that a resource would be in an ALERT state?

- A. The resource is shut down or in an inactive state.
- B. The resource is unloading from the server it was running on.
- C. The resource is not running and requires administrator intervention.
- D. There isn't an assigned node up that the resource can be loaded on.
- E. The Start, Failover, or Failback mode for the resource has been set to manual.

Answer: E

QUESTION 4:

You have just completed installing NCS and are now going to create a shared disk partition. Which utility is used to create a shared disk partition?

- A. iMonitor
- B. iManager
- C. ConsoleOne
- D. Server Manager
- E. NWCONFIG.NLM

Answer: C

Explanation:

page 10-2 Use Console One to administrate NCS and create a shared disk partition.

QUESTION 5:

Which are tools you can use at the server console prompt to help troubleshoot IP problems? (Choose two)

- A. PING
- B. TCPCON
- C. NETSTAT
- D. TRACERT
- E. IPCONFIG

Answer: A, B

Explanation:

page 2-20 through 2-23 Ping and TCPCON can be run from a Netware Console, NETSTAT, TRACERT, and IPCONFIG will all be run from a workstation to test connectivity issues.

QUESTION 6:

When performing a migration to a NetWare 6 server, which are valid statements regarding copying volumes? (Choose two)

- A. The volumes cannot be compressed.
- B. The source and destination server's volumes must be NSS.
- C. You do not need to copy all of the volumes at the same time.
- D. The source and destination server's volume size must be the same.
- E. The source and destination server's volume names must be the same.

Answer: C, E

QUESTION 7:

Which RAID levels can be implemented with NSS? (Choose two)

- A. 0
- B. 1
- C. 2
- D. 3
- E. 4
- F. 5
- G. 6
- H. 7

Answer: A, B

Explanation:

page 6-22 You can implement RAID 0 and RAID 1(mirroring) using NSS.

QUESTION 8:

When checking the state of a cluster resource, what color will the resource appear as, if it is unknown?

- A. Red
- B. Gray
- C. Green
- D. Yellow
- E. Blank (or no color)

Answer: B

Explanation:

page 9-36 Red = Node has failed and is waiting for administrator intervention, Gray= Node is not a member of the cluster or is in an unknown state, Green= Node and resources are working normally, Yellow= (a yellow ball in the middle of the node) master node, Blank= it is unassigned, offline, in a changing state or in the process of loading or unloading,

QUESTION 9:

Which is a useful troubleshooting step if a server is not communicating?

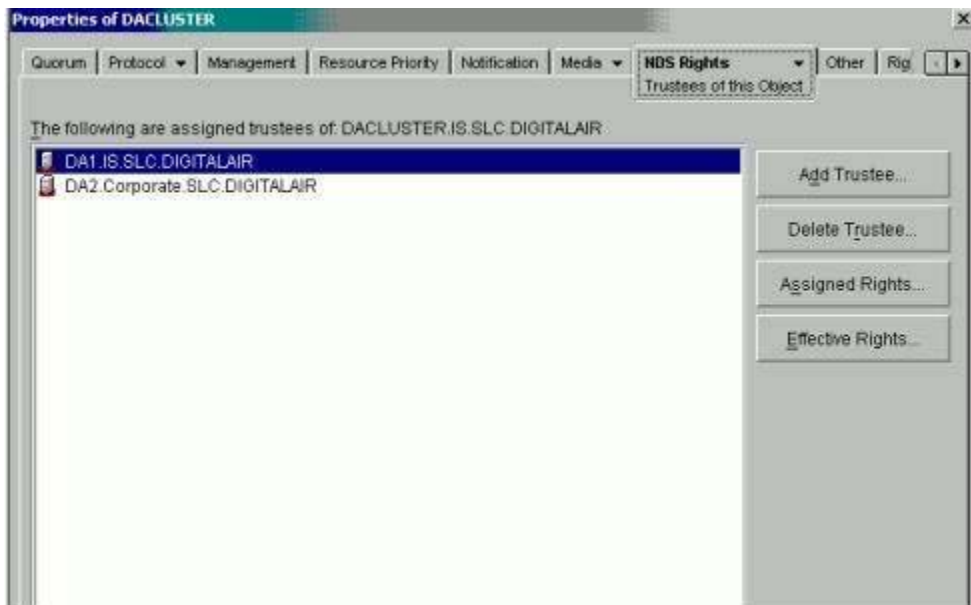
- A. Verify that cache buffers are over 20%.
- B. Verify that the server is not out of packet receive buffers.
- C. Verify that the DOS=HIGH command is not in CONFIG.SYS.
- D. Remove memory managers from loading in AUTOEXEC.NCF.

Answer: B

QUESTION 10:

Shown are properties of the DA_CLUSTER object. There are applications in the cluster that you want to load before others.

Click on the tab that will allow you to specify the order that applications load within the cluster.



Answer:

Explanation: Click Resource Priority

SAMPLE EXAM



Pass4sure \$89 Lifetime Membership Features;

- Pass4sure \$89 Lifetime Membership includes Over **2100** Exams in One Price.
- **All** Pass4sure **Questions and Answers** are included in \$89 package.
- **All** Pass4sure audio exams are included **free** in \$89 package (See List).
- **All** Pass4sure study guides are included **free** in \$89 package (See List).
- **Lifetime** login access, no hidden fee, no login expiry.
- **Free updates** for Lifetime.
- **Free Download Access** to All new exams added in future.
- Accurate answers with **explanations** (If applicable).
- **Verified answers** researched by industry experts.
- Study Material **updated** on regular basis.
- Questions, Answers and Study Guides are downloadable in **PDF** format.
- Audio Exams are downloadable in **MP3** format.
- **No authorization** code required to open exam.
- **Portable** anywhere.
- 100% success **Guarantee**.
- **Fast**, helpful support **24x7**.



View list of All exams (Q&A) provided in \$89 membership;
<http://www.ipass4sure.com/allexams.asp>

View list of All Study Guides (SG) provided FREE for members;
<http://www.ipass4sure.com/study-guides.asp>

View list of All Audio Exams (AE) provided FREE for members;
<http://www.ipass4sure.com/audio-exams.asp>

Download All Exams Sample QAs.
<http://www.ipass4sure.com/samples.asp>

To purchase \$89 Lifetime Full Access Membership click here (One time fee)
<https://www.regnow.com/softsell/nph-softsell.cgi?item=30820-3>

3COM	CompTIA	Filemaker	IBM	LPI	OMG	Sun
ADOBE	ComputerAssociates	Fortinet	IISFA	McAfee	Oracle	Sybase
APC	CWNP	Foundry	Intel	McData	PMI	Symantec
Apple	DELL	Fujitsu	ISACA	Microsoft	Polycom	TeraData
BEA	ECCouncil	GuidanceSoftware	ISC2	Mile2	RedHat	TIA
BICSI	EMC	HDI	ISEB	NetworkAppliance	Sair	Tibco
CheckPoint	Enterasys	Hitachi	ISM	Network-General	SASInstitute	TruSecure
Cisco	ExamExpress	HP	Juniper	Nokia	SCP	Veritas
Citrix	Exin	Huawei	Legato	Nortel	See-Beyond	Vmware
CIW	ExtremeNetworks	Hyperion	Lotus	Novell	SNIA	

and many others.. See complete list Here

