



9A0-036

ADOBE

Adobe PhotoShop CS ACE

Thousands of IT Professionals before you have already passed their 9A0-036 certification exams using the ADOBE 9A0-036 Practice Exam from ipass4sure.com. Once you start using our 9A0-036 exam questions you simply can't stop! You are guaranteed to pass your ADOBE 9A0-036 test with ease and in your first attempt.

Here's what you can expect from the [ipass4sure](http://ipass4sure.com) ADOBE 9A0-036 course:

- * Up-to-Date ADOBE 9A0-036 questions designed to familiarize you with the real exam.
- * 100% correct ADOBE 9A0-036 answers you simply can't find in other 9A0-036 courses.
- * All of our tests are easy to download. Your file will be saved as a 9A0-036 PDF.
- * ADOBE 9A0-036 brain dump free content featuring the real 9A0-036 test questions.

ADOBE 9A0-036 Certification Exam is of core importance both in your Professional life and ADOBE Certification Path. With ADOBE Certification you can get a good job easily in the market and get on your path for success. Professionals who passed ADOBE 9A0-036 Certification Exam are an absolute favorite in the industry. If you pass ADOBE 9A0-036 Certification Exam then career opportunities are open for you.

Our 9A0-036 Questions & Answers provide you an easy solution to your ADOBE 9A0-036 Exam Preparation. Our 9A0-036 Q&As contains the most updated ADOBE 9A0-036 real tests. You can use our 9A0-036 Q&As on any PC with most versions of Acrobat Reader and prepare the exam easily.

Question: 1

Which layer parameter can be saved when creating a Layer Comp?

- A. layer styles
- B. layer opacity
- C. layer stacking order
- D. layer blending mode

Answer: A

Question: 2

Which items are saved as part of a workspace?

- A. tool settings and palette positions
- B. tool settings and keyboard shortcuts
- C. palette positions and keyboard shortcuts
- D. the positions of all open palettes and the toolbox

Answer: D

Question: 3

Which parameter can you monitor in the Status Bar?

- A. the name of the active layer
- B. the document's color profile
- C. the name of the active document
- D. the document's modification date

Answer: B

Question: 4

You want to paint a layer by using the Brush tool with an opacity setting of 50%. Where do you change the opacity setting?

- A. Status Bar
- B. Layer palette
- C. Brushes palette
- D. Tool Options Bar

Answer: D

Question: 5

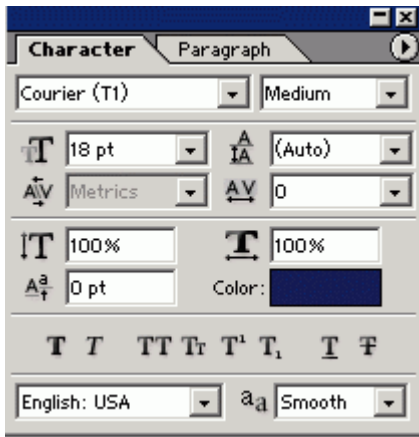
You have created several custom contours for Drop Shadow effects. You want to save the custom contours as a set while maintaining the default contours. What should you do?

- A. from the Styles palette menu, choose Save Styles
- B. from the Layer palette menu, choose New Layer Set
- C. in the Preset Manager dialog box, select the contours and click on Save Set
- D. while editing contours in the Layer Style dialog box, choose Save Contours from the fly-out menu.

Answer: C

Question: 6

Exhibit.



Which Character palette option controls kerning?

- A. A
- B. B
- C. C
- D. D

Answer: A

Question: 7

You have selected the Type tool. You want to create a new type layer overlapping a previous one.

What should you do?

- A. double click with the Type tool
- B. hold down the Shift key as you click with the Type tool
- C. hold down the Option (Mac OS) or Alt (Windows) key as you click with the Type tool.
- D. Hold down the Command (Mac OS) or Ctrl (Windows) key as you click with the Type tool.

Answer: B

Question: 8

Exhibit.

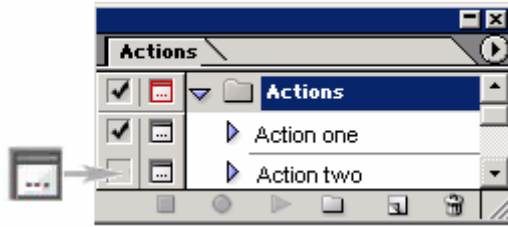


You have created type on a path. You want to move the type along the path. Which tool (s) should you use to drag the type?

- A. Move tool
- B. Path Type tool
- C. Horizontal or Vertical Type tool
- D. Path Selection or Direct Selection tool

Answer: D

Question: 9
Exhibit.



In the exhibit, what does the icon on the left indicate?

- A. that the action is currently being recorded
- B. that all the steps in the action offer the user a dialog box
- C. that one or more, but not all, steps in the action offer the user a dialog box
- D. that the action is currently paused in playback, waiting for a response from the user

Answer: C

Question: 10

You are applying an action to a group of images using the Batch command. The action contains a Save As TIFF command, with specific options chosen. You want the processed files to be saved with those options, but to be renamed.

Which two options in the Batch dialog box should you choose? (Choose two.)

- A. Batch Rename
- B. Destination: Folder
- C. Include All Subfolders
- D. Destination: Save and Close
- E. Override Action "Save As" Commands

Answer: A, B

Question: 11

You are recording an action. During its playback, you want an image's magnification to be adjusted to fit the image on screen.

What should you do?

- A. choose View > Fit on Screen
- B. when you get to the point for the magnification change, choose View > Fit on Screen
- C. use the Insert Menu Item command from the Action palette menu, then choose View > Actual Pixels
- D. Use the Insert Menu Item command from the Action palette menu, then choose View > Fit on Screen

Answer: D

Question: 12

Exhibit.

SAMPLE EXAM



Pass4sure \$89 Lifetime Membership Features;

- Pass4sure \$89 Lifetime Membership includes Over **2100** Exams in One Price.
- **All** Pass4sure **Questions and Answers** are included in \$89 package.
- **All** Pass4sure audio exams are included **free** in \$89 package (See List).
- **All** Pass4sure study guides are included **free** in \$89 package (See List).
- **Lifetime** login access, no hidden fee, no login expiry.
- **Free updates** for Lifetime.
- **Free Download Access** to All new exams added in future.
- Accurate answers with **explanations** (If applicable).
- **Verified answers** researched by industry experts.
- Study Material **updated** on regular basis.
- Questions, Answers and Study Guides are downloadable in **PDF** format.
- Audio Exams are downloadable in **MP3** format.
- **No authorization** code required to open exam.
- **Portable** anywhere.
- 100% success **Guarantee**.
- **Fast**, helpful support **24x7**.



View list of All exams (Q&A) provided in \$89 membership;
<http://www.ipass4sure.com/allexams.asp>

View list of All Study Guides (SG) provided FREE for members;
<http://www.ipass4sure.com/study-guides.asp>

View list of All Audio Exams (AE) provided FREE for members;
<http://www.ipass4sure.com/audio-exams.asp>

Download All Exams Sample QAs.
<http://www.ipass4sure.com/samples.asp>

To purchase \$89 Lifetime Full Access Membership click here (One time fee)
<https://www.regnow.com/softsell/nph-softsell.cgi?item=30820-3>

3COM	CompTIA	Filemaker	IBM	LPI	OMG	Sun
ADOBE	ComputerAssociates	Fortinet	IISFA	McAfee	Oracle	Sybase
APC	CWNP	Foundry	Intel	McData	PMI	Symantec
Apple	DELL	Fujitsu	ISACA	Microsoft	Polycom	TeraData
BEA	ECCouncil	GuidanceSoftware	ISC2	Mile2	RedHat	TIA
BICSI	EMC	HDI	ISEB	NetworkAppliance	Sair	Tibco
CheckPoint	Enterasys	Hitachi	ISM	Network-General	SASInstitute	TruSecure
Cisco	ExamExpress	HP	Juniper	Nokia	SCP	Veritas
Citrix	Exin	Huawei	Legato	Nortel	See-Beyond	Vmware
CIW	ExtremeNetworks	Hyperion	Lotus	Novell	SNIA	

and many others.. See complete list Here

