



156-915

CheckPoint

Accelerated CCSE NGX

Thousands of IT Professionals before you have already passed their 156-915 certification exams using the CheckPoint 156-915 Practice Exam from ipass4sure.com. Once you start using our 156-915 exam questions you simply can't stop! You are guaranteed to pass your CheckPoint 156-915 test with ease and in your first attempt.

Here's what you can expect from the [ipass4sure](http://ipass4sure.com) CheckPoint 156-915 course:

- * Up-to-Date CheckPoint 156-915 questions designed to familiarize you with the real exam.
- * 100% correct CheckPoint 156-915 answers you simply can't find in other 156-915 courses.
- * All of our tests are easy to download. Your file will be saved as a 156-915 PDF.
- * CheckPoint 156-915 brain dump free content featuring the real 156-915 test questions.

CheckPoint 156-915 Certification Exam is of core importance both in your Professional life and CheckPoint Certification Path. With CheckPoint Certification you can get a good job easily in the market and get on your path for success. Professionals who passed CheckPoint 156-915 Certification Exam are an absolute favorite in the industry. If you pass CheckPoint 156-915 Certification Exam then career opportunities are open for you.

Our 156-915 Questions & Answers provide you an easy solution to your CheckPoint 156-915 Exam Preparation. Our 156-915 Q&As contains the most updated CheckPoint 156-915 real tests. You can use our 156-915 Q&As on any PC with most versions of Acrobat Reader and prepare the exam easily.

Question: 1

When restoring NGX using the upgrade_import command, which of the following items are NOT restored?

- A. Security Policies
- B. Global properties
- C. Licenses
- D. User groups
- E. Route tables

Answer: E

Question: 2

Your organization has many VPN-1 Edge gateways at various branch offices, to allow VPN-1 SecureClient users to access company resources. For security reasons, your organization's Security Policy requires all Internet traffic initiated behind the VPN-1 Edge gateways first be inspected by your headquarters' VPN-1 Pro Security Gateway. How do you configure VPN routing in this star VPN Community?

- A. To the Internet and other targets only
- B. To the center and other satellites, through the center
- C. To the center only
- D. To the center, or through the center to other satellites, then to the Internet and other VPN targets

Answer: D

Question: 3

Your organization's security infrastructure separates Security Gateways geographically. You must request a central license for one remote Security Gateway. How would you request and apply the license? Request a central license:

- A. using the remote Gateway's IP address. Apply the license locally with the cplic put command.
- B. for the Gateways' IP address. Apply the license on the SmartCenter Server with the cprlic put command.
- C. using the remote Gateway's IP address. Attach the license to the remote Gateway via SmartUpdate.
- D. using your SmartCenter Server's IP address. Attach the license to the remote Gateway via SmartUpdate.
- E. using the SmartCenter Server's IP address. Apply the license locally on the remote Gateway with the cplic put command.

Answer: D

Question: 4

Your VPN Community includes three Security Gateways. Each Gateway has its own internal network defined as a VPN Domain. You must test the VPN-1 NGX route-based VPN feature, without stopping the VPN. What is the correct order of steps?

- A.
 1. Add a new interface on each Gateway.
 2. Remove the newly added network from the current VPN Domain for each Gateway.
 3. Create VTIs on each Gateway, to point to the other two peers
 4. Enable advanced routing on all three Gateways.
- B.
 1. Add a new interface on each Gateway.
 2. Remove the newly added network from the current VPN Domain in each gateway object.

3. Create VPN Tunnel Interfaces (VTI) on each gateway object, to point to the other two peers.
 4. Add static routes on three Gateways, to route the new network to each peer's VTI interface.
- C.
1. Add a new interface on each Gateway.
 2. Add the newly added network into the existing VPN Domain for each Gateway.
 3. Create VTIs on each gateway object, to point to the other two peers.
 4. Enable advanced routing on all three Gateways.
- D.
1. Add a new interface on each Gateway.
 2. Add the newly added network into the existing VPN Domain for each gateway object.
 3. Create VTIs on each gateway object, to point to the other two peers.
 4. Add static routes on three Gateways, to route the new networks to each peer's VTI interface.

Answer: B

Question: 5

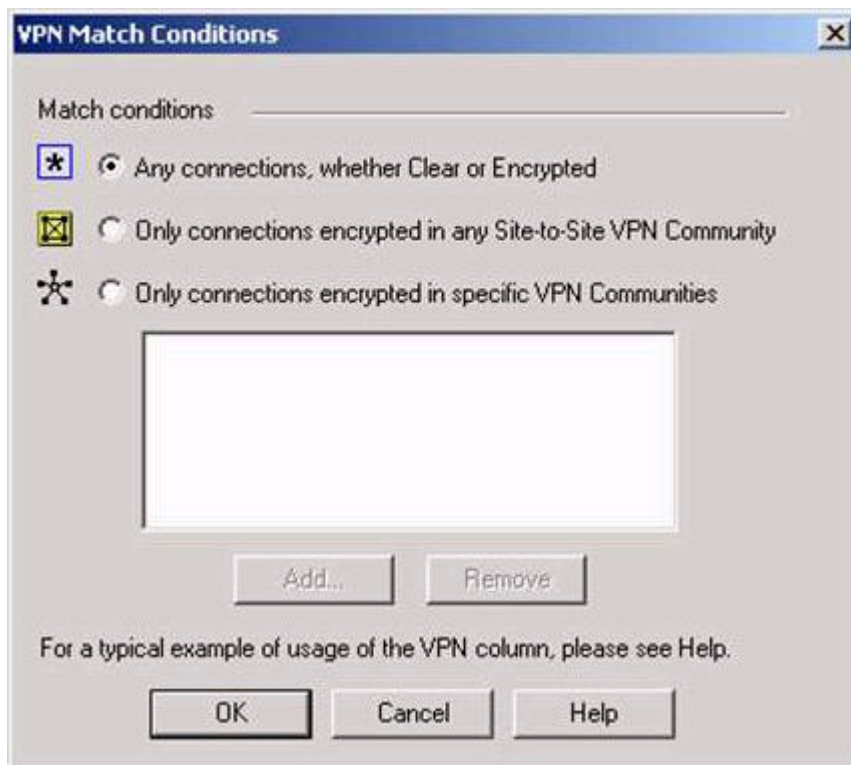
Eric wants to see all URLs' full destination paths in the SmartView Tracker logs, not just the fully qualified domain name of the Web servers. For example, the information filed of a log entry displays the URL `http://hp.msn.com/css/home/hpcl1012.css`. How can Eric best customize SmartView Tracker to see the logs he wants? Configure the URI resource, and select

- A. "transparent" as the connection method
- B. "tunneling" as the connection method
- C. "optimize URL logging"; use the URI resource in the rule, with action "accept"
- D. "Enforce URL capability"; use the URI resource in the rule, with action "accept"

Answer: C

Question: 6

Exhibit:



Steve tries to configure Directional VPN Rule Match in the Rule Base. But the Match column does not have the option to see the Directional Match. Steve sees the following screen. What is the problem?

- A. Steve must enable `directional_match(true)` in the `objectes_5_0.C` file on SmartCenter Server.
- B. Steve must enable Advanced Routing on each Security Gateway.
- C. Steve must enable VPN Directional Match on the VPN Advanced screen, in Global properties.
- D. Steve must enable a dynamic-routing protocol, such as OSPF, on the Gateways.
- E. Steve must enable VPN Directional Match on the gateway object's VPN tab.

Answer: C

Question: 7

In a Management High Availability (HA) configuration, you can configure synchronization to occur automatically, when:

1. The Security Policy is installed.
2. The Security Policy is saved.
3. The Security Administrator logs in to the secondary SmartCenter Server, and changes its status to active.
4. A scheduled event occurs.
5. The user database is installed.

Select the BEST response for the synchronization sequence. Choose one.

- A. 1, 2, 3
- B. 1, 2, 3, 4
- C. 1, 3, 4
- D. 1, 2, 5
- E. 1, 2, 4

Answer: E

Question: 8

After importing the NGX schema into an LDAP server, what should you enable? Schema checking

- A. Encryption
- B. UserAuthority
- C. ConnectControl
- D. Secure Internal Communications

Answer: A

Question: 9

What is the command to see the licenses of the Security Gateway FWDALLAS from your SmartCenter Server?

- A. `cprlic print FWDALLAS`
- B. `fw licprint FWDALLAS`
- C. `fw tab -t fwlic EWDALLAS`
- D. `cplic print FWDALLAS`
- E. `fw lic print FWDALLAS`

Answer: A

Question: 10

How can you unlock an administrator's account, which was been locked due to SmartCenter Access settings in Global Properties?

- A. Type `fwm lock_admin -ua` from the command line of the SmartCenter Server.
- B. Clear the "locked" box of the user's General Properties in SmartDashboard.
- C. Type `fwm unlock_admin -ua` from the command line of the SmartCenter Server
- D. Type `fwm unlock_admin -ua` from the command line of the Security Gateway.
- E. Delete the file `admin.lock` in the `$FWDIR/tmp/directory` of the SmartCenter Server.

Answer: A

Question: 11

You are reviewing SmartView Tracker entries, and see a Connection Rejection on a Check Point QoS rule. What causes the Connection Rejection?

- A. No QoS rule exists to match the rejected traffic.
- B. The number of guaranteed connections is exceeded. The rule's action properties are not set to accept additional connections.
- C. The Constant Bit Rate for a Low Latency Class has been exceeded by greater than 10%, and the Maximal Delay is set below requirements.
- D. Burst traffic matching the Default Rule is exhausting the Check Point QoS global packet buffers.
- E. The guarantee of one of the rule's sub-rules exceeds the guarantee in the rule itself.

Answer: B

Question: 12

You are preparing to configure your VoIP Domain Gatekeeper object. Which two other objects should you have created first?

- A. An object to represent the IP phone network, AND an object to represent the host on which the proxy is installed.
- B. An object to represent the PSTN phone network, AND an object to represent the IP phone network
- C. An object to represent the IP phone network, AND an object to represent the host on which the gatekeeper is installed.
- D. An object to represent the Q.931 service origination host. AND an object to represent the H.245 termination host.
- E. An object to represent the call manager. AND an object to represent the host on which the transmission router is installed.

Answer: C

Question: 13

In SmartView Tracker, which rule shows when a packet is dropped due to anti-spoofing?

- A. Rule 0
- B. Cleanup Rule
- C. Rule 1
- D. Rule 999
- E. Stealth Rule

SAMPLE EXAM



Pass4sure \$89 Lifetime Membership Features;

- Pass4sure \$89 Lifetime Membership includes Over **2100** Exams in One Price.
- **All** Pass4sure **Questions and Answers** are included in \$89 package.
- **All** Pass4sure audio exams are included **free** in \$89 package (See List).
- **All** Pass4sure study guides are included **free** in \$89 package (See List).
- **Lifetime** login access, no hidden fee, no login expiry.
- **Free updates** for Lifetime.
- **Free Download Access** to All new exams added in future.
- Accurate answers with **explanations** (If applicable).
- **Verified answers** researched by industry experts.
- Study Material **updated** on regular basis.
- Questions, Answers and Study Guides are downloadable in **PDF** format.
- Audio Exams are downloadable in **MP3** format.
- **No authorization** code required to open exam.
- **Portable** anywhere.
- 100% success **Guarantee**.
- **Fast**, helpful support **24x7**.



View list of All exams (Q&A) provided in \$89 membership;
<http://www.ipass4sure.com/allexams.asp>

View list of All Study Guides (SG) provided FREE for members;
<http://www.ipass4sure.com/study-guides.asp>

View list of All Audio Exams (AE) provided FREE for members;
<http://www.ipass4sure.com/audio-exams.asp>

Download All Exams Sample QAs.
<http://www.ipass4sure.com/samples.asp>

To purchase \$89 Lifetime Full Access Membership click here (One time fee)
<https://www.regnow.com/softsell/nph-softsell.cgi?item=30820-3>

3COM	CompTIA	Filemaker	IBM	LPI	OMG	Sun
ADOBE	ComputerAssociates	Fortinet	IISFA	McAfee	Oracle	Sybase
APC	CWNP	Foundry	Intel	McData	PMI	Symantec
Apple	DELL	Fujitsu	ISACA	Microsoft	Polycom	TeraData
BEA	ECCouncil	GuidanceSoftware	ISC2	Mile2	RedHat	TIA
BICSI	EMC	HDI	ISEB	NetworkAppliance	Sair	Tibco
CheckPoint	Enterasys	Hitachi	ISM	Network-General	SASInstitute	TruSecure
Cisco	ExamExpress	HP	Juniper	Nokia	SCP	Veritas
Citrix	Exin	Huawei	Legato	Nortel	See-Beyond	Vmware
CIW	ExtremeNetworks	Hyperion	Lotus	Novell	SNIA	

and many others.. See complete list Here

