



0B0-103

BEA

8.1 Certified Developer : Integration Solutions

Thousands of IT Professionals before you have already passed their 0B0-103 certification exams using the BEA 0B0-103 Practice Exam from ipass4sure.com. Once you start using our 0B0-103 exam questions you simply can't stop! You are guaranteed to pass your BEA 0B0-103 test with ease and in your first attempt.

Here's what you can expect from the [ipass4sure](http://ipass4sure.com) BEA 0B0-103 course:

- * Up-to-Date BEA 0B0-103 questions designed to familiarize you with the real exam.
- * 100% correct BEA 0B0-103 answers you simply can't find in other 0B0-103 courses.
- * All of our tests are easy to download. Your file will be saved as a 0B0-103 PDF.
- * BEA 0B0-103 brain dump free content featuring the real 0B0-103 test questions.

BEA 0B0-103 Certification Exam is of core importance both in your Professional life and BEA Certification Path. With BEA Certification you can get a good job easily in the market and get on your path for success. Professionals who passed BEA 0B0-103 Certification Exam are an absolute favorite in the industry. If you pass BEA 0B0-103 Certification Exam then career opportunities are open for you.

Our 0B0-103 Questions & Answers provide you an easy solution to your BEA 0B0-103 Exam Preparation. Our 0B0-103 Q&As contains the most updated BEA 0B0-103 real tests. You can use our 0B0-103 Q&As on any PC with most versions of Acrobat Reader and prepare the exam easily.

Question: 1

Consider this code snippet:

```
try {
MBeanHome home = getMBeanHome(url, username, password);
ApplicationRuntimeMBean app = getApplicationRuntimeMBean(home, appName);
WebAppComponentRuntimeMBean webapp = getWebAppComponentRuntimeMBean(app, ctxRoot);
ServletRuntimeMBean servlet = getServletRuntimeMBean(webapp, servletName);
System.out.println("Invocation count is " +
servlet.getInvocationTotalCount());
} catch (Exception e) {
System.out.println("Exception caught: " + e);
}
}
```


What information does the code provide?


- A. Runtime information about all Servlet Sessions
- B. Runtime invocation totals for a Servlet
- C. Runtime information for all Servlets on a specific server
- D. Configuration information defined in the deployment descriptors of all Servlets
- E. Runtime information for all Servlets that have been invoked at least once


Answer: B


Question: 2


You have finished creating your process definition. The definition is somewhat complex, and it involves multiple entry points and branches; you want to step through the definition to test for correct execution and flow. You have reached a breakpoint that you set in your process definition. The breakpoint is a loop; to step through each iteration and display the current customer credit-limit amount, which Debug step should you use?

A. Step into---//--- 

B. Step out---//--- 

C. Step over---//--- 

D. Clear all breakpoints---//--- 

E. Continue---//--- 

Answer: A

Question: 3

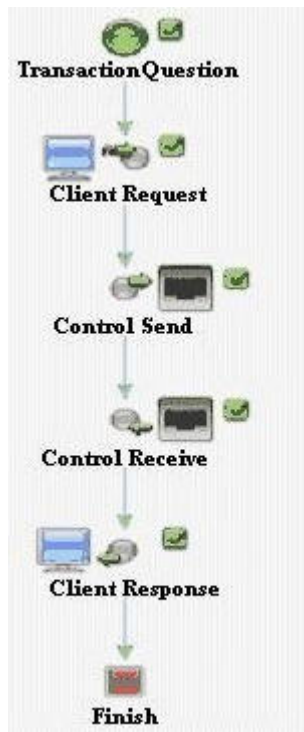
A mainframe batch process extracts sales information from a legacy point-of-sale system, nightly. The batch process deposits this information in a binary file in the directory /usr/local/POS/salesdata/ftp_report_sales_daily . What is the best way to access the data in your process definition?

- A. Use an FTP control that is called synchronously from the process definition.
- B. Create an Application View to access a J2CA adaptor that integrates with the legacy mainframe application, and call an Application View control from your process.
- C. Use a File control that is configured to read ftp_report_sales_daily from the directory /usr/local/POS/salesdata .
- D. Create an Application View to integrate with the FTP server and call an Application View control from your process.
- E. Use an FTP control that is called asynchronously from the process definition.

Answer: C

Question: 4

Consider this JPD diagram:



All transaction demarcation is performed by WLI (not by the control code). Successful execution of this process results in how many transactions?

- A. 1
- B. 2
- C. 3
- D. 4
- E. 0

Answer: B

Question: 5

Which is NOT a valid setting for the conversation phase of a Web service operation?

- A. none
- B. start
- C. finish
- D. suspend
- E. continue

Answer: D

Question: 6

You have finished creating your process definition. The definition is somewhat complex, and it involves multiple entry points and branches; you want to step through the definition to test for correct execution and flow. You created a complex XQuery that maps a purchase order XML document onto arguments of a Web service method. In WebLogic Workshop, what is the easiest way to test the validity of this XQuery expression?

- A. In Format Builder, set a breakpoint on the first line of the MFL file.
- B. Display the transformation control in Design View, and select the Test View tab of the XQuery method.
- C. Set a breakpoint on the XQuery method when displaying the transformation control in Design View.
- D. You cannot test an XQuery expression in Workshop.
- E. Set a breakpoint on the called method of the Web service and use the service's test page to verify that data was converted correctly by the XQuery expression.

Answer: B

Question: 7

Which statement about the use of Application Views is correct?

- A. Publishing an Application View results in the creation of an EAR file.
- B. Publishing an Application View results in the creation of an EJB JAR file.
- C. The control must be created in the Application Integration Design Console.
- D. The Application View must be created in Workshop before the control can be created.
- E. The Application View must be created in the Integration Administration console before the control can be created.

Answer: B

Question: 8

Using the following UML activity diagram, place the first five process nodes you would use, from first to last, to implement this business process.

SAMPLE EXAM



Pass4sure \$89 Lifetime Membership Features;

- Pass4sure \$89 Lifetime Membership includes Over **2100** Exams in One Price.
- **All** Pass4sure **Questions and Answers** are included in \$89 package.
- **All** Pass4sure audio exams are included **free** in \$89 package (See List).
- **All** Pass4sure study guides are included **free** in \$89 package (See List).
- **Lifetime** login access, no hidden fee, no login expiry.
- **Free updates** for Lifetime.
- **Free Download Access** to All new exams added in future.
- Accurate answers with **explanations** (If applicable).
- **Verified answers** researched by industry experts.
- Study Material **updated** on regular basis.
- Questions, Answers and Study Guides are downloadable in **PDF** format.
- Audio Exams are downloadable in **MP3** format.
- **No authorization** code required to open exam.
- **Portable** anywhere.
- 100% success **Guarantee**.
- **Fast**, helpful support **24x7**.



View list of All exams (Q&A) provided in \$89 membership;
<http://www.ipass4sure.com/allexams.asp>

View list of All Study Guides (SG) provided FREE for members;
<http://www.ipass4sure.com/study-guides.asp>

View list of All Audio Exams (AE) provided FREE for members;
<http://www.ipass4sure.com/audio-exams.asp>

Download All Exams Sample QAs.
<http://www.ipass4sure.com/samples.asp>

To purchase \$89 Lifetime Full Access Membership click here (One time fee)
<https://www.regnow.com/softsell/nph-softsell.cgi?item=30820-3>

3COM	CompTIA	Filemaker	IBM	LPI	OMG	Sun
ADOBE	ComputerAssociates	Fortinet	IISFA	McAfee	Oracle	Sybase
APC	CWNP	Foundry	Intel	McData	PMI	Symantec
Apple	DELL	Fujitsu	ISACA	Microsoft	Polycom	TeraData
BEA	ECCouncil	GuidanceSoftware	ISC2	Mile2	RedHat	TIA
BICSI	EMC	HDI	ISEB	NetworkAppliance	Sair	Tibco
CheckPoint	Enterasys	Hitachi	ISM	Network-General	SASInstitute	TruSecure
Cisco	ExamExpress	HP	Juniper	Nokia	SCP	Veritas
Citrix	Exin	Huawei	Legato	Nortel	See-Beyond	Vmware
CIW	ExtremeNetworks	Hyperion	Lotus	Novell	SNIA	

and many others.. See complete list Here

