

# 98-349

## Microsoft

### *Windows Operating System Fundamentals*

The 98-349 practice exam is written and formatted by Certified Senior IT Professionals working in today's prospering companies and data centers all over the world! The 98-349 Practice Test covers all the exam topics and objectives and will prepare you for success quickly and efficiently. The 98-349 exam is very challenging, but with our 98-349 questions and answers practice exam, you can feel confident in obtaining your success on the 98-349 exam on your FIRST TRY!

#### Microsoft 98-349 Exam Features

- Detailed questions and answers for 98-349 exam
- Try a demo before buying any Microsoft exam
- 98-349 questions and answers, updated regularly
- Verified 98-349 answers by Experts and bear almost 100% accuracy
- 98-349 tested and verified before publishing
- 98-349 exam questions with exhibits
- 98-349 same questions as real exam with multiple choice options

Acquiring Microsoft certifications are becoming a huge task in the field of I.T. More over these exams like 98-349 exam are now continuously updating and accepting this challenge is itself a task. This 98-349 test is an important part of Microsoft certifications. We have the resources to prepare you for this. The 98-349 exam is essential and core part of Microsoft certifications and once you clear the exam you will be able to solve the real life problems yourself. Want to take advantage of the Real 98-349 Test and save time and money while developing your skills to pass your Microsoft 98-349 Exam? Let us help you climb that ladder of success and pass your 98-349 now!

**QUESTION: 1**

Which of the following are the basic elements of the Windows Media Player interface? Each correct answer represents a complete solution. Choose all that apply.

- A. List pane
- B. Navigation pane
- C. Address bar
- D. Menu bar

**Answer:** C, B, A

**Explanation:**

The five basic elements of the Windows Media Player interface are as follows:

1.Address bar: The Address bar contains a breadcrumb trail that helps a user find his current place in the library. Below the address bar is a toolbar whose content change depending on the current selection. At the right of the toolbar is a search box.

2.Navigation pane: The Navigation pane is used to choose any major node in the media library, select removable media, such as CDs and DVDs, work with portable devices, and view any libraries that are available over the network.

3.Details pane: The contents of the Details pane change, depending on the type of content that is selected from the library and which view is applied.

4.List pane: The List pane displays the content of the current playlist when the Play tab is selected. The Burn and Sync tabs allow a user to create or edit a list of tracks to be burned to a CD (or DVD) or transferred to a compatible portable device, respectively. An info box above the list shows album art for the current track.

5.Playback controls: Playback controls manage playback of audio and video files, using DVD-style controls to play, pause, fast-forward, and rewind files; this area also includes a variety of special- purpose buttons that control volume and the appearance of the Player. If a file is playing, details appear to the left of the controls. The button to the right of the playback controls allows a user to quickly switch from Library view to Now Playing view.

**QUESTION: 2**

You work as a Network Administrator for www.company.com Inc. The computers on the network run Windows 7. You want to run the applications that run only on Windows XP. Which of the following options will you choose to accomplish the task?

- A. Set two PCs at each desk and teller window configured with a keyboard-video-mouse (KVM) switch. One PC would run Windows 7 and the supported applications, and the other would run Windows XP and the older applications.
- B. Set a centralized PC running Windows XP with all necessary applications installed. Each user can sign up to use the machine to complete their work.
- C. Configure each Windows 7 PC with Windows XP Mode and install the older applications in XP Mode.

D. Use Windows Deployment Services (WDS) to perform multiple installations simultaneously.

**Answer:** C

**Explanation:**

Windows XP Mode helps a user run programs designed for Windows XP on computers running Windows 7 Professional, Windows 7 Enterprise, or Windows 7 Ultimate. The user can run applications for Windows XP directly from the Windows 7 desktop.

**QUESTION: 3**

Which of the following are the various types of MMC User modes? Each correct answer represents a complete solution. Choose all that apply.

- A. User Mode (Limited Access, Multiple Window)
- B. User Mode (Full Access)
- C. User Mode (Single Window)
- D. User Mode (Limited Access, Single Window)

**Answer:** B, A, D

**Explanation:**

The various types of MMC User modes are as follows:

1. User Mode (Full Access): In this user mode, users have full access to the console tree and can open new windows, using the New Window From Here or Window, New Window command.
2. User Mode (Limited Access, Multiple Window): In this mode, users have access only to parts of the console tree that are visible. Users can open new windows with the New Window from Here command, but the New Window command does not appear on the Window menu.
3. User Mode (Limited Access, Single Window): In this most restrictive mode, users have access only to parts of the console tree that are visible. MMC operates in single-window mode. Users cannot open new document windows, nor can they resize the single document window.

**QUESTION: 4**

Rick has a laptop that runs Windows 7 Home Premium. He wants to upgrade it to another edition of Windows 7. He decides to use Windows Anytime Upgrade. To which of the following editions can he upgrade? Each correct answer represents a complete solution. Choose two.

- A. Starter
- B. Home Basic

- C. Professional
- D. Ultimate

**Answer:** D, C

**Explanation:**

Windows 7 Premium edition can be upgraded to Windows 7 Ultimate or Windows 7 Professional editions only. Rick can use WAU for upgrading his current upgrading system. Windows Anytime Upgrade (WAU) for Windows 7 is a Microsoft utility used for upgrading Windows 7 versions by buying a license online. Users can easily upgrade Windows 7 versions by using this utility. The WindowsAnytimeUpgrade.exe file is stored in the %SystemRoot%\System32 folder. Users can start upgrade by selecting Windows Anytime Upgrade on the Start menu and then following the prompts. Windows 7 will be available in six different editions, but only Home Premium and Professional will be available for retail sale in most countries. The other editions are focused at other markets, such as the developing world or for enterprise use. Answer: A and B are incorrect. Premium edition cannot be upgraded to Starter or Home Basic editions of Windows 7.

**QUESTION: 5**

Which of the following steps will you take to configure automatic updates? Each correct answer represents a part of the solution. Choose all that apply.

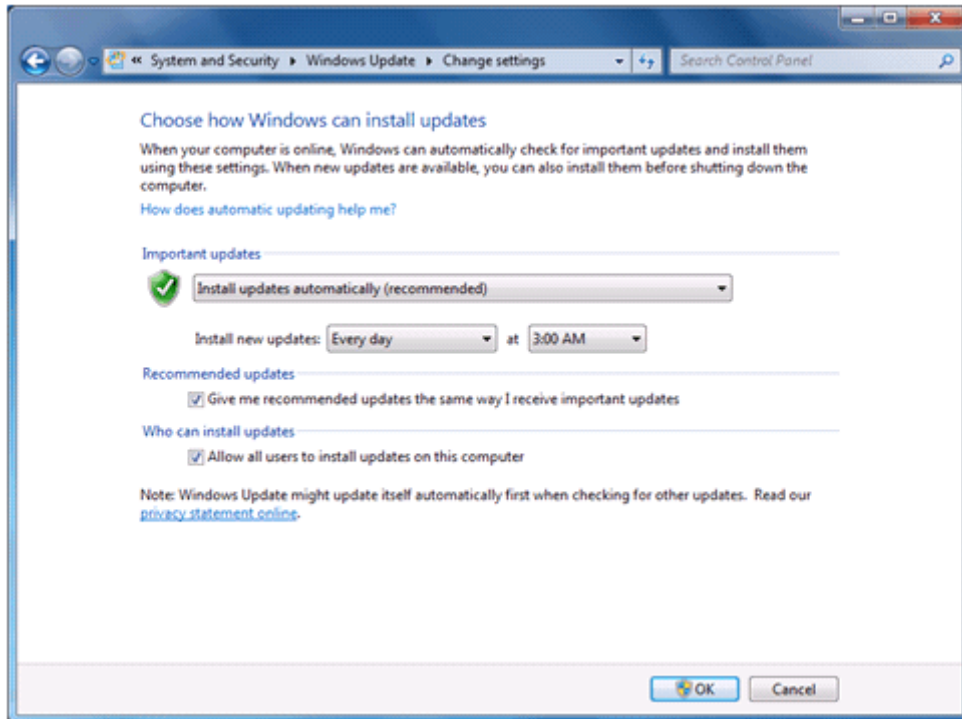
- A. Under Windows Update, click "Turn automatic updating on or off". The Change Settings window opens.
- B. Open the Control Panel and click Add or Remove Program.
- C. Open the Control Panel and click System and Security. (If the Control Panel is not in Category view, click Windows Update, and then click Change settings.)
- D. Configure the update options as needed, and click OK.

**Answer:** C, A, D

**Explanation:**

Take the following steps to configure automatic updates:

1. Open the Control Panel and click System and Security. (If the Control Panel is not in Category view, click Windows Update, and then click Change settings.)
2. Under Windows Update, click "Turn automatic updating on or off". The Change Settings window opens.
3. Configure the update options as needed, and click OK.

**QUESTION: 6**

Joseph works as a Desktop Support Technician for www.company.com Inc. As part of his responsibilities, he has to monitor the performance of computers on a regular basis. He runs Windows Defender on a computer and receives the following warning message: "Windows Defender Definitions haven't been updated".

He wants to resolve this issue and ensure that this message is not displayed. For this, he has to update Windows Defender definition files. What will he do to update the files?

- A. Repair the Microsoft Location Finder program.
- B. Download and install the latest Windows Defender application from the Microsoft website.
- C. Download and install the appropriate files from the Microsoft website.
- D. Restart the Windows Defender.

**Answer: C**

**Explanation:**

In order to resolve the issue, you need to download the latest definition files from the Microsoft Windows Defender website.

**QUESTION: 7**

Fill in the blank with the appropriate word.

\_\_\_\_\_ helps a user access a computer running Windows from another computer running Windows that is connected to the same network or to the Internet.

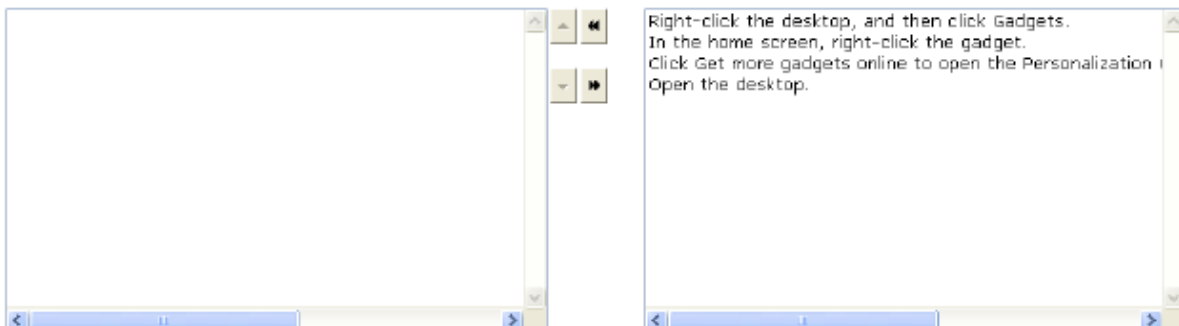
**Answer:** helps

**Explanation:**

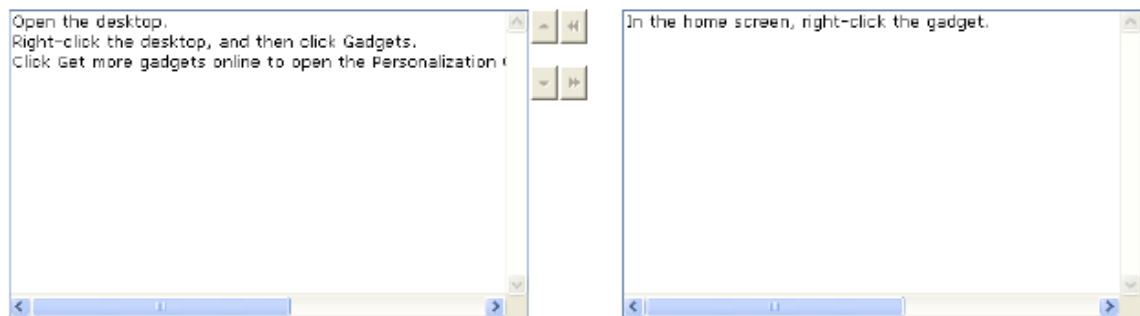
Remote Desktop Connection helps a user access a computer running Windows from another computer running Windows that is connected to the same network or to the Internet. For example, the user can use all of his work computer's programs, files, and network resources from his home computer.

**QUESTION: 8**

Choose and reorder the correct steps to get more gadgets.



**Answer:**



**Explanation:**

Take the following steps to get more gadgets:

1. Open the desktop.
2. Right-click the desktop, and then click Gadgets.
3. Click Get more gadgets online to open the Personalization Gallery on the Windows website.

**QUESTION: 9**

Which of the following network locations is controlled by the network administrator and cannot be selected or changed?

- A. Domain network
- B. Home network
- C. Work network
- D. Public network

**Answer:** A

**Explanation:**

The various types of network location are as follows:

**Home network:** Home networks can be used when people and devices on the network are known. Computers on a home network can belong to a home group. Network discovery is turned on for home networks, which allows a user to see other computers and devices on the network and allows other network users to see the computer. **Work network:** The Work network location can be used for small office or workplace networks. Network discovery, which allows a user to see other computers and devices on a network and allows other network users to see the user's computer, is on by default. The user cannot create or join a homegroup. **Public network:** The Public network location can be used for networks in public places. This location is designed to protect the computer from any malicious software from the Internet. Homegroup is not available on public networks and network discovery is turned off. **Domain network:** The Domain network location is used for domain networks, such as those at enterprise workplaces. This type of network location is controlled by the network administrator and cannot be selected or changed.

**QUESTION: 10**

Fill in the blanks with the appropriate terms.

The \_\_\_\_\_ provides commands specific to the current selection. It also provides an alternative to the action pane. The \_\_\_\_\_ allows a user to choose among alternative ways of presenting information.

**Answer:** Action menu

**Explanation:**

The Action menu provides commands specific to the current selection. It also provides an alternative to the action pane. The View menu allows a user to choose among alternative ways of presenting information. In many MMC consoles, for example, the View menu offers Large Icons, Small Icons, List, and Details commands, similar to the view options in Windows Explorer. The View menu might also include a Customize command.

**QUESTION: 11**

You work as a network administrator for www.company.com Inc. You want to run the Windows 7 operating system on the computers of the organization. Which of the following are basic system requirements for Windows 7? Each correct answer represents a complete solution. Choose all that apply.





## Pass4sure Certification Exam Features;

- Pass4sure offers over **2500** Certification exams for professionals.
- More than **98,800** Satisfied Customers Worldwide.
- Average **99.8%** Success Rate.
- Over **120** Global Certification Vendors Covered.
- Services of **Professional & Certified Experts** available via support.
- Free **90 days** updates to match real exam scenarios.
- **Instant Download Access!** No Setup required.
- Price as low as **\$19**, which is 80% more **cost effective** than others.
- **Verified answers** researched by industry experts.
- Study Material **updated** on regular basis.
- Questions / Answers are downloadable in **PDF** format.
- Mobile Device Supported (**Android, iPhone, iPod, iPad**)
- **No authorization** code required to open exam.
- **Portable** anywhere.
- **Guaranteed Success.**
- **Fast**, helpful support **24x7**.



View list of All certification exams offered;  
<http://www.ipass4sure.com/all exams.asp>

View list of All Study Guides (SG);  
<http://www.ipass4sure.com/study-guides.asp>

View list of All Audio Exams (AE);  
<http://www.ipass4sure.com/audio-exams.asp>

Download Any Certification Exam DEMO.  
<http://www.ipass4sure.com/samples.asp>

To purchase Full version of exam click below;  
<http://www.ipass4sure.com/all exams.asp>

3COM	CompTIA	Filemaker	IBM	LPI	OMG	Sun
ADOBE	ComputerAssociates	Fortinet	IISFA	McAfee	Oracle	Sybase
APC	CWNP	Foundry	Intel	McData	PMI	Symantec
Apple	DELL	Fujitsu	ISACA	Microsoft	Polycom	TeraData
BEA	ECCouncil	GuidanceSoftware	ISC2	Mile2	RedHat	TIA
BICSI	EMC	HDI	ISEB	NetworkAppliance	Sair	Tibco
CheckPoint	Enterasys	Hitachi	ISM	Network-General	SASInstitute	TruSecure
Cisco	ExamExpress	HP	Juniper	Nokia	SCP	Veritas
Citrix	Exin	Huawei	Legato	Nortel	See-Beyond	Vmware
CIW	ExtremeNetworks	Hyperion	Lotus	Novell	Google	

and many others.. See complete list [Here](#)

