

C9550-273

IBM

IBM Business Process Manager Advanced V8.0, Integration Development

The C9550-273 practice exam is written and formatted by Certified Senior IT Professionals working in today's prospering companies and data centers all over the world! The C9550-273 Practice Test covers all the exam topics and objectives and will prepare you for success quickly and efficiently. The C9550-273 exam is very challenging, but with our C9550-273 questions and answers practice exam, you can feel confident in obtaining your success on the C9550-273 exam on your FIRST TRY!

IBM C9550-273 Exam Features

- Detailed questions and answers for C9550-273 exam
- Try a demo before buying any IBM exam
- C9550-273 questions and answers, updated regularly
- Verified C9550-273 answers by Experts and bear almost 100% accuracy
- C9550-273 tested and verified before publishing
- C9550-273 exam questions with exhibits
- C9550-273 same questions as real exam with multiple choice options

Acquiring IBM certifications are becoming a huge task in the field of I.T. More over these exams like C9550-273 exam are now continuously updating and accepting this challenge is itself a task. This C9550-273 test is an important part of IBM certifications. We have the resources to prepare you for this. The C9550-273 exam is essential and core part of IBM certifications and once you clear the exam you will be able to solve the real life problems yourself. Want to take advantage of the Real C9550-273 Test and save time and money while developing your skills to pass your IBM C9550-273 Exam? Let us help you climb that ladder of success and pass your C9550-273 now!

QUESTION: 1

An integration developer needs to implement a business process that will read data from one source database and write data to a separate target database. What action should the integration developer take while configuring the WebSphere Adapter for JDBC?

- A. Configure a single inbound adapter to communicate with both databases. The use of an XA data source is optional.
- B. Configure a single outbound adapter to communicate with both databases. An XA data source must be used to manage transactions across both databases.
- C. Configure one outbound adapter to read data from the source and a second outbound adapter to write data to the target. The use of an XA data source is optional.
- D. Configure one inbound adapter to read data from the source and one outbound adapter to write data to the target. An XA data source must be used to manage transactions across both databases.

Answer: C

QUESTION: 2

An integration developer opens a process application in the IBM Integration Designer (IID) workspace. It contains a business data object CandidateData, a business process definition (BPD) CheckCandidateData and there is no integration service or toolkit dependency associated with this process application. Which artifacts related to the process application will the integration developer see in advanced mode when the process application is imported in the IID workspace? The CheckCandidateData BPD under:

- A. Processes and a business object under Data, and no generated interfaces.
- B. Processes, automatically generated interfaces under Interfaces, and a business object under Data.
- C. Processes, automatically generated interfaces under Interfaces, a business object under Data, and an unimplemented integration service under Advanced Integration Services.
- D. Integration Logic, automatically generated interfaces under Interfaces, and a business object under Data.

Answer: B

QUESTION: 3

An integration developer is modeling a human interaction and is trying to decide what type of human task to use. What advice should be given to the integration

developer when considering using an in-line human task? The integration developer should select the in-line human task if the task:

- A. needs to call other services.
- B. provides just another service.
- C. needs access to process related information.
- D. will eventually be called as an SCA module in the future.

Answer: C

QUESTION: 4

Because of a client's physical topology, an integration service needs to be deployed to Enterprise Service Bus. An integration developer has created a mediation module for implementing the service integration. Which items can the integration developer use inside of this mediation module to implement the logic?

- A. Long running processes, mediation flows, and dependencies to libraries.
- B. Microflow BPEL processes, mediation flows, and dependencies to libraries.
- C. Mediation flows, dependencies to libraries, Business Rules, and selectors.
- D. Mediation flows, Java implementations, and dependencies to libraries projects.

Answer: D

QUESTION: 5

An integration developer uses the Process Center perspective to connect to a repository. The Process Center repository contains process applications and toolkits which members of the business development team designed. The integration developer has ProcAppA open in an Integration Designer workspace. In order to run the process application on the repository, the integration developer must: (choose two)

- A. call the invoke operation on the interface.
- B. create a new snapshot of the process application.
- C. create a new SCA component to wrap the AIS service.
- D. create a new import component which implements the interface.
- E. copy the artifacts which were generated in the Integration Designer to the integration solution library.

Answer: A, D

QUESTION: 6

The integration developer needs to enable the Common Event Infrastructure (CEI) on a business process, such that the CEI events are generated only when the business process has completed successfully. Which of the following transaction behavior must the integration developer choose to set on the business process activity? Set a transmission mode of:

- A. synchronous and a transaction setting of "NEW".
- B. asynchronous and a transaction setting of "NEW".
- C. synchronous and a transaction setting of "EXISTING".
- D. asynchronous and a transaction setting of "EXISTING".

Answer: C

QUESTION: 7

An integration developer needs to implement a long-running business process with instances that will handle multiple messages during their lifetimes. The integration developer has created a correlation set with properties to hold process instance data. What is another step the integration developer needs to take to complete the implementation? Associate the:

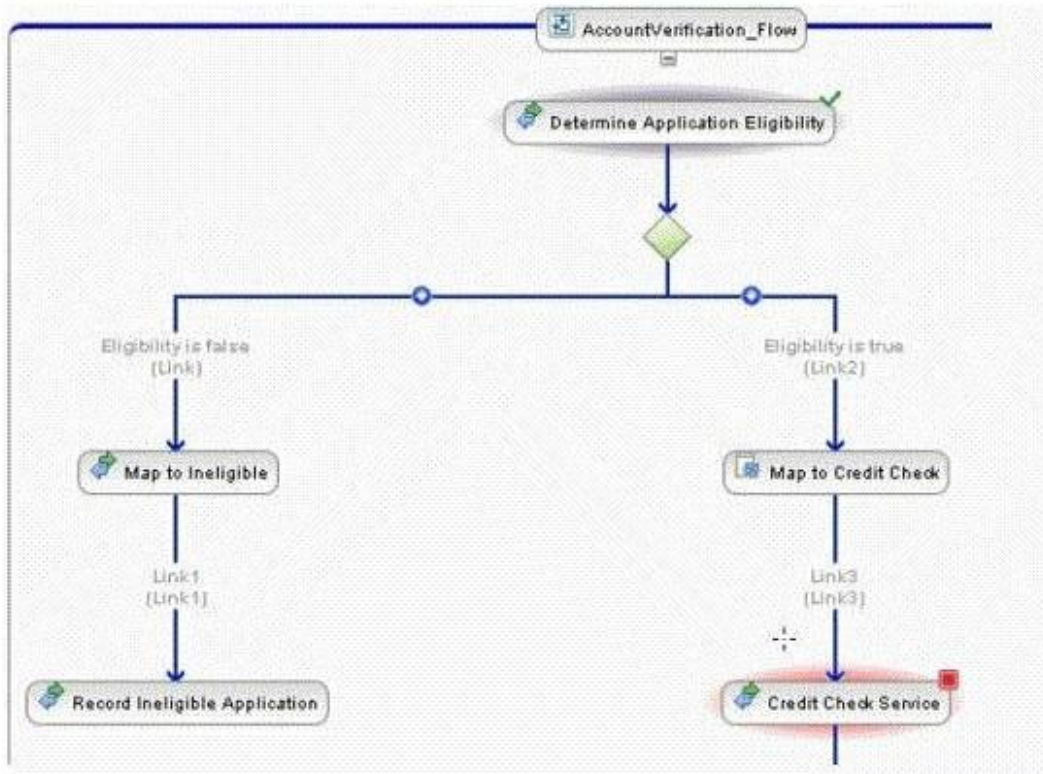
- A. receive activities in the process with the correlation set.
- B. inline human task activities in the process with the correlation set.
- C. correlation set with the appropriate reference partner in the process.
- D. correlation set with the appropriate SCA Import in the Assembly Diagram.

Answer: A

QUESTION: 8

An integration developer needs to analyze a failed activity in an instance in Business Process Choreographer (BPC) Explorer. Exhibit 1 shows the process state for the failed activity.

Exhibit 1:



The process stopped at CreditCheckService because the target service is not available. Because it was not possible to determine the cause of failure at the time, the integration developer decided to forcefully complete the failed activity by manually entering the output data. The integration developer clicks the CreditCheckService activity to see the menu option shown in Exhibit 2.

Exhibit 2:



Which option should the integration developer select to resume and complete the failed activity? Jump to Another Activity to go to another activity, click the next activity as a target activity:



Pass4sure Certification Exam Features;

- Pass4sure offers over **4500** Certification exams for professionals.
- More than **98,800** Satisfied Customers Worldwide.
- Average **99.8%** Success Rate.
- Over **200** Global Certification Vendors Covered.
- Services of **Professional & Certified Experts** available via support.
- Free **90 days** updates to match real exam scenarios.
- **Instant Download Access!** No Setup required.
- Price as low as **\$19**, that is 80% more **cost effective** than others.
- **Verified answers** researched by industry experts.
- Study Material **updated** on regular basis.
- Questions / Answers are downloadable in **PDF** format.
- Mobile Device Supported (**Android, iPhone, iPod, iPad**)
- **No authorization** code required to open exam.
- **Portable** anywhere.
- **Guaranteed Success.**
- **Fast**, helpful support **24x7**.

View list of All certification exams offered;
<http://www.ipass4sure.com/allexams.asp>

View list of All Study Guides (SG);
<http://www.ipass4sure.com/study-guides.asp>

View list of All Audio Exams (AE);
<http://www.ipass4sure.com/audio-exams.asp>

Download Any Certification Exam DEMO.
<http://www.ipass4sure.com/samples.asp>

To purchase Full version of exam click below;
<http://www.ipass4sure.com/allexams.asp>

3COM	CompTIA	Filemaker	IBM	LPI	OMG	Sun
ADOBE	ComputerAssociates	Fortinet	IISFA	McAfee	Oracle	Sybase
APC	CWNP	Foundry	Intel	McData	PMI	Symantec
Apple	DELL	Fujitsu	ISACA	Microsoft	Polycom	TeraData
BEA	ECCouncil	GuidanceSoftware	ISC2	Mile2	RedHat	TIA
BICSI	EMC	HDI	ISEB	NetworkAppliance	Sair	Tibco
CheckPoint	Enterasys	Hitachi	ISM	Network-General	SASInstitute	TruSecure
Cisco	ExamExpress	HP	Juniper	Nokia	SCP	Veritas
Citrix	Exin	Huawei	Legato	Nortel	See-Beyond	Vmware
CIW	ExtremeNetworks	Hyperion	Lotus	Novell	Google	

and many others.. See complete list [Here](#)

