



<http://www.ipass4sure.com>

156-315-71

CheckPoint

Check Point Certified Security Expert R71

<http://www.ipass4sure.com/exams.asp?examcode=156-315-71>

The 156-315-71 practice exam is written and formatted by Certified Senior IT Professionals working in today's prospering companies and data centers all over the world! The 156-315-71 Practice Test covers all the exam topics and objectives and will prepare you for success quickly and efficiently. The 156-315-71 exam is very challenging, but with our 156-315-71 questions and answers practice exam, you can feel confident in obtaining your success on the 156-315-71 exam on your FIRST TRY!

CheckPoint 156-315-71 Exam Features

- Detailed questions and answers for 156-315-71 exam
- Try a demo before buying any CheckPoint exam
- 156-315-71 questions and answers, updated regularly
- Verified 156-315-71 answers by Experts and bear almost 100% accuracy
- 156-315-71 tested and verified before publishing
- 156-315-71 exam questions with exhibits
- 156-315-71 same questions as real exam with multiple choice options

Acquiring CheckPoint certifications are becoming a huge task in the field of I.T. More over these exams like 156-315-71 exam are now continuously updating and accepting this challenge is itself a task. This 156-315-71 test is an important part of CheckPoint certifications. We have the resources to prepare you for this. The 156-315-71 exam is essential and core part of CheckPoint certifications and once you clear the exam you will be able to solve the real life problems yourself. Want to take advantage of the Real 156-315-71 Test and save time and money while developing your skills to pass your CheckPoint 156-315-71 Exam? Let us help you climb that ladder of success and pass your 156-315-71

QUESTION: 1

You need to publish SecurePlatform routes using the ospf routing protocol. What is the correct command structure, once entering the route command, to implement ospf successfully?

- A. Run cpconfig utility to enable ospf routing
- B. ip route ospf ospf network1 ospf network2
- C. Enable Configure terminal Router ospf [id]
Network [network] [wildmask] area [id]
- D. Use DBedit utility to either the objects_5_0.c file

Answer: C

QUESTION: 2

Control connections between the Security Management Server and the Gateway are not encrypted by the VPN Community. How are these connections secured?

- A. They are encrypted and authenticated using SIC.
- B. They are not encrypted, but are authenticated by the Gateway
- C. They are secured by PPTP
- D. They are not secured.

Answer: D

QUESTION: 3

How does a cluster member take over the VIP after a failover event?

- A. Ping the sync interface
- B. if list -renew
- C. Broadcast storm
- D. Gratuitous ARP

Answer: D

QUESTION: 4

You want to verify that your Check Point cluster is working correctly. Which command line tool can you use?

- A. cphaconf state
- B. cphaprob state
- C. cphainfo-s
- D. cphastart -status

Answer: B

QUESTION: 5

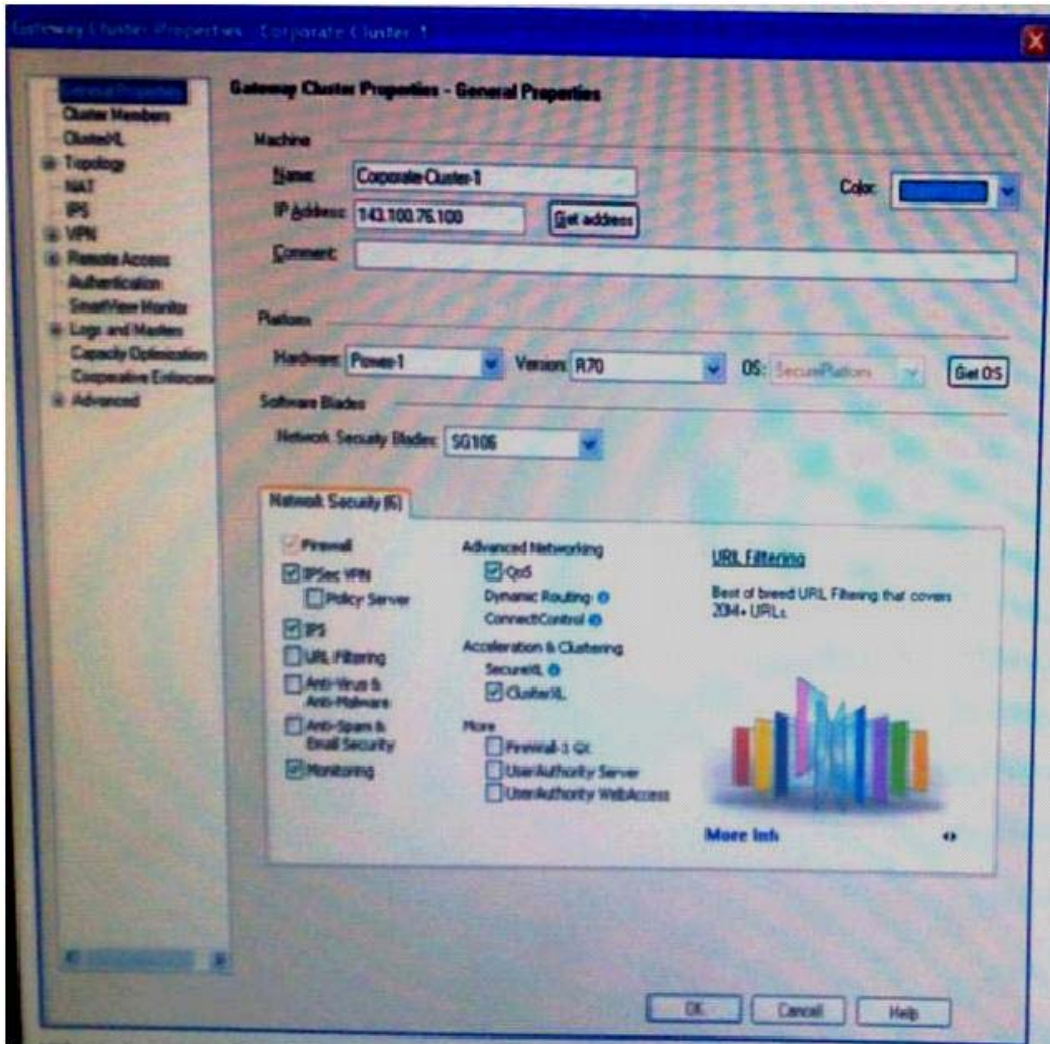
_____ is a proprietary Check Point protocol. it is the basis for Check Point ClusterXL inter- module communication.

- A. RDP
- B. CCP
- C. CKPP
- D. HA OPCODE

Answer: B

QUESTION: 6

John is configuring a new R71 Gateway cluster but he can not configure the cluster as Third Party IP Clustering because this option is not available in Gateway Cluster Properties:



What's happening?

- A. John is not using third party hardware as IP Clustering is part of Check Point's IP Appliance
- B. Third Party Clustering is not available for R71 Security Gateways.
- C. ClusterXL needs to be unselected to permit 3rd party clustering configuration.
- D. John has an invalid ClusterXL license.

Answer: C

QUESTION: 7

You are MegaCorp Security Administrator. This company uses a firewall cluster, consisting of two cluster members. The cluster generally works well but one day you find that the cluster is behaving strangely. You assume that there is a connectivity problem with the cluster

synchronization cluster link (cross-over cable). Which of the following commands is the best for testing the connectivity of the crossover cable?

- A. telnet <IP address of the synchronization interface on the other cluster member>
- B. arping <IP address of the synchronization interface on the other cluster member>
- C. ifconfig -a
- D. Ping <IP address of the synchronization interface on the other cluster member>

Answer: B

QUESTION: 8

Organizations are sometimes faced with the need to locate cluster members in different geographic locations that are distant from each other. A typical example is replicated data centers whose location is widely separated for disaster recovery purposes. What are the restrictions of this solution?

- A. There are no restrictions.
- B. There is one restriction: The synchronization network must guarantee no more than 150 ms latency (ITU Standard G.114).
- C. There is one restriction: The synchronization network must guarantee no more than 100 ms latency.
- D. There are two restrictions: 1. The synchronization network must guarantee no more than 100ms latency and no more than 5% packet loss. 2. The synchronization network may only include switches and hubs.

Answer: D

QUESTION: 9

You are establishing a ClusterXL environment, with the following topology:

VIP internal cluster IP = 172.16.10.3, **VIP external cluster IP** = 192.168.10.3

Cluster Member 1: 4 NICs, 3 enable: hme0: 192.168.10/24, hme1: 10.10.10/24, qfe2: 172.16.10.1/24

Cluster Member 2: 5 NICs, 3 enable: hme0: 192.168.10/24, hme1: 10.10.10/24, qfe2: 172.16.10.1/24

External interfaces 192.168.10.1 and 192.168.10.2 connect to a VLAN switch. The upstream router connects to the same VLAN switch. Internal interfaces 172.16.10.1 and 172.16.10.2 connect to a hub. 10.10.10.0 is the synchronization network. The Security Management Server is located on the internal network with IP 172.16.10.3. What is the problem with this configuration?

- A. There is an IP address conflict
- B. The Security Management Server must be in the dedicated synchronization network, not the internal network.
- C. The Cluster interface names must be identical across all cluster members.
- D. Cluster members cannot use the VLAN switch. They must use hubs.

Answer: B

QUESTION: 10

Refer to Exhibit:

Mode	Configuration
A. Legacy Mode High Availability	1. Every member of the cluster receives all packets sent to the cluster IP address, which the load distributed optimally among all cluster members
B. New Mode High Availability	2. Only one machine is active at any time. A failure of the active machine causes a failover to the next highest priority machine in the cluster.
C. Load Sharing Multicast Mode	3. Provides a clustering mechanism through the use of cloned interface configuration details.
D. Load Sharing Unicast Mode	4. One machine in the cluster receives all traffic from a router, and redistributes the packets to the other machines in the cluster, implementing both load sharing and redundancy

Match the ClusterXL Modes with their configurations

- A. A-3, B-2, C-1, D-4
- B. A-3, B-2, C-4, D-1
- C. A-2, B-3, C-4, D-1
- D. A-2, B-3, C-1, D-4

Answer: C

QUESTION: 11

Check point Clustering protocol, works on:

- A. UDP 8116
- B. UDP 500
- C. TCP 8116
- D. TCP 19864

Answer: A

QUESTION: 12

What command will allow you to disable sync on a cluster firewall member?

- A. fw ctl setsync 0
- B. fw ctl sysnstat stop
- C. fw ctl sysnstat off
- D. fw ctl setsyns off

Answer: D

QUESTION: 13

Which of the following statements about the Port Scanning feature of IPS is TRUE?

- A. The default scan detection is when more than 500 open inactive ports are open for a period of 120 seconds.
- B. The Port Scanning feature actively blocks the scanning, and sends an alert to SmartView Monitor.
- C. Port Scanning does not block scanning; it detects port scans with one of three levels of detection sensitivity.
- D. When a port scan is detected, only a log is issued, never an alert.

Answer: C

QUESTION: 14

Which procedure creates a new administrator in SmartWorkflow?

- A. Run cpconfig, supply the Login Name, Profile Properties, Name, Access Applications and Permissions.
- B. In SmartDashboard, click SmartWorkflow / Enable SmartWorkflow and the Enable SmartWorkflow wizard will start. Supply the Login Name, Profile Properties, Name, Access Applications and Permissions when prompted.
- C. On the Provider-1 primary MDS, run cpconfig, supply the Login Name, Profile Properties, Name, Access Applications and Permissions.
- D. In SmartDashboard, click Users and Administrators right click Administrators / New Administrator and supply the Login Name, Profile Properties, Name, Access Applications and Permissions.



Pass4sure Certification Exam Features;

- Pass4sure offers over **2500** Certification exams for professionals.
- More than **98,800** Satisfied Customers Worldwide.
- Average **99.8%** Success Rate.
- Over **120** Global Certification Vendors Covered.
- Services of **Professional & Certified Experts** available via support.
- Free **90 days** updates to match real exam scenarios.
- **Instant Download Access!** No Setup required.
- Price as low as **\$19**, which is 80% more **cost effective** than others.
- **Verified answers** researched by industry experts.
- Study Material **updated** on regular basis.
- Questions / Answers are downloadable in **PDF** format.
- Mobile Device Supported (**Android, iPhone, iPod, iPad**)
- **No authorization** code required to open exam.
- **Portable** anywhere.
- **Guaranteed Success.**
- **Fast**, helpful support **24x7**.



View list of All certification exams offered;
<http://www.ipass4sure.com/all exams.asp>

View list of All Study Guides (SG);
<http://www.ipass4sure.com/study-guides.asp>

View list of All Audio Exams (AE);
<http://www.ipass4sure.com/audio-exams.asp>

Download Any Certification Exam DEMO.
<http://www.ipass4sure.com/samples.asp>

To purchase Full version of exam click below;
<http://www.ipass4sure.com/all exams.asp>

3COM	CompTIA	Filemaker	IBM	LPI	OMG	Sun
ADOBE	ComputerAssociates	Fortinet	IISFA	McAfee	Oracle	Sybase
APC	CWNP	Foundry	Intel	McData	PMI	Symantec
Apple	DELL	Fujitsu	ISACA	Microsoft	Polycom	TeraData
BEA	ECCouncil	GuidanceSoftware	ISC2	Mile2	RedHat	TIA
BICSI	EMC	HDI	ISEB	NetworkAppliance	Sair	Tibco
CheckPoint	Enterasys	Hitachi	ISM	Network-General	SASInstitute	TruSecure
Cisco	ExamExpress	HP	Juniper	Nokia	SCP	Veritas
Citrix	Exin	Huawei	Legato	Nortel	See-Beyond	Vmware
CIW	ExtremeNetworks	Hyperion	Lotus	Novell	Google	

and many others.. See complete list [Here](#)

