

Examcollection

<http://www.ipass4sure.com/examcollection.htm>



<http://www.ipass4sure.com>

VCPC510

VMware

VMware Certified Professional on vCloud

The VCPC510 practice exam is written and formatted by Certified Senior IT Professionals working in today's prospering companies and data centers all over the world! The VCPC510 Practice Test covers all the exam topics and objectives and will prepare you for success quickly and efficiently. The VCPC510 exam is very challenging, but with our VCPC510 questions and answers practice exam, you can feel confident in obtaining your success on the VCPC510 exam on your FIRST TRY!

VMware VCPC510 Exam Features

- Detailed questions and answers for VCPC510 exam
- Try a demo before buying any VMware exam
- VCPC510 questions and answers, updated regularly
- Verified VCPC510 answers by Experts and bear almost 100% accuracy
- VCPC510 tested and verified before publishing
- VCPC510 exam collection vce questions with exhibits
- VCPC510 same questions as real exam with multiple choice options

Acquiring VMware certifications are becoming a huge task in the field of I.T. More over these exams like VCPC510 exam are now continuously updating and accepting this challenge is itself a task. This VCPC510 test is an important part of VMware certifications. We have the resources to prepare you for this. The VCPC510 exam is essential and core part of VMware certifications and once you clear the exam you will be able to solve the real life problems yourself. Want to take advantage of the Real VCPC510 Test and save time and money while developing your skills to pass your VMware VCPC510 Exam? Let us help you climb that ladder of success and pass your VCPC510 now!

DEMO EXAM

For Full Version visit

<http://www.ipass4sure.com/allexams.asp>

QUESTION: 1

-- Exhibit --

The screenshot shows a configuration window with three tabs: 'Name and Description', 'Network Specification', and 'Syslog Server Settings'. The 'Network Specification' tab is active. It contains the following fields:

- Network mask: 255.255.255.0
- Default gateway: 192.168.20.254
- Primary DNS: (empty)
- Secondary DNS: (empty)
- DNS suffix: (empty)

Below these fields is the 'Static IP pool' section. It includes a text prompt: 'Enter an IP range (format: 192.168.1.2 - 192.168.1.100) of IP address and click Add.' There is an 'Add' button that is disabled (greyed out). Below this, a table lists the current static IP pool:

IP Range	Buttons
192.168.20.1 - 192.168.20.100	Modify, Remove

At the bottom of the table, it says 'Total: 100'. The window has 'OK' and 'Cancel' buttons at the bottom right.

-- Exhibit --

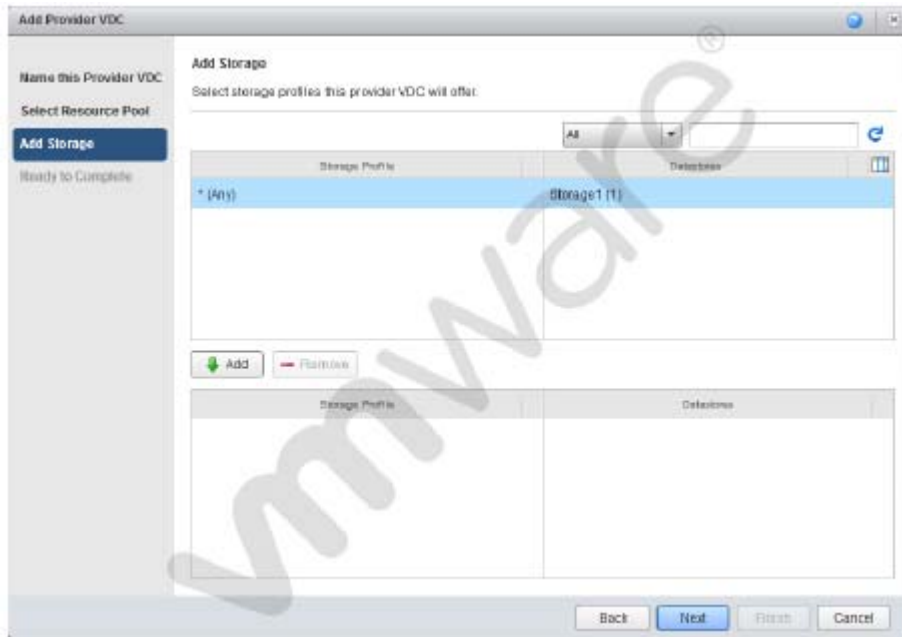
Click the Exhibit button.

An administrator needs to modify the range of static IP addresses available to the network in question. The administrator clicks on the Network Specification tab and is presented the options shown in the exhibit, which cannot be selected. What is a possible cause for this issue?

- A. The administrator does not have the vShield Manager role.
- B. The administrator does not have the organization administrator role.
- C. The vShield Edge appliance has been powered off and is inaccessible.
- D. The network in question is a direct connected external organization network.

Answer: D**QUESTION: 2**

-- Exhibit --



-- Exhibit --

Click the Exhibit button.

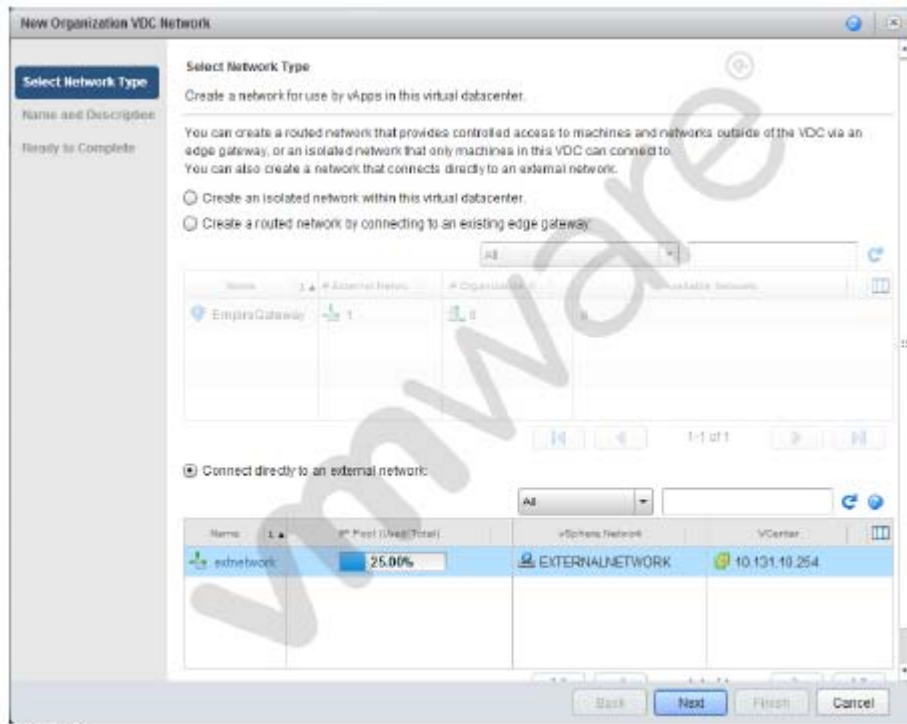
When adding storage in the Provider vDC wizard you don't see the intended Storage Profile. What could be the cause?

- A. The Storage Profile has not been created in vCenter.
- B. The Storage Profile has been named with more than 5 characters.
- C. The Storage Profile is set by the Org vDC wizard
- D. The Provider vDC combines all storage profiles into *(Any)

Answer: A

QUESTION: 3

-- Exhibit --



-- Exhibit --

Click the Exhibit button.

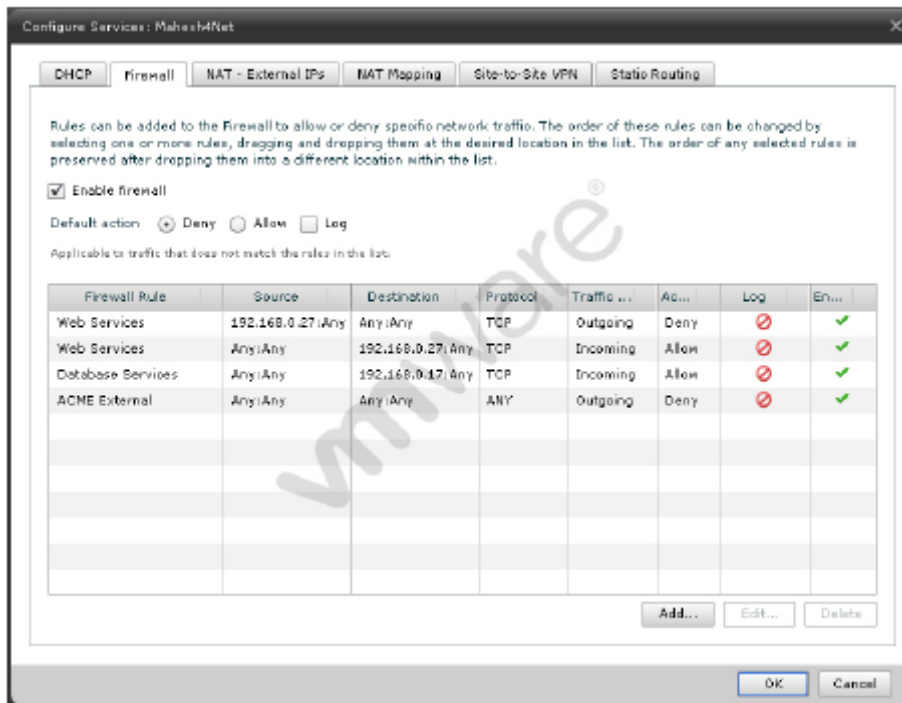
Which External Organization Network type is being created in the Organization Network Creation Wizard?

- A. External port group-backed
- B. External VLAN-backed
- C. External Direct
- D. External Routed

Answer: C

QUESTION: 4

-- Exhibit --



-- Exhibit --

Click the Exhibit button.

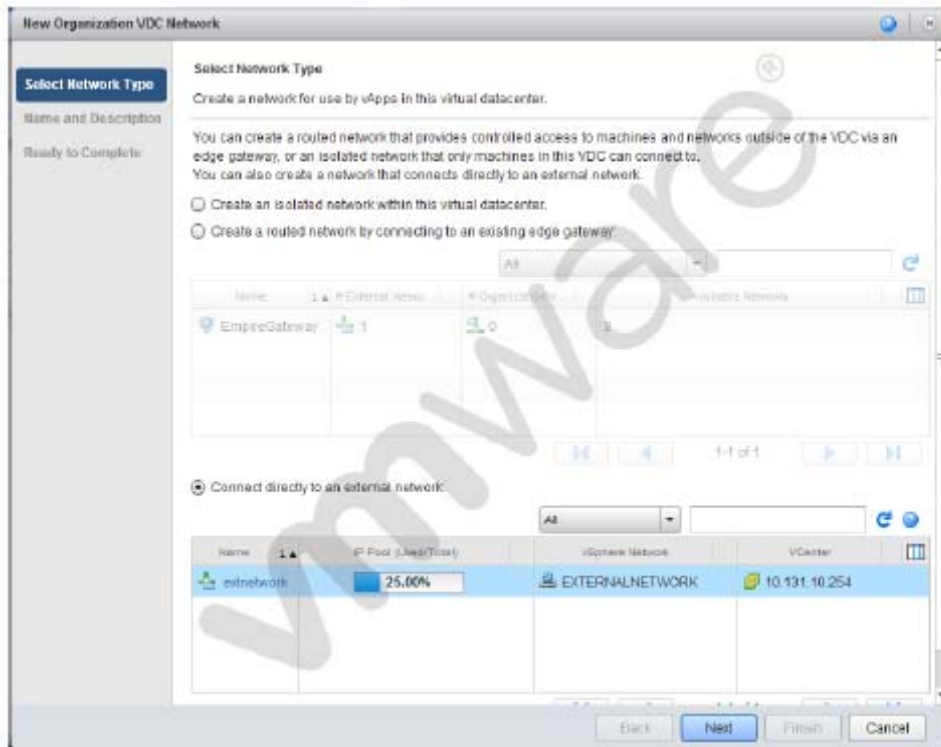
ACME has a virtual machine with an IP address of 192.168.0.51. It is running an SMTP mail service and is unable to communicate from the assigned network. The network is an External Routed network with the firewall rules displayed in the exhibit. Which configuration change would correct this behavior?

- A. Set the Destination IP address to 192.168.0.51.
- B. Disable the Web Services rule for the Incoming Traffic Type.
- C. Change the ACME External rule Traffic Type to Incoming.
- D. Set the ACME External rule to Allow.

Answer: D

QUESTION: 5

-- Exhibit --



-- Exhibit --

Click the Exhibit button.

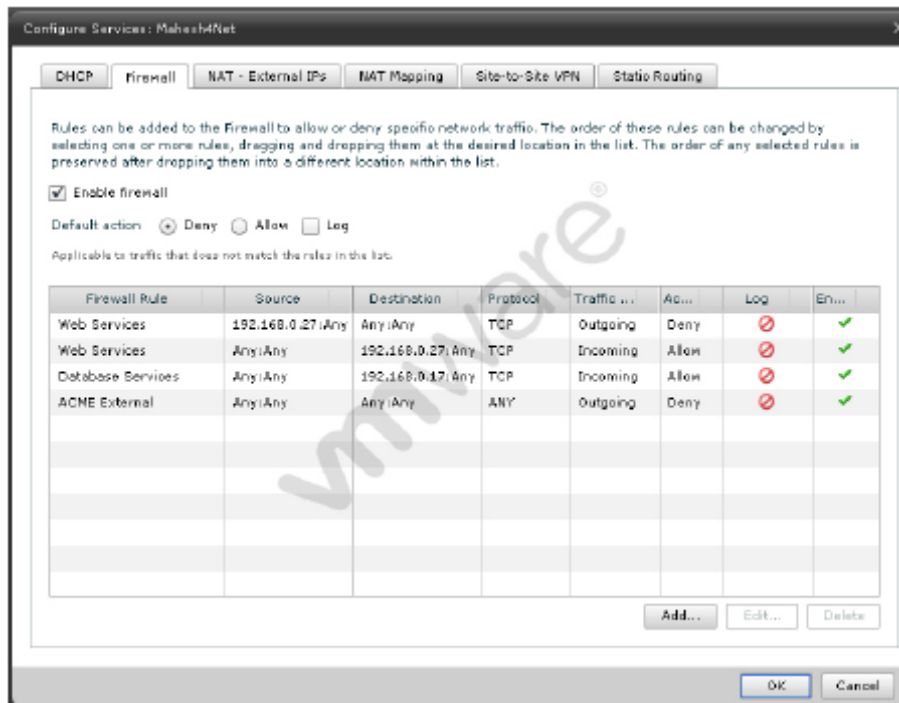
Which External Organization Network type is being created in the Organization Network Creation Wizard?

- A. External port group-backed
- B. External VLAN-backed
- C. External Direct
- D. External Routed

Answer: D

QUESTION: 6

-- Exhibit --



-- Exhibit --

Click the Exhibit button.

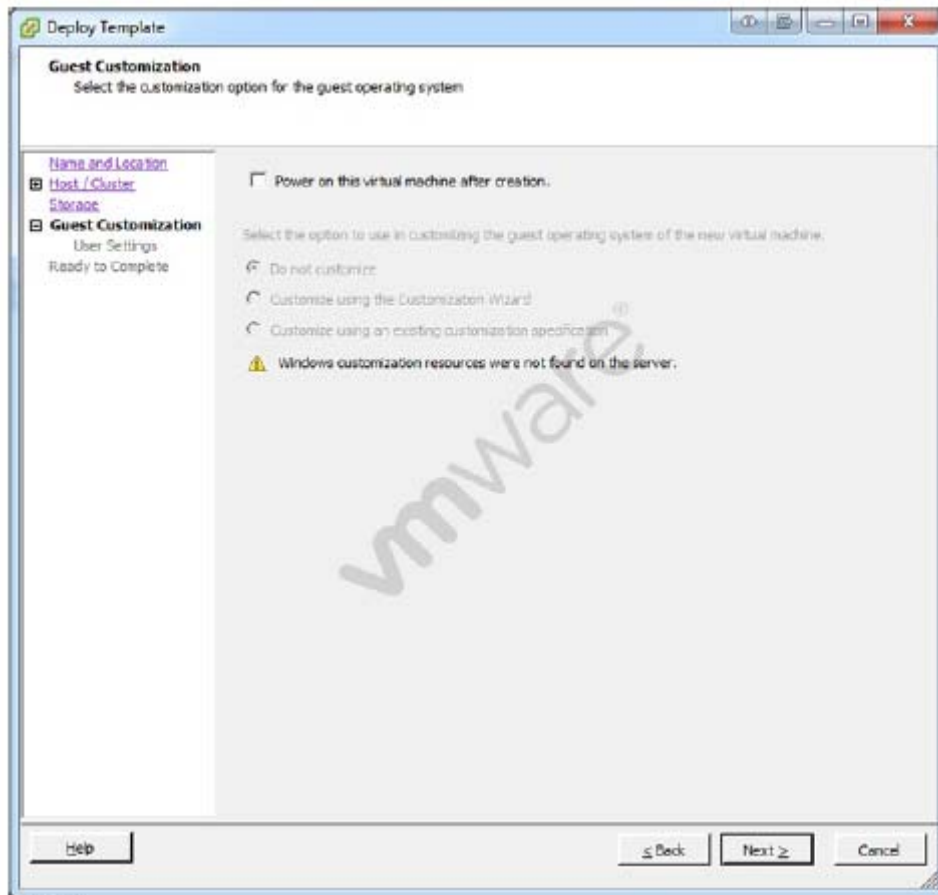
ACME has a Web Server virtual machine with an IP Address of 192.168.0.27. It is not responding to incoming customer requests on either internal or external networks. The network is an External Routed network with the firewall rules displayed in the exhibit. Which configuration change would correct this behavior?

- A. Change the Outgoing Web Services rule to Allow.
- B. Change the IP Address of the Incoming Web Services rule to 192.168.0.17
- C. Change the IP Address of the Web Services Source to 192.168.0.17
- D. Delete the Outgoing Web Services rule.

Answer: A

QUESTION: 7

-- Exhibit --



-- Exhibit --

Click the Exhibit button.

An administrator has implemented a new vSphere 5 environment and is deploying their first Windows 2008 R2 template. When running the Deploy Template wizard, the error shown in the exhibit appears. What can be done to correct the problem?

- A. Select the correct guest OS setting for the virtual machine.
- B. Windows 2003 x64 cannot be customized.
- C. Download and install the Microsoft Sysprep tool into the virtual machine to be customized.
- D. Download the Microsoft Sysprep tool to the appropriate vCenter Server directory.

Answer: A

QUESTION: 8

Your Cloud Administrator has asked you to deploy an Edge Gateway that will serve as a primary gateway for multiple Org vDC Networks. It has been decided that the size of the Edge Gateway will be Full. When the Edge Gateway is deployed, what is the correct number cpus, memory, and cpu shares that will be automatically allocated?

- A. 1 cpu(s) with 1000 Shares and 256MB of memory.
- B. 2 cpu(s) with 1000 Shares and 512MB of memory.
- C. 2 cpu(s) with 2000 Shares and 1024MB of memory.
- D. 1 cpu(s) with 2000 Shares and 256MB of memory.

Answer: C

QUESTION: 9

-- Exhibit --

Leases

Specify the maximum time that vApps and vApp templates can run and be stored in this organization's vDC(s).

vApp leases:

Maximum runtime lease: 7 Days

How long vApps can run before they are automatically stopped.

Maximum storage lease: 90 Days

How long stopped vApps are available before being automatically cleaned up.

Storage cleanup: Move to Expired Items

-- Exhibit --

Click the Exhibit button.

How long will VMs deployed in an organization with the indicated settings reside on storage?

- A. Until powered off
- B. Indefinitely
- C. Three months
- D. One week

Answer: B



Pass4sure Certification Exam Features;

- Pass4sure offers over **4500** Certification exams for professionals.
- More than **98,800** Satisfied Customers Worldwide.
- Average **99.8%** Success Rate.
- Over **150** Global Certification Vendors Covered.
- Services of **Professional & Certified Experts** available via support.
- Free **90 days** updates to match real exam scenarios.
- **Instant Download Access!** No Setup required.
- Price as low as **\$19**, which is 80% more **cost effective** than others.
- **Verified answers** researched by industry experts.
- Study Material **updated** on regular basis.
- Questions / Answers are downloadable in **PDF** format.
- Mobile Device Supported (**Android, iPhone, iPod, iPad**)
- **No authorization** code required to open exam.
- **Portable** anywhere.
- **Guaranteed Success.**
- **Fast**, helpful support **24x7**.

View list of All certification exams offered;
<http://www.ipass4sure.com/allexams.asp>

View list of All Study Guides (SG);
<http://www.ipass4sure.com/study-guides.asp>

View list of All Audio Exams (AE);
<http://www.ipass4sure.com/audio-exams.asp>

Download Any Certification Exam DEMO.
<http://www.ipass4sure.com/samples.asp>

To purchase Full version of exam click below;
<http://www.ipass4sure.com/allexams.asp>

3COM	CompTIA	Filemaker	IBM	LPI	OMG	Sun
ADOBE	ComputerAssociates	Fortinet	IISFA	McAfee	Oracle	Sybase
APC	CWNP	Foundry	Intel	McData	PMI	Symantec
Apple	DELL	Fujitsu	ISACA	Microsoft	Polycom	TeraData
BEA	ECCouncil	GuidanceSoftware	ISC2	Mile2	RedHat	TIA
BICSI	EMC	HDI	ISEB	NetworkAppliance	Sair	Tibco
CheckPoint	Enterasys	Hitachi	ISM	Network-General	SASInstitute	TruSecure
Cisco	ExamExpress	HP	Juniper	Nokia	SCP	Veritas
Citrix	Exin	Huawei	Legato	Nortel	See-Beyond	Vmware
CIW	ExtremeNetworks	Hyperion	Lotus	Novell	Google	

and many others.. See complete list [Here](#)

