

Examcollection

<http://www.ipass4sure.com/examcollection.htm>



<http://www.ipass4sure.com>

VCP-310

Vmware

VMware Certified Professional on VI3

<http://www.ipass4sure.com/exams.asp?examcode=VCP-310>

The VCP-310 practice exam is written and formatted by Certified Senior IT Professionals working in today's prospering companies and data centers all over the world! The VCP-310 Practice Test covers all the exam topics and objectives and will prepare you for success quickly and efficiently. The VCP-310 exam is very challenging, but with our VCP-310 questions and answers practice exam, you can feel confident in obtaining your success on the VCP-310 exam on your FIRST TRY!

Vmware VCP-310 Exam Features

- Detailed questions and answers for VCP-310 exam
- Try a demo before buying any Vmware exam
- VCP-310 questions and answers, updated regularly
- Verified VCP-310 answers by Experts and bear almost 100% accuracy
- VCP-310 tested and verified before publishing
- VCP-310 examcollection vce questions with exhibits
- VCP-310 same questions as real exam with multiple choice options

Acquiring Vmware certifications are becoming a huge task in the field of I.T. More over these exams like VCP-310 exam are now continuously updating and accepting this challenge is itself a task. This VCP-310 test is an important part of Vmware certifications. We have the resources to prepare you for this. The VCP-310 exam is essential and core part of Vmware certifications and once you clear the exam you will be able to solve the real life problems yourself. Want to take advantage of the Real VCP-310 Test and save time and money while developing your skills to pass your Vmware VCP-310 Exam? Let us help you climb that ladder of success and pass your VCP-310 now!

DEMO EXAM

For Full Version visit

<http://www.ipass4sure.com/allexams.asp>

Question: 1

Which three statements are true about sharing storage capabilities on NFS volumes supported by ESX server? Select three.

- A. You can use VMotion
- B. You can create VMFS datastore on NFS mounted volumes.
- C. You can create virtual machines on NFS mounted volumes.
- D. You can boot virtual machines stored on NFS mounted volumes.
- E. You can configure ESX Server to boot from NFS mounted volumes.

Answer: A, C, D

Question: 2

Which statement is true about VirtualCenter and License Server?

- A. VirtualCenter cannot be installed without an operational License Server online.
- B. If deploying a License Server is not desirable, VirtualCenter can be installed using a host-based license file.
- C. The License Server must be installed during VirtualCenter installation and must always run on the same server as VirtualCenter.
- D. The License Server may be installed on a separate machine, but VirtualCenter requires a server-based license.

Answer: D

Explanation:

Per VC User Manual. -

VirtualCenter server - Requires one license for each VirtualCenter Server.

VirtualCenter Server licenses are perpetual. A license key is requested the first time

VirtualCenter client connects to the VirtualCenter server, not during installation.

Question: 3

ESX 3.0 Server supports access to _____ LUNs during the initial installation process.

- A. 32
- B. 64
- C. 128
- D. 255
- E. 256

Answer: C

Question: 4

What is the minimum supported hardware requirement to run a VirtualCenter server?

- A. 512 MB RAM unless running a database server on the same machine.
- B. 2 GHz CPU
- C. 150 MB free disk space
- D. At least one Gigabit Ethernet adapter.

Answer: B

Explanation:

2 GHz CPU - The only correct answer according to VirtualCenter 2.0 User Manual.

Question: 5

Which two situations will result in VMware restarting virtual machines? Select two.

- A. A guest OS fails.
- B. An ESX Server in the cluster becomes isolated from the network.
- C. An ESX Server in the cluster is manually powered off.
- D. An ESX Server in the cluster is put into Maintenance mode.

Answer: B, C

Explanation:

Per VI# ESX Resource Mgmt Guide -

A cluster pools a set of hosts. If DRS is enabled, the cluster supports shared resource pools and performs placement and dynamic load balancing for virtual machines.

If HA is enabled, the cluster supports failover. When a host fails, all associated virtual machines are restarted on different hosts.

ESX considers an Isolated host as failed after 14 seconds of receiving no heartbeats. The isolated host shuts down its VMs so that the other

Question: 6

What is the maximum virtual disk size on a VMFS-3 volume?

- A. 512 GB
- B. 1 TB
- C. 2 TB
- D. 3.6 TB

Answer: C

Question: 7

During the installation of ESX Server, you decide to manually define the partitioning scheme. Which two are recommended minimum partition sizes? Select two.

- A. /boot = 512 MB
- B. Swap = 544 MB
- C. / = 2500 MB
- D. /usr = 2048 MB
- E. /etc = 1500 MB

Answer: B, C

Question: 8

What are three requirements for a VMware HA cluster? Select three

- A. Name resolution between all hosts
- B. Identical type and quantity of CPUs in each host
- C. Access to shared storage from all hosts
- D. Access to the virtual machine networks from all hosts
- E. Private Gigabit Ethernet network for all hosts.

Answer: A, C, D

Explanation:

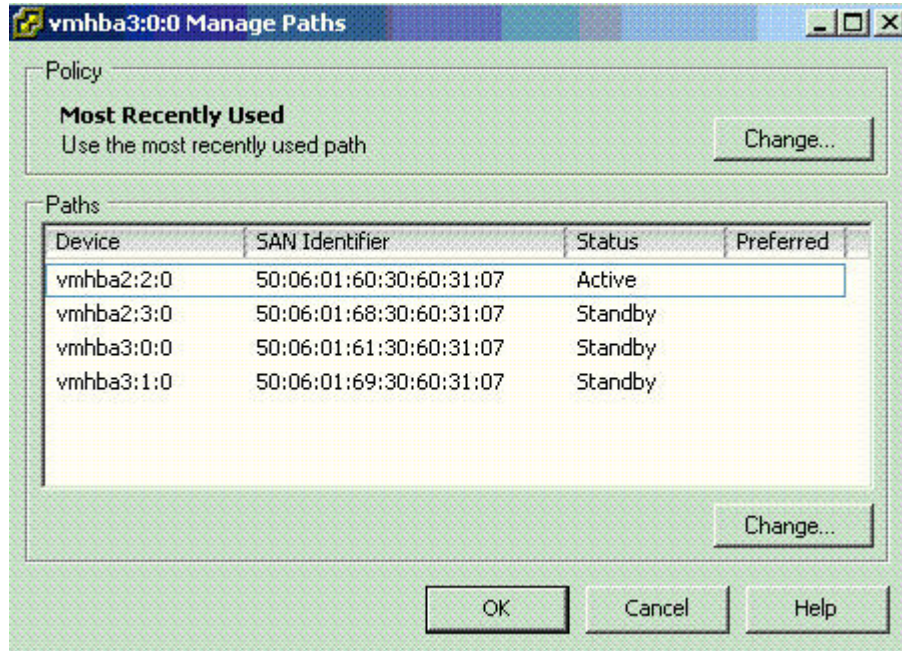
Clusters Enabled for HA

For clusters enabled for HA, all virtual machines and their configuration files must reside on shared storage (typically a SAN), because you must be able to power on the virtual machine on any host in the cluster. This also means that the hosts must be configured to have access to the same virtual machine network and to other resources.

Each host in an HA cluster must be able to resolve the host name and IP address of all other hosts in the cluster. To achieve this, you can either set up DNS on each host (preferred) or fill in the /etc/hosts entries manually (error prone and discouraged).

Question: 9

Exhibit:



Given the information shown in the exhibit, which three statements are true? (Choose three.)

Note: This server has not been modified from the default configuration.

- A. HBA Failover occurred.
- B. LUN has four paths.
- C. LUN is on an Active/Active array.
- D. Preferred Path is vmhba2:2:0.
- E. LUN is on an Active/Passive array.

Answer: A, B, E

Question: 10

How does ESX Server 3.x differ from VMware Server 1.x?

- A. ESX Server 3.x supports multiple processors in a virtual machine and VMware Server 1.x does not.
- B. ESX Server 3.x supports Intranet and application servers in a production environment and VMware Server 1.x does not.
- C. ESX Server 3.x manages the virtualization server application remotely through a web-based interface and VMware Server 1.x does not.
- D. ESX Server 3.x supports virtual switches with VLAN capabilities and VMware Server 1.x does not.

E. ESX Server 3.x runs on top of Linux and VMware Server 1.x does not.

Answer: D

Explanation:

VMware Server does not support VLAN
Not A: VMware Server also supports SMP

Question: 11

Which is a valid traffic shaping adjustment?

- A. Average bandwidth adjusted in Kbps.
- B. Average bandwidth adjusted in Mbps.
- C. Maximum bandwidth adjusted in Kbps.
- D. Maximum bandwidth adjusted in Mbps.
- E. Burst bandwidth adjusted in Kbps

Answer: A

Explanation:

Only answer "Average bandwidth adjusted in Kbps" is correct. The other options in the configuration window are "Peak bandwidth" and "Burst size" which are not identical to any of the possible answers. This information can be found in the Server Configuration Guide, Page 56.

Question: 12

You work as an administrator at Company.com. Company.com decides to use a license server for a newly installed Virtual Infrastructure. The infrastructure consists of one VirtualCenter server and two ESX Server hosts, each with two dual core CPUs.

DRS, VMware HA and VMotion will be used on all hosts.

How many license files need to be installed on the license server?

- A. 0
- B. 1
- C. 2
- D. 3
- E. 4
- F. 5
- G. 6
- H. 7
- I. 13
- J. 25

Answer: B

Explanation:

This is a Trick question. Although 17 separate licenses need to be purchased from VMware (one for the VC server, and four for each of the other four categories), the key phrase is: "How many license files need to be installed on the license server". A license server only ever has one license file.

Quick Start Guide: In license server-based licensing mode, a single license file is stored centrally on a license server, which makes these licenses available to one or more hosts.

Installation & Upgrade Guide:

Server-based license files configured through the VI Client are placed at the following location on the machine running the VMware license server: C:\Program Files\VMware\VMware License



Pass4sure Certification Exam Features;

- Pass4sure offers over **2500** Certification exams for professionals.
- More than **98,800** Satisfied Customers Worldwide.
- Average **99.8%** Success Rate.
- Over **120** Global Certification Vendors Covered.
- Services of **Professional & Certified Experts** available via support.
- Free **90 days** updates to match real exam scenarios.
- **Instant Download Access!** No Setup required.
- Price as low as **\$19**, which is 80% more **cost effective** than others.
- **Verified answers** researched by industry experts.
- Study Material **updated** on regular basis.
- Questions / Answers are downloadable in **PDF** format.
- Mobile Device Supported (**Android, iPhone, iPod, iPad**)
- **No authorization** code required to open exam.
- **Portable** anywhere.
- **Guaranteed Success.**
- **Fast**, helpful support **24x7**.



View list of All certification exams offered;
<http://www.ipass4sure.com/all exams.asp>

View list of All Study Guides (SG);
<http://www.ipass4sure.com/study-guides.asp>

View list of All Audio Exams (AE);
<http://www.ipass4sure.com/audio-exams.asp>

Download Any Certification Exam DEMO.
<http://www.ipass4sure.com/samples.asp>

To purchase Full version of exam click below;
<http://www.ipass4sure.com/all exams.asp>

| | | | | | | |
|------------|--------------------|------------------|---------|------------------|--------------|-----------|
| 3COM | CompTIA | Filemaker | IBM | LPI | OMG | Sun |
| ADOBE | ComputerAssociates | Fortinet | IISFA | McAfee | Oracle | Sybase |
| APC | CWNP | Foundry | Intel | McData | PMI | Symantec |
| Apple | DELL | Fujitsu | ISACA | Microsoft | Polycom | TeraData |
| BEA | ECCouncil | GuidanceSoftware | ISC2 | Mile2 | RedHat | TIA |
| BICSI | EMC | HDI | ISEB | NetworkAppliance | Sair | Tibco |
| CheckPoint | Enterasys | Hitachi | ISM | Network-General | SASInstitute | TruSecure |
| Cisco | ExamExpress | HP | Juniper | Nokia | SCP | Veritas |
| Citrix | Exin | Huawei | Legato | Nortel | See-Beyond | Vmware |
| CIW | ExtremeNetworks | Hyperion | Lotus | Novell | Google | |

and many others.. See complete list [Here](#)

