

Examcollection

<http://www.ipass4sure.com/examcollection.htm>

SPS-200

IBM

IBM SPSS MPRO - IBM SPSS Modeler Professional

<http://www.ipass4sure.com/exams.asp?examcode=SPS-200>

The SPS-200 practice exam is written and formatted by Certified Senior IT Professionals working in today's prospering companies and data centers all over the world! The SPS-200 Practice Test covers all the exam topics and objectives and will prepare you for success quickly and efficiently. The SPS-200 exam is very challenging, but with our SPS-200 questions and answers practice exam, you can feel confident in obtaining your success on the SPS-200 exam on your FIRST TRY!

IBM SPS-200 Exam Features

- Detailed questions and answers for SPS-200 exam
- Try a demo before buying any IBM exam
- SPS-200 questions and answers, updated regularly
- Verified SPS-200 answers by Experts and bear almost 100% accuracy
- SPS-200 tested and verified before publishing
- SPS-200 examcollection vce questions with exhibits
- SPS-200 same questions as real exam with multiple choice options

Acquiring IBM certifications are becoming a huge task in the field of I.T. More over these exams like SPS-200 exam are now continuously updating and accepting this challenge is itself a task. This SPS-200 test is an important part of IBM certifications. We have the resources to prepare you for this. The SPS-200 exam is essential and core part of IBM certifications and once you clear the exam you will be able to solve the real life problems yourself. Want to take advantage of the Real SPS-200 Test and save time and money while developing your skills to pass your IBM SPS-200 Exam? Let us help you climb that ladder of success and pass your SPS-200 now!

DEMO EXAM

For Full Version visit

<http://www.ipass4sure.com/allexams.asp>

Exam Name:	IBMSPSSMPRO: IBM SPSS Modeler Professional		
Exam Type:	IBM	Exam Code:	SPS-200
Certification	IBM Certified Specialist	Total Questions:	73

Question: 1

Which key items must be identified before a data mining project is started? (Select all that apply)

- A. A business problem or question
- B. Data quality problem
- C. Available data
- D. Available expertise on the data and business

Answer: A, B

Question: 2

Given the following Output Table to create a select node which includes vehicles from both groups A and B, click on A and on B (as shown) and select from the menu.

	Policyholder age	Vehicle group	Vehicle age	Average cost of claims	Number of claims
1	17-20	A	0-3	289	8
2	17-20	A	4-7	282	6
3	17-20	A	8-9	133	4
4	17-20	A	10+	160	1
5	17-20	B	0-3	372	10
6	17-20	B	4-7	249	20
7	17-20	B	8-9	380	1
8	17-20	B	10+	11	1
9	17-20	C	0-3	199	9
10	17-20	C	4-7	298	13
11	17-20	C	8-9	179	1
12	17-20	C	10+	Small	0
13	17-20	D	0-3	763	3
14	17-20	D	4-7	860	2
15	17-20	D	8-9	Small	0
16	17-20	D	10+	Small	0
17	21-24	A	0-3	302	10
18	21-24	A	4-7	194	31
19	21-24	A	8-9	135	10
20	21-24	A	10+	166	4

- A. Generate ... Select Node ("Or")
- B. Generate ... Select Node ("And")

Answer: B

Question: 3

Which nodes are best suited for revealing relationship between categorical (nominal, ordinal) fields? (Select all that apply)

- A. Mean's node
- B. Matrix node

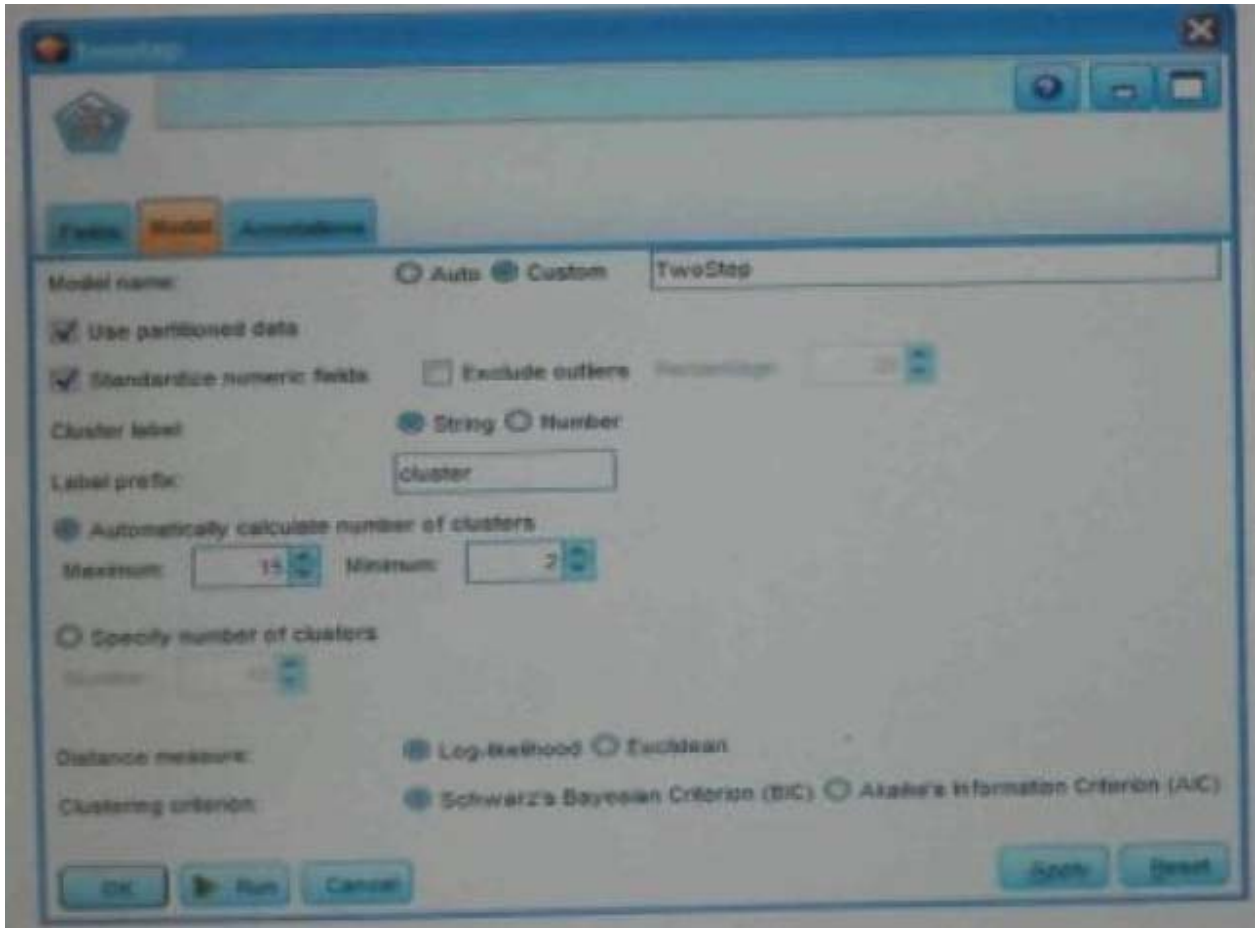
Exam Name:	IBMPSSMPRO: IBM SPSS Modeler Professional		
Exam Type:	IBM	Exam Code:	SPS-200
Certification:	IBM Certified Specialist	Total Questions:	73

- C. Distribution node
- D. Table node

Answer: A, C

Question: 4

In two step node shown below, what does standardize numeric fields mean?



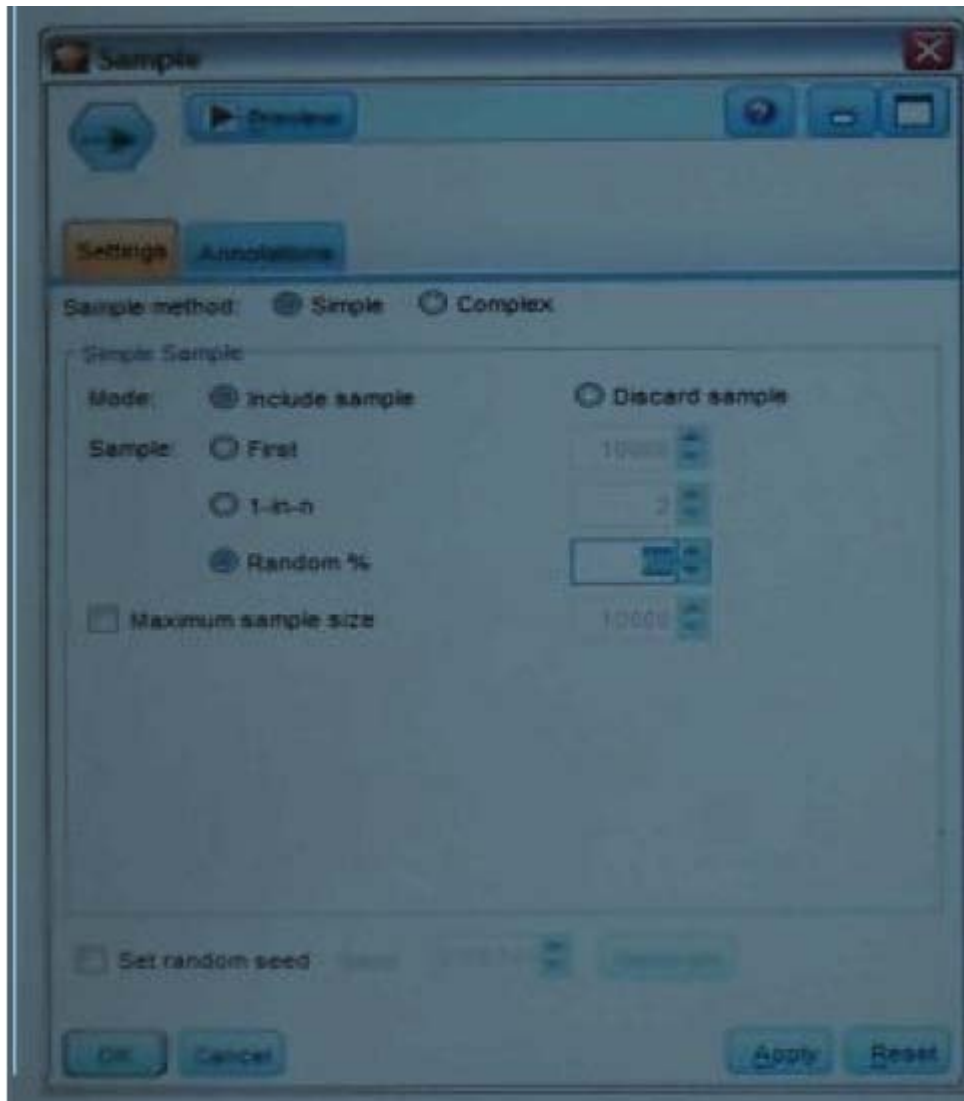
- A. Eliminate outliers to improve results.
- B. Transform the numeric fields to a scale with a mean of zero and variance of one.
- C. Limit the number of created clusters.
- D. Use only the numeric fields scale.

Answer: B

Question: 5

Which statement is correct regarding the sample node dialogue shown below?

Exam Name:	IBMPSSMPRO: IBM SPSS Modeler Professional		
Exam Type:	IBM	Exam Code:	SPS-200
Certification	IBM Certified Specialist	Total Questions:	73



- A. It will select every 60th record from the data.
- B. It will randomly select exactly 60% of all the record.
- C. It will select approximately 60% of the records. This is, each record will have a 60% probability of being selected.
- D. It will always draw the same 60% of records each time this sample node is run.

Answer: C

Question: 6

Which statements are true of the Feature Selection node? (Select all that apply)

- A. Input fields can be selected on the basis of importance.
- B. The Target fields can be either categorical or continuous measurement.
- C. The Input fields can only be continuous measurement.
- D. When a target field is not specified then it will create a generalized output.

Answer: A, B



Pass4sure Certification Exam Features;

- Pass4sure offers over **2500** Certification exams for professionals.
- More than **98,800** Satisfied Customers Worldwide.
- Average **99.8%** Success Rate.
- Over **120** Global Certification Vendors Covered.
- Services of **Professional & Certified Experts** available via support.
- Free **90 days** updates to match real exam scenarios.
- **Instant Download Access!** No Setup required.
- Price as low as **\$19**, which is 80% more **cost effective** than others.
- **Verified answers** researched by industry experts.
- Study Material **updated** on regular basis.
- Questions / Answers are downloadable in **PDF** format.
- Mobile Device Supported (**Android, iPhone, iPod, iPad**)
- **No authorization** code required to open exam.
- **Portable** anywhere.
- **Guaranteed Success.**
- **Fast**, helpful support **24x7**.



View list of All certification exams offered;
<http://www.ipass4sure.com/all exams.asp>

View list of All Study Guides (SG);
<http://www.ipass4sure.com/study-guides.asp>

View list of All Audio Exams (AE);
<http://www.ipass4sure.com/audio-exams.asp>

Download Any Certification Exam DEMO.
<http://www.ipass4sure.com/samples.asp>

To purchase Full version of exam click below;
<http://www.ipass4sure.com/all exams.asp>

3COM	CompTIA	Filemaker	IBM	LPI	OMG	Sun
ADOBE	ComputerAssociates	Fortinet	IISFA	McAfee	Oracle	Sybase
APC	CWNP	Foundry	Intel	McData	PMI	Symantec
Apple	DELL	Fujitsu	ISACA	Microsoft	Polycom	TeraData
BEA	ECCouncil	GuidanceSoftware	ISC2	Mile2	RedHat	TIA
BICSI	EMC	HDI	ISEB	NetworkAppliance	Sair	Tibco
CheckPoint	Enterasys	Hitachi	ISM	Network-General	SASInstitute	TruSecure
Cisco	ExamExpress	HP	Juniper	Nokia	SCP	Veritas
Citrix	Exin	Huawei	Legato	Nortel	See-Beyond	Vmware
CIW	ExtremeNetworks	Hyperion	Lotus	Novell	Google	

and many others.. See complete list [Here](#)

