

Examcollection

<http://www.ipass4sure.com/examcollection.htm>

SC0-411

SCP

Hardening the Infrastructure

<http://www.ipass4sure.com/exams.asp?examcode=SC0-411>

The SC0-411 practice exam is written and formatted by Certified Senior IT Professionals working in today's prospering companies and data centers all over the world! The SC0-411 Practice Test covers all the exam topics and objectives and will prepare you for success quickly and efficiently. The SC0-411 exam is very challenging, but with our SC0-411 questions and answers practice exam, you can feel confident in obtaining your success on the SC0-411 exam on your FIRST TRY!

SCP SC0-411 Exam Features

- Detailed questions and answers for SC0-411 exam
- Try a demo before buying any SCP exam
- SC0-411 questions and answers, updated regularly
- Verified SC0-411 answers by Experts and bear almost 100% accuracy
- SC0-411 tested and verified before publishing
- SC0-411 examcollection vce questions with exhibits
- SC0-411 same questions as real exam with multiple choice options

Acquiring SCP certifications are becoming a huge task in the field of I.T. More over these exams like SC0-411 exam are now continuously updating and accepting this challenge is itself a task. This SC0-411 test is an important part of SCP certifications. We have the resources to prepare you for this. The SC0-411 exam is essential and core part of SCP certifications and once you clear the exam you will be able to solve the real life problems yourself. Want to take advantage of the Real SC0-411 Test and save time and money while developing your skills to pass your SCP SC0-411 Exam? Let us help you climb that ladder of success and pass your SC0-411 now!

DEMO EXAM

For Full Version visit

<http://www.ipass4sure.com/allexams.asp>

QUESTION 1

If an attacker uses a program that sends thousands of email messages to every user of the network, some of them with over 50MB attachments. What are the possible consequences to the email server in the network?

- A. Server hard disk can fill to capacity
- B. Client hard disks can fill to capacity
- C. Server can completely crash
- D. Network bandwidth can be used up
- E. Clients cannot receive new email messages

Answer: AC

QUESTION 2

You have recently installed an Apache Web server on a Red Hat Linux machine. When you return from lunch, you find that a colleague has made a few configuration changes. One thing you notice is a .htpasswd file. What is the function of this file?

- A. It is a copy of the /etc/passwd file for Web access
- B. It is a copy of the etc/shadow file for Web access
- C. It is a listing of all anonymous users to the Web server
- D. It is a listing of http users and passwords for authentication
- E. It is a database file that can be pulled remotely via a web interface to identify currently logged in users.

Answer: D

QUESTION 3

In order to perform promiscuous mode captures using the Ethereal capture tool on a Windows 2000 machine, what must first be installed?

- A. IPv4 stack
- B. IPv6 stack
- C. WinPcap
- D. Nothing, it will capture by default
- E. At least two network adapters

Answer: C

QUESTION 4

In a TCP Header, what is the function of the first sixteen bits?

- A. To define the type
- B. To define the IP Version

SC0-411

- C. To define the destination port number
- D. To define the upper layer protocol
- E. To define the source port number

Answer: E

QUESTION 5

You are configuring the IP addressing for your network. One of the subnets has been defined with addresses already. You run ifconfig on a host and determine that it has an address of 172.18.32.54 with a mask of 255.255.254.0. What is the network ID to which this host belongs?

- A. 172.18.0.0
- B. 0.0.32.0
- C. 172.0.0.0
- D. 172.18.32.32
- E. 172.18.32.0

Answer: E

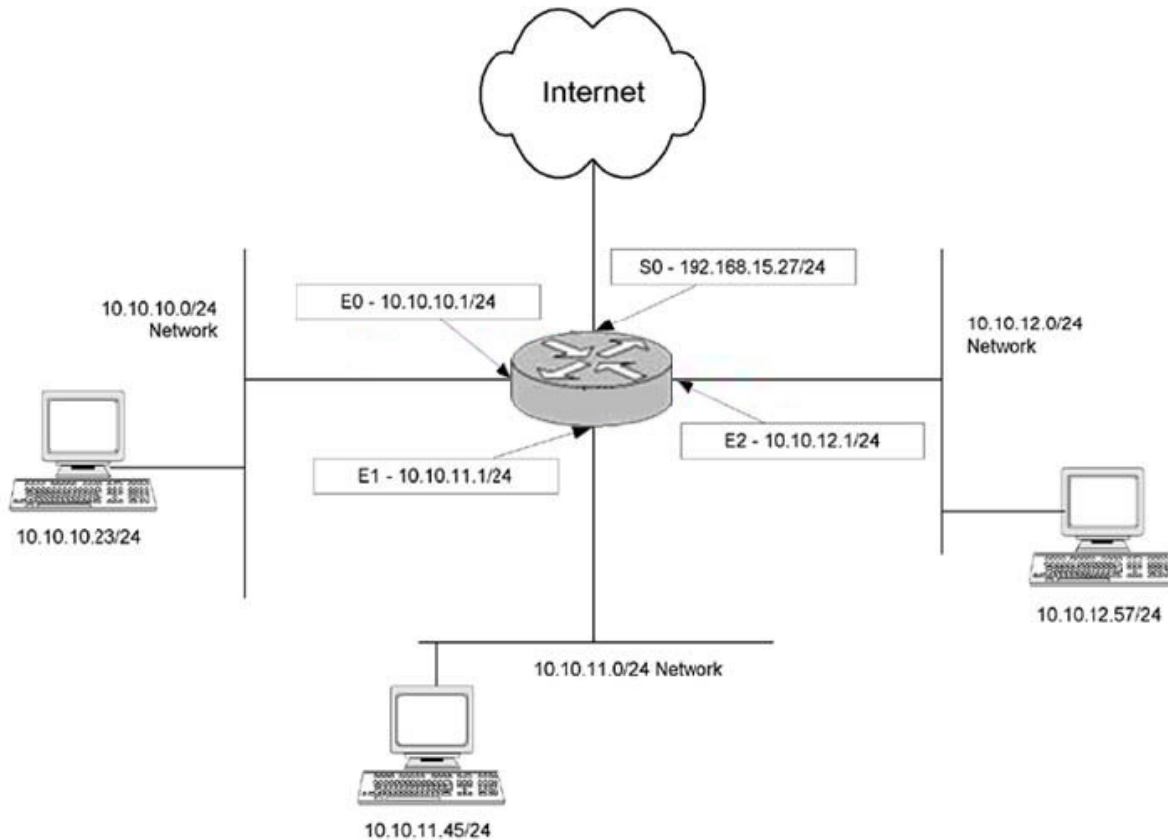
QUESTION 6

You are configuring the Access Lists for your new Cisco Router. The following are the commands that are entered into the router for the list configuration.

```
Router(config)#access-list 145 deny tcp any 10.10.0.0 0.0.255.255 eq 80
Router(config)#access-list 145 deny tcp any 10.10.0.0 0.0.255.255 eq 119
Router(config)#access-list 145 permit ip any any
Router(config)#interface Serial 0
Router(config-if)#ip access-group 145 in
Router(config-if)#interface Ethernet 0
Router(config-if)# ip access-group 145 in
Router(config-if)#interface Ethernet 1
Router(config-if)# ip access-group 145 in
Router(config-if)#interface Ethernet 2
Router(config-if)# ip access-group 145 in
```

Based on this configuration, and using the exhibit, select the answers that identify what the list will accomplish.

SC0-411



- A. Permit network 10.10.10.0 to access NNTP on the Internet
- B. Permit network 10.10.10.0 to access NNTP on network 10.10.11.0
- C. Permit network 10.10.10.0 to access NNTP on network 10.10.12.0
- D. Deny network 10.10.10.0 to access Internet WWW sites
- E. Permit network 10.10.10.0 to access Internet WWW sites

Answer: AE

QUESTION 7

You are configuring the dial up options in your Windows 2000 network. While you do so, you are studying the configuration options available to you. You notice the term RADIUS used often during your research. What does RADIUS provide?

- A. RADIUS is used to define the implementation method of Kerberos in a network.
- B. RADIUS is used to define the implementation method of PKI in a network.
- C. RADIUS is used to define the implementation method of Biometrics in a network.
- D. RADIUS is a standard that provides authorization, authentication, identification, and accounting services.
- E. RADIUS is a standard that defines the methods used to secure the connections between a dialup client and a dialup server.

Answer: D

QUESTION 8

You are in the process of securing several new machines on your Windows 2000 network. To help with the process Microsoft has defined a set of Security Templates to use in various situations. Which of the following best describes the Basic Security Template?

- A. This template is provided as a way to reverse the implementation of different Windows 2000 security settings, except for user rights.
- B. This template is provided so that Local Users have ideal security settings, while Power Users have settings that are compatible with NT 4 Users.
- C. This template is provided to implement suggested security settings for all security areas, except for the following: files, folders, and Registry keys.
- D. This template is provided to create the maximum level of security for network traffic between Windows 2000 clients.
- E. This template is provided to allow for an administrator to run legacy applications on a DC.

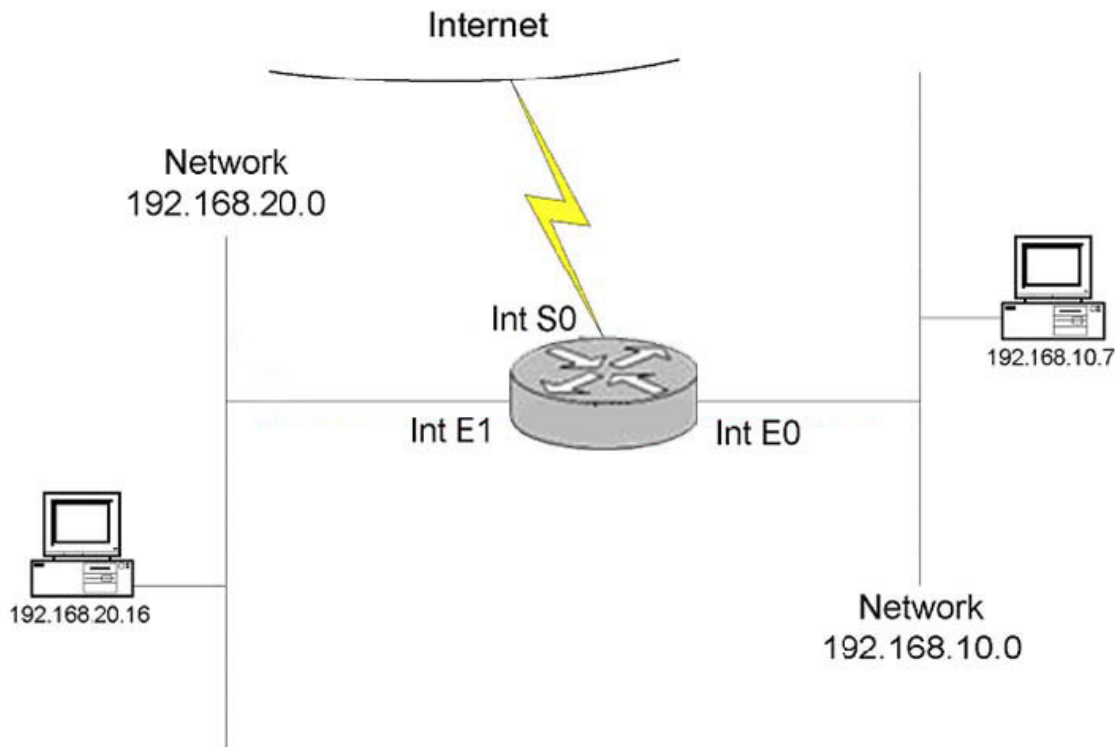
Answer: A

QUESTION 9

The exhibit shows a router with three interfaces E0, E1 and S0. Interfaces E0 and E1 are connected to internal networks 192.168.10.0 and 192.168.20.0 respectively and interface S0 is connected to the Internet.

The objective is to allow two hosts, 192.168.20.16 and 192.168.10.7 access to the Internet while all other hosts are to be denied Internet access. All hosts on network 192.168.10.0 and 192.168.20.0 must be allowed to access resources on both internal networks. From the following, select all the access list statements that are required to make this possible.

SC0-411



- A. access-list 53 permit 192.168.20.16 0.0.0.0
- B. access-list 80 permit 192.168.20.16 0.0.0.0
- C. access-list 53 deny 0.0.0.0 255.255.255.255
- D. access-list 80 permit 192.168.10.7 0.0.0.0
- E. int S0, ip access-group 53 out
- F. int S0, ip access-group 80 out

Answer: BDF

QUESTION 10

Which of the following fields are found in a user account's line in the /etc/passwd file?

- A. The User Identifier assigned to the user account
- B. The home directory used by the user account
- C. The number of days since the user account password was changed
- D. The full name for the user account
- E. The number of days until the user account's password must change

Answer: ABD

QUESTION 11

When a new user account is created in Linux, what values are assigned?



Pass4sure Certification Exam Features;

- Pass4sure offers over **2500** Certification exams for professionals.
- More than **98,800** Satisfied Customers Worldwide.
- Average **99.8%** Success Rate.
- Over **120** Global Certification Vendors Covered.
- Services of **Professional & Certified Experts** available via support.
- Free **90 days** updates to match real exam scenarios.
- **Instant Download Access!** No Setup required.
- Price as low as **\$19**, which is 80% more **cost effective** than others.
- **Verified answers** researched by industry experts.
- Study Material **updated** on regular basis.
- Questions / Answers are downloadable in **PDF** format.
- Mobile Device Supported (**Android, iPhone, iPod, iPad**)
- **No authorization** code required to open exam.
- **Portable** anywhere.
- **Guaranteed Success.**
- **Fast**, helpful support **24x7**.



View list of All certification exams offered;
<http://www.ipass4sure.com/all exams.asp>

View list of All Study Guides (SG);
<http://www.ipass4sure.com/study-guides.asp>

View list of All Audio Exams (AE);
<http://www.ipass4sure.com/audio-exams.asp>

Download Any Certification Exam DEMO.
<http://www.ipass4sure.com/samples.asp>

To purchase Full version of exam click below;
<http://www.ipass4sure.com/all exams.asp>

3COM	CompTIA	Filemaker	IBM	LPI	OMG	Sun
ADOBE	ComputerAssociates	Fortinet	IISFA	McAfee	Oracle	Sybase
APC	CWNP	Foundry	Intel	McData	PMI	Symantec
Apple	DELL	Fujitsu	ISACA	Microsoft	Polycom	TeraData
BEA	ECCouncil	GuidanceSoftware	ISC2	Mile2	RedHat	TIA
BICSI	EMC	HDI	ISEB	NetworkAppliance	Sair	Tibco
CheckPoint	Enterasys	Hitachi	ISM	Network-General	SASInstitute	TruSecure
Cisco	ExamExpress	HP	Juniper	Nokia	SCP	Veritas
Citrix	Exin	Huawei	Legato	Nortel	See-Beyond	Vmware
CIW	ExtremeNetworks	Hyperion	Lotus	Novell	Google	

and many others.. See complete list [Here](#)

