

Examcollection

<http://www.ipass4sure.com/examcollection.htm>

E20-670

EMC

*Networked Storage-CAS Installation/Troubleshooting
Specialization*

<http://www.ipass4sure.com/exams.asp?examcode=E20-670>

The E20-670 practice exam is written and formatted by Certified Senior IT Professionals working in today's prospering companies and data centers all over the world! The E20-670 Practice Test covers all the exam topics and objectives and will prepare you for success quickly and efficiently. The E20-670 exam is very challenging, but with our E20-670 questions and answers practice exam, you can feel confident in obtaining your success on the E20-670 exam on your FIRST TRY!

EMC E20-670 Exam Features

- Detailed questions and answers for E20-670 exam
- Try a demo before buying any EMC exam
- E20-670 questions and answers, updated regularly
- Verified E20-670 answers by Experts and bear almost 100% accuracy
- E20-670 tested and verified before publishing
- E20-670 examcollection vce questions with exhibits
- E20-670 same questions as real exam with multiple choice options

Acquiring EMC certifications are becoming a huge task in the field of I.T. More over these exams like E20-670 exam are now continuously updating and accepting this challenge is itself a task. This E20-670 test is an important part of EMC certifications. We have the resources to prepare you for this. The E20-670 exam is essential and core part of EMC certifications and once you clear the exam you will be able to solve the real life problems yourself. Want to take advantage of the Real E20-670 Test and save time and money while developing your skills to pass your EMC E20-670 Exam? Let us help you climb that ladder of success and pass your E20-670 now!

DEMO EXAM

For Full Version visit

<http://www.ipass4sure.com/allexams.asp>

Question: 1

What is default data protection scheme?

- A. Meta
- B. Parity
- C. Mirror
- D. Stripe

Answer: C

Question: 2

What is the approximate storage space increase by using CPP over CPM?

- A. 5% - 10%
- B. 10% - 15%
- C. 16% - 20%
- D. 20% - 25%

Answer: C

Question: 3

Centera cluster is not able to send emails to EMC support. How would the CE test email home?

- A. Centera CLI command 'notify'
- B. Secure shell command 'call home'
- C. Centera CLI command 'test emailhome'
- D. From Centera Viewer pull down menu, click tools, click service, click emailtest

Answer: A

Question: 4

What is the purpose of the Kickstart process?

- A. Builds routing tables in all nodes
- B. Initialize Cube switches to default setup
- C. Assigns Cube and Node identity (cXXXnYY)
- D. Initialize communication between host servers and Cube switches

Answer: C

Question: 5

How many CUAs can point to the same Centera?

- A. 1
- B. 2
- C. 6
- D. Unlimited

Answer: B

Question: 6

During profile creation, which file type is stored on the local host?

- A. .gif
- B. .pea

- C. .prf
- D. .txt

Answer: B

Question: 7

Orphans in a CFA environment are files deleted from which platform?

- A. Centera but NOT the Celerra
- B. Celerra but NOT the Centera
- C. Celerra but NOT from the CFA
- D. CFA but NOT from the Centera

Answer: B

Question: 8

Which additional pools are created in CentraStar 3.1?

- A. Cluster, Default
- B. Application, Cluster
- C. ConsoleAdmin, EMCService
- D. ConsoleArchive, AuditArchive

Answer: D

Question: 9

Which CLI commands are required to configure OnAlert?

- A. Set Cluster Service, Set Owner, Set SMTP
- B. Set SMTP, Set Cluster Notification, Set Owner
- C. Set Cluster Notification, Set Service Cluster, Set Owner
- D. Set Owner, Set Cluster Service, Set Cluster Notification

Answer: D

Question: 10

A 2GB image is stored using cpp on a 16 node Gen4 Centera. How many nodes will contain a segment of that image?

- A. 4
- B. 6
- C. 8
- D. 16

Answer: B

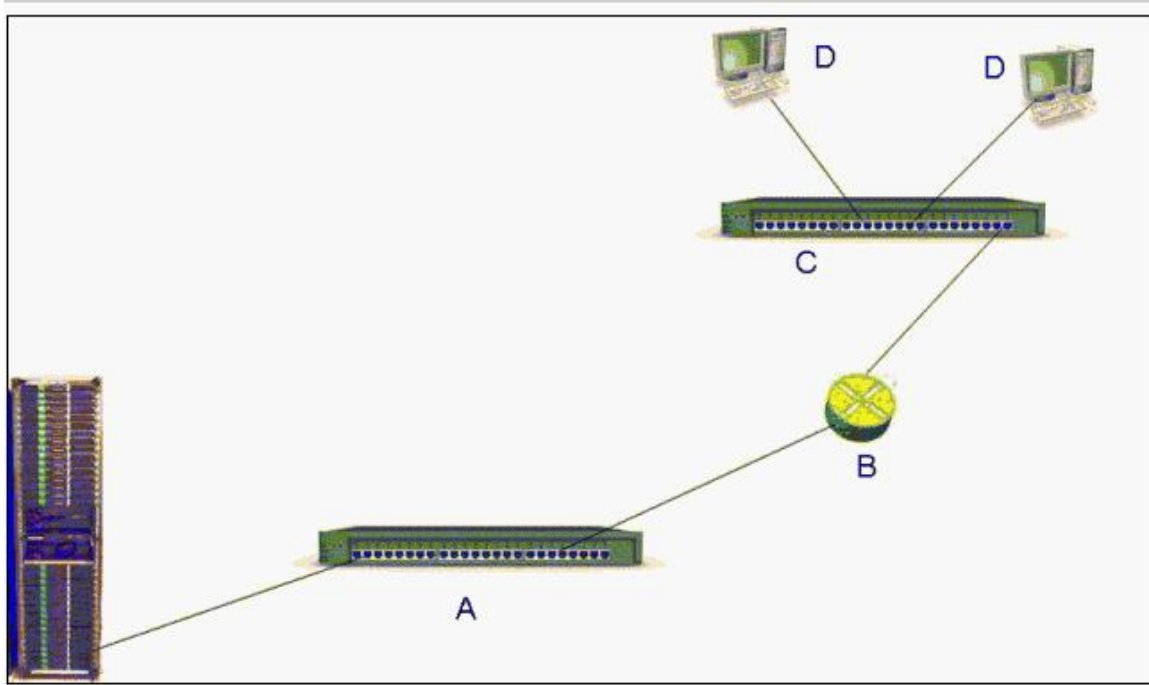
Question: 11

What are the mount points on the CUA?

- A. /sfs_nfs and /sfs_cifs
- B. /cua_nfs and /cua_cifs
- C. /access_nfs and /access_cifs
- D. /gateway_nfs and /gateway_cifs

Answer: D

Question: 12
Exhibit



What are the components of a basic network?

- A. A=Hub B=Switch C=Hub D=Hosts
- B. A=Bridge B=NAT C=Switch D=Hosts
- C. A=Switch B=Router C=Switch D=Hosts
- D. A=Router B=Switch C=Router D=Hosts

Answer: C

Question: 13

In CentraStar 3.0, which format does ConnectEMC use to send the health report, alerts and notifications to the customer?

- A. Encrypted XML
- B. Encrypted HTML
- C. Unencrypted XML
- D. Unencrypted HTML

Answer: D

Question: 14

A CE is at a customer site. How should they connect their laptop to the CUA installed on a Gen4 node?

- A. Crossover cable into eth0 using 10.255.0.1
- B. Crossover cable into eth1 using 10.255.0.1
- C. Crossover cable into eth2 using 10.255.0.1



Pass4sure Certification Exam Features;

- Pass4sure offers over **2500** Certification exams for professionals.
- More than **98,800** Satisfied Customers Worldwide.
- Average **99.8%** Success Rate.
- Over **120** Global Certification Vendors Covered.
- Services of **Professional & Certified Experts** available via support.
- Free **90 days** updates to match real exam scenarios.
- **Instant Download Access!** No Setup required.
- Price as low as **\$19**, which is 80% more **cost effective** than others.
- **Verified answers** researched by industry experts.
- Study Material **updated** on regular basis.
- Questions / Answers are downloadable in **PDF** format.
- Mobile Device Supported (**Android, iPhone, iPod, iPad**)
- **No authorization** code required to open exam.
- **Portable** anywhere.
- **Guaranteed Success.**
- **Fast**, helpful support **24x7**.



View list of All certification exams offered;
<http://www.ipass4sure.com/allexams.asp>

View list of All Study Guides (SG);
<http://www.ipass4sure.com/study-guides.asp>

View list of All Audio Exams (AE);
<http://www.ipass4sure.com/audio-exams.asp>

Download Any Certification Exam DEMO.
<http://www.ipass4sure.com/samples.asp>

To purchase Full version of exam click below;
<http://www.ipass4sure.com/allexams.asp>

3COM	CompTIA	Filemaker	IBM	LPI	OMG	Sun
ADOBE	ComputerAssociates	Fortinet	IISFA	McAfee	Oracle	Sybase
APC	CWNP	Foundry	Intel	McData	PMI	Symantec
Apple	DELL	Fujitsu	ISACA	Microsoft	Polycom	TeraData
BEA	ECCouncil	GuidanceSoftware	ISC2	Mile2	RedHat	TIA
BICSI	EMC	HDI	ISEB	NetworkAppliance	Sair	Tibco
CheckPoint	Enterasys	Hitachi	ISM	Network-General	SASInstitute	TruSecure
Cisco	ExamExpress	HP	Juniper	Nokia	SCP	Veritas
Citrix	Exin	Huawei	Legato	Nortel	See-Beyond	Vmware
CIW	ExtremeNetworks	Hyperion	Lotus	Novell	Google	

and many others.. See complete list [Here](#)

