

Examcollection

<http://www.ipass4sure.com/examcollection.htm>

E20-530

EMC

Network Storage - SAN Specialist

<http://www.ipass4sure.com/exams.asp?examcode=E20-530>

The E20-530 practice exam is written and formatted by Certified Senior IT Professionals working in today's prospering companies and data centers all over the world! The E20-530 Practice Test covers all the exam topics and objectives and will prepare you for success quickly and efficiently. The E20-530 exam is very challenging, but with our E20-530 questions and answers practice exam, you can feel confident in obtaining your success on the E20-530 exam on your FIRST TRY!

EMC E20-530 Exam Features

- Detailed questions and answers for E20-530 exam
- Try a demo before buying any EMC exam
- E20-530 questions and answers, updated regularly
- Verified E20-530 answers by Experts and bear almost 100% accuracy
- E20-530 tested and verified before publishing
- E20-530 examcollection vce questions with exhibits
- E20-530 same questions as real exam with multiple choice options

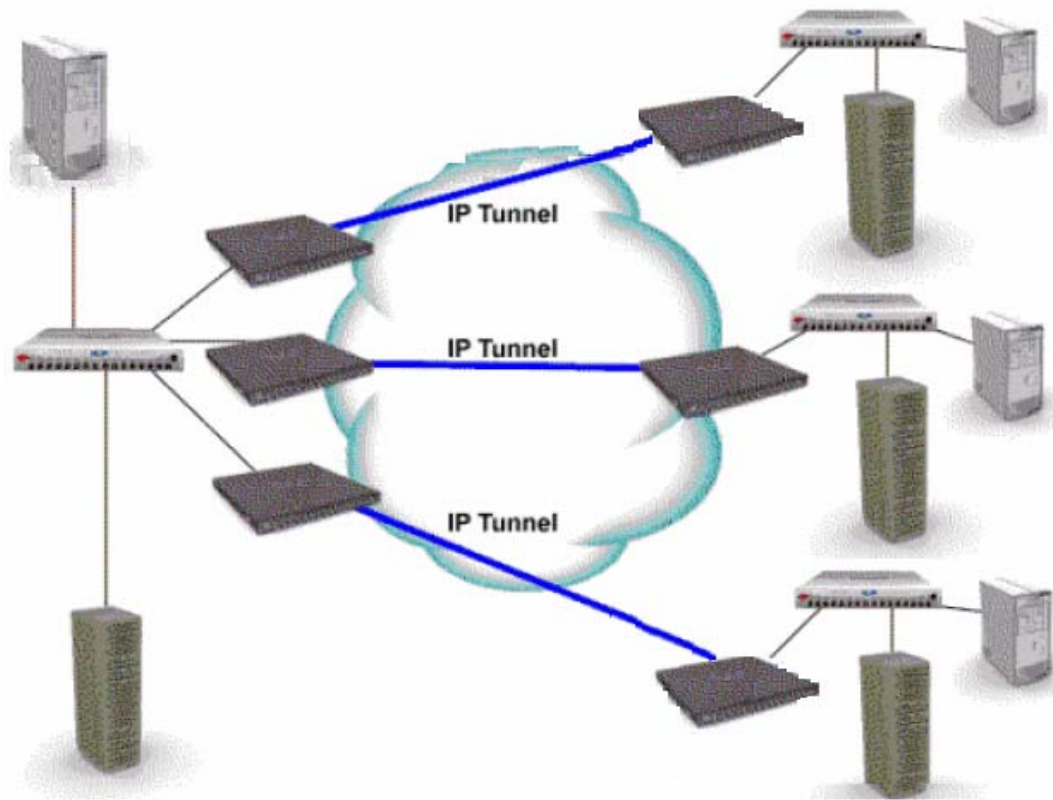
Acquiring EMC certifications are becoming a huge task in the field of I.T. More over these exams like E20-530 exam are now continuously updating and accepting this challenge is itself a task. This E20-530 test is an important part of EMC certifications. We have the resources to prepare you for this. The E20-530 exam is essential and core part of EMC certifications and once you clear the exam you will be able to solve the real life problems yourself. Want to take advantage of the Real E20-530 Test and save time and money while developing your skills to pass your EMC E20-530 Exam? Let us help you climb that ladder of success and pass your E20-530 now!

DEMO EXAM

For Full Version visit

<http://www.ipass4sure.com/allexams.asp>

Question: 1
Exhibit



When scaling a FCIP extended network, what must be taken into account prior to merging the SANs?

- A. Process for future firmware upgrades.
- B. Traffic flows could be disrupted should a storage switch go down.
- C. The combined number of devices in the new FCIP extended SAN.
- D. Inter-switch communication, domain and zone management, and VSANs.

Answer: D

Question: 2

What is the difference between the native long-wave Fibre Channel distance that EMC supports vs. what Cisco supports?

- A. EMC: 10 km, Cisco: 35km
- B. EMC: 20 km, Cisco: 15km
- C. EMC: 35 km, Cisco: 10km
- D. EMC: 35 km, Cisco: 15km

Answer: C

Question: 3 DRAG DROP

Which sequence of steps must be performed to complete an online firmware upgrade of a target Switch in an environment with dual fabrics; Power Path, and hosts which are NOT configured to EMC standards?

Steps in order	Steps to be moved
Place first step here	Perform the firmware upgrade
Place second step here	Test the HBA and port functionality
Place third step here	Restart the EMC Control Center FCC agent
Place fourth step here	Deactivate the paths through the target switch
Place fifth step here	Reactivate the paths through the target switch
Place sixth step here	Shutdown the EMC Control Center FCC agent
	Document host HBA port and cable configurations
	Reconcile host cabling with the zoning and LUN masking databases

Answer: Pending. Send your suggestion to feedback@SelfExamEngine.com

Question: 4

How many M-series Products on a single service processor can be supported by Connectrix manager?

- A. 16
- B. 32
- C. 48
- D. 64

Answer: C

Question: 5

Which command is used to determine if the Connectrix Service Processor can communicate to the FCC agent host?

- A. ping
- B. tracert
- C. netstat
- D. ifconfig

Answer: A

Question: 6

How can it be verified that the Control Center Server is available on TCP port 5799?

- A. srvmgr
- B. netstat -a
- C. ping console ltype -m
- D. ping localhost -p 5799

Answer: B

Question: 7

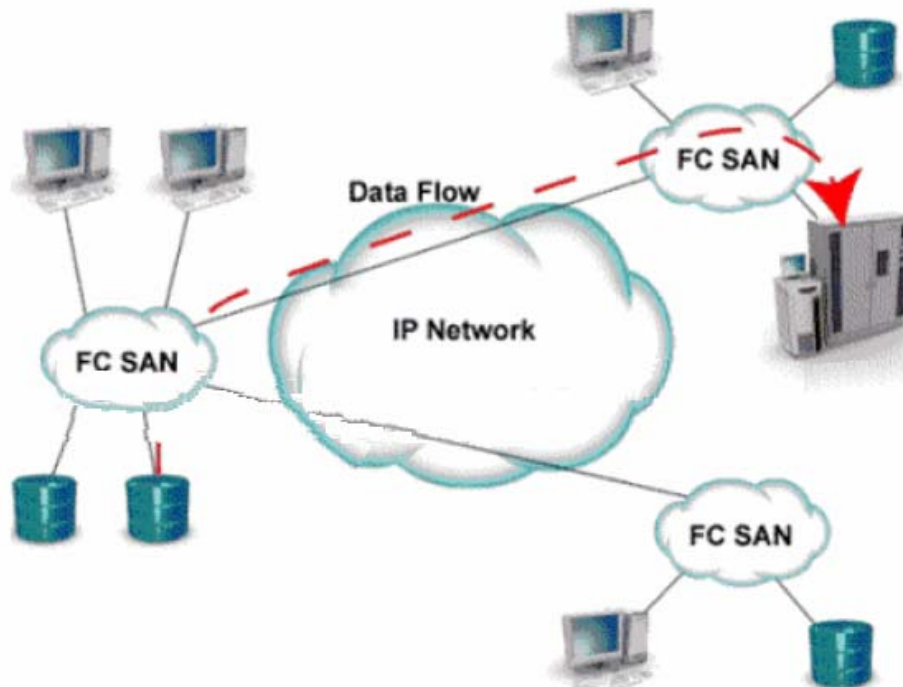
Which two [2] features apply to both the MDS-9120 and the MDS-9140 switches?

- A. All port are non-blocking
- B. Provides "host optimized" ports
- C. Supports SANtegrity Security Suite
- D. Provides "bandwidth optimized" ports

Answer: B, D

Question: 8

Exhibit.



What is represented by the flow in the picture?

- A. ISCI representation of remote DR
- B. IFCP representation of remote DR
- C. IFCP representation of remote backup
- D. ISCSI representation of remote backup



Pass4sure Certification Exam Features;

- Pass4sure offers over **2500** Certification exams for professionals.
- More than **98,800** Satisfied Customers Worldwide.
- Average **99.8%** Success Rate.
- Over **120** Global Certification Vendors Covered.
- Services of **Professional & Certified Experts** available via support.
- Free **90 days** updates to match real exam scenarios.
- **Instant Download Access!** No Setup required.
- Price as low as **\$19**, which is 80% more **cost effective** than others.
- **Verified answers** researched by industry experts.
- Study Material **updated** on regular basis.
- Questions / Answers are downloadable in **PDF** format.
- Mobile Device Supported (**Android, iPhone, iPod, iPad**)
- **No authorization** code required to open exam.
- **Portable** anywhere.
- **Guaranteed Success.**
- **Fast**, helpful support **24x7**.



View list of All certification exams offered;
<http://www.ipass4sure.com/all exams.asp>

View list of All Study Guides (SG);
<http://www.ipass4sure.com/study-guides.asp>

View list of All Audio Exams (AE);
<http://www.ipass4sure.com/audio-exams.asp>

Download Any Certification Exam DEMO.
<http://www.ipass4sure.com/samples.asp>

To purchase Full version of exam click below;
<http://www.ipass4sure.com/all exams.asp>

3COM	CompTIA	Filemaker	IBM	LPI	OMG	Sun
ADOBE	ComputerAssociates	Fortinet	IISFA	McAfee	Oracle	Sybase
APC	CWNP	Foundry	Intel	McData	PMI	Symantec
Apple	DELL	Fujitsu	ISACA	Microsoft	Polycom	TeraData
BEA	ECCouncil	GuidanceSoftware	ISC2	Mile2	RedHat	TIA
BICSI	EMC	HDI	ISEB	NetworkAppliance	Sair	Tibco
CheckPoint	Enterasys	Hitachi	ISM	Network-General	SASInstitute	TruSecure
Cisco	ExamExpress	HP	Juniper	Nokia	SCP	Veritas
Citrix	Exin	Huawei	Legato	Nortel	See-Beyond	Vmware
CIW	ExtremeNetworks	Hyperion	Lotus	Novell	Google	

and many others.. See complete list [Here](#)

