

Examcollection

<http://www.ipass4sure.com/examcollection.htm>

E20-060

EMC

EMC Technology Foundations – Business Continuity

<http://www.ipass4sure.com/exams.asp?examcode=E20-060>

The E20-060 practice exam is written and formatted by Certified Senior IT Professionals working in today's prospering companies and data centers all over the world! The E20-060 Practice Test covers all the exam topics and objectives and will prepare you for success quickly and efficiently. The E20-060 exam is very challenging, but with our E20-060 questions and answers practice exam, you can feel confident in obtaining your success on the E20-060 exam on your FIRST TRY!

EMC E20-060 Exam Features

- Detailed questions and answers for E20-060 exam
- Try a demo before buying any EMC exam
- E20-060 questions and answers, updated regularly
- Verified E20-060 answers by Experts and bear almost 100% accuracy
- E20-060 tested and verified before publishing
- E20-060 examcollection vce questions with exhibits
- E20-060 same questions as real exam with multiple choice options

Acquiring EMC certifications are becoming a huge task in the field of I.T. More over these exams like E20-060 exam are now continuously updating and accepting this challenge is itself a task. This E20-060 test is an important part of EMC certifications. We have the resources to prepare you for this. The E20-060 exam is essential and core part of EMC certifications and once you clear the exam you will be able to solve the real life problems yourself. Want to take advantage of the Real E20-060 Test and save time and money while developing your skills to pass your EMC E20-060 Exam? Let us help you climb that ladder of success and pass your E20-060 now!

DEMO EXAM

For Full Version visit

<http://www.ipass4sure.com/allexams.asp>

QUESTION 1

After a client has presented information to be stored on Centera, what is the next step?

- A. Unique Content Address is calculated
- B. Object is protected
- C. Object is sent to Centera via Centera API over IP
- D. Object is replicated

Answer: A

QUESTION 2

Which two of the following are iSCSI naming conventions? (Choose two.)

- A. iSNS
- B. iQN
- C. EUI
- D. DNS

Answer: B,C

QUESTION 3

How does the TimeFinder/Mirror Restore operation transfer data?

- A. It restores from the VDEV device to the BCV device
- B. It restores from the R2 device to the R1 device
- C. It copies from the Standard device to the BCV device
- D. It copies from the BCV device to the Standard device

Answer: D

QUESTION 4

Which of the following is a feature of the dual-ported disk and redundant directors in Symmetrix DMX systems?

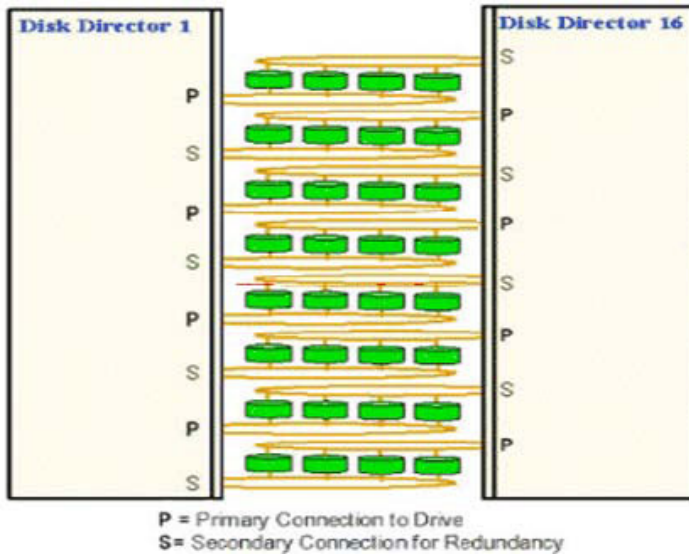
- A. Disk modules have two independent Fibre Channel port
- B. Directors are always configured in pairs
- C. Directors have two primary loops and two secondary loops for failover
- D. Driveports connect to directors by the same loop

Answer: B

QUESTION 5

Exhibit

E20-060



Which two of the following are features of the dual-ported disk and redundant directors in a Symmetrix DMX system? (Choose two.)

- A. Individual disk drives can be inserted or removed without an interruption of service
- B. Disk modules have four independent Fibre Channel ports
- C. Directors have two primary loops and two secondary loops for failover
- D. Directors are configured in pairs
- E. Drive ports connect to directors by the same loop

Answer: A,D

QUESTION 6

Which of the following Celerra data replication options provides a point-in-time filesystem copy over IP?

- A. TimeFinder/FS Snapcopy
- B. SnapSure
- C. OnCourse
- D. Celerra Replicator

Answer: D

QUESTION 7

Which of the following protocols can be used to manage multi-vendor switches?

- A. NDMP
- B. SMTP
- C. RPC
- D. SNMP

Answer: D

QUESTION 8

Which of the following Symmetrix feature allows striping data across multiple volumes?

- A. Meta Volumes
- B. Age-Link-Chain
- C. Dynamic Sparing
- D. Dynamic Mirrored Service Policy

Answer: A

QUESTION 9

Which of the following statements best describes a Fan-in Ratio for a SAN attached array?

- A. The qualified maximum number of HBA ports that can be direct attached to a storage port in a SAN
- B. The qualified maximum number of storage ports that can be accessed by a single initiator through a SAN
- C. The qualified maximum number of HBA ports that can be attached to a Target port in a SAN
- D. The maximum number of HBA and storage ports that can be contained in a zone in a switch

Answer: B

QUESTION 10

Which of the following statements best describes TimeFinder/Mirror Clone?

- A. Uses copy on write
- B. Uses copy on access
- C. Requires Symmetrix to be configured with a dedicated "Save Area" for changed data
- D. Requires Symmetrix to be configured with R1 and R2 devices

Answer: B

QUESTION 11

In the first step in an SRDF Semi-Synchronous I/O operation, cache of the source Symmetrix receives a write from the host. What is the next step?

- A. Write complete is sent to the host
- B. Write transmitted by the Source Symmetrix to the Target Symmetrix

E20-060

- C. Write received from host into cache of Source Symmetrix
- D. Target Symmetrix sends acknowledgement to Source Symmetrix

Answer: A

QUESTION 12

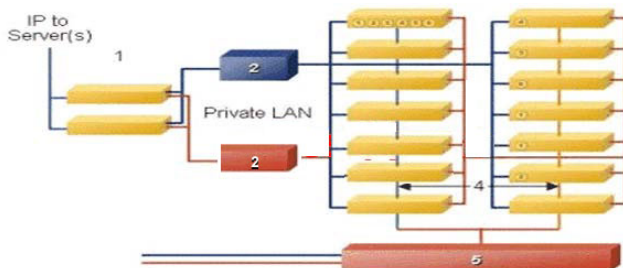
What is the advantage does hard zoning being to a SAN?

- A. Host-based volume access
- B. Configuration flexibility
- C. Security at the switch port level
- D. Ease of duplication

Answer: C

QUESTION 13

Exhibit



The exhibit above shows the basic architecture of a Centera. Which components are labeled #2 and #3?

- A. #2 = Access Nodes and #3 = Storage Nodes
- B. #2 = Switches and #3 = Storage Nodes
- C. #2 = Access Nodes and #3 = CAG
- D. #2 = Switches and #3 = Access Nodes

Answer: B

QUESTION 14

Which of the following is a feature of Connectrix enterprise directors?

- A. Secure functionality
- B. Fully redundant components
- C. Low port count
- D. Limited hot swappable components

Answer: B



Pass4sure Certification Exam Features;

- Pass4sure offers over **2500** Certification exams for professionals.
- More than **98,800** Satisfied Customers Worldwide.
- Average **99.8%** Success Rate.
- Over **120** Global Certification Vendors Covered.
- Services of **Professional & Certified Experts** available via support.
- Free **90 days** updates to match real exam scenarios.
- **Instant Download Access!** No Setup required.
- Price as low as **\$19**, which is 80% more **cost effective** than others.
- **Verified answers** researched by industry experts.
- Study Material **updated** on regular basis.
- Questions / Answers are downloadable in **PDF** format.
- Mobile Device Supported (**Android, iPhone, iPod, iPad**)
- **No authorization** code required to open exam.
- **Portable** anywhere.
- **Guaranteed Success.**
- **Fast**, helpful support **24x7**.



View list of All certification exams offered;
<http://www.ipass4sure.com/all exams.asp>

View list of All Study Guides (SG);
<http://www.ipass4sure.com/study-guides.asp>

View list of All Audio Exams (AE);
<http://www.ipass4sure.com/audio-exams.asp>

Download Any Certification Exam DEMO.
<http://www.ipass4sure.com/samples.asp>

To purchase Full version of exam click below;
<http://www.ipass4sure.com/all exams.asp>

3COM	CompTIA	Filemaker	IBM	LPI	OMG	Sun
ADOBE	ComputerAssociates	Fortinet	IISFA	McAfee	Oracle	Sybase
APC	CWNP	Foundry	Intel	McData	PMI	Symantec
Apple	DELL	Fujitsu	ISACA	Microsoft	Polycom	TeraData
BEA	ECCouncil	GuidanceSoftware	ISC2	Mile2	RedHat	TIA
BICSI	EMC	HDI	ISEB	NetworkAppliance	Sair	Tibco
CheckPoint	Enterasys	Hitachi	ISM	Network-General	SASInstitute	TruSecure
Cisco	ExamExpress	HP	Juniper	Nokia	SCP	Veritas
Citrix	Exin	Huawei	Legato	Nortel	See-Beyond	Vmware
CIW	ExtremeNetworks	Hyperion	Lotus	Novell	Google	

and many others.. See complete list [Here](#)

