

# **Examcollection**

<http://www.ipass4sure.com/examcollection.htm>

# 9A0-036

**ADOBE**

*Adobe PhotoShop CS ACE*

<http://www.ipass4sure.com/exams.asp?examcode=9A0-036>

The 9A0-036 practice exam is written and formatted by Certified Senior IT Professionals working in today's prospering companies and data centers all over the world! The 9A0-036 Practice Test covers all the exam topics and objectives and will prepare you for success quickly and efficiently. The 9A0-036 exam is very challenging, but with our 9A0-036 questions and answers practice exam, you can feel confident in obtaining your success on the 9A0-036 exam on your FIRST TRY!

## ADOBE 9A0-036 Exam Features

- Detailed questions and answers for 9A0-036 exam
- Try a demo before buying any ADOBE exam
- 9A0-036 questions and answers, updated regularly
- Verified 9A0-036 answers by Experts and bear almost 100% accuracy
- 9A0-036 tested and verified before publishing
- 9A0-036 examcollection vce questions with exhibits
- 9A0-036 same questions as real exam with multiple choice options

Acquiring ADOBE certifications are becoming a huge task in the field of I.T. More over these exams like 9A0-036 exam are now continuously updating and accepting this challenge is itself a task. This 9A0-036 test is an important part of ADOBE certifications. We have the resources to prepare you for this. The 9A0-036 exam is essential and core part of ADOBE certifications and once you clear the exam you will be able to solve the real life problems yourself. Want to take advantage of the Real 9A0-036 Test and save time and money while developing your skills to pass your ADOBE 9A0-036 Exam? Let us help you climb that ladder of success and pass your 9A0-036 now!

# **DEMO EXAM**

For Full Version visit

<http://www.ipass4sure.com/allexams.asp>

**Question: 1**

Which layer parameter can be saved when creating a Layer Comp?

- A. layer styles
- B. layer opacity
- C. layer stacking order
- D. layer blending mode

**Answer: A**

**Question: 2**

Which items are saved as part of a workspace?

- A. tool settings and palette positions
- B. tool settings and keyboard shortcuts
- C. palette positions and keyboard shortcuts
- D. the positions of all open palettes and the toolbox

**Answer: D**

**Question: 3**

Which parameter can you monitor in the Status Bar?

- A. the name of the active layer
- B. the document's color profile
- C. the name of the active document
- D. the document's modification date

**Answer: B**

**Question: 4**

You want to paint a layer by using the Brush tool with an opacity setting of 50%. Where do you change the opacity setting?

- A. Status Bar
- B. Layer palette
- C. Brushes palette
- D. Tool Options Bar

**Answer: D**

**Question: 5**

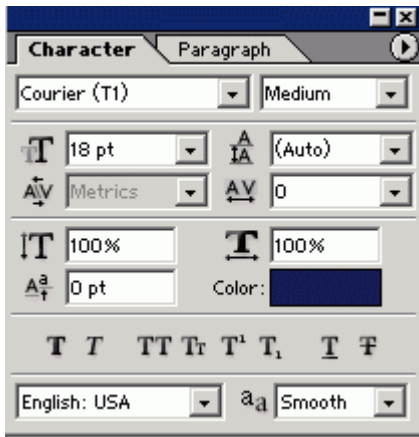
You have created several custom contours for Drop Shadow effects. You want to save the custom contours as a set while maintaining the default contours. What should you do?

- A. from the Styles palette menu, choose Save Styles
- B. from the Layer palette menu, choose New Layer Set
- C. in the Preset Manager dialog box, select the contours and click on Save Set
- D. while editing contours in the Layer Style dialog box, choose Save Contours from the fly-out menu.

**Answer: C**

**Question: 6**

Exhibit.



Which Character palette option controls kerning?

- A. A
- B. B
- C. C
- D. D

**Answer: A**

**Question: 7**

You have selected the Type tool. You want to create a new type layer overlapping a previous one.

What should you do?

- A. double click with the Type tool
- B. hold down the Shift key as you click with the Type tool
- C. hold down the Option (Mac OS) or Alt (Windows) key as you click with the Type tool.
- D. Hold down the Command (Mac OS) or Ctrl (Windows) key as you click with the Type tool.

**Answer: B**

**Question: 8**

Exhibit.

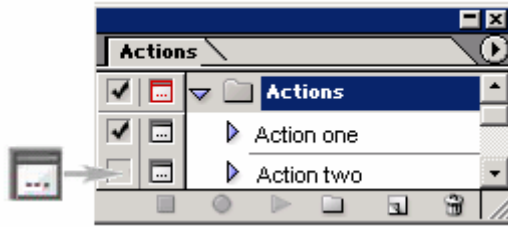


You have created type on a path. You want to move the type along the path. Which tool (s) should you use to drag the type?

- A. Move tool
- B. Path Type tool
- C. Horizontal or Vertical Type tool
- D. Path Selection or Direct Selection tool

**Answer: D**

**Question: 9**  
Exhibit.



In the exhibit, what does the icon on the left indicate?

- A. that the action is currently being recorded
- B. that all the steps in the action offer the user a dialog box
- C. that one or more, but not all, steps in the action offer the user a dialog box
- D. that the action is currently paused in playback, waiting for a response from the user

**Answer: C**

**Question: 10**

You are applying an action to a group of images using the Batch command. The action contains a Save As TIFF command, with specific options chosen. You want the processed files to be saved with those options, but to be renamed.

Which two options in the Batch dialog box should you choose? (Choose two.)

- A. Batch Rename
- B. Destination: Folder
- C. Include All Subfolders
- D. Destination: Save and Close
- E. Override Action "Save As" Commands

**Answer: A, B**

**Question: 11**

You are recording an action. During its playback, you want an image's magnification to be adjusted to fit the image on screen.

What should you do?

- A. choose View > Fit on Screen
- B. when you get to the point for the magnification change, choose View > Fit on Screen
- C. use the Insert Menu Item command from the Action palette menu, then choose View > Actual Pixels
- D. Use the Insert Menu Item command from the Action palette menu, then choose View > Fit on Screen

**Answer: D**

**Question: 12**

Exhibit.



## Pass4sure Certification Exam Features;

- Pass4sure offers over **2500** Certification exams for professionals.
- More than **98,800** Satisfied Customers Worldwide.
- Average **99.8%** Success Rate.
- Over **120** Global Certification Vendors Covered.
- Services of **Professional & Certified Experts** available via support.
- Free **90 days** updates to match real exam scenarios.
- **Instant Download Access!** No Setup required.
- Price as low as **\$19**, which is 80% more **cost effective** than others.
- **Verified answers** researched by industry experts.
- Study Material **updated** on regular basis.
- Questions / Answers are downloadable in **PDF** format.
- Mobile Device Supported (**Android, iPhone, iPod, iPad**)
- **No authorization** code required to open exam.
- **Portable** anywhere.
- **Guaranteed Success.**
- **Fast**, helpful support **24x7**.



View list of All certification exams offered;  
<http://www.ipass4sure.com/all exams.asp>

View list of All Study Guides (SG);  
<http://www.ipass4sure.com/study-guides.asp>

View list of All Audio Exams (AE);  
<http://www.ipass4sure.com/audio-exams.asp>

Download Any Certification Exam DEMO.  
<http://www.ipass4sure.com/samples.asp>

To purchase Full version of exam click below;  
<http://www.ipass4sure.com/all exams.asp>

3COM	CompTIA	Filemaker	IBM	LPI	OMG	Sun
ADOBE	ComputerAssociates	Fortinet	IISFA	McAfee	Oracle	Sybase
APC	CWNP	Foundry	Intel	McData	PMI	Symantec
Apple	DELL	Fujitsu	ISACA	Microsoft	Polycom	TeraData
BEA	ECCouncil	GuidanceSoftware	ISC2	Mile2	RedHat	TIA
BICSI	EMC	HDI	ISEB	NetworkAppliance	Sair	Tibco
CheckPoint	Enterasys	Hitachi	ISM	Network-General	SASInstitute	TruSecure
Cisco	ExamExpress	HP	Juniper	Nokia	SCP	Veritas
Citrix	Exin	Huawei	Legato	Nortel	See-Beyond	Vmware
CIW	ExtremeNetworks	Hyperion	Lotus	Novell	Google	

and many others.. See complete list [Here](#)

