

# **Examcollection**

<http://www.ipass4sure.com/examcollection.htm>



<http://www.ipass4sure.com>

# 920-245

**Nortel**

*Ethernet Switching*

<http://www.ipass4sure.com/exams.asp?examcode=920-245>

The 920-245 practice exam is written and formatted by Certified Senior IT Professionals working in today's prospering companies and data centers all over the world! The 920-245 Practice Test covers all the exam topics and objectives and will prepare you for success quickly and efficiently. The 920-245 exam is very challenging, but with our 920-245 questions and answers practice exam, you can feel confident in obtaining your success on the 920-245 exam on your FIRST TRY!

## Nortel 920-245 Exam Features

- Detailed questions and answers for 920-245 exam
- Try a demo before buying any Nortel exam
- 920-245 questions and answers, updated regularly
- Verified 920-245 answers by Experts and bear almost 100% accuracy
- 920-245 tested and verified before publishing
- 920-245 examcollection vce questions with exhibits
- 920-245 same questions as real exam with multiple choice options

Acquiring Nortel certifications are becoming a huge task in the field of I.T. More over these exams like 920-245 exam are now continuously updating and accepting this challenge is itself a task. This 920-245 test is an important part of Nortel certifications. We have the resources to prepare you for this. The 920-245 exam is essential and core part of Nortel certifications and once you clear the exam you will be able to solve the real life problems yourself. Want to take advantage of the Real 920-245 Test and save time and money while developing your skills to pass your Nortel 920-245 Exam? Let us help you climb that ladder of success and pass your 920-245 now!

# **DEMO EXAM**

For Full Version visit

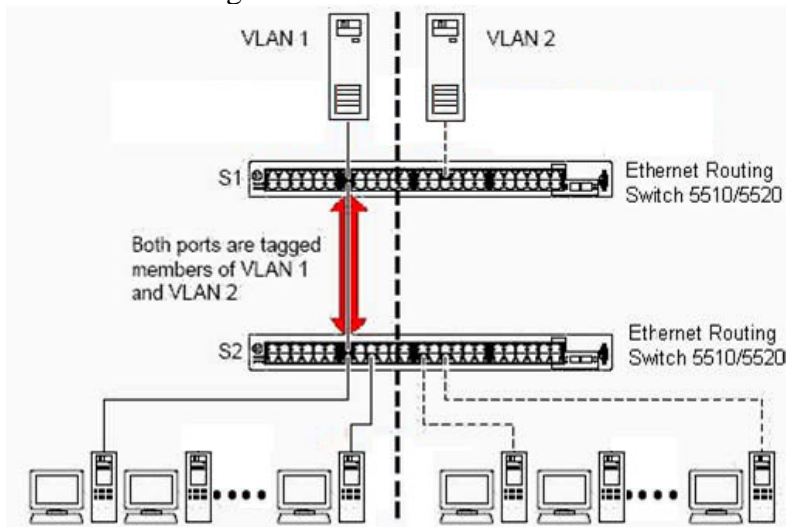
<http://www.ipass4sure.com/allexams.asp>

---

**QUESTION 1**

The exhibit shows VLANs spanning two Ethernet Routing Switch 5510/5520s. Both port 14 on S1 and port 13 on S2, identified by the red arrow, are tagged members of VLAN 1 and VLAN 2.

How is this configured?



- A. By ensuring that the tagging checkbox is checked on the configuration screens for VLAN 1 and VLAN 2.
- B. By enabling 802.1Q tagging on both port 14 of S1 and port 13 of S2.
- C. This VLAN configuration is incorrect and must be configured differently to work.
- D. Tagging is automatically configured because port 13 of S2 is already in VLAN 1.

Answer: B

---

**QUESTION 2**

You recently reset an Ethernet Routing Switch 5510 using 4.1 code to the factory default settings. You want to upgrade the code for the 5510 but do not have a console cable to do it. Which IP address must you use to perform this task?

- A. 192.168.1.1/24
- B. 192.168.192.168/24
- C. 192.168.10.1/24
- D. 192.168.168.192/24

Answer: B

---

**QUESTION 3**

Certkiller .com wants port mirroring configured on an Ethernet Switch 470-48T. They want port 23 configured as the monitor port to monitor all traffic received and transmitted between a workstation on port 24 (port Y) and a workstation on port 25 (port X). Once you access the "Port Mirroring Configuration" screen using the Console Interface

(CI) Menus, which field should you select?

- A. <->Port X or Port Y <->
- B. <->Port X and Port Y <->
- C. ->Port X or Port Y ->
- D. ->Port X and Port Y ->

Answer: B

---

**QUESTION 4**

An engineer configures a single instance of Virtual Router Redundancy Protocol (VRRP) across two Ethernet Routing Switch 8600s. One Ethernet Routing Switch 8600 is configured with a VRRP Priority of 255 and the other is configured with a VRRP Priority of 100. During testing the engineer notices that both Ethernet Routing Switch 8600s are in Master state. What is a possible cause for this?

- A. The Ethernet Routing Switch 8600 VRRP instances have been configured with the same VRID.
- B. A critical IP interface has not been configured for the Ethernet Routing Switch 8600 with a VRRP Priority of 100.
- C. VRRP has been configured on a VLAN on one 8600 and on a brouter port on the other 8600.
- D. The Ethernet Routing Switch 8600 VRRP instances have been configured with different VRIDs.

Answer: D

---

**QUESTION 5**

To monitor the performance of an Ethernet switched network, why would you use Enterprise Network Management System OmniView instead of Java Device Manager (JDM)?

- A. OmniView supports RMON while JDM does not.
- B. JDM is incapable of supporting the Business Policy Switch while OmniView supports it.
- C. OmniView can present statistics in both graphical and tabular formats while JDM only supports tabular formats.
- D. JDM works with individual network components while OmniView works with subnets and LAN segments.

Answer: D

---

**QUESTION 6**

Which three statements are true regarding RMON alarms? (Choose three.)

- A. Alarms can only be viewed by Device Manager.



## Pass4sure Certification Exam Features;

- Pass4sure offers over **2500** Certification exams for professionals.
- More than **98,800** Satisfied Customers Worldwide.
- Average **99.8%** Success Rate.
- Over **120** Global Certification Vendors Covered.
- Services of **Professional & Certified Experts** available via support.
- Free **90 days** updates to match real exam scenarios.
- **Instant Download Access!** No Setup required.
- Price as low as **\$19**, which is 80% more **cost effective** than others.
- **Verified answers** researched by industry experts.
- Study Material **updated** on regular basis.
- Questions / Answers are downloadable in **PDF** format.
- Mobile Device Supported (**Android, iPhone, iPod, iPad**)
- **No authorization** code required to open exam.
- **Portable** anywhere.
- **Guaranteed Success.**
- **Fast**, helpful support **24x7**.



View list of All certification exams offered;  
<http://www.ipass4sure.com/all exams.asp>

View list of All Study Guides (SG);  
<http://www.ipass4sure.com/study-guides.asp>

View list of All Audio Exams (AE);  
<http://www.ipass4sure.com/audio-exams.asp>

Download Any Certification Exam DEMO.  
<http://www.ipass4sure.com/samples.asp>

To purchase Full version of exam click below;  
<http://www.ipass4sure.com/all exams.asp>

3COM	CompTIA	Filemaker	IBM	LPI	OMG	Sun
ADOBE	ComputerAssociates	Fortinet	IISFA	McAfee	Oracle	Sybase
APC	CWNP	Foundry	Intel	McData	PMI	Symantec
Apple	DELL	Fujitsu	ISACA	Microsoft	Polycom	TeraData
BEA	ECCouncil	GuidanceSoftware	ISC2	Mile2	RedHat	TIA
BICSI	EMC	HDI	ISEB	NetworkAppliance	Sair	Tibco
CheckPoint	Enterasys	Hitachi	ISM	Network-General	SASInstitute	TruSecure
Cisco	ExamExpress	HP	Juniper	Nokia	SCP	Veritas
Citrix	Exin	Huawei	Legato	Nortel	See-Beyond	Vmware
CIW	ExtremeNetworks	Hyperion	Lotus	Novell	Google	

and many others.. See complete list [Here](#)

