

Examcollection

<http://www.ipass4sure.com/examcollection.htm>

70-459

Microsoft

*Transition Your MCITP: Database Administrator 2008
or MCITP Database Developer 2008 to MCSE: Data Platform*

The 70-459 practice exam is written and formatted by Certified Senior IT Professionals working in today's prospering companies and data centers all over the world! The 70-459 Practice Test covers all the exam topics and objectives and will prepare you for success quickly and efficiently. The 70-459 exam is very challenging, but with our 70-459 questions and answers practice exam, you can feel confident in obtaining your success on the 70-459 exam on your FIRST TRY!

Microsoft 70-459 Exam Features

- Detailed questions and answers for 70-459 exam
- Try a demo before buying any Microsoft exam
- 70-459 questions and answers, updated regularly
- Verified 70-459 answers by Experts and bear almost 100% accuracy
- 70-459 tested and verified before publishing
- 70-459 examcollection vce questions with exhibits
- 70-459 same questions as real exam with multiple choice options

Acquiring Microsoft certifications are becoming a huge task in the field of I.T. More over these exams like 70-459 exam are now continuously updating and accepting this challenge is itself a task. This 70-459 test is an important part of Microsoft certifications. We have the resources to prepare you for this. The 70-459 exam is essential and core part of Microsoft certifications and once you clear the exam you will be able to solve the real life problems yourself. Want to take advantage of the Real 70-459 Test and save time and money while developing your skills to pass your Microsoft 70-459 Exam? Let us help you climb that ladder of success and pass your 70-459 now!

DEMO EXAM

For Full Version visit

<http://www.ipass4sure.com/allexams.asp>

Section 1: Sec One (1 to 7)**Details:**Topic 1, A. Datum

Overview

General Overview

A. Datum Corporation has offices in Miami and Montreal.

The network contains a single Active Directory forest named adatum.com. The offices connect to each other by using a WAN link that has a 5-ms latency.

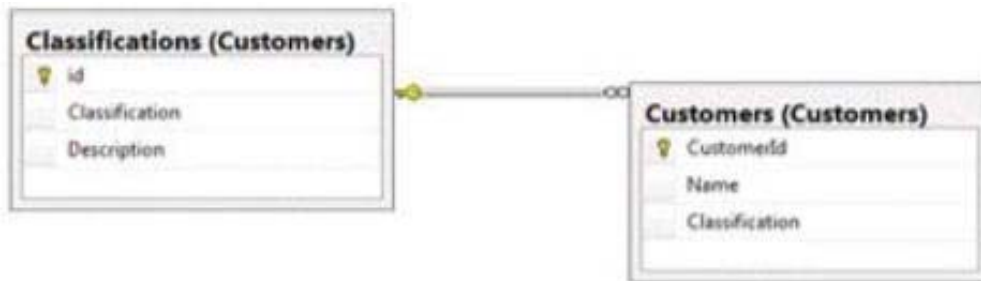
A. Datum standardizes its database platform by using SQL Server 2012 Standard edition.

Databases

Each office contains databases named Sales, Inventory, Customers, Products, Personnel, and Dev.

Servers and databases are managed by a team of database administrators. Currently, all of the database administrators have the same level of permissions on all of the servers and all of the databases.

The Customers database contains two tables named Customers and Classifications. The following graphic shows the relevant portions of the tables:



The following table shows the current data in the Classifications table:

id	Classification	Description
1	Platinum	Yearly sales over 1,000,000
2	Gold	Yearly sales over 500,000
3	Silver	Yearly sales over 100,000

The Inventory database is used mainly for reports. The database is recreated every day. A full backup of the database currently takes three hours to complete.

Stored Procedures

A stored procedure named sp1 generates millions of rows of data for multiple reports. Sp1 combines data from five different tables from the Sales and Customers databases in a table named Table1.

After Table1 is created, the reporting process reads data from a table in the Products database and searches for information in Table1 based on input from the Products table. After the process is complete, Table1 is deleted.

A stored procedure named sp2 is used to generate a product list. Sp2 takes several minutes to run due to locks on the tables the procedure accesses.

A stored procedure named sp3 is used to update prices. Sp3 is composed of several UPDATE statements called in sequence from within a transaction. Currently, if one of the UPDATE statements fails, the stored procedure continues to execute.

A stored procedure named sp4 calls stored procedures in the Sales, Customers, and Inventory databases. The nested stored procedures read tables from the Sales, Customers, and Inventory databases. Sp4 uses an EXECUTE AS clause.

A stored procedure named sp5 changes data in multiple databases. Security checks are performed each time sp5 accesses a database.

You suspect that the security checks are slowing down the performance of sp5.

All stored procedures accessed by user applications call nested stored procedures. The nested stored procedures are never called directly.

Design Requirements

Data Recovery

You must be able to recover data from the Inventory database if a storage failure occurs.

You have a Recovery Point Objective (RPO) of one hour.

You must be able to recover data from the Dev database if data is lost accidentally. You have a

Recovery Point Objective (RPO) of one day.

Classification Changes

You plan to change the way customers are classified. The new classifications will have four levels based on the number of orders. Classifications may be removed or added in the future.

Management requests that historical data be maintained for the previous classifications.

Security

A group of junior database administrators must be able to view the server state of the SQL Server instance that hosts the Sales database. The junior database administrators will not have any other administrative rights.

QUESTION: 1

You need to recommend a solution for the planned changes to the customer classifications. What should you recommend? (Each correct answer presents part of the solution. Choose all that apply.)

- A. Add a table to track any changes made to the classification of each customer.
- B. Add columns for each classification to the Customers table.
- C. Implement change data capture.
- D. Add a row to the Customers table each time a classification changes.
- E. Add a column to the Classifications table to track the status of each classification.

Answer: A, C

QUESTION: 2

You need to recommend a change to sp3 to ensure that the procedure completes only if all of the UPDATE statements complete. Which change should you recommend?

- A. Set the IMPLICIT_TRANSACTIONS option to off.
- B. Set the XACT_ABORT option to off
- C. Set the IMPLICIT_TRANSACTIONS option to on.
- D. Set the XACT_ABORT option to on.

Answer: D

QUESTION: 3

You need to recommend a solution to meet the security requirements of the junior database administrators. What should you include in the recommendation?

- A. a shared login
- B. a database role
- C. a credential
- D. a server role

Answer: D

QUESTION: 4

You need to recommend a solution to minimize the amount of time it takes to execute sp1. With what should you recommend replacing Table1?

- A. a temporary table
- B. a function
- C. a view
- D. a table variable

Answer: C

QUESTION: 5

You need to recommend a disaster recovery strategy for the Inventory database. What should you include in the recommendation?

- A. Log shipping

- B. Always on availability groups
- C. SQL Server Failover Clustering
- D. Peer-to-peer replication

Answer: A

QUESTION: 6

You need to recommend a solution to ensure that sp4 adheres to the security requirements. What should you include in the recommendation?

- A. Configure data manipulation language(DML) triggers.
- B. Enable SQL Server Audit.
- C. Enable trace flags.
- D. Enable C2 audit tracing.

Answer: B

QUESTION: 7

You need to recommend a change to sp3 to ensure that the procedure continues to execute even if one of the UPDATE statements fails. Which change should you recommend?

- A. Set the IMPLICIT_TRANSACTIONS option to on.
- B. Set the XACT_ABORT option to off.
- C. Set the IMPLICIT_TRANSACTIONS option to off.
- D. Set the XACT_ABORT option to on.

Answer: B

Section 2: Sec Two (8 to 12)

Details:Topic 2, Contoso Ltd

Overview

Application Overview

Contoso, Ltd., is the developer of an enterprise resource planning (ERP) application. Contoso is designing a new version of the ERP application. The previous version of the ERP application used SQL Server 2008 R2. The new version will use SQL Server 2012. The ERP application relies on an import process to load supplier data. The import process updates thousands of rows simultaneously, requires exclusive access to the database, and runs daily.



Pass4sure Certification Exam Features;

- Pass4sure offers over **2500** Certification exams for professionals.
- More than **98,800** Satisfied Customers Worldwide.
- Average **99.8%** Success Rate.
- Over **120** Global Certification Vendors Covered.
- Services of **Professional & Certified Experts** available via support.
- Free **90 days** updates to match real exam scenarios.
- **Instant Download Access!** No Setup required.
- Price as low as **\$19**, which is 80% more **cost effective** than others.
- **Verified answers** researched by industry experts.
- Study Material **updated** on regular basis.
- Questions / Answers are downloadable in **PDF** format.
- Mobile Device Supported (**Android, iPhone, iPod, iPad**)
- **No authorization** code required to open exam.
- **Portable** anywhere.
- **Guaranteed Success.**
- **Fast**, helpful support **24x7**.



View list of All certification exams offered;
<http://www.ipass4sure.com/all exams.asp>

View list of All Study Guides (SG);
<http://www.ipass4sure.com/study-guides.asp>

View list of All Audio Exams (AE);
<http://www.ipass4sure.com/audio-exams.asp>

Download Any Certification Exam DEMO.
<http://www.ipass4sure.com/samples.asp>

To purchase Full version of exam click below;
<http://www.ipass4sure.com/all exams.asp>

3COM	CompTIA	Filemaker	IBM	LPI	OMG	Sun
ADOBE	ComputerAssociates	Fortinet	IISFA	McAfee	Oracle	Sybase
APC	CWNP	Foundry	Intel	McData	PMI	Symantec
Apple	DELL	Fujitsu	ISACA	Microsoft	Polycom	TeraData
BEA	ECCouncil	GuidanceSoftware	ISC2	Mile2	RedHat	TIA
BICSI	EMC	HDI	ISEB	NetworkAppliance	Sair	Tibco
CheckPoint	Enterasys	Hitachi	ISM	Network-General	SASInstitute	TruSecure
Cisco	ExamExpress	HP	Juniper	Nokia	SCP	Veritas
Citrix	Exin	Huawei	Legato	Nortel	See-Beyond	Vmware
CIW	ExtremeNetworks	Hyperion	Lotus	Novell	Google	

and many others.. See complete list [Here](#)

