

Examcollection

<http://www.ipass4sure.com/examcollection.htm>

70-412

Microsoft

Configuring Advanced Windows Server 2012 Services

The 70-412 practice exam is written and formatted by Certified Senior IT Professionals working in today's prospering companies and data centers all over the world! The 70-412 Practice Test covers all the exam topics and objectives and will prepare you for success quickly and efficiently. The 70-412 exam is very challenging, but with our 70-412 questions and answers practice exam, you can feel confident in obtaining your success on the 70-412 exam on your FIRST TRY!

Microsoft 70-412 Exam Features

- Detailed questions and answers for 70-412 exam
- Try a demo before buying any Microsoft exam
- 70-412 questions and answers, updated regularly
- Verified 70-412 answers by Experts and bear almost 100% accuracy
- 70-412 tested and verified before publishing
- 70-412 examcollection vce questions with exhibits
- 70-412 same questions as real exam with multiple choice options

Acquiring Microsoft certifications are becoming a huge task in the field of I.T. More over these exams like 70-412 exam are now continuously updating and accepting this challenge is itself a task. This 70-412 test is an important part of Microsoft certifications. We have the resources to prepare you for this. The 70-412 exam is essential and core part of Microsoft certifications and once you clear the exam you will be able to solve the real life problems yourself. Want to take advantage of the Real 70-412 Test and save time and money while developing your skills to pass your Microsoft 70-412 Exam? Let us help you climb that ladder of success and pass your 70-412 now!

DEMO EXAM

For Full Version visit

<http://www.ipass4sure.com/allexams.asp>

QUESTION: 1

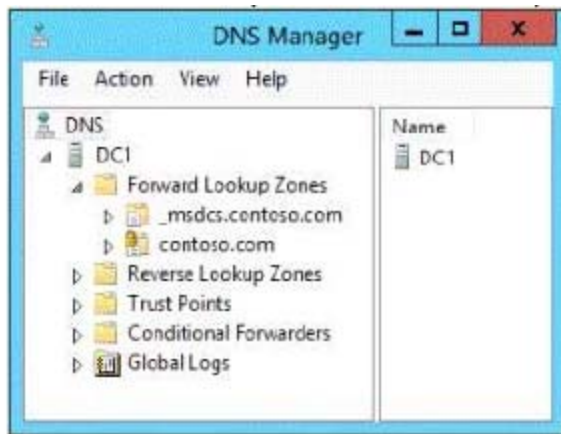
You have a DHCP server named Server1. Server1 has one network adapter. Server1 is located on a subnet named Subnet1. Server1 has scope named Scope1. Scope1 contains IP addresses for the 192.168.1.0/24 network. Your company is migrating the IP addresses on Subnet1 to use a network ID of 10.10.0.0/16. On Server1 you create a scope named Scope2. Scope2 contains IP addresses for the 10.10.0.0/16 network. You need to ensure that clients on Subnet1 can receive IP addresses from either scope. What should you create on Server1?

- A. A multicast scope
- B. A scope
- C. A superscope
- D. A split-scope

Answer: C

QUESTION: 2

Your network contains an Active Directory domain named adatum.com. The domain contains a domain controller named DC1 that runs Windows Server 2012. On Dc1, you open DNS Manager as shown in the exhibit. (Click the Exhibit button.)



You need to change the zone type of the contoso.com zone from an Active Directory-integrated zone to a standard primary zone. What should you do before you change the zone type?

- A. Unsign the zone.
- B. Modify the Zone Signing Key (ZSK).
- C. Modify the Key Signing Key (KSK).
- D. Change the Key Master.

Answer: A

QUESTION: 3

You have a server named Server1 that runs Windows Server 2012. Server1 has the DNS Server server role installed. You need to configure Server1 to resolve queries for single-label DNS names. Which two actions should you perform? (Each correct answer presents part of the solution. Choose two.)

- A. Run the Set-DNSServerGlobalNameZone cmdlet.
- B. Modify the DNS suffix search list setting.
- C. Modify the Primary DNS Suffix Devolution setting.
- D. Create a zone named ".".
- E. Create a zone named GlobalNames.
- F. Run the Set-DNSServerRootHint cmdlet.

Answer: B, D

QUESTION: 4

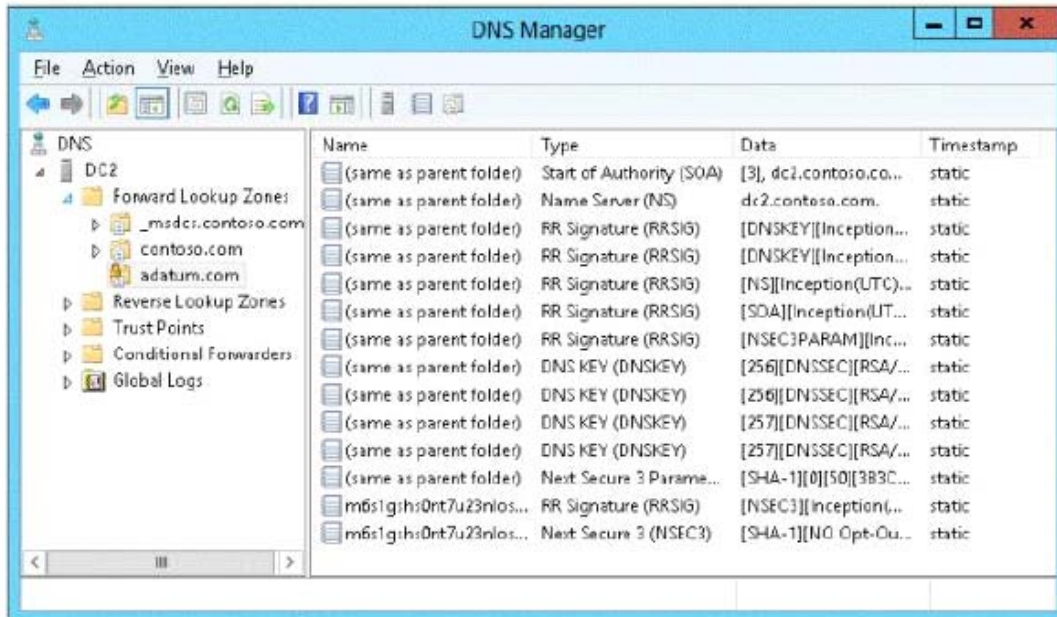
Your network contains an Active Directory domain named contoso.com. The domain contains two servers named Server1 and Server2 that run Windows Server 2012. Server1 has the IP Address Management (IPAM) Server feature installed. Server2 has the DHCP Server server role installed. A user named User1 is a member of the IPAM Users group on Server1. You need to ensure that User1 can use IPAM to modify the DHCP scopes on Server2. The solution must minimize the number of permissions assigned to User1. To which group should you add User1?

- A. DHCP Administrators on Server2
- B. IPAM ASM Administrators on Server1
- C. IPAMUG in Active Directory
- D. IPAM MSM Administrators on Server1

Answer: A

QUESTION: 5

You have a server named DC2 that runs Windows Server 2012. DC2 contains a DNS zone named adatum.com. The adatum.com zone is shown in the exhibit. (Click the Exhibit button.)



You need to configure DNS clients to perform DNSSEC validation for the adatum.com DNS domain. What should you configure?

- A. The Network Location settings
- B. A Name Resolution Policy
- C. The DNS Client settings
- D. The Network Connection settings

Answer: B

QUESTION: 6

Your network contains an Active Directory domain named contoso.com. The domain contains two servers named Server1 and Server2 that run Windows Server 2012. Server1 has the DHCP Server server role installed. Server2 has the Hyper-V server role installed. Server2 has an IP address of 192.168.10.50. Server1 has a scope named Scope1 for the 192.168.10.0/24 network. You plan to deploy 20 virtual machines on Server2 that will be connected to the external network. The MAC addresses for the virtual machines will begin with 00-15-SD-83-03. You need to configure Server1 to offer the virtual machines IP addresses from 192.168.10.200 to 192.168.10.21g. Physical computers on the network must be offered IP addresses outside this range. You want to achieve this goal by using the minimum amount of administrative effort. What should you do from the DHCP console?

- A. Create reservations.
- B. Create a policy.
- C. Delete Scope1 and create two new scopes.
- D. Configure Allow filters and Deny filters.

Answer: B

QUESTION: 7

Your network contains an Active Directory domain named contoso.com. The domain contains two servers named Server1 and Server2. Both servers have the IP Address Management (IPAM) Server feature installed. You have a support technician named Tech1. Tech1 is a member of the IPAM Administrators group on Server1 and Server2. You need to ensure that Tech 1 can use Server Manager on Server1 to manage IPAM on Server2. To which group on Server2 should you add Tech1.

- A. Remote Management Users
- B. IPAM MSM Administrators
- C. IPAM Administrators
- D. WinRM Remote WM1 Users

Answer: D

QUESTION: 8

Your network contains two Active Directory forests named contoso.com and adatum.com. All of the domain controllers in both of the forests run Windows Server 2012. The adatum.com domain contains a file server named Servers. Adatum.com has a one-way forest trust to contoso.com. A contoso.com user name User10 attempts to access a shared folder on Servers and receives the error message shown in the exhibit. (Click the Exhibit button.)



Pass4sure Certification Exam Features;

- Pass4sure offers over **2500** Certification exams for professionals.
- More than **98,800** Satisfied Customers Worldwide.
- Average **99.8%** Success Rate.
- Over **120** Global Certification Vendors Covered.
- Services of **Professional & Certified Experts** available via support.
- Free **90 days** updates to match real exam scenarios.
- **Instant Download Access!** No Setup required.
- Price as low as **\$19**, which is 80% more **cost effective** than others.
- **Verified answers** researched by industry experts.
- Study Material **updated** on regular basis.
- Questions / Answers are downloadable in **PDF** format.
- Mobile Device Supported (**Android, iPhone, iPod, iPad**)
- **No authorization** code required to open exam.
- **Portable** anywhere.
- **Guaranteed Success.**
- **Fast**, helpful support **24x7**.



View list of All certification exams offered;
<http://www.ipass4sure.com/allexams.asp>

View list of All Study Guides (SG);
<http://www.ipass4sure.com/study-guides.asp>

View list of All Audio Exams (AE);
<http://www.ipass4sure.com/audio-exams.asp>

Download Any Certification Exam DEMO.
<http://www.ipass4sure.com/samples.asp>

To purchase Full version of exam click below;
<http://www.ipass4sure.com/allexams.asp>

3COM	CompTIA	Filemaker	IBM	LPI	OMG	Sun
ADOBE	ComputerAssociates	Fortinet	IISFA	McAfee	Oracle	Sybase
APC	CWNP	Foundry	Intel	McData	PMI	Symantec
Apple	DELL	Fujitsu	ISACA	Microsoft	Polycom	TeraData
BEA	ECCouncil	GuidanceSoftware	ISC2	Mile2	RedHat	TIA
BICSI	EMC	HDI	ISEB	NetworkAppliance	Sair	Tibco
CheckPoint	Enterasys	Hitachi	ISM	Network-General	SASInstitute	TruSecure
Cisco	ExamExpress	HP	Juniper	Nokia	SCP	Veritas
Citrix	Exin	Huawei	Legato	Nortel	See-Beyond	Vmware
CIW	ExtremeNetworks	Hyperion	Lotus	Novell	Google	

and many others.. See complete list [Here](#)

