

# **Examcollection**

<http://www.ipass4sure.com/examcollection.htm>



<http://www.ipass4sure.com>

# 70-350

## Microsoft

*Implementing Microsoft Internet Security and Acceleration  
(ISA) Server 2004*

<http://www.ipass4sure.com/exams.asp?examcode=70-350>

Thousands of IT Professionals before you have already passed their 70-350 certification exams using the Microsoft 70-350 Practice Exam from [ipass4sure.com](http://www.ipass4sure.com). Once you start using our 70-350 exam questions you simply can't stop! You are guaranteed to pass your Microsoft 70-350 test with ease and in your first attempt.

Here's what you can expect from the [ipass4sure](http://www.ipass4sure.com) Microsoft 70-350 course:

- \* Up-to-Date Microsoft 70-350 questions designed to familiarize you with the real exam.
- \* 100% correct Microsoft 70-350 answers you simply can't find in other 70-350 courses.
- \* All of our tests are easy to download. Your file will be saved as a 70-350 PDF.
- \* Microsoft 70-350 brain dump free content featuring the real 70-350 test questions.

Microsoft 70-350 Certification Exam is of core importance both in your Professional life and Microsoft Certification Path. With Microsoft Certification you can get a good job easily in the market and get on your path for success. Professionals who passed Microsoft 70-350 Certification Exam are an absolute favorite in the industry. If you pass Microsoft 70-350 Certification Exam then career opportunities are open for you.

Our 70-350 Questions & Answers provide you an easy solution to your Microsoft 70-350 Exam Preparation. Our 70-350 Q&As contains the most updated Microsoft 70-350 real tests. You can use our 70-350 Q&As on any PC with most versions of Acrobat Reader and prepare the exam easily.

# **DEMO EXAM**

For Full Version visit

<http://www.ipass4sure.com/allexams.asp>

**QUESTION 1**

You work as the network administrator at Certkiller .com. The Certkiller .com network consists of a single Active Directory domain named Certkiller .com. All servers on the Certkiller .com network run Windows Server 2003 and all client computers run Windows XP Professional.

The Certkiller .com network recently deployed three ISA Server 2004 computers to the domain which will be used by the client computers for Internet access. You have received instruction from the CIO to plan the implementation to ensure that the client computers view all three servers as one.

You are additionally required to ensure that the load on ISA Server 2004 is distributed among the three ISA Server 2004 computers.

What should you do?

- A. The Windows Server 2003 computer should be configured as a Network Load Balancing (NLB) cluster
- B. The Windows Server 2003 computer should be configured as a three-node Active/Passive cluster
- C. All the Windows Server 2003 computers should be configured as stand-alone servers
- D. All the Windows Server 2003 computers should be configured with the same IP address

Answer: A

Explanation: In the scenario the host record should be configured with the virtual IP address to the external interface of the NLB cluster. Since NLB is used as a cluster technique which is used to allow two or more servers to share the processing load it should be used in the scenario.

Incorrect Answers:

B: The configuration made with a three-node Active/Passive cluster should not be considered in the scenario because it will not help in any way.

C: The stand-alone server configuration should not be considered in the scenario because the server that is not a member of the domain will provide access to all resources that are available in it.

D: The configuration should not be used at all in the scenario as you will be responsible for have creating IP address conflicts on the network.

---

**QUESTION 2**

You work as the network administrator at Certkiller .com. The Certkiller .com network consists of a single Active Directory domain named Certkiller .com. All servers on the Certkiller .com network run Windows Server 2003 and all client computers run Microsoft Windows NT 4.0 with Microsoft Proxy 2.0 Winsock Proxy client installed and the other computers run Windows XP Professional and all have the ISA Server 2000 Firewall Client installed.

The Certkiller .com network contains an ISA Server 2004 server named Certkiller -SR01 which is used for Internet access. You have received instruction

from the CIO to configure all client computers to use encryption while communicating with Certkiller -SR01.

What should you do (Choose three)

- A. ISA Server 2004 must be configured to enable Require all users to authenticate setting.
- B. The Firewall client settings should be configured on ISA Server 2004 to enable the Allow non-encrypted Firewall client connections setting.
- C. The ISA Server 2000 Firewall Client software should be upgraded on the Windows XP Professional computers to ISA Server 2004 Firewall Client.
- D. The Winsock Proxy client should be uninstalled from the client computers running Microsoft Windows NT 4.0 and install the ISA Server 2004 Firewall Client.
- E. An in-place upgrade should be performed on Certkiller -SR01 by using the ISA Server 2004 Migration Tool.

Answer: C, D, E

Explanation:

In the scenario you should perform an in-place upgrade and uninstall the Winsock Proxy client from the computers and install the ISA Server 2004 Firewall Client software on both workstation computers NT 4.0 and XP Professional as ISA Server 2000 does not have encryption.

Incorrect Answers:

A: The setting should not be configured in the scenario because the settings are used for Web proxy clients and the ISA server will prompt for user credentials.

B: This setting should not be considered in the scenario as you are required to provide encryption and the Firewall Client in question should not be configured this way.

---

### QUESTION 3

You work as the network administrator at Certkiller .com. The Certkiller .com network consists of a single Active Directory domain named Certkiller .com. The client computers at Certkiller .com are running Windows XP Professional. The CIO of Certkiller .com has asked you to put into operation an ISA Server 2004. The implementation should act as a SecureNAT firewall for client computers on the Certkiller .com network. You want the ISA Server 2004 implementation to consist of a Windows Server 2003 Network Load Balancing cluster.

Certkiller .com wants their customers to be load balanced across the Network Load Balancing cluster when they connect by using DNS.

Before you install ISA Server 2004 you need to plan the external DNS implementation.

What should you do?

- A. You need to create three service locator (SRV) resource records and configure each record to use the \_HTTP service and to reference the IP address of one of the internal interfaces of the Network Load Balancing cluster nodes.
- B. You need to create three host (A) resource records and configure each record with the

IP address of one of the external interfaces of the Network Load Balancing cluster nodes.

C. You need to create one host (A) resource record and to configure the record with the virtual IP address that is assigned to the external interface of the Network Load Balancing cluster.

D. You need to create one host (A) resource record and to configure the record with the virtual IP address that is assigned to the internal interface of the Network Load Balancing cluster.

Answer: C

Explanation: Network load balancing is a cluster of servers that provide the same services. By using network load balancing, users contact the IP address of the cluster in order to use the services that are shared by the cluster.

It provides for load sharing between NLB cluster members, and also provides for redundancy if one of the NLB members becomes unavailable. Only the Enterprise version of ISA Server 2004 natively supports NLB.

---

#### **QUESTION 4**

You work as the network administrator at Certkiller .com. The Certkiller .com network consists of a single Active Directory domain named Certkiller .com. All servers on the Certkiller .com network run Windows Server 2003 and all client computers run Windows XP Professional.

The Certkiller .com network recently deployed 4 Microsoft ISA 2004 server computers that are to be used for connecting to the Internet. You decided to configure the ISA server computers as a Network Load Balancing cluster.

You have received instruction from the CIO to allow the client computers to connect to the NLB cluster by using DNS and to load balance the network traffic to the ISA server computers across the NLB cluster. You firstly create a host (A) resource record for the NLB cluster and need to decide what to do next.

What should you do?

A. DNS round-robin should be used to map the cluster's FQDN to the IP addresses of each network adapter of the NLB cluster nodes.

B. The host record must be configured with the IP address assigned to one of the external interfaces of the NLB cluster nodes.

C. The host record must be configured with the IP address assigned to one of the internal interfaces of the NLB cluster nodes.

D. The host record must be configured with the virtual IP address of the NLB cluster.

Answer: D

Explanation: In the scenario the host record should be configured with the virtual IP address to the external interface of the NLB cluster. Since NLB is used as a cluster technique which is used to allow two or more servers to share the processing load it should be used in the scenario.

Incorrect Answers:

A: DNS round-robin should not be used in the scenario because the NLB clusters FQDN should be mapped to the cluster's virtual IP address.

B, C: The host record should not be configured with the IP Address assigned to the internal or external NLB cluster interfaces because the internal IP address is used for internal communication and the second interface is not configured with a unique IP address.

---

**QUESTION 5**

You work as the network administrator at Certkiller .com. The Certkiller .com network consists of a single Active Directory domain named Certkiller .com. All servers on the Certkiller .com network run Windows Server 2003 and all client computers run Windows XP Professional.

The Certkiller .com network recently deployed an ISA Server 2004 computer to the domain named Certkiller -SR01 which will be used by the client computers for Internet access.

You have received instruction from the CIO to secure Certkiller -SR01 before it starts providing Internet access to client computers on the network an you need to know how to configure security for the ISA Server 2004 computer.

What should you do? (Choose TWO.)

- A. All users should be granted Deny access to this computer from the network right.
- B. The Allow log on locally right should be granted only to the Administrators group.
- C. The Allow log on locally right should be granted only to the Authenticated Users group.
- D. The Remote Access Connection Manager service should be disabled on Certkiller -SR01.

Answer: A, B

Explanation: In the scenario you should grant only the Administrators group the Allow log on locally right and the Deny access to this computer from the network must be assigned to all users as this will ensure that users in the administrative group has the rights to manage monitor and configure the ISA server.

Incorrect Answers:

C, D: The Allow log on locally right should not be assigned in the scenario because the authenticated users group contains all the users in the domain who are authenticated allowing every authenticated user to access or log on locally to the ISA server.

---

**QUESTION 6**

You work as the network administrator at Certkiller .com. The Certkiller .com network consists of a single Active Directory domain named Certkiller .com. All servers on the Certkiller .com network run Windows Server 2003 and all client computers run Windows XP Professional.

The Certkiller .com network recently deployed an ISA Server 2004 computer to the domain which will be used by the client computers for Internet access. The Firewall client installation share will be placed on the ISA Server 2004 computer and the

clients will connect to the ISA Server 2004 and install the firewall client software from the share and are required to know which service to enable to allow client computers to connect to ISA Server 2004 and install Firewall Client software from the share.

What should you do?

- A. Enable the Windows Installer service.
- B. Enable the Workstation service.
- C. Enable the Net Logon service.
- D. Enable the Server service.

Answer: D

Explanation:

The Server service should be enabled in the scenario because the service is used to connect to the ISA 2004 Server and install Firewall Client software from the Firewall Client Installation share on the network.

Incorrect Answers:

A: The Windows Installer service should not be enabled in the scenario because the service adds, modifies and removes applications provided as .msi packages

B: The Workstation service should not be enabled in the scenario because the service creates and maintains client network connections to remote servers.

C: Net Logon should not be enabled in the scenario because the service maintains a secure channel between the client computer and the domain controller to authenticate users and services.

---

## QUESTION 7

You work as the network administrator at Certkiller .com. The Certkiller .com network consists of a single Active Directory domain named Certkiller .com. All servers on the Certkiller .com network run Windows Server 2003 and all client computers run Windows XP Professional.

The Certkiller .com network contains an ISA Server 2004 computer named Certkiller -SR01 configured with the external and internal network adapters IP addresses of 100.100.10.2 and 192.168.100.2 respectively.

During the course of the day you discover that Certkiller -SR01 is unable to receive SMTP traffic from the Internet. You are required to query a single TCP port to verify if Certkiller -SR01 is listening on TCP port 25 or not.

What should you do?

- A. The portqry n 100.100.10.2p tcp e 25 command should be run on Certkiller -SR01.
- B. The portqry n 100.100.10.2 p tcp r 25 command should be run on Certkiller -SR01.
- C. The netstat a p tcp command should be run on Certkiller -SR01.
- D. The netstat a p tcp command should be run on Certkiller -SR01.

Answer: A



## Explanation:

In the scenario the best option is to run the portqry n 100.100.10.2 p tcp e 25 command on Certkiller -SR01 as this command is capable of querying a single port to check if the server is listening on that particular port in the scenario.

## Incorrect Answers:

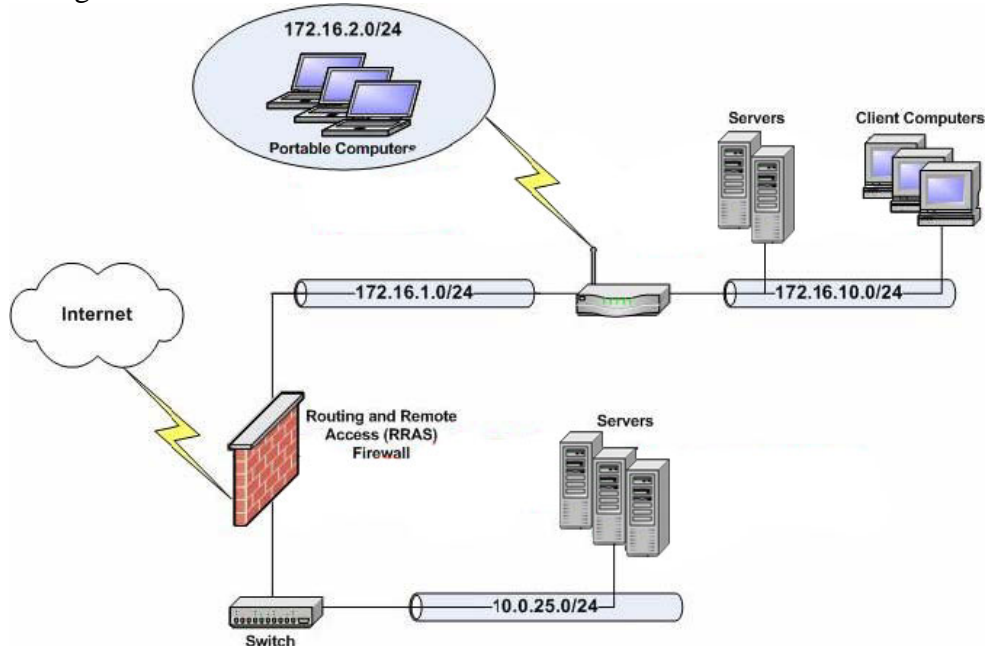
B: This command should not be used in the scenario because you want to scan a single port and the command is used to scan a range of ports.

C: This command should not be used in the scenario because the command is used to display all the connections and listening ports for TCP.

D: This command should not be considered for the scenario because the command is used to display all the addresses and port numbers in a numerical form for TCP.

**QUESTION 8**

Certkiller .com has employed you as a network administrator. The Certkiller .com network consists of a single Active Directory domain named Certkiller .com. The client computers at Certkiller .com are running Windows XP Professional. The Certkiller .com network also contains a server named Certkiller -SR24 which is set up as a Routing and Remote Access server. The Certkiller .com network is configured as seen in the exhibit:



You are planning to upgrade Certkiller -SR24 to ISA Server 2004. To upgrade to ISA Server 2004 you need to configure the Internal network and take into consideration the creation of access rules that are specific for each subnet.

Which of the following IP address ranges should you use? (Each correct answer presents part of the solution. (Choose THREE))

- A. 10.0.25.1 - 10.0.25.255.
- B. 172.16.1.0 - 172.16.1.255.
- C. 172.16.2.0 - 172.16.2.255.
- D. 172.16.10.0 - 172.16.10.255.

SAMPLE EXAM



## Pass4sure \$89 Lifetime Membership Features;

- Pass4sure \$89 Lifetime Membership includes Over **2500** Exams in One Price.
- **All** Pass4sure **Questions and Answers** are included in \$89 package.
- **All** Pass4sure audio exams are included **free** in package (See List).
- **All** Pass4sure study guides are included **free** in package (See List).
- **Lifetime** login access, no hidden fee, no login expiry.
- **Free updates** for Lifetime.
- **Free Download Access** to All new exams added in future.
- Accurate answers with **explanations** (If applicable).
- **Verified answers** researched by industry experts.
- Study Material **updated** on regular basis.
- Questions, Answers and Study Guides are downloadable in **PDF** format.
- Audio Exams are downloadable in **MP3** format.
- **No authorization** code required to open exam.
- **Portable** anywhere.
- 100% success **Guarantee**.
- **Fast**, helpful support **24x7**.

View list of All exams (Q&A) provided in \$89 membership;

<http://www.ipass4sure.com/allexams.asp>

View list of All Study Guides (SG) provided FREE for members;

<http://www.ipass4sure.com/study-guides.asp>

View list of All Audio Exams (AE) provided FREE for members;

<http://www.ipass4sure.com/audio-exams.asp>

Download All Exams Sample QAs.

<http://www.ipass4sure.com/samples.asp>

To purchase \$89 Lifetime Full Access Membership click here (One time fee)

<https://www.regnow.com/softsell/nph-softsell.cgi?item=30820-3>

3COM	CompTIA	Filemaker	IBM	LPI	OMG	Sun
ADOBE	ComputerAssociates	Fortinet	IISFA	McAfee	Oracle	Sybase
APC	CWNP	Foundry	Intel	McData	PMI	Symantec
Apple	DELL	Fujitsu	ISACA	Microsoft	Polycom	TeraData
BEA	ECCouncil	GuidanceSoftware	ISC2	Mile2	RedHat	TIA
BICSI	EMC	HDI	ISEB	NetworkAppliance	Sair	Tibco
CheckPoint	Enterasys	Hitachi	ISM	Network-General	SASInstitute	TruSecure
Cisco	ExamExpress	HP	Juniper	Nokia	SCP	Veritas
Citrix	Exin	Huawei	Legato	Nortel	See-Beyond	Vmware
CIW	ExtremeNetworks	Hyperion	Lotus	Novell	SNIA	

and many others.. See complete list [Here](#)

