

Examcollection

<http://www.ipass4sure.com/examcollection.htm>



<http://www.ipass4sure.com>

70-306

Microsoft

Developing Windows - based Applications with Visual Basic .NET

<http://www.ipass4sure.com/exams.asp?examcode=70-306>

Thousands of IT Professionals before you have already passed their 70-306 certification exams using the Microsoft 70-306 Practice Exam from ipass4sure.com. Once you start using our 70-306 exam questions you simply can't stop! You are guaranteed to pass your Microsoft 70-306 test with ease and in your first attempt.

Here's what you can expect from the ipass4sure Microsoft 70-306 course:

- * Up-to-Date Microsoft 70-306 questions designed to familiarize you with the real exam.
- * 100% correct Microsoft 70-306 answers you simply can't find in other 70-306 courses.
- * All of our tests are easy to download. Your file will be saved as a 70-306 PDF.
- * Microsoft 70-306 brain dump free content featuring the real 70-306 test questions.

Microsoft 70-306 Certification Exam is of core importance both in your Professional life and Microsoft Certification Path. With Microsoft Certification you can get a good job easily in the market and get on your path for success. Professionals who passed Microsoft 70-306 Certification Exam are an absolute favorite in the industry. If you pass Microsoft 70-306 Certification Exam then career opportunities are open for you.

Our 70-306 Questions & Answers provide you an easy solution to your Microsoft 70-306 Exam Preparation. Our 70-306 Q&As contains the most updated Microsoft 70-306 real tests. You can use our 70-306 Q&As on any PC with most versions of Acrobat Reader and prepare the exam easily.

DEMO EXAM

For Full Version visit

<http://www.ipass4sure.com/allexams.asp>

QUESTION 1:

You use Visual Studio .NET to create a Windows-based application for Certkiller Inc. The application includes a form that contains several controls, including a button named exitButton. After you finish designing the form, you select all controls and then select Lock Controls from the Format menu.

Later, you discover that exitButton is too small. You need to enlarge its vertical dimension with the least possible effort, and without disrupting the other controls. First you select exitButton in the Windows Forms Designer. What should you do next?

- A. Set the Locked property to False.
Set the Size property to the required size.
Set the Locked property to True.
- B. Set the Locked property to False.
Use the mouse to resize the control.
Set the Locked property to True.
- C. Set the Size property to the required size.
- D. Use the mouse to resize the control.

Answer: C

QUESTION 2:

You use Visual Studio .NET to create a Windows-based application called Certkiller Mortgage. The main form of the application contains several check boxes that correspond to application settings. One of the CheckBox controls is named advancedCheckBox. The caption for advancedCheckBox is Advanced.

You must enable users to select or clear this check box by pressing ALT+A. Which two actions should you take? (Each correct answer presents part of the solution. Choose two)

- A. Set advancedCheckBox.AutoCheck to True.
- B. Set advancedCheckBox.AutoCheck to False.
- C. Set advancedCheckBox.Text to "&Advanced".
- D. Set advancedCheckBox.Tag to "&Advanced".
- E. Set advancedCheckBox.CheckState to Unchecked.
- F. Set advancedCheckBox.CheckState to Indeterminate.
- G. Set advancedCheckBox.Appearance to Button.
- H. Set advancedCheckBox.Appearance to Normal.

Answer: A, C

Explanation:

A: The AutoCheck property must be set to True so that the CheckBox automatically is

changed when the check box is accessed.

C: The Text property contains the text associated with this control. By using the &-sign we define a shortcut command for this control. "@Advanced" defines the shortcut ALT+A.

Reference:

.NET Framework Class Library, CheckBox Properties

.NET Framework Class Library, CheckBox.AutoCheck Property [Visual Basic]

Incorrect Answers

B: If AutoCheck is set to false, you will need to add code to update the Checked or CheckState values in the Click event handler.

D: The Tag property only contains data about the control.

E, F: The CheckState property only contains the state of the check box.

G, H: The appearance property only determines the appearance of a check box control.

QUESTION 3:

You are preparing a localized version of a Windows Form named Certkiller Local.

Users of Certkiller Local speak a language that prints text from right to left. User interface elements on the form need to conform to this alignment.

You must ensure that all user interface elements are properly formatted when the localized Windows Form runs. You must also ensure that Certkiller Local is easy to update and maintain.

What should you do?

A. Set the RightToLeft property of each control on the form to Yes.

B. Set the RightToLeft property of the form to Yes.

C. Set the Language property of the form to the appropriate language.

D. Set the Localizable property of the form to True.

Answer: B

Explanation: The RightToLeft property is used for international applications where the language is written from right to left

Reference:

Visual Basic and Visual C# Concepts, Displaying Right-to-Left Text in Windows Forms for Globalization

Incorrect Answers

A: The RightToLeft property can be set either to controls or to the form. The best solution is to set the property only for the form.

C: The Language property is not used to format text.

D: The Localizable property is not used to format text.

QUESTION 4:

You use Visual Studio .NET to create a Windows-based application. The application includes a form named ConfigurationForm.

ConfigurationForm contains 15 controls that enable users to set basic configuration options for the application. You design these controls to dynamically adjust when users resize ConfigurationForm. The controls automatically update their size and position on the form as the form is resized. The initial size of the form should be 650 x 700 pixels.

If ConfigurationForm is resized to be smaller than 500 x 600 pixels, the controls will not be displayed correctly. You must ensure that users cannot resize ConfigurationForm to be smaller than 500 x 600 pixels.

Which two actions should you take to configure ConfigurationForm? (Each correct answer presents part of the solution. Choose two.)

- A. Set the MinimumSize property to "500,600".
- B. Set the MinimumSize property to "650,700".
- C. Set the MinimizeBox property to True.
- D. Set the MaximumSize property to "500,600".
- E. Set the MaximumSize property to "650,700".
- F. Set the MaximizeBox property to True.
- G. Set the Size property to "500,600".
- H. Set the Size property to "650,700".

Answer: A, H

Explanation:

A: The Form.MinimumSize Property gets or sets the minimum size the form can be resized to. It should be set to "500, 600".

H: We use the size property to set the initial size of the form. The initial size should be set to "650, 700".

Reference:

.NET Framework Class Library, Form.MinimumSize Property [Visual Basic]

.NET Framework Class Library, Form.Size Property [Visual Basic]

Incorrect Answers

B: The initial size is 650 x 750. The minimal size should be set to "500,600".

C: The minimize button will be displayed, but it will not affect the size of the form.

D, E: There is no requirement to define a maximum size of the form.

F: The maximize button will be displayed, but it will not affect the size of the form.

G: The initial size should be 650 x 700, not 500 x 600.

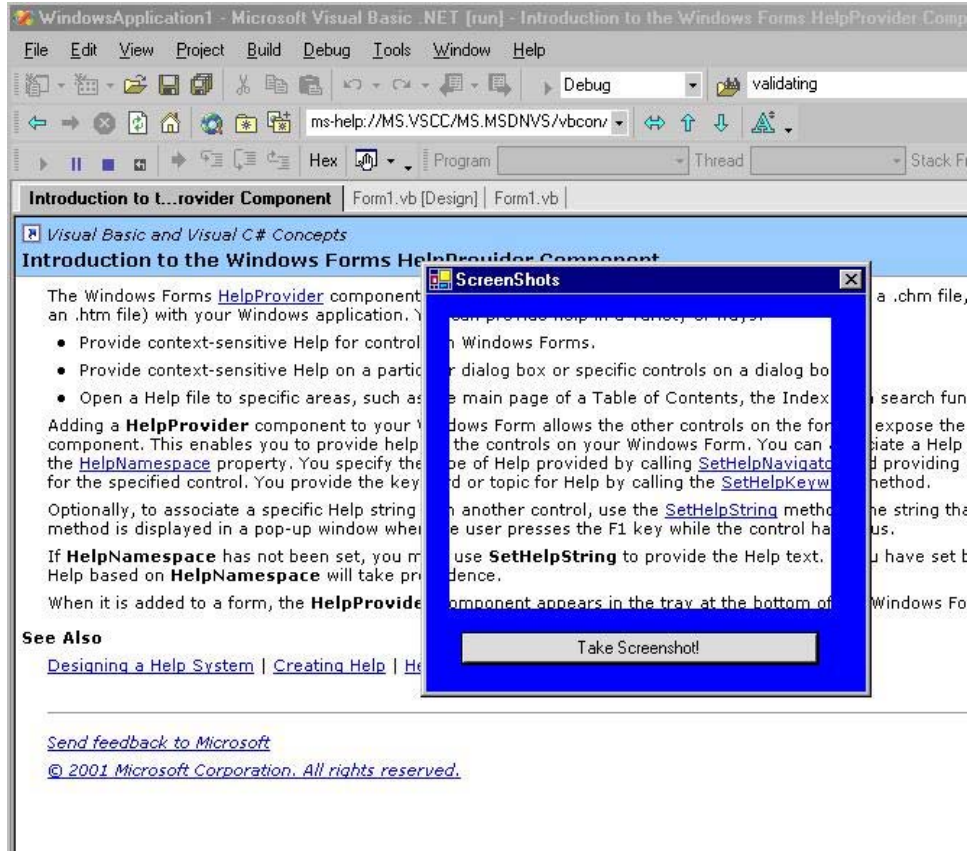
QUESTION 5:

You use Visual Studio .NET to create a Windows-based application. The application captures screen shots of a small portion of the visible screen.

You create a form named Certkiller CameraForm. You set the Certkiller CameraForm.BackColor property to Blue. You create a button on the form to enable users to take a screen shot.

Now, you need to create a transparent portion of Certkiller CameraForm to frame a small portion of the screen. Your application will capture an image of the screen

inside the transparent area. The resulting appearance of Certkiller CameraForm is shown in the exhibit:



You add a Panel control to Certkiller CameraForm and name it transparentPanel. You must ensure that any underlying applications will be visible within the panel. Which two actions should you take? (Each correct answer presents part of the solution. Choose two.)

- A. Set transparentPanel.BackColor to Red.
- B. Set transparentPanel.BackColor to Blue.
- C. Set transparentPanel.BackgroundImage to None.
- D. Set transparentPanel.Visible to False.
- E. Set CameraForm.Opacity to 0%.
- F. Set CameraForm.TransparencyKey to Red.
- G. Set CameraForm.TransparencyKey to Blue.

Answer: A, F

Explanation:

A: We set the Background color of the Panel to Red.

F: We then the transparency color of the Form to Red as well.

This will make only the Panel transparent, since the background color of the form is Blue.

QUESTION 6:

You use Visual Studio .NET to develop a Windows-based application for your human resources (HR) department. The HR department has two subdivisions named Benefits and Employee Information. The Benefits subdivision includes the Vacation group. Both subdivisions will use your application.

You plan to create four forms modeled after the organizational structure of the HR department. The forms will be named HR, EmployeeInformation, Benefits, and Vacation.

The forms must be arranged in a hierarchy so that each form includes all code and controls found on the forms above it in the hierarchy. The form at the top of the hierarchy will be a standard Windows Form. The form must also adhere to the following rules:

1. All forms should include code to access the general HR database.
2. Only forms used by the Benefits subdivision should have access to the Benefits database table.
3. The forms used by the Employee Information subdivision should have access to the EmployeeInformation database table.
4. The forms used by the Vacation group should include custom code to calculate vacation time.

Now you must create the form hierarchy.

Which code segment should you use?

A. Public Class HR

Inherits System.Windows.Forms.Form

End Class

Public Class Benefits

Inherits System.Windows.Forms.Form

Implements HR

End Class

Public Class Vacation

Inherits System.Windows.Forms.Form

Implements Benefits

End Class

Public Class EmployeeInformation

Inherits System.Windows.Forms.Form

Implements HR

End Class

B. Public Class HR

Inherits System.Windows.Forms.Form

End Class

Public Class Benefits

Inherits System.Windows.Forms.Form

Implements HR

End Class

Public Class Vacation

SAMPLE EXAM



Pass4sure \$89 Lifetime Membership Features;

- Pass4sure \$89 Lifetime Membership includes Over **2500** Exams in One Price.
- **All** Pass4sure **Questions and Answers** are included in \$89 package.
- **All** Pass4sure audio exams are included **free** in package (See List).
- **All** Pass4sure study guides are included **free** in package (See List).
- **Lifetime** login access, no hidden fee, no login expiry.
- **Free updates** for Lifetime.
- **Free Download Access** to All new exams added in future.
- Accurate answers with **explanations** (If applicable).
- **Verified answers** researched by industry experts.
- Study Material **updated** on regular basis.
- Questions, Answers and Study Guides are downloadable in **PDF** format.
- Audio Exams are downloadable in **MP3** format.
- **No authorization** code required to open exam.
- **Portable** anywhere.
- 100% success **Guarantee**.
- **Fast**, helpful support **24x7**.



View list of All exams (Q&A) provided in \$89 membership;

<http://www.ipass4sure.com/allexams.asp>

View list of All Study Guides (SG) provided FREE for members;

<http://www.ipass4sure.com/study-guides.asp>

View list of All Audio Exams (AE) provided FREE for members;

<http://www.ipass4sure.com/audio-exams.asp>

Download All Exams Sample QAs.

<http://www.ipass4sure.com/samples.asp>

To purchase \$89 Lifetime Full Access Membership click here (One time fee)

<https://www.regnow.com/softsell/nph-softsell.cgi?item=30820-3>

3COM	CompTIA	Filemaker	IBM	LPI	OMG	Sun
ADOBE	ComputerAssociates	Fortinet	IISFA	McAfee	Oracle	Sybase
APC	CWNP	Foundry	Intel	McData	PMI	Symantec
Apple	DELL	Fujitsu	ISACA	Microsoft	Polycom	TeraData
BEA	ECCouncil	GuidanceSoftware	ISC2	Mile2	RedHat	TIA
BICSI	EMC	HDI	ISEB	NetworkAppliance	Sair	Tibco
CheckPoint	Enterasys	Hitachi	ISM	Network-General	SASInstitute	TruSecure
Cisco	ExamExpress	HP	Juniper	Nokia	SCP	Veritas
Citrix	Exin	Huawei	Legato	Nortel	See-Beyond	Vmware
CIW	ExtremeNetworks	Hyperion	Lotus	Novell	SNIA	

and many others.. See complete list [Here](#)

