

Examcollection

<http://www.ipass4sure.com/examcollection.htm>



<http://www.ipass4sure.com>

70-230

Microsoft

*Designing and Implementing Solutions with Microsoft
BizTalk Server 2000, Enterprise Edition*

<http://www.ipass4sure.com/exams.asp?examcode=70-230>

Thousands of IT Professionals before you have already passed their 70-230 certification exams using the Microsoft 70-230 Practice Exam from [ipass4sure.com](http://www.ipass4sure.com). Once you start using our 70-230 exam questions you simply can't stop! You are guaranteed to pass your Microsoft 70-230 test with ease and in your first attempt.

Here's what you can expect from the [ipass4sure](http://www.ipass4sure.com) Microsoft 70-230 course:

- * Up-to-Date Microsoft 70-230 questions designed to familiarize you with the real exam.
- * 100% correct Microsoft 70-230 answers you simply can't find in other 70-230 courses.
- * All of our tests are easy to download. Your file will be saved as a 70-230 PDF.
- * Microsoft 70-230 brain dump free content featuring the real 70-230 test questions.

Microsoft 70-230 Certification Exam is of core importance both in your Professional life and Microsoft Certification Path. With Microsoft Certification you can get a good job easily in the market and get on your path for success. Professionals who passed Microsoft 70-230 Certification Exam are an absolute favorite in the industry. If you pass Microsoft 70-230 Certification Exam then career opportunities are open for you.

Our 70-230 Questions & Answers provide you an easy solution to your Microsoft 70-230 Exam Preparation. Our 70-230 Q&As contains the most updated Microsoft 70-230 real tests. You can use our 70-230 Q&As on any PC with most versions of Acrobat Reader and prepare the exam easily.

DEMO EXAM

For Full Version visit

<http://www.ipass4sure.com/allexams.asp>

QUESTION 1:

You are a BizTalk Server administrator for Certkiller . BizTalk Server 2000 is installed on one computer that is responsible for document receive, messaging, and orchestration processes.

Your BizTalk Server system receives invoices from suppliers as inbound documents, maps each invoice to an outbound document, and posts each invoice to an accounting system for payment processing. The BizTalk Server system uses a complex map to convert inbound documents to outbound documents, and this process causes a significant slowdown in the performance of the BizTalk Server computer. During this process, CPU usage is 55 percent.

You need to improve the speed of the document process without adding any additional servers to your network. You need to change the BizTalk Server configuration to accomplish this task.

What should you do?

- A. Increase the maximum number of receives function threads.
- B. Increase the maximum number of worker threads.
- C. Decrease the maximum number of receives function threads.
- D. Decrease the maximum number of worker threads.

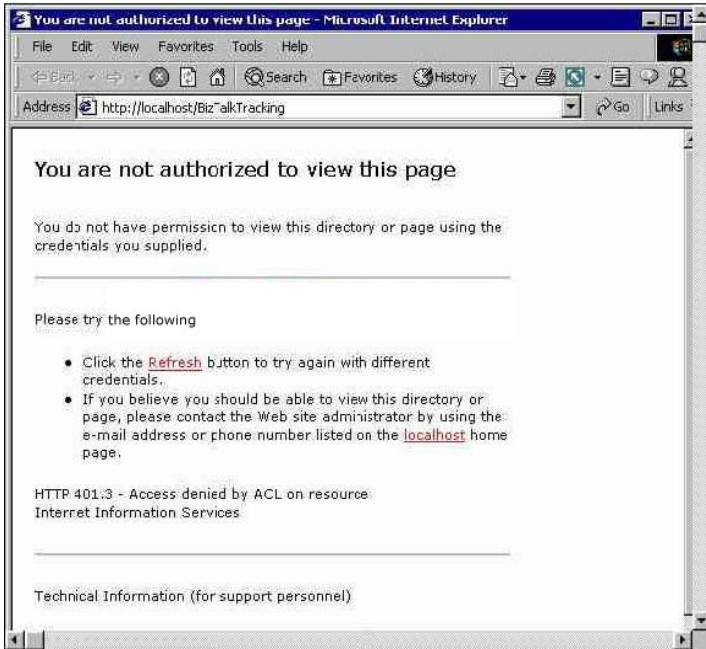
Answer:

QUESTION 2:

You are the BizTalk Server administrator for Certkiller . Certkiller recently implemented a large integration system with its trading partners.

You are working on business-to-business (B2B) integration with a new trading partner.

You need to confirm the arrival of the test business document from the trading partner's system. You delegate this responsibility to a newly hired BizTalk Server administrator. The new administrator receives the message shown in the exhibit when attempting to log on to BizTalk Document Tracking.



You are able to log on successfully. You need to ensure that the new administrator can use BizTalk Document Tracking to confirm the arrival of the document to Certkiller's network. What should you do?

- A. Set up a Microsoft SQL Server login account for the new administrator, select Windows Authentication in the SQL Server Login Properties dialog box, and grant access privileges in the Tracking database.
- B. Add the new administrator's user account to the BizTalk Server Administrators group.
- C. Add the new administrator's user account to the BizTalk Server Report Users group.
- D. Add the new administrator's user account to the Power Users group.

Answer:

QUESTION 3:

You are the BizTalk Server administrator for Northwind Traders. Northwind Traders has established business-to-business (B2B) integration with its trading partners. BizTalk Server 2000 is operating on one computer, and Microsoft SQL Server is operating on a separate computer. Northwind Traders receives a large number of customer purchases operating on a separate computer. Northwind Traders receives a large number of customer purchase order documents. These documents are in XML format.

Your trading partners want to confirm the receipt of important purchase order documents.

The trading partners provide you with purchase order numbers, part number, and quantity of items in the order. You enable tracking at the document level and field level.

After enabling this tracking, you discover that a large amount of data is being written to the hard disk on the SQL Server computer, and the size of the Tracking database increases by 40 MB per day.

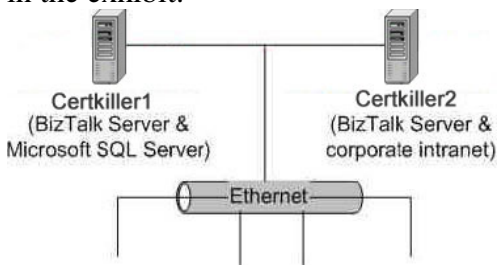
You need to manage your hard disk resources while maintaining document and field tracking functionality and optimizing system performance. What should you do?

- A. Set up replication and SQL Server Agent jobs to selectively remove transactions from the Tracking database periodically.
- B. Enable the Truncate log on checkpoint feature for the Tracking database.
- C. Increase the cache refresh interval for the Messaging Management object.
- D. In the BizTalk Server group properties, enable logging for MIME-encoded messages.

Answer:

QUESTION 4:

You are a BizTalk Server administrator for Certkiller . The company uses BizTalk Server 2000 for enterprise application integration (EAI). The architecture is configured as shown in the exhibit.



The WebDAV repository on Certkiller 2 is used as central repository of all specification and map files. During non-business hours, you need to make modifications to a specification. You use Certkiller 1 to perform the modification.

When you attempt to open the specification in BizTalk Editor by selecting Retrieve from WebDAV from the File menu. You receive the following error message.

"No BizTalk Server repository was found on
[http:// Certkiller 2/BizTalkServerRepository/DocSpecs](http://Certkiller2/BizTalkServerRepository/DocSpecs). Enter another server name to retry the WebDAV connection."

You verify that both servers are properly connected to the network and that the BizTalk Services and Microsoft SQL Server are functioning normally.

You need to be able retrieve and modify specifications from WebDAV. What should you do?

- A. Retrieve the specification from WebDAV by using BizTalk Editor on Certkiller 2.
- B. Stop and restart SQL Server on Certkiller 1.
- C. Start the Default Web Site in Internet Information Services (IIS) on Certkiller 2.
- D. Enter Certkiller 1 as the server name in the Retrieve from WebDAV dialog.

Answer:

QUESTION 5:

You verify that both servers are properly connected to the network and that the BizTalk Services and Microsoft SQL Server are functioning normally.

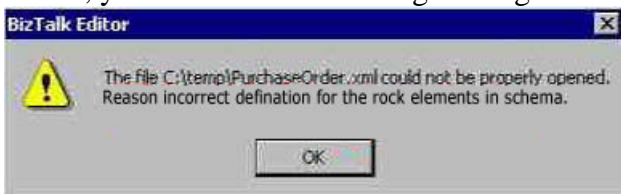
You need to be able retrieve and modify specifications from WebDAV. What should you do?

- A. Retrieve the specification from WebDAV by using BizTalk Editor on BTServer2.
- B. Stop and restart SQL Server on BTServer1.
- C. Start the Default WebSite in Internet Information Services (IIS) on BTServer2.
- D. Enter BTServer1 as the server name in the Retrieve from WebDav. Dialog box.

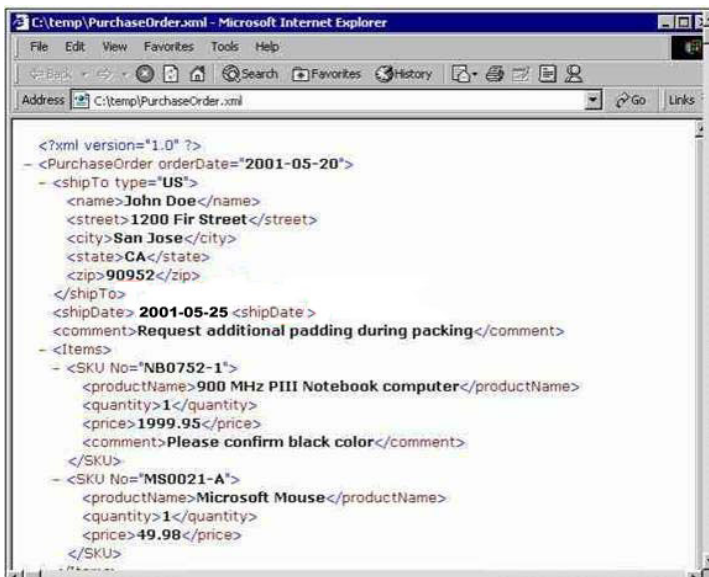
Answer:

QUESTION 6:

You are the BizTalk Server administrator for Wide World Importers. Ever administrator for Wide World Importers. Certkiller uses BizTalk Server 2000 for business process integration. BizTalk Server 2000 runs on a single dedicated computer. Wide World Importers and a trading partner recently initiated business-to-business (B2B) integration. The trading partner provided a sample XML document instance containing sample data. You need to create specification and document definitions on your BizTalk Server computer. When you attempt to open the XML document instance by using BizTalk Editor, you receive the following message.



When you open the same document by using Internet Explorer, you receive the results shown in the exhibit.



You need to complete setting up this specification so that you can configure the BizTalk Messaging Service. What should you do?

- A. Select the Create a new field as an element check box in the BizTalk Editor Options dialog box and reopen the XML document instance file.
- B. Import the XML document instance by using the Import option on the Tools menu in BizTalk

SAMPLE EXAM



Pass4sure \$89 Lifetime Membership Features;

- Pass4sure \$89 Lifetime Membership includes Over **2500** Exams in One Price.
- **All** Pass4sure **Questions and Answers** are included in \$89 package.
- **All** Pass4sure audio exams are included **free** in package (See List).
- **All** Pass4sure study guides are included **free** in package (See List).
- **Lifetime** login access, no hidden fee, no login expiry.
- **Free updates** for Lifetime.
- **Free Download Access** to All new exams added in future.
- Accurate answers with **explanations** (If applicable).
- **Verified answers** researched by industry experts.
- Study Material **updated** on regular basis.
- Questions, Answers and Study Guides are downloadable in **PDF** format.
- Audio Exams are downloadable in **MP3** format.
- **No authorization** code required to open exam.
- **Portable** anywhere.
- 100% success **Guarantee**.
- **Fast**, helpful support **24x7**.



View list of All exams (Q&A) provided in \$89 membership;
<http://www.ipass4sure.com/allexams.asp>

View list of All Study Guides (SG) provided FREE for members;
<http://www.ipass4sure.com/study-guides.asp>

View list of All Audio Exams (AE) provided FREE for members;
<http://www.ipass4sure.com/audio-exams.asp>

Download All Exams Sample QAs.
<http://www.ipass4sure.com/samples.asp>

To purchase \$89 Lifetime Full Access Membership click here (One time fee)
<https://www.regnow.com/softsell/nph-softsell.cgi?item=30820-3>

3COM	CompTIA	Filemaker	IBM	LPI	OMG	Sun
ADOBE	ComputerAssociates	Fortinet	IISFA	McAfee	Oracle	Sybase
APC	CWNP	Foundry	Intel	McData	PMI	Symantec
Apple	DELL	Fujitsu	ISACA	Microsoft	Polycom	TeraData
BEA	ECCouncil	GuidanceSoftware	ISC2	Mile2	RedHat	TIA
BICSI	EMC	HDI	ISEB	NetworkAppliance	Sair	Tibco
CheckPoint	Enterasys	Hitachi	ISM	Network-General	SASInstitute	TruSecure
Cisco	ExamExpress	HP	Juniper	Nokia	SCP	Veritas
Citrix	Exin	Huawei	Legato	Nortel	See-Beyond	Vmware
CIW	ExtremeNetworks	Hyperion	Lotus	Novell	SNIA	

and many others.. See complete list Here

