

# **Examcollection**

<http://www.ipass4sure.com/examcollection.htm>



<http://www.ipass4sure.com>

# 70-217

## Microsoft

*Implementing and Administering a Microsoft Windows  
2000 Directory*

<http://www.ipass4sure.com/exams.asp?examcode=70-217>

Thousands of IT Professionals before you have already passed their 70-217 certification exams using the Microsoft 70-217 Practice Exam from ipass4sure.com. Once you start using our 70-217 exam questions you simply can't stop! You are guaranteed to pass your Microsoft 70-217 test with ease and in your first attempt.

Here's what you can expect from the ipass4sure Microsoft 70-217 course:

- \* Up-to-Date Microsoft 70-217 questions designed to familiarize you with the real exam.
- \* 100% correct Microsoft 70-217 answers you simply can't find in other 70-217 courses.
- \* All of our tests are easy to download. Your file will be saved as a 70-217 PDF.
- \* Microsoft 70-217 brain dump free content featuring the real 70-217 test questions.

Microsoft 70-217 Certification Exam is of core importance both in your Professional life and Microsoft Certification Path. With Microsoft Certification you can get a good job easily in the market and get on your path for success. Professionals who passed Microsoft 70-217 Certification Exam are an absolute favorite in the industry. If you pass Microsoft 70-217 Certification Exam then career opportunities are open for you.

Our 70-217 Questions & Answers provide you an easy solution to your Microsoft 70-217 Exam Preparation. Our 70-217 Q&As contains the most updated Microsoft 70-217 real tests. You can use our 70-217 Q&As on any PC with most versions of Acrobat Reader and prepare the exam easily.

# **DEMO EXAM**

For Full Version visit

<http://www.ipass4sure.com/allexams.asp>

## Objectives

A	Installing, Configuring, and Troubleshooting Active Directory
B	Installing, Configuring, Managing, Monitoring, and Troubleshooting DNS for Active Directory
C	Installing, Configuring, Managing, Monitoring, Optimizing and Troubleshooting Change and Configuration Management
D	Managing, Monitoring and Optimizing the Components of Active Directory
E	Monitoring, Maintaining and Troubleshooting Active Directory Components

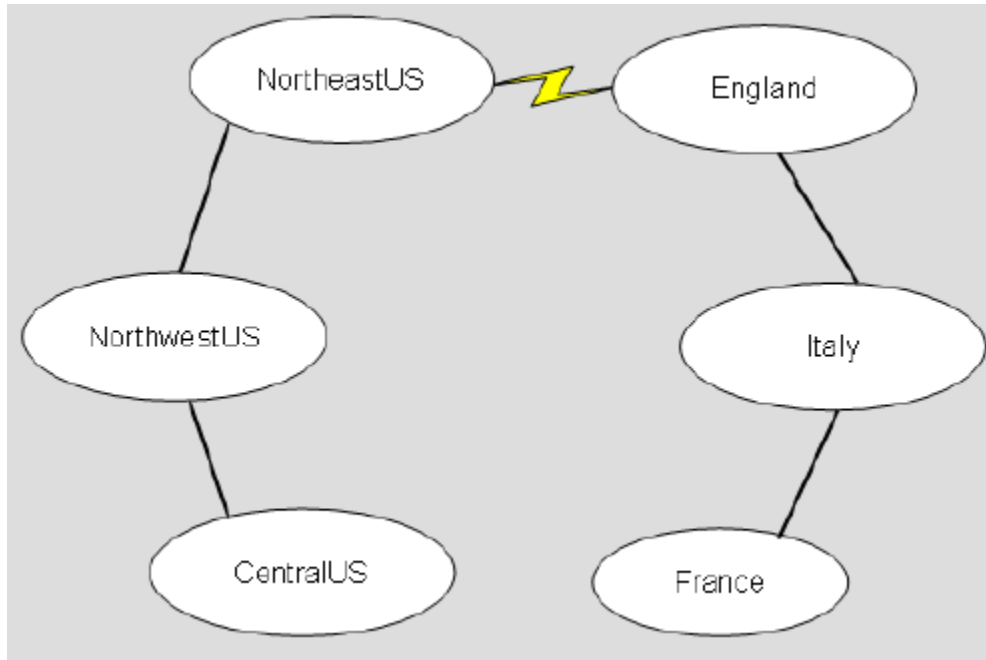
⇒ **Relevant objective of each question is mentioned with question number.**

**A**

**Question 1.(A)**

You are the administrator of a Windows 2000 network. Your company has three locations in North America and three locations in Europe.

Your network includes six sites as shown in the exhibit (Click the Exhibit button).



The England, France, and Italy sites are in the eur.blueskyairlines.com domain. The NorthWestUS, CentralUS, and NorthEastUS sites are in the na.blueskyairlines.com domain. The root of the forest is blueskyairlines.com.

The connection between the NorthEastUS site and the England site is unreliable. You want to configure replication between the NorthEastUS site and the England site.

What should you do?

- A. Create an SMTP site link between the NorthEastUS site and the England site.
- B. Create an IP site link between the NorthEastUS site and the England site.
- C. Create an SMTP site link bridge between the NorthEastUS site and the England site.
- D. Create an IP site like bridge between the NorthEastUS site and the England site.

**Answer: A**

**Explanation:**

Simple Mail TrAnswerfer Protocol (SMTP) is an Internet standard host-to-host mail trAnswerport protocol that and operates over TCP port 25. When the network connection is interrupted, SMTP queues network packets and attempts to send the packets later. SMTP is the best protocol to use across unreliable network links.

**Incorrect Answers:**

**B:** IP site links should only be used on reliable connections, as it does not queue up network packets that were not deliverable. Instead these packets are lost and thus replication will not

be successful.

**C:** By default, when more than two sites are linked for replication and use the same trAnswerport protocol; the site links are "bridged". This meAnswer that all site links within the bridge can route

replication traffic only within the bridge. We thus do not require a site link bridge.

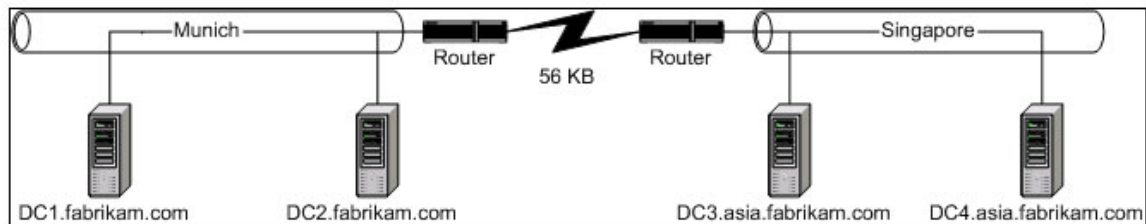
**D:** By default, when more than two sites are linked for replication and use the same trAnswerport protocol; the site links are "bridged". This meAnswer that all site links within the bridge can route

replication traffic only within the bridge. We thus do not require a site link bridge.

### Question 2. (A)

You are the administrator of your company's Windows 2000 network. The network contains two Active Directory sites:

Munich and Singapore. The network also consists of two domains: fabrikam.com and asia.fabrikam.com. The network is configured as shown in the exhibit. (Click the **Exhibit** button.)



Users from the Singapore office often travel to the Munich office with their portable computers. When these users log on to the network from Munich, their computers display the text "Applying your personal settings" for a long time.

You want to ensure that users from Singapore do not experience these delays when they log on to the network from Munich.

What should you do?

- A. Associate the Munich subnet with the Singapore site.
- B. Create a trust relationship so that fabrikam.com trusts asia.fabrikam.com.
- C. Install a domain controller for asia.fabrikam.com in the Munich subnet.
- D. Use the Active Directory Sites and Services snap-in to move DC3 to the Munich site.

**Answer: C**

### Explanation:

When the users from Singapore log on at Munich their personal settings are downloaded from Singapore. Due to the slow WAN link, this procedure causes long delays. By adding a domain controller for asia.fabrikam.com in the Munich subnet, these logins could be processed locally at Munich and the logon delays would disappear.

### Incorrect Answers:

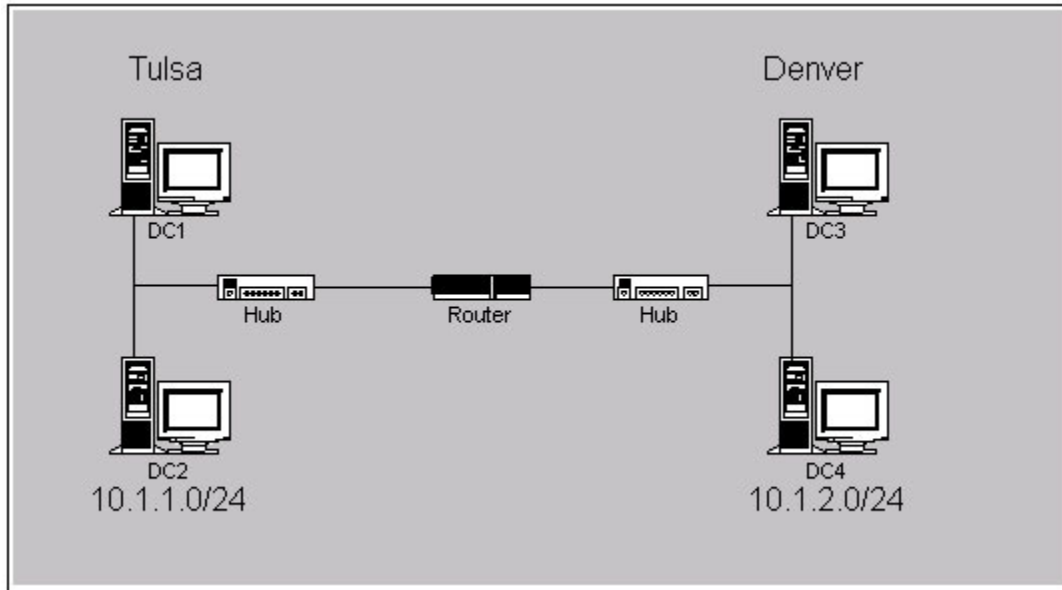
**A:** A site should be a well-connected TCP/IP network. Munich is only connected to Singapore with a slow WAN link and should therefore not be included in the Singapore site.

**B:** Fabrikam.com and asia.fabrikam.com are in the same domain tree and there already exists a two-way implicit trust between the domains by default since this is a Windows 2000 network. There would be no need to create any explicit trusts between the domains.

**D:** DC3 is physically placed in the Singapore subnet. To logically move it to Munich site would not increase performance, on the contrary it would most likely increase traffic on the WAN link and performance would decrease. Computers should only be added to the site to which their subnet belongs.

**Question 3. .(A)**

You are the administrator of a Windows 2000 network named contoso.com. Your network is configured as shown in the exhibit. (Click the **Exhibit** button.)



You company plAnswer to open a new office in Dallas. Members of your IT staff will be on –site in Dallas next week to install the new 10.1.3.0/24 network. You want to prepare the network in advance so that when the IT staff installs a new domain controller, it will automatically join the appropriate site.

What should you do?

- A. Delete the Default-First-Site-Name object in Active Directory Sites and Services.
- B. Create a new subnet for the Dallas network. Create a new site and associate the new subnet with the new site.
- C. In the new Domain Controller OU, create a computer account that has the name of the new domain controller.
- D. Use RIS to prestage the new domain controller.
- E. Copy the installation source files to the new domain controller. Create an unattended install file with an automated DCPromo.bat file.

**Answer: B**

**Explanation:**

By associating a subnet with a new site, any computer configured with an IP address in that subnet will be associated with that site.

**Incorrect Answers:**

- A:** Deleting the Default-First-Site-Name object in Active Directory Sites and Services would not automatically result in the computers being associated with a site. We would need to add the subnet to a new site.
- C:** This will not associate the Domain Controller with a site. We should instead add the subnet that the Domain Controller is installed on to a new site.
- D:** RIS cannot be used to install a Domain Controller. Furthermore, installing a Domain Controller will not result in the association of the computer with a site. We should instead add the subnet that the Domain Controller is installed on to a new site.
- E:** DCPromo is a command-line utility that can be used to install Active Directory. There is however, no PCPromo.bat file in Windows 2000.

**Question 4. (A)**

You are the administrator of the Arbor Shoes company network. There is one domain arborshoes.com. The domain contains three sites named Geneva, Milwaukee, and Portland.

Each site has two domain controllers from the arborshoes.com domain. Geneva and Portland each have 1,000 users. Milwaukee has 500 users. There are two IP site links: Geneva\_Portland and Milwaukee\_Portland. You want to add another domain controller in each site to handle all replication from each site.

What should you do?

- A. Configure each new domain controller to the IP preferred bridgehead server for its site.
- B. Create a connection object from each domain controller in each site to the new domain controller in each site.
- C. Create a new site link that has a lower cost than the existing site links.
- D. Delete the existing connection objects in each site and manually start the Knowledge Consistency Checker (KCC).

**Answer: A**

**Explanation:**

Site links direct information arbitrarily to any Domain Controller in a site. Establishing a bridgehead server provides some ranking or criteria for choosing which Domain Controller should be preferred as the recipient for inter-site replication. This bridgehead server then subsequently distributes the directory information via intra-site replication. Therefore, when a preferred bridgehead server has been defined at a site, all site replication from and to this site will pass through the preferred bridgehead server.

**Question 5. (A)**

You are the administrator of a Windows 2000 network. Your Windows 2000 Domain Controller has been in operation for one year. During that year, you have deleted numerous objects. However, the Ntds.dit file is the same size it was before you deleted any objects.

You want to reduce the size of the Ntds.dit file. What should you do? (Choose two)

- A. Delete all the log files from the NTDS folder and restart the server.
- B. Use the Ntdsutl utility to perform an authoritative restore.
- C. Run the Esentutl utility by using the /d switch.
- D. Restart the server in directory services restore mode.
- E. Use the Ntdsutl utility to compress the database to another drive.

**Answer: D, E**



SAMPLE EXAM



### Pass4sure \$89 Lifetime Membership Features;

- Pass4sure \$89 Lifetime Membership includes Over **2500** Exams in One Price.
- **All** Pass4sure **Questions and Answers** are included in \$89 package.
- **All** Pass4sure audio exams are included **free** in package (See List).
- **All** Pass4sure study guides are included **free** in package (See List).
- **Lifetime** login access, no hidden fee, no login expiry.
- **Free updates** for Lifetime.
- **Free Download Access** to All new exams added in future.
- Accurate answers with **explanations** (If applicable).
- **Verified answers** researched by industry experts.
- Study Material **updated** on regular basis.
- Questions, Answers and Study Guides are downloadable in **PDF** format.
- Audio Exams are downloadable in **MP3** format.
- **No authorization** code required to open exam.
- **Portable** anywhere.
- 100% success **Guarantee**.
- **Fast**, helpful support **24x7**.



View list of All exams (Q&A) provided in \$89 membership;  
<http://www.ipass4sure.com/allexams.asp>

View list of All Study Guides (SG) provided FREE for members;  
<http://www.ipass4sure.com/study-guides.asp>

View list of All Audio Exams (AE) provided FREE for members;  
<http://www.ipass4sure.com/audio-exams.asp>

Download All Exams Sample QAs.  
<http://www.ipass4sure.com/samples.asp>

To purchase \$89 Lifetime Full Access Membership click here (One time fee)  
<https://www.regnow.com/softsell/nph-softsell.cgi?item=30820-3>

3COM	CompTIA	Filemaker	IBM	LPI	OMG	Sun
ADOBE	ComputerAssociates	Fortinet	IISFA	McAfee	Oracle	Sybase
APC	CWNP	Foundry	Intel	McData	PMI	Symantec
Apple	DELL	Fujitsu	ISACA	Microsoft	Polycom	TeraData
BEA	ECCouncil	GuidanceSoftware	ISC2	Mile2	RedHat	TIA
BICSI	EMC	HDI	ISEB	NetworkAppliance	Sair	Tibco
CheckPoint	Enterasys	Hitachi	ISM	Network-General	SASInstitute	TruSecure
Cisco	ExamExpress	HP	Juniper	Nokia	SCP	Veritas
Citrix	Exin	Huawei	Legato	Nortel	See-Beyond	Vmware
CIW	ExtremeNetworks	Hyperion	Lotus	Novell	SNIA	

and many others.. See complete list [Here](#)

