

Examcollection

<http://www.ipass4sure.com/examcollection.htm>



<http://www.ipass4sure.com>

642-971

Cisco

Cisco Data Center Networking Infrastructure Design

<http://www.ipass4sure.com/exams.asp?examcode=642-971>

The 642-971 practice exam is written and formatted by Certified Senior IT Professionals working in today's prospering companies and data centers all over the world! The 642-971 Practice Test covers all the exam topics and objectives and will prepare you for success quickly and efficiently. The 642-971 exam is very challenging, but with our 642-971 questions and answers practice exam, you can feel confident in obtaining your success on the 642-971 exam on your FIRST TRY!

Cisco 642-971 Exam Features

- Detailed questions and answers for 642-971 exam
- Try a demo before buying any Cisco exam
- 642-971 questions and answers, updated regularly
- Verified 642-971 answers by Experts and bear almost 100% accuracy
- 642-971 tested and verified before publishing
- 642-971 examcollection vce questions with exhibits
- 642-971 same questions as real exam with multiple choice options

Acquiring Cisco certifications are becoming a huge task in the field of I.T. More over these exams like 642-971 exam are now continuously updating and accepting this challenge is itself a task. This 642-971 test is an important part of Cisco certifications. We have the resources to prepare you for this. The 642-971 exam is essential and core part of Cisco certifications and once you clear the exam you will be able to solve the real life problems yourself. Want to take advantage of the Real 642-971 Test and save time and money while developing your skills to pass your Cisco 642-971 Exam? Let us help you climb that ladder of success and pass your 642-971 now!

DEMO EXAM

For Full Version visit

<http://www.ipass4sure.com/allexams.asp>

QUESTION: 1

What advantage does InfiniBand have over Gigabit Ethernet in HPC environments?

- A. Lower latency
- B. Simpler cabling
- C. Longer distance support
- D. More sophisticated traffic management

Answer: A

QUESTION: 2

Which data center network-architecture change is a result of the adoption of blade and 1-RUserver technologies?

- A. Layer 3 fault domains growing larger
- B. Layer 2 fault domains growing larger
- C. Layer 3 fault domains growing smaller
- D. Layer 2 fault domains growing smaller

Answer: B

QUESTION: 3

A very large blade-server deployment has high throughput requirements for both data and storage networks. Which access layer option would you recommend?

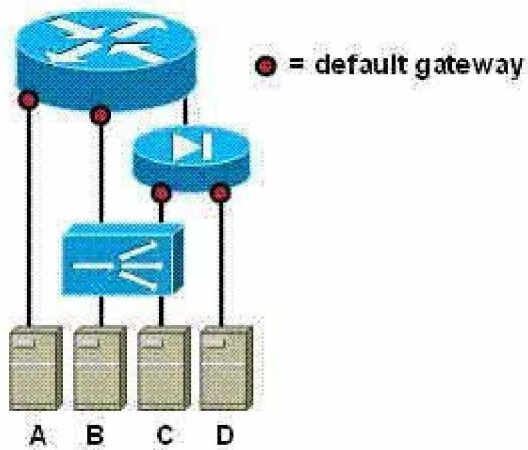
- A. Blade server Ethernet switch with Cisco SFS 3000 Series Multifabric Switch
- B. Blade server InfiniBand switch with Cisco SFS 3000 Series Multifabric Switch
- C. Blade server Ethernet switch that is connected to Cisco Catalyst 4948 top-of-rack switch
- D. Blade server Ethernet switch that is connected to Cisco Catalyst 6500 Series end-of-rack switch

Answer: B

QUESTION: 4

Refer to the exhibit.

Each letter (A-D) represents a model for placement of a default gateway. Which model allows the maximum number of application and security services?



- A. Model A
- B. Model B
- C. Model C
- D. Model D

Answer: C

QUESTION: 5

Which three of the following service modules can be deployed in redundant pairs with active/active failover? (Choose three.)

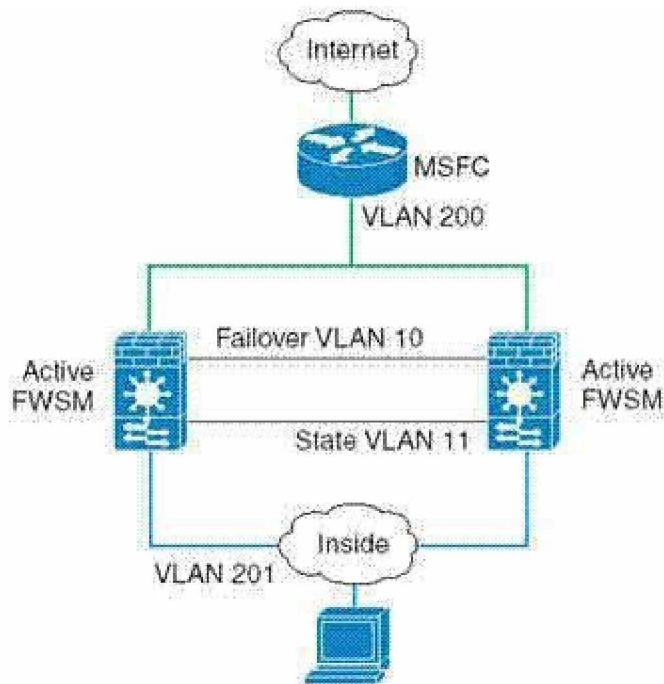
- A. ACE
- B. CSM
- C. NAM
- D. IDSM
- E. FWSM
- F. SSLSM

Answer: A, D, E

QUESTION: 6

Refer to the exhibit.

What do you need to configure to prevent spanning-tree loops from occurring between the two FWSMs?



- A. FWSMs in transparent mode
- B. ethertype ACLs to allow BPDUs
- C. FWSMs in multiple-context mode
- D. failover and state interfaces on the same VLAN

Answer: B

QUESTION: 7

How is FCIP traffic marked with DSCP values?

- A. The Cisco MDS 9000 Series Multilayer Switch marks one DSCP value per FCIP tunnel.
- B. The Cisco MDS 9000 Series Multilayer Switch marks two DSCP values per FCIP tunnel.
- C. The aggregation layer Ethernet switch marks one DSCP value per FCIP tunnel.
- D. The aggregation layer Ethernet switch marks two DSCP values per FCIP tunnel.

Answer: B

QUESTION: 8

Which two security vulnerabilities does the FWSM application inspection engine mitigate?
(Choose two.)

- A. DoS attacks



Pass4sure Certification Exam Features;

- Pass4sure offers over **2500** Certification exams for professionals.
- More than **98,800** Satisfied Customers Worldwide.
- Average **99.8%** Success Rate.
- Over **120** Global Certification Vendors Covered.
- Services of **Professional & Certified Experts** available via support.
- Free **90 days** updates to match real exam scenarios.
- **Instant Download Access!** No Setup required.
- Price as low as **\$19**, which is 80% more **cost effective** than others.
- **Verified answers** researched by industry experts.
- Study Material **updated** on regular basis.
- Questions / Answers are downloadable in **PDF** format.
- Mobile Device Supported (**Android, iPhone, iPod, iPad**)
- **No authorization** code required to open exam.
- **Portable** anywhere.
- **Guaranteed Success.**
- **Fast**, helpful support **24x7**.



View list of All certification exams offered;
<http://www.ipass4sure.com/all exams.asp>

View list of All Study Guides (SG);
<http://www.ipass4sure.com/study-guides.asp>

View list of All Audio Exams (AE);
<http://www.ipass4sure.com/audio-exams.asp>

Download Any Certification Exam DEMO.
<http://www.ipass4sure.com/samples.asp>

To purchase Full version of exam click below;
<http://www.ipass4sure.com/all exams.asp>

| | | | | | | |
|------------|--------------------|------------------|---------|------------------|--------------|-----------|
| 3COM | CompTIA | Filemaker | IBM | LPI | OMG | Sun |
| ADOBE | ComputerAssociates | Fortinet | IISFA | McAfee | Oracle | Sybase |
| APC | CWNP | Foundry | Intel | McData | PMI | Symantec |
| Apple | DELL | Fujitsu | ISACA | Microsoft | Polycom | TeraData |
| BEA | ECCouncil | GuidanceSoftware | ISC2 | Mile2 | RedHat | TIA |
| BICSI | EMC | HDI | ISEB | NetworkAppliance | Sair | Tibco |
| CheckPoint | Enterasys | Hitachi | ISM | Network-General | SASInstitute | TruSecure |
| Cisco | ExamExpress | HP | Juniper | Nokia | SCP | Veritas |
| Citrix | Exin | Huawei | Legato | Nortel | See-Beyond | Vmware |
| CIW | ExtremeNetworks | Hyperion | Lotus | Novell | Google | |

and many others.. See complete list [Here](#)

