

# **Examcollection**

<http://www.ipass4sure.com/examcollection.htm>



<http://www.ipass4sure.com>

# 642-436

**Cisco**

*Cisco Voice over IP (CVOICE)*

<http://www.ipass4sure.com/exams.asp?examcode=642-436>

Thousands of IT Professionals before you have already passed their 642-436 certification exams using the Cisco 642-436 Practice Exam from ipass4sure.com. Once you start using our 642-436 exam questions you simply can't stop! You are guaranteed to pass your Cisco 642-436 test with ease and in your first attempt.

Here's what you can expect from the ipass4sure Cisco 642-436 course:

- \* Up-to-Date Cisco 642-436 questions designed to familiarize you with the real exam.
- \* 100% correct Cisco 642-436 answers you simply can't find in other 642-436 courses.
- \* All of our tests are easy to download. Your file will be saved as a 642-436 PDF.
- \* Cisco 642-436 brain dump free content featuring the real 642-436 test questions.

Cisco 642-436 Certification Exam is of core importance both in your Professional life and Cisco Certification Path. With Cisco Certification you can get a good job easily in the market and get on your path for success. Professionals who passed Cisco 642-436 Certification Exam are an absolute favorite in the industry. If you pass Cisco 642-436 Certification Exam then career opportunities are open for you.

Our 642-436 Questions & Answers provide you an easy solution to your Cisco 642-436 Exam Preparation. Our 642-436 Q&As contains the most updated Cisco 642-436 real tests. You can use our 642-436 Q&As on any PC with most versions of Acrobat Reader and prepare the exam easily.

# **DEMO EXAM**

For Full Version visit

<http://www.ipass4sure.com/allexams.asp>

**Question: 1**

Which two statements describe the purpose of the technology prefix? (Choose two.)

- A. Technology prefixes are configured on gateways to indicate to the gatekeeper whether they support voice or video.
- B. Technology prefixes must always be configured on gateways.
- C. Technology prefixes are used to identify different types or classes of gateways.
- D. Technology prefixes are prepended to the destination address by the gateway.
- E. Technology prefixes have to be unique on each gateway.

**Answer: C, D**

**Question: 2**

Which statement is true about only out-of-band signaling?

- A. A signaling bit is robbed from each frame.
- B. Signaling bits are sent in a special order in a dedicated signaling frame.
- C. All signaling is directly associated with its corresponding voice frame.
- D. All voice packets carry their own signaling.

**Answer: B**

**Question: 3**

Examine the example output.

```
hostname GW1
!
interface Ethernet 0/0
ip address 172.16.2.1 255.255.255.0
h323-gateway voip interface
h323-gateway voip id GK1-zone1.abc.com abc.com ipaddr 172.16.2.2
h323-gateway voip h323-id GW1
h323-gateway voip bind srcaddr 172.16.2.1
!
dial-peer voice 1 voip
destination-pattern 1212.
session-target ras
!
dial-peer voice 2 pots
destination-pattern 2125551212
no register e164
!
end
```

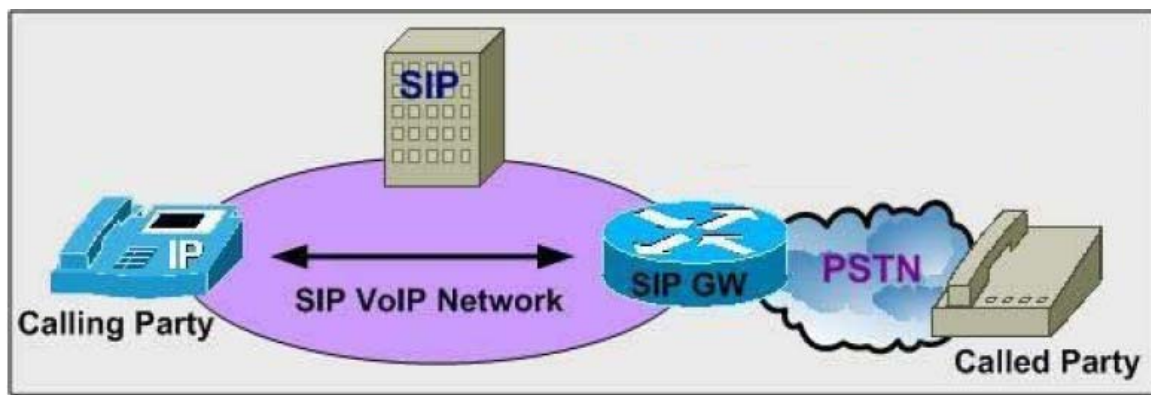
Choose the command that will restore communication with gatekeeper functionality to this device.

- A. h323-gateway voip h323-id GK1
- B. gateway
- C. h323-gateway voip bind srcaddr 172.16.2.2
- D. h323-gateway voip GW1-zone2.abc.com abc.com ipaddr 172.16.2.1

**Answer: B**

**Question: 4**

Refer to the exhibit. Which two actions would be initiated by a UAS? (Choose two.)



- A. Contacts the user when a SIP invitation is received
- B. Originates the REFER method to initiate call termination
- C. Returns a response on behalf of the user to the invitation originator
- D. Originates the INVITE method including a description of the session parameters
- E. Originates the ACK method to indicate that it has received a response to an invitation

**Answer: A, C**

**Question: 5**

Which option is true concerning the MGCP call agent?

- A. Acts only as a recorder of call details
- B. Provides only call signaling and call setup
- C. Manages all aspects of the call and voice stream
- D. Monitors the quality of each call after setup

**Answer: B**

**Question: 6**

Which statement best describes gatekeeper operation when the technology prefix is matched and the gatekeeper is using the technology prefix with hopoff?

- A. The gatekeeper always forwards the call to the zone specified in the hopoff command.
- B. The gatekeeper only forwards the call to the hopoff zone if the zone prefix does not match.
- C. The gatekeeper attempts to forward the call to the hopoff zone, but if this fails, it will forward the call to the zone specified in the zone prefix command.
- D. The gatekeeper attempts to forward the call to the zone specified in the zone prefix command first, but if this fails, it will forward the call to the zone specified in the hopoff command.

**Answer: A**

**Question: 7**

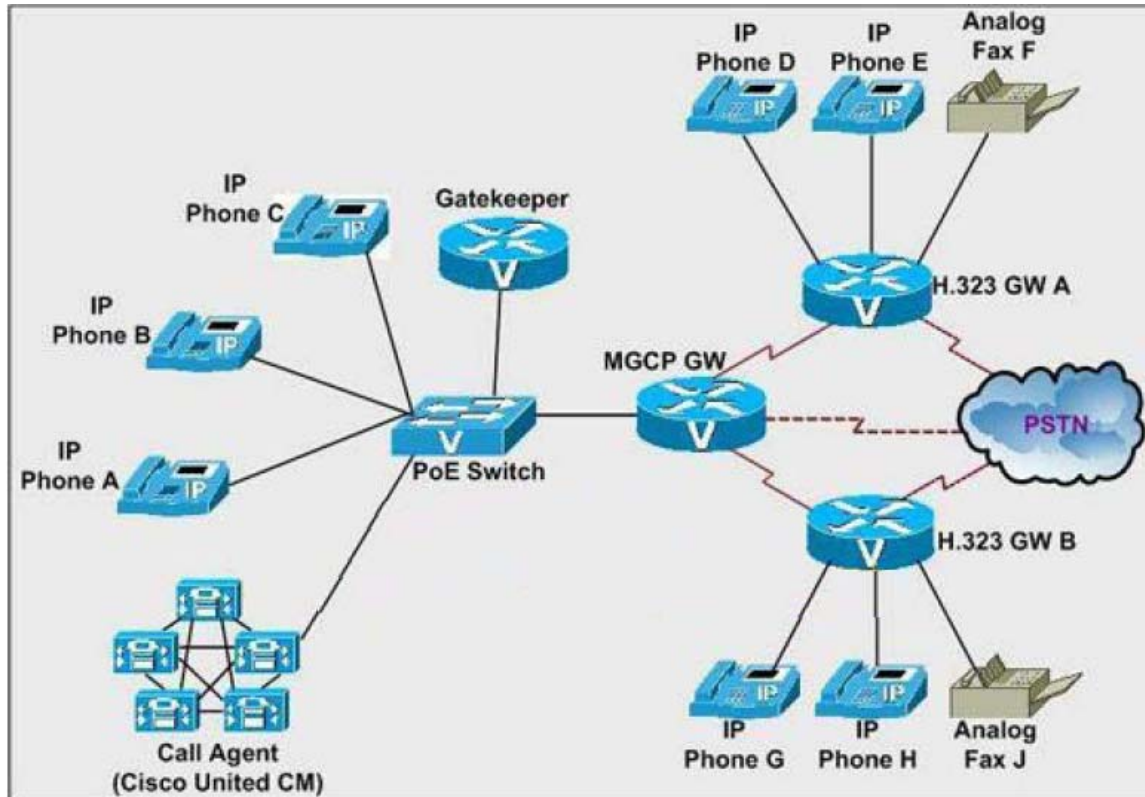
Refer to the exhibit. All IP phones are SCCP phones. Phone D makes an internal call to phone G. Which call setup signaling statement is true?

- A. Phone D signals phone G directly. Call setup is handled by the phones.
- B. Phone D signals gateway A, which processes the call and signals phone G.
- C. Phone D signals gateway B, which processes the call and signals phone G.
- D. Phone D signals gatekeeper. The gatekeeper processes the call and signals phone G.
- E. Phone D signals the call agent. The call agent processes the call and signals phone G.

**Answer: E**

**Question: 8**

Refer to the exhibit. All IP phones use SCCP. Fax machine F calls fax machine J. Which call setup signaling statement is correct?



- A. Fax F signals Fax J directly. Call setup is handled by the fax machines.
- B. Gateway A processes the call and signals gateway B. Gateway B processes the request.
- C. Gateway A signals the call agent. The call agent processes the call and signals gateway B.
- D. Gateway A signals the gatekeeper. The gatekeeper processes the call and signals gateway B.
- E. Gateway A processes the call and signals gateway B. Gateway B processes the call. During the setup, the gateways query the gatekeeper for address resolution and call setup permission.

**Answer: E**

**Question: 9**

Refer to the exhibit. Three department managers share the directory number 3000. The Marketing manager's phone is attached to port 1/1. The Engineering manager's phone is attached to port 1/2. The Shipping manager's phone is attached to port 1/3. In which situation would an incoming call ring on the Shipping manager's phone?

```

dial-peer voice 1 pots
  destination pattern 3000
  port 1/1
  preference 0
!
dial-peer voice 2 pots
  destination pattern 3000
  port 1/2
  preference 1
!
dial-peer voice 3 pots
  destination pattern 3000
  port 1/3
  preference 2

```

- A. The Marketing manager is on the phone.
- B. None of the managers are on the phone.
- C. The Engineering manager is on the phone.
- D. The Shipping manager and Marketing manager are on the phone.
- E. The Engineering manager and Marketing manager are on the phone.

**Answer: E**

**Question: 10**

Using Cisco Unified Communications Manager Express, what four steps are necessary to implement COR? (Choose four.)

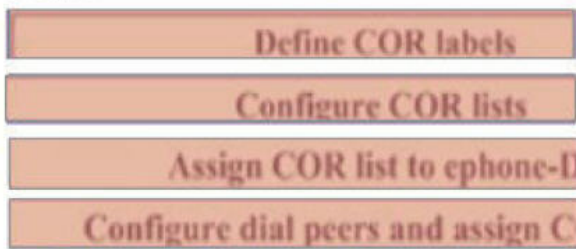
	<b>Steps</b>
Configure dial peers and assign COR lists	<input type="checkbox"/>
Configure SRST	<input type="checkbox"/>
Configure COR lists	<input type="checkbox"/>
Define COR labels	<input type="checkbox"/>
Configure COR lists on voice ports	<input type="checkbox"/>
Assign COR list to ephone-DN	<input type="checkbox"/>

**Answer:**





**Steps**



**Question: 11**

At what point does the MGCP call agent release the setup of the call path to the residential gateways?

- A. After the call agent has been notified that an event occurred at the source residential gateway
- B. After the call agent has been notified of an event and has instructed the source residential gateway to create a connection
- C. Does not release call path setup
- D. After the call agent has sent a connection request to both the source and destination and has relayed a modify-connection request to the source so that the source and destination can set up the call path
- E. After the call agent has forwarded session description protocol information to the destination from the source and has sent a modify connection to the destination and a create-connection request to the source

**Answer: D**

**Question: 12**

Which two codes together make up the number that follows the E.164 recommendation numbering scheme? (Choose two.)

- A. Country code
- B. Subscriber code
- C. National destination code
- D. Provider code

**Answer: A, B**

**Question: 13**

When using CUBE, which two statements describe how media flow-through differs from media flow-around? (Choose two.)

- A. Media flow-around provides address hiding by terminating both signaling and RTP streams.
- B. Media flow-through terminates the signaling channel and the RTP streams flow directly between endpoints.
- C. Media flow-around and media flow-through function in a similar manner, but media flow-around supports NAT traversal.
- D. Media flow-through terminates the RTP streams but allows signaling to flow directly between endpoints.
- E. Media flow-around terminates the signaling stream and allows RTP streams to flow directly between endpoints.
- F. Media flow-through provides address hiding by terminating both signaling and RTP streams.

**Answer: E, F**



SAMPLE EXAM



### Pass4sure \$89 Lifetime Membership Features;

- Pass4sure \$89 Lifetime Membership includes Over **2500** Exams in One Price.
- **All** Pass4sure **Questions and Answers** are included in \$89 package.
- **All** Pass4sure audio exams are included **free** in package (See List).
- **All** Pass4sure study guides are included **free** in package (See List).
- **Lifetime** login access, no hidden fee, no login expiry.
- **Free updates** for Lifetime.
- **Free Download Access** to All new exams added in future.
- Accurate answers with **explanations** (If applicable).
- **Verified answers** researched by industry experts.
- Study Material **updated** on regular basis.
- Questions, Answers and Study Guides are downloadable in **PDF** format.
- Audio Exams are downloadable in **MP3** format.
- **No authorization** code required to open exam.
- **Portable** anywhere.
- 100% success **Guarantee**.
- **Fast**, helpful support **24x7**.



View list of All exams (Q&A) provided in \$89 membership;  
<http://www.ipass4sure.com/allexams.asp>

View list of All Study Guides (SG) provided FREE for members;  
<http://www.ipass4sure.com/study-guides.asp>

View list of All Audio Exams (AE) provided FREE for members;  
<http://www.ipass4sure.com/audio-exams.asp>

Download All Exams Sample QAs.  
<http://www.ipass4sure.com/samples.asp>

To purchase \$89 Lifetime Full Access Membership click here (One time fee)  
<https://www.regnow.com/softsell/nph-softsell.cgi?item=30820-3>

3COM	CompTIA	Filemaker	IBM	LPI	OMG	Sun
ADOBE	ComputerAssociates	Fortinet	IISFA	McAfee	Oracle	Sybase
APC	CWNP	Foundry	Intel	McData	PMI	Symantec
Apple	DELL	Fujitsu	ISACA	Microsoft	Polycom	TeraData
BEA	ECCouncil	GuidanceSoftware	ISC2	Mile2	RedHat	TIA
BICSI	EMC	HDI	ISEB	NetworkAppliance	Sair	Tibco
CheckPoint	Enterasys	Hitachi	ISM	Network-General	SASInstitute	TruSecure
Cisco	ExamExpress	HP	Juniper	Nokia	SCP	Veritas
Citrix	Exin	Huawei	Legato	Nortel	See-Beyond	Vmware
CIW	ExtremeNetworks	Hyperion	Lotus	Novell	SNIA	

and many others.. See complete list [Here](#)

