

# **Examcollection**

<http://www.ipass4sure.com/examcollection.htm>



<http://www.ipass4sure.com>

# 642-382

**Cisco**

*Cisco Express Foundation for Field Engineers*

<http://www.ipass4sure.com/exams.asp?examcode=642-382>

Thousands of IT Professionals before you have already passed their 642-382 certification exams using the Cisco 642-382 Practice Exam from ipass4sure.com. Once you start using our 642-382 exam questions you simply can't stop! You are guaranteed to pass your Cisco 642-382 test with ease and in your first attempt.

Here's what you can expect from the ipass4sure Cisco 642-382 course:

- \* Up-to-Date Cisco 642-382 questions designed to familiarize you with the real exam.
- \* 100% correct Cisco 642-382 answers you simply can't find in other 642-382 courses.
- \* All of our tests are easy to download. Your file will be saved as a 642-382 PDF.
- \* Cisco 642-382 brain dump free content featuring the real 642-382 test questions.

Cisco 642-382 Certification Exam is of core importance both in your Professional life and Cisco Certification Path. With Cisco Certification you can get a good job easily in the market and get on your path for success. Professionals who passed Cisco 642-382 Certification Exam are an absolute favorite in the industry. If you pass Cisco 642-382 Certification Exam then career opportunities are open for you.

Our 642-382 Questions & Answers provide you an easy solution to your Cisco 642-382 Exam Preparation. Our 642-382 Q&As contains the most updated Cisco 642-382 real tests. You can use our 642-382 Q&As on any PC with most versions of Acrobat Reader and prepare the exam easily.

# **DEMO EXAM**

For Full Version visit

<http://www.ipass4sure.com/allexams.asp>

**MIXED QUESTION.**

---

**QUESTION 1**

You have applied a firewall configuration to your router using the Cisco Router and Security Device Manager (SDM) Firewall Wizard. You find that you are now locked out and access via Cisco SDM is denied. After accessing the router via the console port, what must you do to regain access via Cisco SDM?

- A. Create a loopback interface and connect to that IP Address for management purpose when the configuration has been applied to the router
- B. Modify the access list that denies Cisco SDM access
- C. Specify the Cisco SDM Management Port number to gain access
- D. Generate an RSA key pair between the host and device to allow secure access

Answer: B

---

**QUESTION 2**

Which two features are only supported when using the Cisco Router and Security Device Manager (SDM) Advanced Firewall Wizard and not supported when using the Cisco SDM Basic Firewall wizard? (Choose two.)

- A. Deep-packet inspections
- B. DMZ services
- C. Proxy Authentication
- D. Custom inspection rules
- E. IP Unicast Reverse Path Forwarding on the outside (untrusted) interface

Answer: B,D

---

**QUESTION 3**

You are migrating the network design from using point security products(perimeter router, firewall, VPN Router,IPs) to an integrated security solution using Cisco ISR. During the migration process, you determine that you need to improve VPN performance, what can you do?

- A. Upgrade the Cisco IOS image on the ISR to the VPN bundle
- B. Install AIM-VPN EPII-PLUS on the ISR
- C. Increase the RAM on the ISR
- D. Enable transparent tunneling using IPSec over TCP

Answer: B

---

**QUESTION 4**

You enter the command show ip ospf neighbor and see "two-way/DROTHER" listed as the state for neighbor 10.1.1.1. What does this status indicate?

- A. The neighbor 10.1.1.1 is the DR
- B. DR and BDR election is in progress
- C. The neighbor relationship with 10.1.1.1 has not yet completed
- D. The neighbor 10.1.1.1 is not a DR or BDR

Answer: D

---

**QUESTION 5**

Which two statements best describe the wireless core feature set using autonomous access points when implementing repeater topology? (Choose two.)

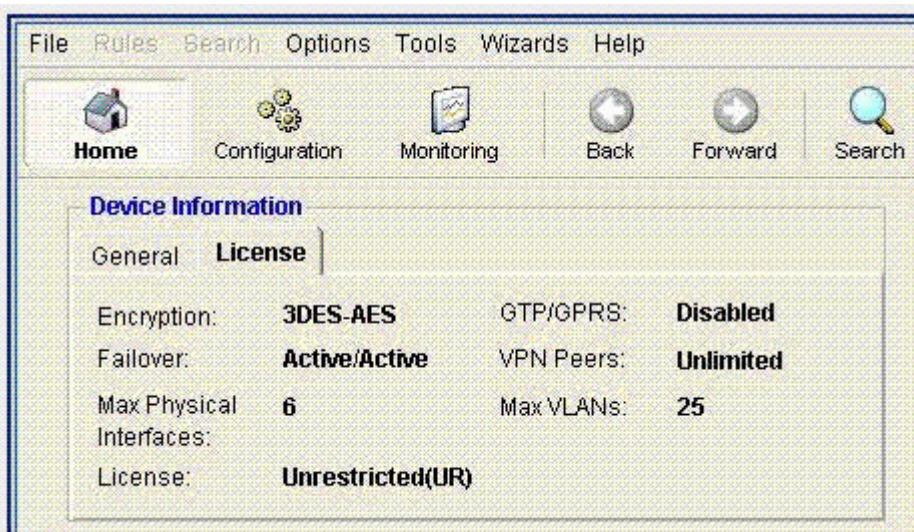
- A. RF overlap between primary and repeater access points should be 50 percent with unique channels configured
- B. Clients that are associated with the repeater access point will have 50 percent less data throughput than clients that are associated with the primary root access point
- C. RF overlap between primary and repeater access points should be 50 percent with the same channel configured
- D. RF Olverlap between access points should be 10 to 15 percent with unique channels configured
- E. Clients that are associated with the repeater access point will have 10 to 15 percent less data throughout than clients that are associated with the primary root access point
- F. RF overlap between primary and repeater access points should be 10 to 15 percent with the same channel configured

Answer: B,C

---

**QUESTION 6**

Exhibit:



You work as a network technician at Certkiller .com. Please study the exhibit carefully. Which statements is correct about the information in the Cisco Adaptive Security Device Manager General and License information screen?

- A. The managed device is a Cisco PIX 515E Security Appliance
- B. The security appliance supports active.active failover only
- C. The security appliance supports 3DES-AES only
- D. The managed device is a Cisco ASA 5540 Security Appliance with VPN premium license enabled

Answer: A

---

**QUESTION 7**

OSPF routes are being redistributed into EIGRP but they are not showing up in the routing table. What are two possible causes? (Choose two.)

- A. No Default metric has been configured for EIGRP
- B. The IP classless command is missing
- C. Synchronization has been turned off
- D. Incorrect distribute lists have been configured
- E. There are mismatched autonomous system numbers
- F. CEF has not been enabled

Answer: A,D

---

**QUESTION 8**

Certkiller .com needs to provide site-to-site VPN, Remote Access VPN and Firewall protection. Which device best supports all three functions?

- A. Cisco PIX
- B. Cisco Router and Security Device Manager
- C. Cisco Concentrator
- D. Cisco ASA

Answer: D

---

**QUESTION 9**

Which three statements are correct about the IEEE 802.3af power over Ethernet standard? (Choose three.)

- A. It defines a powered device to be a PDE
- B. It defines three methods of delivering Power over Ethernet to the discovered power device
- C. It defines power class 0 as being reserved for future use
- D. It defines a port that acts as a power source to be a PSE
- E. It describes five power classes to which a device may belong
- F. It defines how a powered device is detected

Answer: D,E,F

---

SAMPLE EXAM



### Pass4sure \$89 Lifetime Membership Features;

- Pass4sure \$89 Lifetime Membership includes Over **2500** Exams in One Price.
- **All** Pass4sure **Questions and Answers** are included in \$89 package.
- **All** Pass4sure audio exams are included **free** in package (See List).
- **All** Pass4sure study guides are included **free** in package (See List).
- **Lifetime** login access, no hidden fee, no login expiry.
- **Free updates** for Lifetime.
- **Free Download Access** to All new exams added in future.
- Accurate answers with **explanations** (If applicable).
- **Verified answers** researched by industry experts.
- Study Material **updated** on regular basis.
- Questions, Answers and Study Guides are downloadable in **PDF** format.
- Audio Exams are downloadable in **MP3** format.
- **No authorization** code required to open exam.
- **Portable** anywhere.
- 100% success **Guarantee**.
- **Fast**, helpful support **24x7**.



View list of All exams (Q&A) provided in \$89 membership;  
<http://www.ipass4sure.com/allexams.asp>

View list of All Study Guides (SG) provided FREE for members;  
<http://www.ipass4sure.com/study-guides.asp>

View list of All Audio Exams (AE) provided FREE for members;  
<http://www.ipass4sure.com/audio-exams.asp>

Download All Exams Sample QAs.  
<http://www.ipass4sure.com/samples.asp>

To purchase \$89 Lifetime Full Access Membership click here (One time fee)  
<https://www.regnow.com/softsell/nph-softsell.cgi?item=30820-3>

3COM	CompTIA	Filemaker	IBM	LPI	OMG	Sun
ADOBE	ComputerAssociates	Fortinet	IISFA	McAfee	Oracle	Sybase
APC	CWNP	Foundry	Intel	McData	PMI	Symantec
Apple	DELL	Fujitsu	ISACA	Microsoft	Polycom	TeraData
BEA	ECCouncil	GuidanceSoftware	ISC2	Mile2	RedHat	TIA
BICSI	EMC	HDI	ISEB	NetworkAppliance	Sair	Tibco
CheckPoint	Enterasys	Hitachi	ISM	Network-General	SASInstitute	TruSecure
Cisco	ExamExpress	HP	Juniper	Nokia	SCP	Veritas
Citrix	Exin	Huawei	Legato	Nortel	See-Beyond	Vmware
CIW	ExtremeNetworks	Hyperion	Lotus	Novell	SNIA	

and many others.. See complete list Here

