

Examcollection

<http://www.ipass4sure.com/examcollection.htm>

4A0-110

Alcatel-Lucent

Alcatel-Lucent Advanced Troubleshooting

<http://www.ipass4sure.com/exams.asp?examcode=4A0-110>

The 4A0-110 practice exam is written and formatted by Certified Senior IT Professionals working in today's prospering companies and data centers all over the world! The 4A0-110 Practice Test covers all the exam topics and objectives and will prepare you for success quickly and efficiently. The 4A0-110 exam is very challenging, but with our 4A0-110 questions and answers practice exam, you can feel confident in obtaining your success on the 4A0-110 exam on your FIRST TRY!

Alcatel-Lucent 4A0-110 Exam Features

- Detailed questions and answers for 4A0-110 exam
- Try a demo before buying any Alcatel-Lucent exam
- 4A0-110 questions and answers, updated regularly
- Verified 4A0-110 answers by Experts and bear almost 100% accuracy
- 4A0-110 tested and verified before publishing
- 4A0-110 examcollection vce questions with exhibits
- 4A0-110 same questions as real exam with multiple choice options

Acquiring Alcatel-Lucent certifications are becoming a huge task in the field of I.T. More over these exams like 4A0-110 exam are now continuously updating and accepting this challenge is itself a task. This 4A0-110 test is an important part of Alcatel-Lucent certifications. We have the resources to prepare you for this. The 4A0-110 exam is essential and core part of Alcatel-Lucent certifications and once you clear the exam you will be able to solve the real life problems yourself. Want to take advantage of the Real 4A0-110 Test and save time and money while developing your skills to pass your Alcatel-Lucent 4A0-110 Exam? Let us help you climb that ladder of success and pass your 4A0-110 no

DEMO EXAM

For Full Version visit

<http://www.ipass4sure.com/allexams.asp>

Question: 1

Two routers are physically connected to each other over Ethernet port 1/1/1.

Review the configuration information shown below. What state should the OSPF neighbor be in?

```
config> port 1/1/1
      no shutdown
      router interface toNode2
        address 10.1.5.1/24
        port 1/1/1
      router ospf
        area 0.0.0.0
          interface "toNode2"
            hello-interval 15
            dead-interval 40
```

Node 2

```
config> port 1/1/1
      no shutdown
      router interface toNode1
        address 10.1.5.2/24
        port 1/1/1
      router ospf
        area 0.0.0.0
          interface "toNode1"
```

- A. INIT
- B. EXCHANGE
- C. EXSTART
- D. FULL
- E. No OSPF neighbor

Answer: E

Question: 2

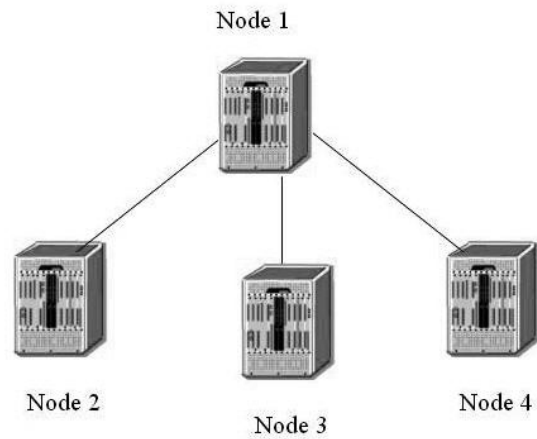
Which of the following debug statements can be used to troubleshoot if the OSPF adjacency is staying at xstart state? Select two answers.

- A. Debug router ospf rtm
- B. Debug router ospf packet dbdescr
- C. Debug router ospf neighbor
- D. Debug router ospf packet hello
- E. Debug router ospf spf

Answer: B, C

Question: 3

Based on the following configuration, which of the following statements are true? Choose all that apply.



Node-1

```

config>router>ospf#
area 0.0.0.0
interface "to-Node-2"
metric 50
authentication-key "DoGpEhE4333mNp52Iug6Z82" hash2
interface "to-Node-3"
metric 50
area 0.0.0.1
nssa
originate-default-route
interface "to-Node-4"
metric 50
  
```

Node-2

```

config>router>ospf#
area 0.0.0.0
interface "to-Node-1"
authentication-key "Sb77iS4bPCeH2&rm5iaFuHAXNbniAg82" hash2
  
```

Node-3

```

config>router>ospf#
area 0.0.0.0
interface "to-Node-1"
hello-interval 15
  
```

Node-4

```

config>router>ospf#
area 0.0.0.1
interface "to-Node-1"
metric 50
  
```

- A. No OSPF adjacency found on Node 1
- B. Full OSPF adjacency between Node-1 and Node-2
- C. Full OSPF adjacency between Node-1 and Node-3
- D. Full OSPF adjacency between Node-1 and Node-4
- E. OSPF is enabled on Node 1

Answer: B, E

Question: 4

Two routers are physically connected to each other over Ethernet port 1/1/1. Review the configuration information below. What state should the OSPF neighbor be in?

Pass4sure Certification Exam Features;

- Pass4sure offers over **2500** Certification exams for professionals.
- More than **98,800** Satisfied Customers Worldwide.
- Average **99.8%** Success Rate.
- Over **120** Global Certification Vendors Covered.
- Services of **Professional & Certified Experts** available via support.
- Free **90 days** updates to match real exam scenarios.
- **Instant Download Access!** No Setup required.
- Price as low as **\$19**, which is 80% more **cost effective** than others.
- **Verified answers** researched by industry experts.
- Study Material **updated** on regular basis.
- Questions / Answers are downloadable in **PDF** format.
- Mobile Device Supported (**Android, iPhone, iPod, iPad**)
- **No authorization** code required to open exam.
- **Portable** anywhere.
- **Guaranteed Success.**
- **Fast**, helpful support **24x7**.

View list of All certification exams offered;

<http://www.ipass4sure.com/all exams.asp>

View list of All Study Guides (SG);

<http://www.ipass4sure.com/study-guides.asp>

View list of All Audio Exams (AE);

<http://www.ipass4sure.com/audio-exams.asp>

Download Any Certification Exam DEMO.

<http://www.ipass4sure.com/samples.asp>

To purchase Full version of exam click below;

<http://www.ipass4sure.com/all exams.asp>

3COM	CompTIA	Filemaker	IBM	LPI	OMG	Sun
ADOBE	ComputerAssociates	Fortinet	IISFA	McAfee	Oracle	Sybase
APC	CWNP	Foundry	Intel	McData	PMI	Symantec
Apple	DELL	Fujitsu	ISACA	Microsoft	Polycom	TeraData
BEA	ECCouncil	GuidanceSoftware	ISC2	Mile2	RedHat	TIA
BICSI	EMC	HDI	ISEB	NetworkAppliance	Sair	Tibco
CheckPoint	Enterasys	Hitachi	ISM	Network-General	SASInstitute	TruSecure
Cisco	ExamExpress	HP	Juniper	Nokia	SCP	Veritas
Citrix	Exin	Huawei	Legato	Nortel	See-Beyond	Vmware
CIW	ExtremeNetworks	Hyperion	Lotus	Novell	Google	

and many others.. See complete list [Here](#)

