

# **Examcollection**

<http://www.ipass4sure.com/examcollection.htm>

# 350-020

**Cisco**

*CCIE SP Optical Qualification*

<http://www.ipass4sure.com/exams.asp?examcode=350-020>

The 350-020 practice exam is written and formatted by Certified Senior IT Professionals working in today's prospering companies and data centers all over the world! The 350-020 Practice Test covers all the exam topics and objectives and will prepare you for success quickly and efficiently. The 350-020 exam is very challenging, but with our 350-020 questions and answers practice exam, you can feel confident in obtaining your success on the 350-020 exam on your FIRST TRY!

## Cisco 350-020 Exam Features

- Detailed questions and answers for 350-020 exam
- Try a demo before buying any Cisco exam
- 350-020 questions and answers, updated regularly
- Verified 350-020 answers by Experts and bear almost 100% accuracy
- 350-020 tested and verified before publishing
- 350-020 examcollection vce questions with exhibits
- 350-020 same questions as real exam with multiple choice options

Acquiring Cisco certifications are becoming a huge task in the field of I.T. More over these exams like 350-020 exam are now continuously updating and accepting this challenge is itself a task. This 350-020 test is an important part of Cisco certifications. We have the resources to prepare you for this. The 350-020 exam is essential and core part of Cisco certifications and once you clear the exam you will be able to solve the real life problems yourself. Want to take advantage of the Real 350-020 Test and save time and money while developing your skills to pass your Cisco 350-020 Exam? Let us help you climb that ladder of success and pass your 350-020 now!

# **DEMO EXAM**

For Full Version visit

<http://www.ipass4sure.com/allexams.asp>

<b>Exam Name:</b>	<b>CCIE SP Optical Qualification</b>		
<b>Exam Type</b>	<b>Cisco</b>	<b>Exam Code:</b>	<b>350-020</b>
<b>Doc. Type:</b>	<b>Q &amp; A with Explanations</b>	<b>Total Questions:</b>	<b>400</b>

**Question: 1**

What IE is not mandatory in a Q.931 Service msg?

- A. Bearer capability
- B. Channel ID
- C. Message Type
- D. Change Status
- E. Call Reference

**Answer : A**

**Question: 2**

The purpose of Administrative Distance, as used by Cisco routers, is:

- A. To choose between routes from different routing protocols when receiving updates for the same network
- B. To identify which routing protocol forwarded the update
- C. To define the distance to the destination used in deciding the best path
- D. To be used only for administrative purposes

**Answer : A**

**Question: 3**

What is the maximum PMD value of a 100km fiber segment if the cable is specified with 0.5ps/km ? (worst case)?

- A. 0.005ps
- B. .05ps
- C. 5ps
- D. 50ps
- E. 500ps

**Answer : C**

**Question: 4**

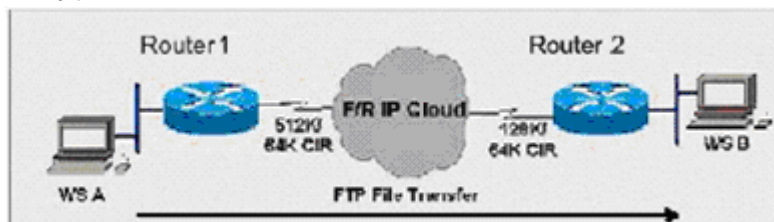
What is the equivalent of 50 GHz spacing in DWDM in terms of nm?

- A. 1.6 nm
- B. 0.8 nm
- C. 0.4 nm
- D. 0.2 nm

**Answer: C**

**Question: 5**

Exhibit:



<b>Exam Name:</b>	<b>CCIE SP Optical Qualification</b>		
<b>Exam Type</b>	<b>Cisco</b>	<b>Exam Code:</b>	<b>350-020</b>
<b>Doc. Type:</b>	<b>Q &amp; A with Explanations</b>	<b>Total Questions:</b>	<b>400</b>

Router ES1 has a 512K-access port into the frame relay cloud. Router ES2 has 128K-access port into the frame relay cloud. The two routers are connected with symmetrical PVCs that are configured for 64K committed information rate (CIR). What Frame Relay Traffic Shaping map-class sub-command should be entered on Router A to prevent workstation A from overrunning the access port on Router B?

Image: 020-a-5-1.jpg

- A. frame-relay traffic-rate 128000 512000
- B. frame-relay traffic-rate 64000 512000
- C. frame-relay traffic-rate 512000 64000
- D. frame-relay traffic-rate 128000 64000
- E. frame-relay traffic-rate 64000 128000

**Answer: E**

**Question: 6**

If a host sends a TCP segment with the RST flag set, it means:

- A. The receiver should send all data in the reassembly buffer to the application receiving it immediately.
- B. The receiver should reset the session.
- C. Any routers between the source and destination hosts should reset the state of the connection in their buffers.
- D. The receiver should make certain its send buffer is pushed onto the wire.

**Answer : B**

**Question: 7**

How many E1 channels can STM-1 frame transport?

- A. 7
- B. 21
- C. 63
- D. 84

**Answer: C**

**Question: 8**

BGP can implement a policy of 'Route Dampening' to control route instability. What statement about route dampening is NOT correct?

- A. A numeric penalty is applied to a route each time it flaps.
- B. The penalty is exponentially decayed according to parameters, such as half-life-time.
- C. The history of unstable routes is forwarded back to the sender to control future updates.
- D. The route is eventually suppressed based on a configurable 'suppress limit'.

**Answer : C**

**Question: 9**

MPLS traffic engineering data is carried by:

- A. Opaque LSAs or IS-IS TLVs
- B. BGP MEDs
- C. RTP or RTCP packets

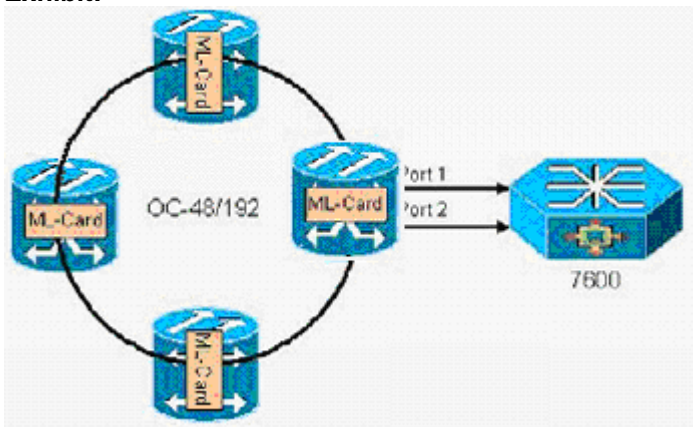
Exam Name:	CCIE SP Optical Qualification		
Exam Type	Cisco	Exam Code:	350-020
Doc. Type:	Q & A with Explanations	Total Questions:	400

D. MBGP

**Answer: A**

**Question: 10**

**Exhibit:**



In the diagram, if a resilient packet ring (RPR) is built between ML-series cards, \_\_\_\_ restoration exists on the ring, while the redundant connections to the 7609 rely on \_\_\_\_ protection.  
Image: 020-a-10-1.jpg

- A. 50 ms, STP
- B. STP, STP
- C. STP, 1+1 APS
- D. 50ms, 50ms

**Answer: A**

**Question: 11**

How many E-1s can be aggregated (maximum) and mapped into a VC-12 Signal?

- A. 1
- B. 7
- C. 14
- D. 28
- E. 32

**Answer: A**

**Question: 12**

What is Fast EtherChannel?

- A. A feature to bundle multiple Ethernet point-to-point links quickly into one logical high speed link
- B. A feature to bundle multiple Fast-Ethernet point-to-point links into one logical high speed link
- C. Another name for full-duplex Fast Ethernet
- D. Another name for Gigabit Ethernet
- E. None of the above

**Answer: B**

**Question: 13**

**Exhibit:**



## Pass4sure Certification Exam Features;

- Pass4sure offers over **2500** Certification exams for professionals.
- More than **98,800** Satisfied Customers Worldwide.
- Average **99.8%** Success Rate.
- Over **120** Global Certification Vendors Covered.
- Services of **Professional & Certified Experts** available via support.
- Free **90 days** updates to match real exam scenarios.
- **Instant Download Access!** No Setup required.
- Price as low as **\$19**, which is 80% more **cost effective** than others.
- **Verified answers** researched by industry experts.
- Study Material **updated** on regular basis.
- Questions / Answers are downloadable in **PDF** format.
- Mobile Device Supported (**Android, iPhone, iPod, iPad**)
- **No authorization** code required to open exam.
- **Portable** anywhere.
- **Guaranteed Success.**
- **Fast**, helpful support **24x7**.



View list of All certification exams offered;  
<http://www.ipass4sure.com/all exams.asp>

View list of All Study Guides (SG);  
<http://www.ipass4sure.com/study-guides.asp>

View list of All Audio Exams (AE);  
<http://www.ipass4sure.com/audio-exams.asp>

Download Any Certification Exam DEMO.  
<http://www.ipass4sure.com/samples.asp>

To purchase Full version of exam click below;  
<http://www.ipass4sure.com/all exams.asp>

3COM	CompTIA	Filemaker	IBM	LPI	OMG	Sun
ADOBE	ComputerAssociates	Fortinet	IISFA	McAfee	Oracle	Sybase
APC	CWNP	Foundry	Intel	McData	PMI	Symantec
Apple	DELL	Fujitsu	ISACA	Microsoft	Polycom	TeraData
BEA	ECCouncil	GuidanceSoftware	ISC2	Mile2	RedHat	TIA
BICSI	EMC	HDI	ISEB	NetworkAppliance	Sair	Tibco
CheckPoint	Enterasys	Hitachi	ISM	Network-General	SASInstitute	TruSecure
Cisco	ExamExpress	HP	Juniper	Nokia	SCP	Veritas
Citrix	Exin	Huawei	Legato	Nortel	See-Beyond	Vmware
CIW	ExtremeNetworks	Hyperion	Lotus	Novell	Google	

and many others.. See complete list [Here](#)

