

# **Examcollection**

<http://www.ipass4sure.com/examcollection.htm>

# 3302-1

## Avaya

### *Avaya Contact Center Control Manager Implementation and Maintenance Exam*

The 3302-1 practice exam is written and formatted by Certified Senior IT Professionals working in today's prospering companies and data centers all over the world! The 3302-1 Practice Test covers all the exam topics and objectives and will prepare you for success quickly and efficiently. The 3302-1 exam is very challenging, but with our 3302-1 questions and answers practice exam, you can feel confident in obtaining your success on the 3302-1 exam on your FIRST TRY!

#### Avaya 3302-1 Exam Features

- Detailed questions and answers for 3302-1 exam
- Try a demo before buying any Avaya exam
- 3302-1 questions and answers, updated regularly
- Verified 3302-1 answers by Experts and bear almost 100% accuracy
- 3302-1 tested and verified before publishing
- 3302-1 examcollection vce questions with exhibits
- 3302-1 same questions as real exam with multiple choice options

Acquiring Avaya certifications are becoming a huge task in the field of I.T. More over these exams like 3302-1 exam are now continuously updating and accepting this challenge is itself a task. This 3302-1 test is an important part of Avaya certifications. We have the resources to prepare you for this. The 3302-1 exam is essential and core part of Avaya certifications and once you clear the exam you will be able to solve the real life problems yourself. Want to take advantage of the Real 3302-1 Test and save time and money while developing your skills to pass your Avaya 3302-1 Exam? Let us help you climb that ladder of success and pass your 3302-1 now!

# **DEMO EXAM**

For Full Version visit

<http://www.ipass4sure.com/allexams.asp>

**QUESTION: 1**

What are three advantages of the Audit Server? (Choose three.)

- A. the ability to rollback the CM administration
- B. the ability to restart the License, Provisioning, and Synchronizer services in Windows in event of a failure
- C. the ability to schedule delayed saves during maintenance hours
- D. ability to provide a Security Firewall to Avaya Contact Center Control Manager (ACCCM)
- E. auditing to a single field level
- F. unlimited database entries

**Answer:** A, E, F

**QUESTION: 2**

You have installed Avaya Contact Center Control Manager (ACCCM) and you need to synchronize with the Communication Manager (CM) for the first time. Which statement is true regarding the Synchronizer?

- A. The synchronizer can be used for initial data migration only.
- B. Only the initial synchronization will be done through the Web interface.
- C. The Synchronizer can only be used as a sync service that synchronizes information on a daily basis.
- D. Only the initial synchronization will be done from the Synchronizer windows application.

**Answer:** C

**QUESTION: 3**

A customer is installing Avaya Contact Center Control Manager (ACCCM) with two locations and two Communication Managers (CM). The customer requires that the ACCCM controls the number ranges that are allowed to be configured for extensions on each CM. Location 1 will be allowed extensions 1000-1999, and Location 2 will be allowed extensions 2000-2999. Using ACCCM, how can this be configured?

- A. Add two dial plans in ACCCM. Dial Plan 1 would be configured for Extensions Range 1000-1999, Range Management enabled. Dial Plan 2 would be configured for Extensions Range 2000-2999, Range Management enabled. Dial Plan 1 is assigned to Location 1 and Dial Plan 2 is assigned to Location 2.
- B. Add two dial plans in ACCCM. Dial Plan 1 would be configured for Extensions Range 1000-1999, In Range enabled. Dial Plan 2 would be configured for Extensions

Range 2000-2999, In Range cabled. Dial Plan 1 is assigned to Location 1 and Dial Plan 2 is assigned to Location 2.

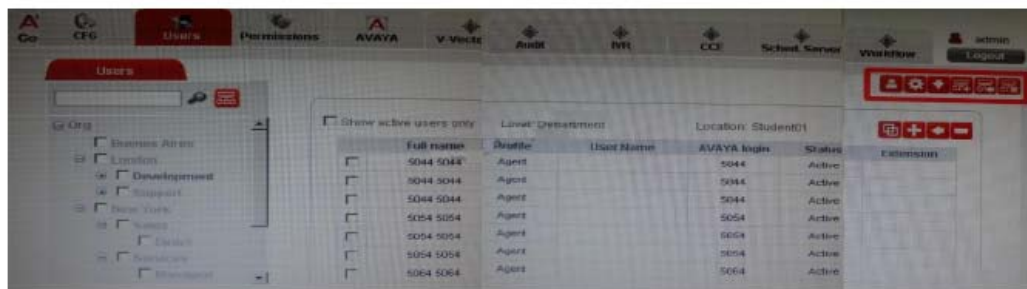
C. Add one dial plan in ACCCM. The Dial Plan would be configured for Extensions Range 1000-2999, Range Management enabled. The Dial Plan is assigned to Location 1 and to Location 2.

D. Add one dial plan in ACCCM. The Dial Plan would be configured for Extensions Range 1000-2999, In Range enabled. The Dial Plan is assigned to Location 1 and to Location 2.

**Answer:** B

**QUESTION:** 4

The Avaya Contact Center Control Manager (ACCCM) Web UI is responsible for the ACCCM Admin Web interface. There are multiple functional buttons and action bars available on each tab. The exhibit depicts the Users tab. What is the section outlined in red in the illustration?



- A. Main details area
- B. Organization Chart action bar
- C. Quick Search
- D. User/agent action bar

**Answer:** D

**QUESTION:** 5

A customer plans to integrate Avaya Contact Center Control Manager (ACCCM) with Active Directory. Which statement describes the ACCCM requirement that is mandatory for connectivity?

- A. The ACCCM server must be a member of the domain or a trusted domain.
- B. The LDAP Port must be 636.
- C. Provisioning server must run with Administrative Domain Account.

D. Windows server must be 2008 R2 64-bit.

**Answer:** A

**QUESTION: 6**

A customer has logged into the Avaya Contact Center Control Manager (ACCCM) system web interface multiple times. After closing and reentering the application multiple times, a message is received that there are "no licenses available". How can this problem be resolved?

- A. Restart the Licensing server.
- B. Restart the Import service.
- C. Restart the Provisioning server.
- D. Restart the Synchronizer service.

**Answer:** A

**QUESTION: 7**

A customer has deployed Avaya Contact Center Control Manager (ACCCM) with an Avaya Call Management System (CMS) solution. They would like to give their agents the ability to change their skill assignments without breaking the user permission level. How would you best match the key capabilities that the customer requires?

- A. Allow agents to change their skill assignments.
- B. Assign agents into an extension group.
- C. Assign agents into ACCCM virtual groups.
- D. Assign agents into organization chart teams.

**Answer:** C

**QUESTION: 8**

When integrating Avaya Contact Center Control Manager (ACCCM) with Avaya Quality Monitoring, it is necessary to create a login ID for the Quality Monitoring Database. Which database role membership must be selected when creating the user?

- A. witness\_user\_role
- B. db\_owner
- C. db\_securityadmin
- D. db\_datawriter

## Pass4sure Certification Exam Features;

- Pass4sure offers over **4500** Certification exams for professionals.
- More than **98,800** Satisfied Customers Worldwide.
- Average **99.8%** Success Rate.
- Over **150** Global Certification Vendors Covered.
- Services of **Professional & Certified Experts** available via support.
- Free **90 days** updates to match real exam scenarios.
- **Instant Download Access!** No Setup required.
- Price as low as **\$19**, which is 80% more **cost effective** than others.
- **Verified answers** researched by industry experts.
- Study Material **updated** on regular basis.
- Questions / Answers are downloadable in **PDF** format.
- Mobile Device Supported (**Android, iPhone, iPod, iPad**)
- **No authorization** code required to open exam.
- **Portable** anywhere.
- **Guaranteed Success.**
- **Fast**, helpful support **24x7**.



View list of All certification exams offered;  
<http://www.ipass4sure.com/all exams.asp>

View list of All Study Guides (SG);  
<http://www.ipass4sure.com/study-guides.asp>

View list of All Audio Exams (AE);  
<http://www.ipass4sure.com/audio-exams.asp>

Download Any Certification Exam DEMO.  
<http://www.ipass4sure.com/samples.asp>

To purchase Full version of exam click below;  
<http://www.ipass4sure.com/all exams.asp>

3COM	CompTIA	Filemaker	IBM	LPI	OMG	Sun
ADOBE	ComputerAssociates	Fortinet	IISFA	McAfee	Oracle	Sybase
APC	CWNP	Foundry	Intel	McData	PMI	Symantec
Apple	DELL	Fujitsu	ISACA	Microsoft	Polycom	TeraData
BEA	ECCouncil	GuidanceSoftware	ISC2	Mile2	RedHat	TIA
BICSI	EMC	HDI	ISEB	NetworkAppliance	Sair	Tibco
CheckPoint	Enterasys	Hitachi	ISM	Network-General	SASInstitute	TruSecure
Cisco	ExamExpress	HP	Juniper	Nokia	SCP	Veritas
Citrix	Exin	Huawei	Legato	Nortel	See-Beyond	Vmware
CIW	ExtremeNetworks	Hyperion	Lotus	Novell	Google	

and many others.. See complete list [Here](#)

