

Examcollection

<http://www.ipass4sure.com/examcollection.htm>



<http://www.ipass4sure.com>

1Y0-222

Citrix

Citrix MetaFrame XP Presentation Server

<http://www.ipass4sure.com/exams.asp?examcode=1Y0-222>

Thousands of IT Professionals before you have already passed their 1Y0-222 certification exams using the Citrix 1Y0-222 Practice Exam from ipass4sure.com. Once you start using our 1Y0-222 exam questions you simply can't stop! You are guaranteed to pass your Citrix 1Y0-222 test with ease and in your first attempt.

Here's what you can expect from the ipass4sure Citrix 1Y0-222 course:

- * Up-to-Date Citrix 1Y0-222 questions designed to familiarize you with the real exam.
- * 100% correct Citrix 1Y0-222 answers you simply can't find in other 1Y0-222 courses.
- * All of our tests are easy to download. Your file will be saved as a 1Y0-222 PDF.
- * Citrix 1Y0-222 brain dump free content featuring the real 1Y0-222 test questions.

Citrix 1Y0-222 Certification Exam is of core importance both in your Professional life and Citrix Certification Path. With Citrix Certification you can get a good job easily in the market and get on your path for success. Professionals who passed Citrix 1Y0-222 Certification Exam are an absolute favorite in the industry. If you pass Citrix 1Y0-222 Certification Exam then career opportunities are open for you.

Our 1Y0-222 Questions & Answers provide you an easy solution to your Citrix 1Y0-222 Exam Preparation. Our 1Y0-222 Q&As contains the most updated Citrix 1Y0-222 real tests. You can use our 1Y0-222 Q&As on any PC with most versions of Acrobat Reader and prepare the exam easily.

DEMO EXAM

For Full Version visit

<http://www.ipass4sure.com/allexams.asp>

Question: 1.

Which of the following recreates the local host cache on a MetaFrame XP server?

- A. Running "dsmaint recreatelhc"
- B. Stopping and restarting the IMA service
- C. Stopping the IMA service; setting HKLM\Software\Citrix\IMA\Runtime\CacheLHC to 0; starting the IMA service
- D. Stopping the IMA service; setting the HKLM\Software\Citrix\IMA\Runtime\DSRequired to 1; starting the IMA service

Answer: A

Explanation:

Should be answer A. Answer B: Stopping and restarting the IMA service only forces a refresh of the local host cache. If the lhc needs to be recreated (which the question states), you need to run 'dsmaint recreatelhc'.

Reference:

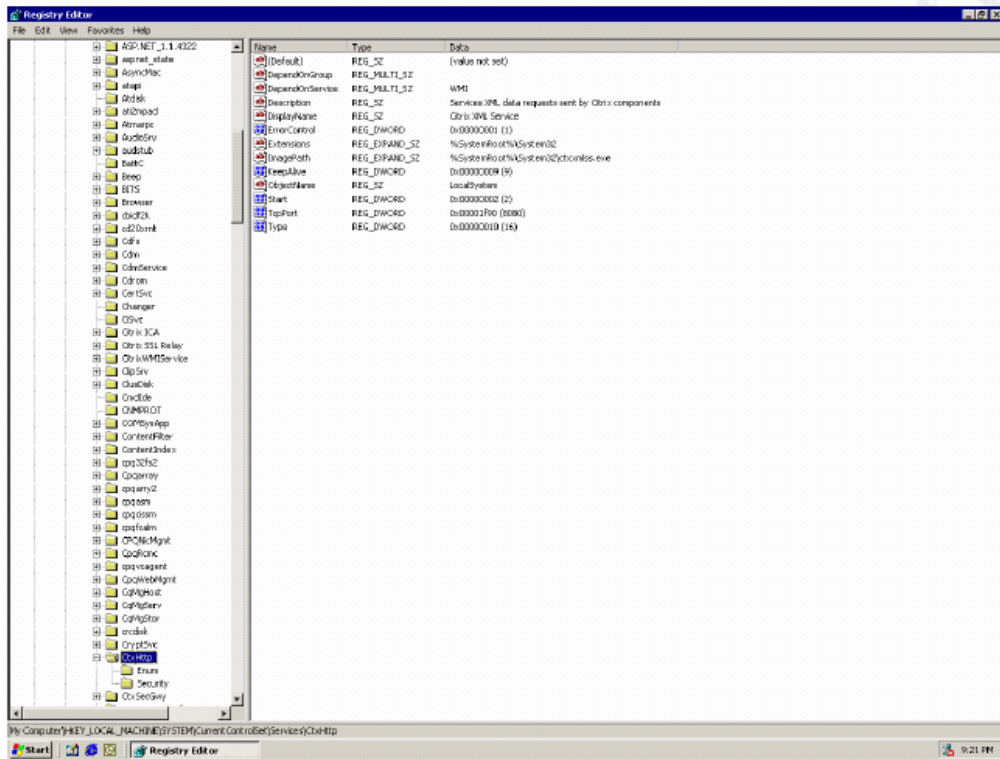
<http://support.citrix.com/kb/entry!default.jspa?categoryID=118&entryID=1803&fromSearchPage=true>

Question: 2.

Where in the registry can a Citrix administrator locate the TCP port for the Citrix XML Service?

- A. HKEY_LOCAL_MACHINE\SYSTEM\Software\Citrix\TcpPort
- B. HKEY_LOCAL_MACHINE\SYSTEM\CurrentControlSet\Control\CtxHttp\TcpPort
- C. HKEY_LOCAL_MACHINE\SYSTEM\Software\Services\CtxHttp\TcpPort
- D. HKEY_LOCAL_MACHINE\SYSTEM\CurrentControlSet\Services\CtxHttp\TcpPort

Answer: D



Reference:

The citrix course material for 1y0-221 on page 616.

Question: 3.

Arthur must rename the Program Neighborhood configuration file on his MetaFrame XP Server.

Which tool can be used to perform this task?

- A. Internet Explorer
- B. ICA Client Web Manager
- C. The Management Console for MetaFrame XP
- D. Program Neighborhood Agent Administration Tool

Answer: D

Question: 4.

Which command can be used to automatically configure the ICA Client reconnection settings on a MetaFrame XP server or server farm?

- A. acrcfg
- B. icareset
- C. reconnect ica
- D. mfclient /reconnect

Answer: A

Explanation:

acrcfg is used to configure Auto Client Reconnect settings in an MFXP farm or specific server

Question: 5.

Which statements are true concerning the ICA Client? (Choose three)

- A. When in mixed mode, only MetaFrame XP Presentation Servers that are master ICA Browsers respond to UDP broadcasts.
- B. The only method of communication for an ICA Client to a MetaFrame XP Presentation Server is through the XML service.
- C. UDP broadcasts are sent to the ICA browser on TCP port 1494.
- D. By default, Citrix XML Service is installed on the MetaFrame XP Presentation Server.
- E. TCP port 80 is the default configuration for the XML service.

Answer: A, D, E

D: XML is installed by default on every server.

Not C: UDP broadcasts is not using TCP port 1494.

Question: 6.

Which of the following is not a feature of SpeedScreen browser acceleration?

- A. Sectioning enabler
- B. Progressive drawing
- C. Responsive scrolling
- D. Background image delivery

Answer: A

Explanation:

There is no function that is named "Sectioning Enabler" in Speedscreen

Question: 7.

Which Web browser based tool is responsible for allowing users to customize the settings and functionality of the Program Neighborhood agent?

- A. Internet Explorer
- B. ICA Client Web Manager
- C. The Management Console for MetaFrame XP
- D. Program Neighborhood Admin Agent tool

Answer: D

Question: 8.

A user in Los Angeles, which is in the Pacific time zone, logs on to a MetaFrame server in Fort Lauderdale, which is in the Eastern time zone, and launches Microsoft Outlook as a published application.

Which Citrix feature will allow this user's local time stamp to be reflected when viewing and sending emails?

- A. Per Server Time Update
- B. Interprocess Time Manager
- C. Clock update Zone Support
- D. Per User Time Zone Support

Answer: D

SAMPLE EXAM



Pass4sure \$89 Lifetime Membership Features;

- Pass4sure \$89 Lifetime Membership includes Over **2500** Exams in One Price.
- **All** Pass4sure **Questions and Answers** are included in \$89 package.
- **All** Pass4sure audio exams are included **free** in package (See List).
- **All** Pass4sure study guides are included **free** in package (See List).
- **Lifetime** login access, no hidden fee, no login expiry.
- **Free updates** for Lifetime.
- **Free Download Access** to All new exams added in future.
- Accurate answers with **explanations** (If applicable).
- **Verified answers** researched by industry experts.
- Study Material **updated** on regular basis.
- Questions, Answers and Study Guides are downloadable in **PDF** format.
- Audio Exams are downloadable in **MP3** format.
- **No authorization** code required to open exam.
- **Portable** anywhere.
- 100% success **Guarantee**.
- **Fast**, helpful support **24x7**.



View list of All exams (Q&A) provided in \$89 membership;

<http://www.ipass4sure.com/allexams.asp>

View list of All Study Guides (SG) provided FREE for members;

<http://www.ipass4sure.com/study-guides.asp>

View list of All Audio Exams (AE) provided FREE for members;

<http://www.ipass4sure.com/audio-exams.asp>

Download All Exams Sample QAs.

<http://www.ipass4sure.com/samples.asp>

To purchase \$89 Lifetime Full Access Membership click here (One time fee)

<https://www.regnow.com/softsell/nph-softsell.cgi?item=30820-3>

| | | | | | | |
|------------|--------------------|------------------|---------|------------------|--------------|-----------|
| 3COM | CompTIA | Filemaker | IBM | LPI | OMG | Sun |
| ADOBE | ComputerAssociates | Fortinet | IISFA | McAfee | Oracle | Sybase |
| APC | CWNP | Foundry | Intel | McData | PMI | Symantec |
| Apple | DELL | Fujitsu | ISACA | Microsoft | Polycom | TeraData |
| BEA | ECCouncil | GuidanceSoftware | ISC2 | Mile2 | RedHat | TIA |
| BICSI | EMC | HDI | ISEB | NetworkAppliance | Sair | Tibco |
| CheckPoint | Enterasys | Hitachi | ISM | Network-General | SASInstitute | TruSecure |
| Cisco | ExamExpress | HP | Juniper | Nokia | SCP | Veritas |
| Citrix | Exin | Huawei | Legato | Nortel | See-Beyond | Vmware |
| CIW | ExtremeNetworks | Hyperion | Lotus | Novell | SNIA | |

and many others.. See complete list [Here](#)

