

Examcollection

<http://www.ipass4sure.com/examcollection.htm>

1D0-541

CIW

CIW v5 Database Design Specialist

<http://www.ipass4sure.com/exams.asp?examcode=1D0-541>

The 1D0-541 practice exam is written and formatted by Certified Senior IT Professionals working in today's prospering companies and data centers all over the world! The 1D0-541 Practice Test covers all the exam topics and objectives and will prepare you for success quickly and efficiently. The 1D0-541 exam is very challenging, but with our 1D0-541 questions and answers practice exam, you can feel confident in obtaining your success on the 1D0-541 exam on your FIRST TRY!

CIW 1D0-541 Exam Features

- Detailed questions and answers for 1D0-541 exam
- Try a demo before buying any CIW exam
- 1D0-541 questions and answers, updated regularly
- Verified 1D0-541 answers by Experts and bear almost 100% accuracy
- 1D0-541 tested and verified before publishing
- 1D0-541 examcollection vce questions with exhibits
- 1D0-541 same questions as real exam with multiple choice options

Acquiring CIW certifications are becoming a huge task in the field of I.T. More over these exams like 1D0-541 exam are now continuously updating and accepting this challenge is itself a task. This 1D0-541 test is an important part of CIW certifications. We have the resources to prepare you for this. The 1D0-541 exam is essential and core part of CIW certifications and once you clear the exam you will be able to solve the real life problems yourself. Want to take advantage of the Real 1D0-541 Test and save time and money while developing your skills to pass your CIW 1D0-541 Exam? Let us help you climb that ladder of success and pass your 1D0-541 now!

DEMO EXAM

For Full Version visit

<http://www.ipass4sure.com/allexams.asp>

QUESTION: 1

With regard to databases, what is normalization?

- A. The process of reducing the cardinality of a relation
- B. The process of organizing and refining relations
- C. The process of duplicating data to reduce the number of tables
- D. The process of limiting data stored in a table to a specific range of values

Answer: B

QUESTION: 2

Which three pieces of information did E.F. Codd describe as necessary to retrieve a data value from a relational database?

- A. Attribute, domain, and tuple
- B. Entity, relation name, and domain
- C. Table name, primary key, and entity
- D. Attribute, relation name, and primary key

Answer: D

QUESTION: 3

What is a virtual table?

- A. A virtual table is a relation created as the result of data manipulation; it exists only in computer memory, and is not a permanent part of the database.
- B. A virtual table is a relation stored in the database; it is used when multiple users access the same relation in a database.
- C. A virtual table is a relation derived from the database data dictionary; it contains metadata about a base relation. A virtual table is a relation derived from the database? data dictionary; it contains metadata about a base relation.
- D. A virtual table is a relation that consists of primary and foreign keys for a particular set of relations in a database.

Answer: A

QUESTION: 4

Your enterprise has reached the conceptual design phase for a database project. What is the desired goal at the end of this design phase?

- A. A set of normalized relations
- B. A reviewed entity-relationship (ER) model
- C. An entity-relationship (ER) model with no redundant data
- D. A set of denormalized relations

Answer: B

QUESTION: 5

In which phase of database design do you identify entities, attribute domains, and relationships?

- A. Logical
- B. Physical
- C. Application
- D. Conceptual

Answer: D

QUESTION: 6

Consider the Dept1_Parts and Dept2_Parts relations shown in the exhibit. Which of the following SQL statements would create a set difference of the two relations with the widest variety of Structured Query Language dialects?

Part_ID	Part_Name	Description	Supp_ID
0312	bolt	hexagon bolt	221
0322	screw	capscrew	441
0332	socket screw	button head	551
0342	flange	blind flange	331
0352	socket screw	countersunk	441

Dept1_Parts Relation

Part_ID	Part_Name	Description	Supp_ID
0302	flange	slip-on flange	331
0322	screw	capscrew	441
0332	socket screw	button head	551
0362	bolt	studbolt	441

Dept2_Parts Relation

- A. SELECT * FROM
Dept1_Parts
EXCEPT(SELECT
Part_ID FROM
Dept2_Parts);
- B. SELECT * FROM
Dept1_Parts MINUS
(SELECT Part_ID
FROM Dept2_Parts);
- C. SELECT * FROM
Dept1_Parts
DIFFERENCE
(SELECT Part_ID
FROM Dept2_Parts);
- D. SELECT * FROM
Dept1_Parts WHERE
Part_ID NOT IN
(SELECT Part_ID FROM
Dept2_Parts);

Answer: D

QUESTION: 7

Consider the Information Engineering diagram shown in the exhibit. Building_ID, R_ID, Room_Count and Room_Num are integer numbers, whereas Bldg_Name, Location and Res_Name are all represented by variable-length strings with a maximum of 20 characters. Which SQL statement best implements the RESIDENT relation shown in this diagram?



- A.CREATE TABLE RESIDENT (
R_ID INTEGER NULL PRIMARY KEY, Room_Num FLOAT,
Res_Name VARCHAR, Building_ID INTEGER NULL,
FOREIGN KEY Building_ID REFERENCES BUILDING (Building_ID));
- B.CREATE TABLE RESIDENT (
R_ID INTEGER NOT NULL PRIMARY KEY, Room_Num BINARY,
Res_Name VARCHAR (20), Building_ID INTEGER NOT NULL,
FOREIGN KEY Building_ID REFERENCES BUILDING (Building_ID));
- C.CREATE TABLE RESIDENT (
R_ID INTEGER NOT NULL PRIMARY KEY, Room_Num INTEGER,
Res_Name VARCHAR (20), Building_ID INTEGER NOT NULL);
- D.CREATE TABLE RESIDENT (
R_ID INTEGER NOT NULL PRIMARY KEY,
Room_Num INTEGER, Res_Name VARCHAR (20),
Building_ID INTEGER NOT NULL,
FOREIGN KEY Building_ID REFERENCES BUILDING (Building_ID));

Answer: D

QUESTION: 8

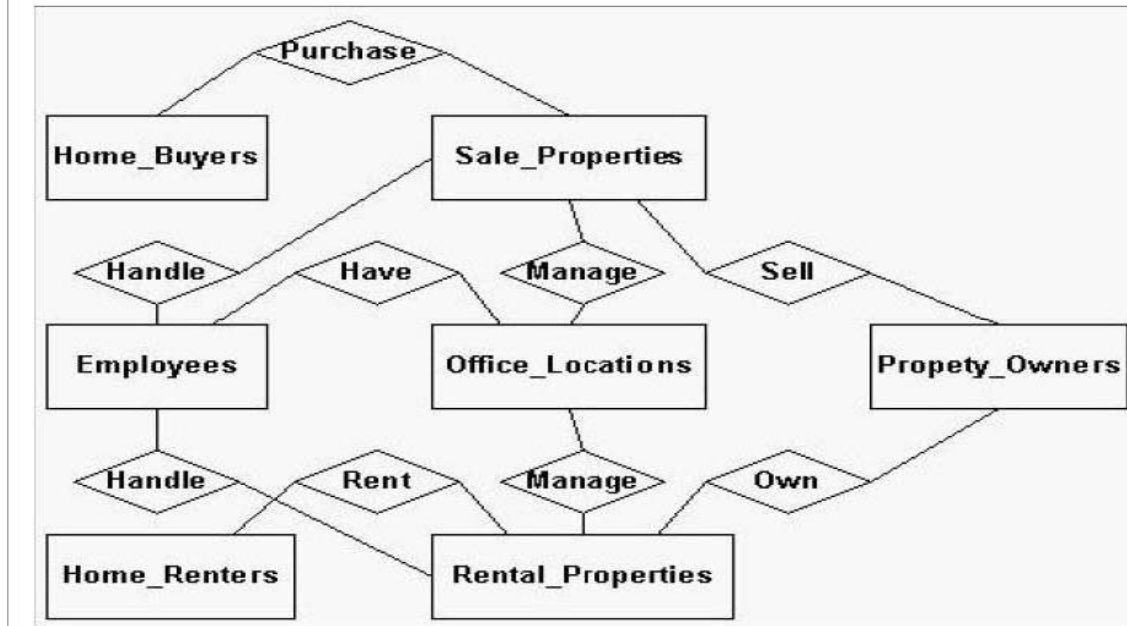
Which term describes one or more database operations that are executed as a single unit?

- A. Update
- B. Transaction
- C. Encapsulation
- D. Operational group

Answer: B

QUESTION: 9

Your enterprise is involved in planning a database project. The exhibit shows the result of one phase of the database design life cycle. Which term best describes the diagram shown in the exhibit?



- A. Information Engineering (IE) data model
- B. Corporate data model
- C. Database requirements model
- D. ERD model

Answer: B

QUESTION: 10



Pass4sure Certification Exam Features;

- Pass4sure offers over **2500** Certification exams for professionals.
- More than **98,800** Satisfied Customers Worldwide.
- Average **99.8%** Success Rate.
- Over **120** Global Certification Vendors Covered.
- Services of **Professional & Certified Experts** available via support.
- Free **90 days** updates to match real exam scenarios.
- **Instant Download Access!** No Setup required.
- Price as low as **\$19**, which is 80% more **cost effective** than others.
- **Verified answers** researched by industry experts.
- Study Material **updated** on regular basis.
- Questions / Answers are downloadable in **PDF** format.
- Mobile Device Supported (**Android, iPhone, iPod, iPad**)
- **No authorization** code required to open exam.
- **Portable** anywhere.
- **Guaranteed Success.**
- **Fast**, helpful support **24x7**.



View list of All certification exams offered;
<http://www.ipass4sure.com/all exams.asp>

View list of All Study Guides (SG);
<http://www.ipass4sure.com/study-guides.asp>

View list of All Audio Exams (AE);
<http://www.ipass4sure.com/audio-exams.asp>

Download Any Certification Exam DEMO.
<http://www.ipass4sure.com/samples.asp>

To purchase Full version of exam click below;
<http://www.ipass4sure.com/all exams.asp>

3COM	CompTIA	Filemaker	IBM	LPI	OMG	Sun
ADOBE	ComputerAssociates	Fortinet	IISFA	McAfee	Oracle	Sybase
APC	CWNP	Foundry	Intel	McData	PMI	Symantec
Apple	DELL	Fujitsu	ISACA	Microsoft	Polycom	TeraData
BEA	ECCouncil	GuidanceSoftware	ISC2	Mile2	RedHat	TIA
BICSI	EMC	HDI	ISEB	NetworkAppliance	Sair	Tibco
CheckPoint	Enterasys	Hitachi	ISM	Network-General	SASInstitute	TruSecure
Cisco	ExamExpress	HP	Juniper	Nokia	SCP	Veritas
Citrix	Exin	Huawei	Legato	Nortel	See-Beyond	Vmware
CIW	ExtremeNetworks	Hyperion	Lotus	Novell	Google	

and many others.. See complete list [Here](#)

