

Examcollection

<http://www.ipass4sure.com/examcollection.htm>

156-915

CheckPoint

Accelerated CCSE NGX

<http://www.ipass4sure.com/exams.asp?examcode=156-915>

The 156-915 practice exam is written and formatted by Certified Senior IT Professionals working in today's prospering companies and data centers all over the world! The 156-915 Practice Test covers all the exam topics and objectives and will prepare you for success quickly and efficiently. The 156-915 exam is very challenging, but with our 156-915 questions and answers practice exam, you can feel confident in obtaining your success on the 156-915 exam on your FIRST TRY!

CheckPoint 156-915 Exam Features

- Detailed questions and answers for 156-915 exam
- Try a demo before buying any CheckPoint exam
- 156-915 questions and answers, updated regularly
- Verified 156-915 answers by Experts and bear almost 100% accuracy
- 156-915 tested and verified before publishing
- 156-915 examcollection vce questions with exhibits
- 156-915 same questions as real exam with multiple choice options

Acquiring CheckPoint certifications are becoming a huge task in the field of I.T. More over these exams like 156-915 exam are now continuously updating and accepting this challenge is itself a task. This 156-915 test is an important part of CheckPoint certifications. We have the resources to prepare you for this. The 156-915 exam is essential and core part of CheckPoint certifications and once you clear the exam you will be able to solve the real life problems yourself. Want to take advantage of the Real 156-915 Test and save time and money while developing your skills to pass your CheckPoint 156-915 Exam? Let us help you climb that ladder of success and pass your 156-915 now!

DEMO EXAM

For Full Version visit

<http://www.ipass4sure.com/allexams.asp>

Question: 1

When restoring NGX using the upgrade_import command, which of the following items are NOT restored?

- A. Security Policies
- B. Global properties
- C. Licenses
- D. User groups
- E. Route tables

Answer: E

Question: 2

Your organization has many VPN-1 Edge gateways at various branch offices, to allow VPN-1 SecureClient users to access company resources. For security reasons, your organization's Security Policy requires all Internet traffic initiated behind the VPN-1 Edge gateways first be inspected by your headquarters' VPN-1 Pro Security Gateway. How do you configure VPN routing in this star VPN Community?

- A. To the Internet and other targets only
- B. To the center and other satellites, through the center
- C. To the center only
- D. To the center, or through the center to other satellites, then to the Internet and other VPN targets

Answer: D

Question: 3

Your organization's security infrastructure separates Security Gateways geographically. You must request a central license for one remote Security Gateway. How would you request and apply the license? Request a central license:

- A. using the remote Gateway's IP address. Apply the license locally with the cplic put command.
- B. for the Gateways' IP address. Apply the license on the SmartCenter Server with the cprlic put command.
- C. using the remote Gateway's IP address. Attach the license to the remote Gateway via SmartUpdate.
- D. using your SmartCenter Server's IP address. Attach the license to the remote Gateway via SmartUpdate.
- E. using the SmartCenter Server's IP address. Apply the license locally on the remote Gateway with the cplic put command.

Answer: D

Question: 4

Your VPN Community includes three Security Gateways. Each Gateway has its own internal network defined as a VPN Domain. You must test the VPN-1 NGX route-based VPN feature, without stopping the VPN. What is the correct order of steps?

- A.
 1. Add a new interface on each Gateway.
 2. Remove the newly added network from the current VPN Domain for each Gateway.
 3. Create VTIs on each Gateway, to point to the other two peers
 4. Enable advanced routing on all three Gateways.
- B.
 1. Add a new interface on each Gateway.
 2. Remove the newly added network from the current VPN Domain in each gateway object.

3. Create VPN Tunnel Interfaces (VTI) on each gateway object, to point to the other two peers.
 4. Add static routes on three Gateways, to route the new network to each peer's VTI interface.
- C.
1. Add a new interface on each Gateway.
 2. Add the newly added network into the existing VPN Domain for each Gateway.
 3. Create VTIs on each gateway object, to point to the other two peers.
 4. Enable advanced routing on all three Gateways.
- D.
1. Add a new interface on each Gateway.
 2. Add the newly added network into the existing VPN Domain for each gateway object.
 3. Create VTIs on each gateway object, to point to the other two peers.
 4. Add static routes on three Gateways, to route the new networks to each peer's VTI interface.

Answer: B

Question: 5

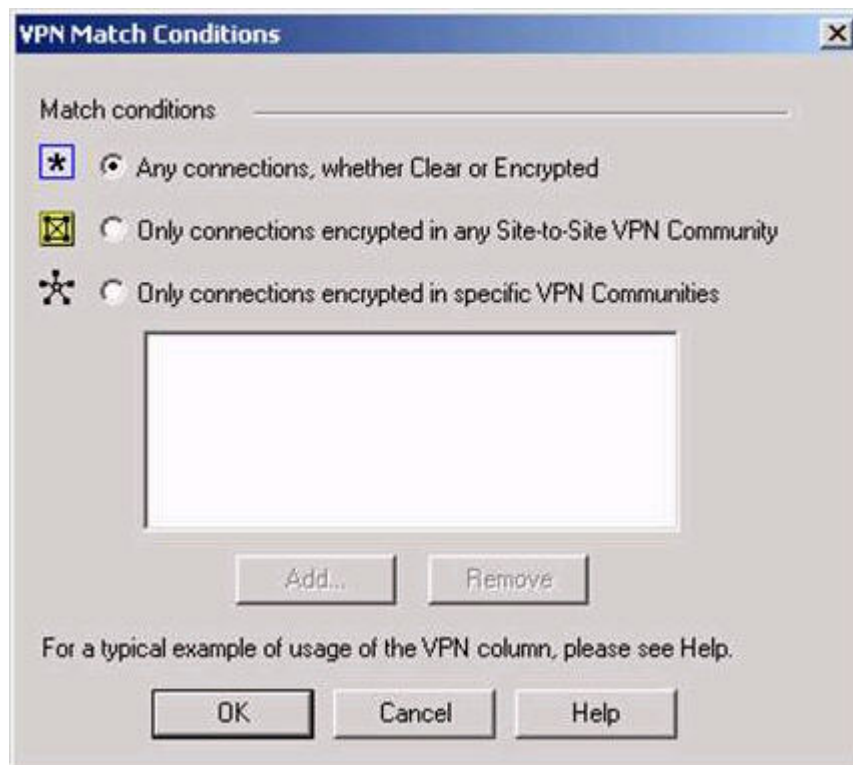
Eric wants to see all URLs' full destination paths in the SmartView Tracker logs, not just the fully qualified domain name of the Web servers. For example, the information filed of a log entry displays the URL `http://hp.msn.com/css/home/hpcl1012.css`. How can Eric best customize SmartView Tracker to see the logs he wants? Configure the URI resource, and select

- A. "transparent" as the connection method
- B. "tunneling" as the connection method
- C. "optimize URL logging"; use the URI resource in the rule, with action "accept"
- D. "Enforce URL capability"; use the URI resource in the rule, with action "accept"

Answer: C

Question: 6

Exhibit:



Steve tries to configure Directional VPN Rule Match in the Rule Base. But the Match column does not have the option to see the Directional Match. Steve sees the following screen. What is the problem?

- A. Steve must enable `directional_match(true)` in the `objectes_5_0.C` file on SmartCenter Server.
- B. Steve must enable Advanced Routing on each Security Gateway.
- C. Steve must enable VPN Directional Match on the VPN Advanced screen, in Global properties.
- D. Steve must enable a dynamic-routing protocol, such as OSPF, on the Gateways.
- E. Steve must enable VPN Directional Match on the gateway object's VPN tab.

Answer: C

Question: 7

In a Management High Availability (HA) configuration, you can configure synchronization to occur automatically, when:

1. The Security Policy is installed.
2. The Security Policy is saved.
3. The Security Administrator logs in to the secondary SmartCenter Server, and changes its status to active.
4. A scheduled event occurs.
5. The user database is installed.

Select the BEST response for the synchronization sequence. Choose one.

- A. 1, 2, 3
- B. 1, 2, 3, 4
- C. 1, 3, 4
- D. 1, 2, 5
- E. 1, 2, 4

Answer: E

Question: 8

After importing the NGX schema into an LDAP server, what should you enable? Schema checking

- A. Encryption
- B. UserAuthority
- C. ConnectControl
- D. Secure Internal Communications

Answer: A

Question: 9

What is the command to see the licenses of the Security Gateway FWDALLAS from your SmartCenter Server?

- A. `cprlic print FWDALLAS`
- B. `fw licprint FWDALLAS`
- C. `fw tab -t fwlic EWDALLAS`
- D. `cplic print FWDALLAS`
- E. `fw lic print FWDALLAS`

Answer: A

Question: 10

How can you unlock an administrator's account, which was been locked due to SmartCenter Access settings in Global Properties?

- A. Type `fwm lock_admin -ua` from the command line of the SmartCenter Server.
- B. Clear the "locked" box of the user's General Properties in SmartDashboard.
- C. Type `fwm unlock_admin -ua` from the command line of the SmartCenter Server
- D. Type `fwm unlock_admin -ua` from the command line of the Security Gateway.
- E. Delete the file `admin.lock` in the `$FWDIR/tmp/directory` of the SmartCenter Server.

Answer: A

Question: 11

You are reviewing SmartView Tracker entries, and see a Connection Rejection on a Check Point QoS rule. What causes the Connection Rejection?

- A. No QoS rule exists to match the rejected traffic.
- B. The number of guaranteed connections is exceeded. The rule's action properties are not set to accept additional connections.
- C. The Constant Bit Rate for a Low Latency Class has been exceeded by greater than 10%, and the Maximal Delay is set below requirements.
- D. Burst traffic matching the Default Rule is exhausting the Check Point QoS global packet buffers.
- E. The guarantee of one of the rule's sub-rules exceeds the guarantee in the rule itself.

Answer: B

Question: 12

You are preparing to configure your VoIP Domain Gatekeeper object. Which two other objects should you have created first?

- A. An object to represent the IP phone network, AND an object to represent the host on which the proxy is installed.
- B. An object to represent the PSTN phone network, AND an object to represent the IP phone network
- C. An object to represent the IP phone network, AND an object to represent the host on which the gatekeeper is installed.
- D. An object to represent the Q.931 service origination host. AND an object to represent the H.245 termination host.
- E. An object to represent the call manager. AND an object to represent the host on which the transmission router is installed.

Answer: C

Question: 13

In SmartView Tracker, which rule shows when a packet is dropped due to anti-spoofing?

- A. Rule 0
- B. Cleanup Rule
- C. Rule 1
- D. Rule 999
- E. Stealth Rule



Pass4sure Certification Exam Features;

- Pass4sure offers over **2500** Certification exams for professionals.
- More than **98,800** Satisfied Customers Worldwide.
- Average **99.8%** Success Rate.
- Over **120** Global Certification Vendors Covered.
- Services of **Professional & Certified Experts** available via support.
- Free **90 days** updates to match real exam scenarios.
- **Instant Download Access!** No Setup required.
- Price as low as **\$19**, which is 80% more **cost effective** than others.
- **Verified answers** researched by industry experts.
- Study Material **updated** on regular basis.
- Questions / Answers are downloadable in **PDF** format.
- Mobile Device Supported (**Android, iPhone, iPod, iPad**)
- **No authorization** code required to open exam.
- **Portable** anywhere.
- **Guaranteed Success.**
- **Fast**, helpful support **24x7**.



View list of All certification exams offered;
<http://www.ipass4sure.com/all exams.asp>

View list of All Study Guides (SG);
<http://www.ipass4sure.com/study-guides.asp>

View list of All Audio Exams (AE);
<http://www.ipass4sure.com/audio-exams.asp>

Download Any Certification Exam DEMO.
<http://www.ipass4sure.com/samples.asp>

To purchase Full version of exam click below;
<http://www.ipass4sure.com/all exams.asp>

3COM	CompTIA	Filemaker	IBM	LPI	OMG	Sun
ADOBE	ComputerAssociates	Fortinet	IISFA	McAfee	Oracle	Sybase
APC	CWNP	Foundry	Intel	McData	PMI	Symantec
Apple	DELL	Fujitsu	ISACA	Microsoft	Polycom	TeraData
BEA	ECCouncil	GuidanceSoftware	ISC2	Mile2	RedHat	TIA
BICSI	EMC	HDI	ISEB	NetworkAppliance	Sair	Tibco
CheckPoint	Enterasys	Hitachi	ISM	Network-General	SASInstitute	TruSecure
Cisco	ExamExpress	HP	Juniper	Nokia	SCP	Veritas
Citrix	Exin	Huawei	Legato	Nortel	See-Beyond	Vmware
CIW	ExtremeNetworks	Hyperion	Lotus	Novell	Google	

and many others.. See complete list [Here](#)

